

Title: Cattle for beef production on NI farms December 2021

Source: Livestock and Meat Commission/APHIS data

Date: 06 January 2022

Contact: bulletin@lmcni.com

Website: www.lmcni.com

Market Information Department



Total cattle for beef production

Age (months)	2019	2020	2021	2020/2021	2019/2021
0-6	112,371	118,371	147,299	+24.4%	+31.1%
6-12	243,490	255,428	257,018	+0.6%	+5.6%
12-18	127,023	136,636	138,445	+1.3%	+9.0%
18-24	194,899	202,376	207,189	+2.4%	+6.3%
24-30	72,589	69,150	70,963	+2.6%	-2.2%
30 +	302,598	300,524	300,355	-0.1%	-0.7%

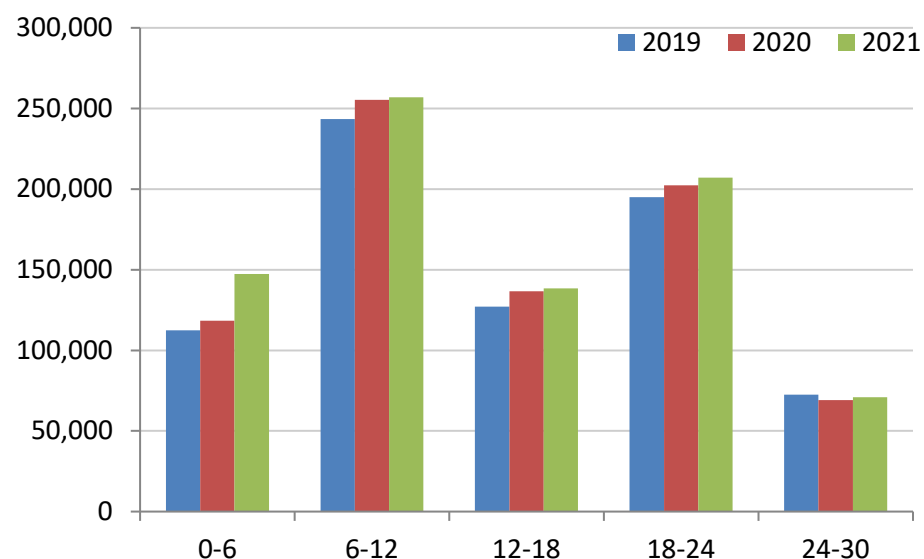
Beef sired male cattle for beef production

Age (months)	2019	2020	2021	2020/2021	2019/2021
0-6	47,506	49,196	64,307	+30.7%	+35.4%
6-12	115,180	119,766	119,594	-0.1%	+3.8%
12-18	53,978	58,546	58,707	+0.3%	+8.8%
18-24	84,923	88,522	88,191	-0.4%	+3.8%
24-30	25,046	22,813	22,799	-0.1%	-9.0%
30 +	19,672	17,606	17,308	-1.7%	-12.0%

Beef sired female cattle for beef production

Age (months)	2019	2020	2021	2020/2021	2019/2021
0-6	45,038	47,664	62,704	+31.6%	+39.2%
6-12	111,570	117,229	116,298	-0.8%	+4.2%
12-18	54,925	58,807	61,095	+3.9%	+11.2%
18-24	101,513	104,133	107,030	+2.8%	+5.4%
24-30	40,267	38,943	41,463	+6.5%	+3.0%
30 +	280,485	280,854	281,012	+0.1%	+0.2%

Total cattle for beef production



Dairy sired male cattle for beef production

Age (months)	2019	2020	2021	2020/2021	2019/2021
0-6	19,827	21,511	20,288	-5.7%	+2.3%
6-12	16,740	18,433	21,126	+14.6%	+26.2%
12-18	18,120	19,283	18,643	-3.3%	+2.9%
18-24	8,463	9,721	11,968	+23.1%	+41.4%
24-30	7,276	7,394	6,701	-9.4%	-7.9%
30+	2,441	2,064	2,035	-1.4%	-16.6%

LMC does not guarantee the accuracy or completeness of any third party information provided in or included with this publication.

LMC hereby disclaims any responsibility for error, omission or inaccuracy in the information, misinterpretation or any other loss, disappointment, negligence or damage caused by reliance on third party information.