



**LMC**  
**Mystery Shops: March 2020**

---



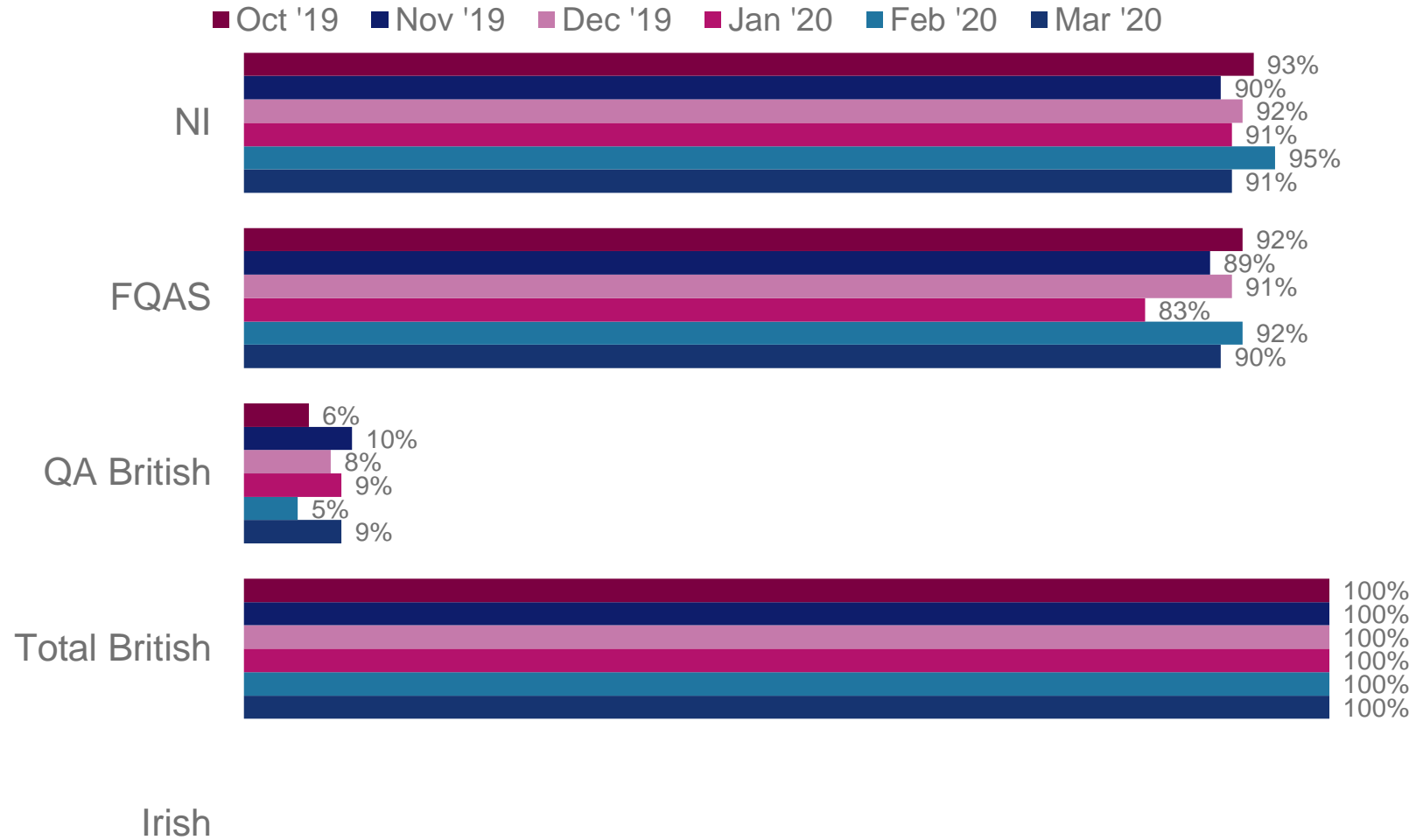
# Methodology and Sample

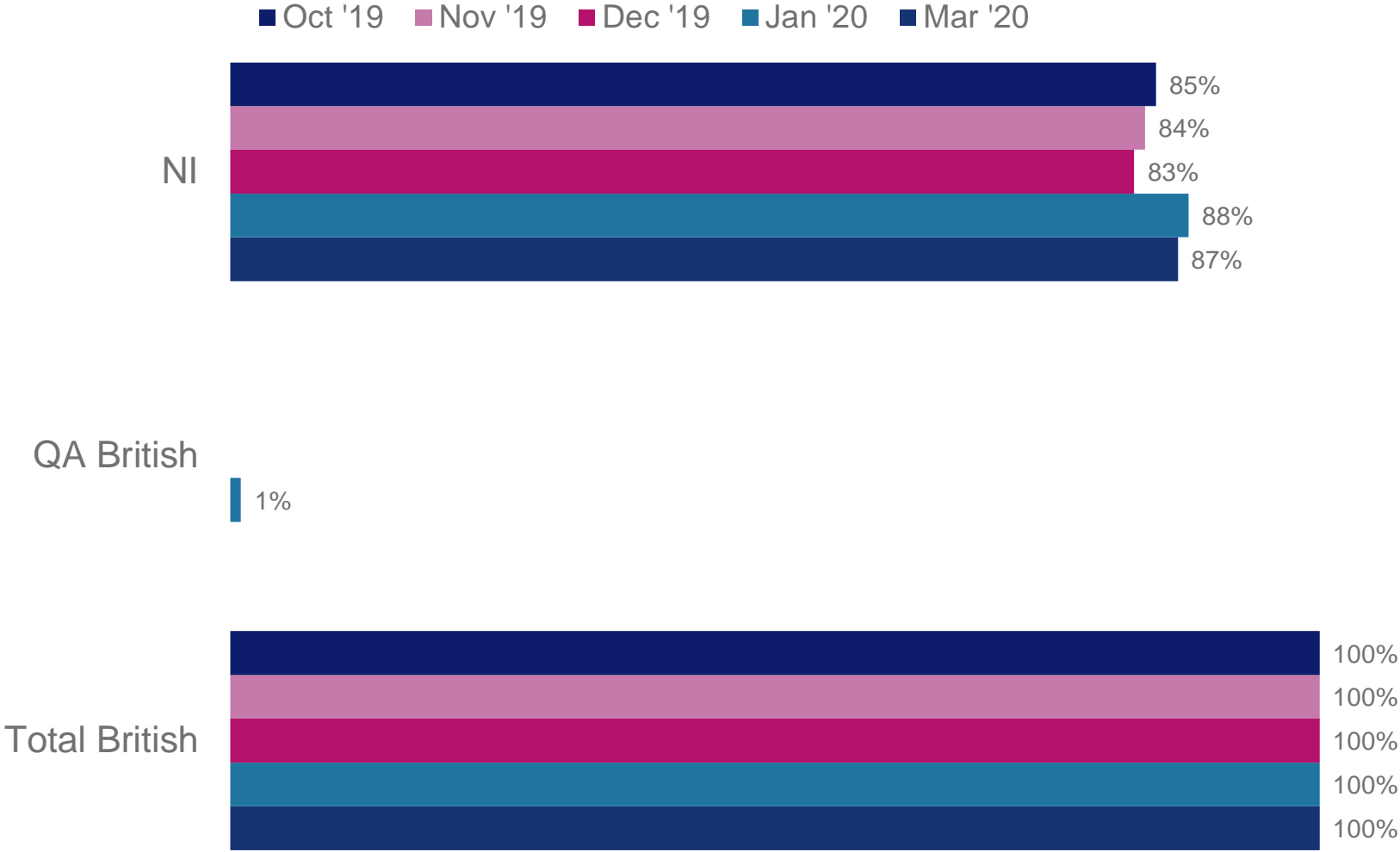
- The primary objective of this on-going study is to understand the origin of relevant beef and lamb products stocked across a variety of stores in Northern Ireland.
- On a monthly basis, a Cognisense Ltd. mystery shopper visits 10 separate stores in order to record the following information:
  - Presence of the Northern Ireland Farm Quality Assured label or other (specified by LMC) quality assurance logos
  - Origin of product (NI, Britain, Ireland, EU, Australia or New Zealand)
- Each store is visited twice per month, allowing for a weekday and weekend mystery shop.
- The stores visited within the sample are Tesco, Sainsbury's, ASDA, Lidl, SuperValu, Marks & Spencer, Eurospar, Co-Op and Iceland – the location of the stores visited changes each month.
- All fieldwork is conducted in accordance with the Market Research Society Code of Conduct.
- This report details results from October 2019 – March 2020

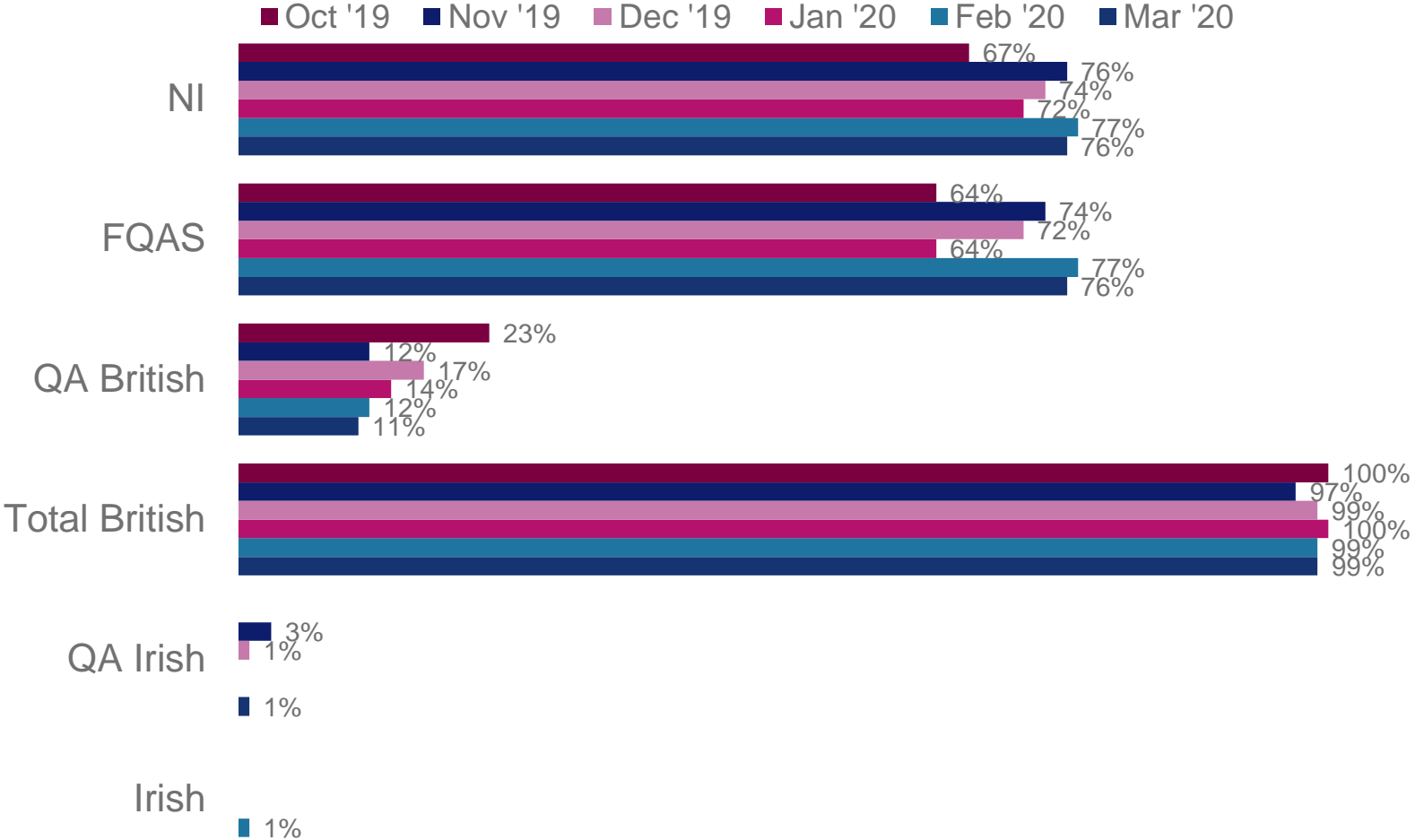
A large graphic of a stylized eye is positioned on the right side of the slide. The eye is white with a dark blue iris and a white pupil. It is set against a background of two overlapping circles: a pink one at the top and a blue one at the bottom. The text 'LMC Mystery Shops: Beef' is centered within the blue circle, below the eye.

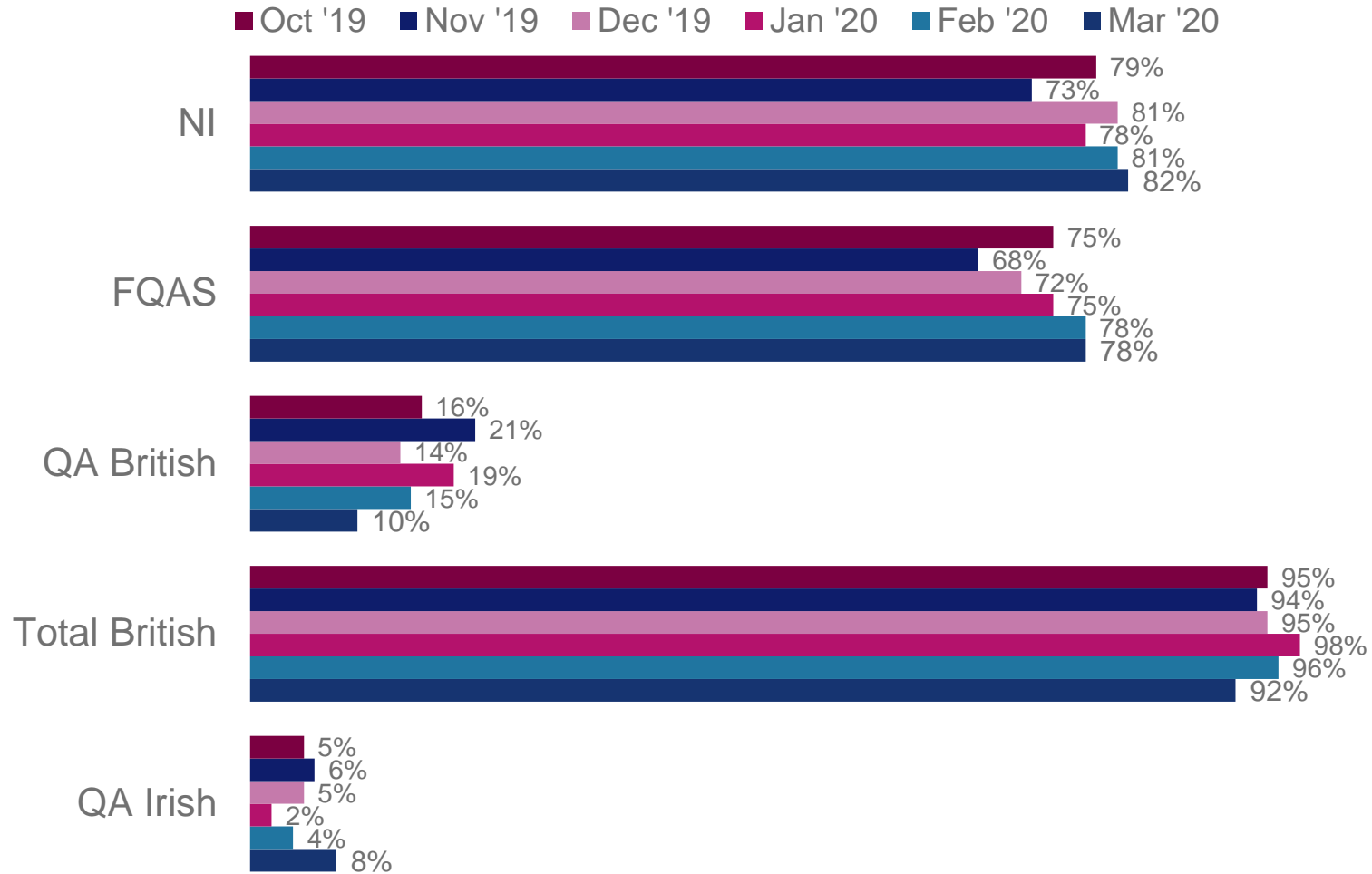
**LMC**  
**Mystery Shops: Beef**

---











■ Oct '19 ■ Nov '19 ■ Dec '19 ■ Jan '20 ■ Feb '20 ■ Mar '20

NI

Total British





# Other Stores



Month	Findings
October 2019	Did not feature in the mystery shopping programme for this month.
November 2019	Did not feature in the mystery shopping programme for this month.
December 2019	All relevant products were of British origin and displayed quality labelling.
January 2020	Did not feature in the mystery shopping programme for this month.
February 2020	Did not feature in the mystery shopping programme for this month.
March 2020	All relevant products were of British origin and displayed quality labelling.



Month	Findings
October 2019	All of the relevant beef products were from Northern Ireland, with 7% displaying FQAS labelling.
November 2019	All of the relevant beef products were of British origin, with 73% coming from Northern Ireland.
December 2019	Did not feature in the mystery shopping programme for this month.
January 2020	All of the relevant beef products were from Northern Ireland, but none displayed NIFQAS labelling.
February 2020	Half of the relevant beef products were of British origin, with none displaying NIFQAS labelling; the other half of the relevant products were from Ireland and displayed a quality logo.
March 2020	Did not feature in the mystery shopping programme for this month.



## EUROSPAR

Month	Findings
October 2019	All of the relevant beef products were of British origin, with none displaying quality assurance labelling.
November 2019	All of the relevant beef products were of British origin, with 43% displaying NIFQAS labelling.
December 2019	All of the products were of British origin, but none displayed quality assurance logos.
January 2020	All of the relevant beef products were of British origin, with 12% displaying NIFQAS labelling.
February 2020	All of the relevant beef products were of British origin, with 47% displaying NIFQAS labelling.
March 2020	All of the relevant beef products were of British origin, with none displaying quality assurance labelling.

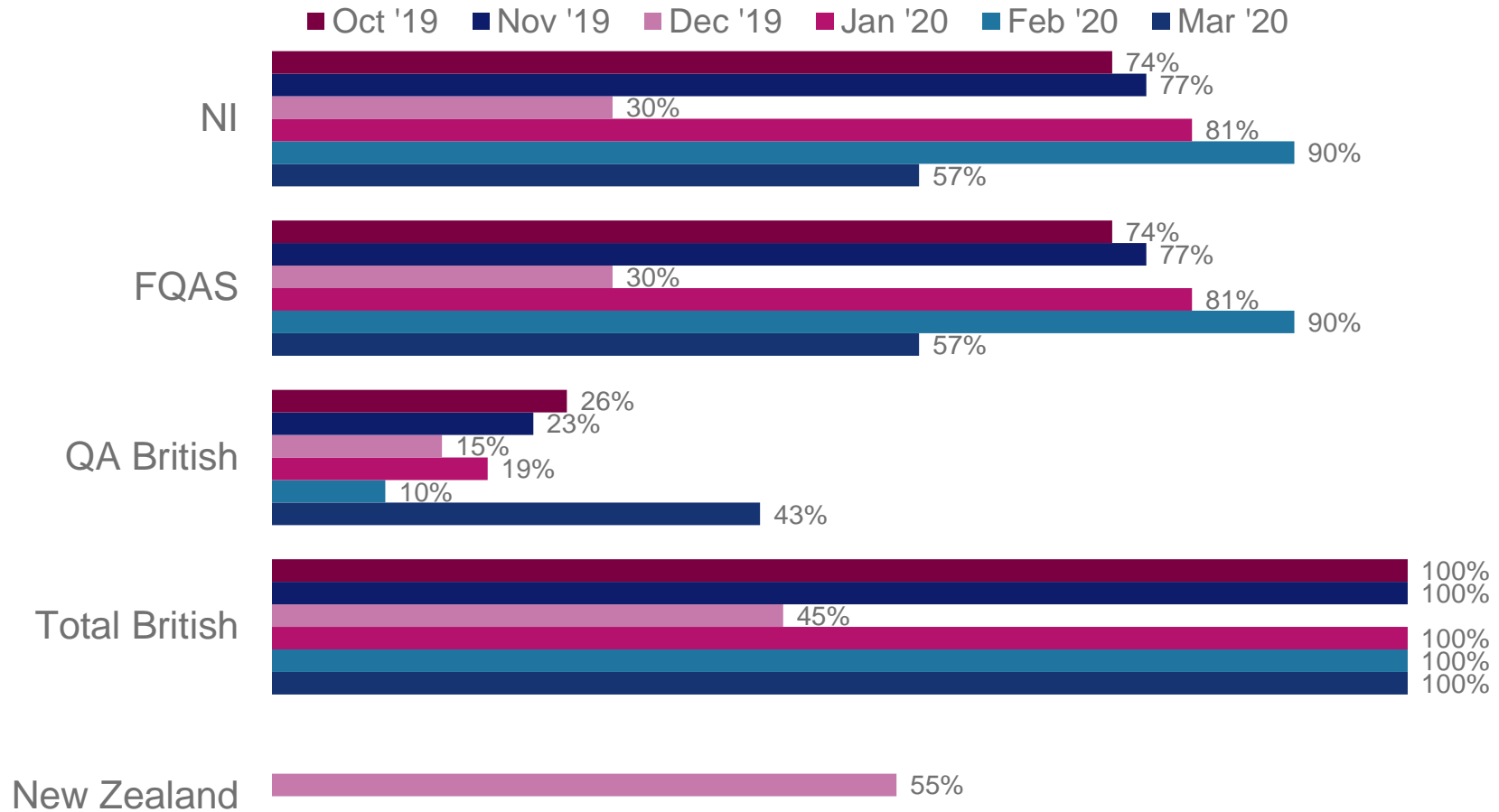
## Iceland

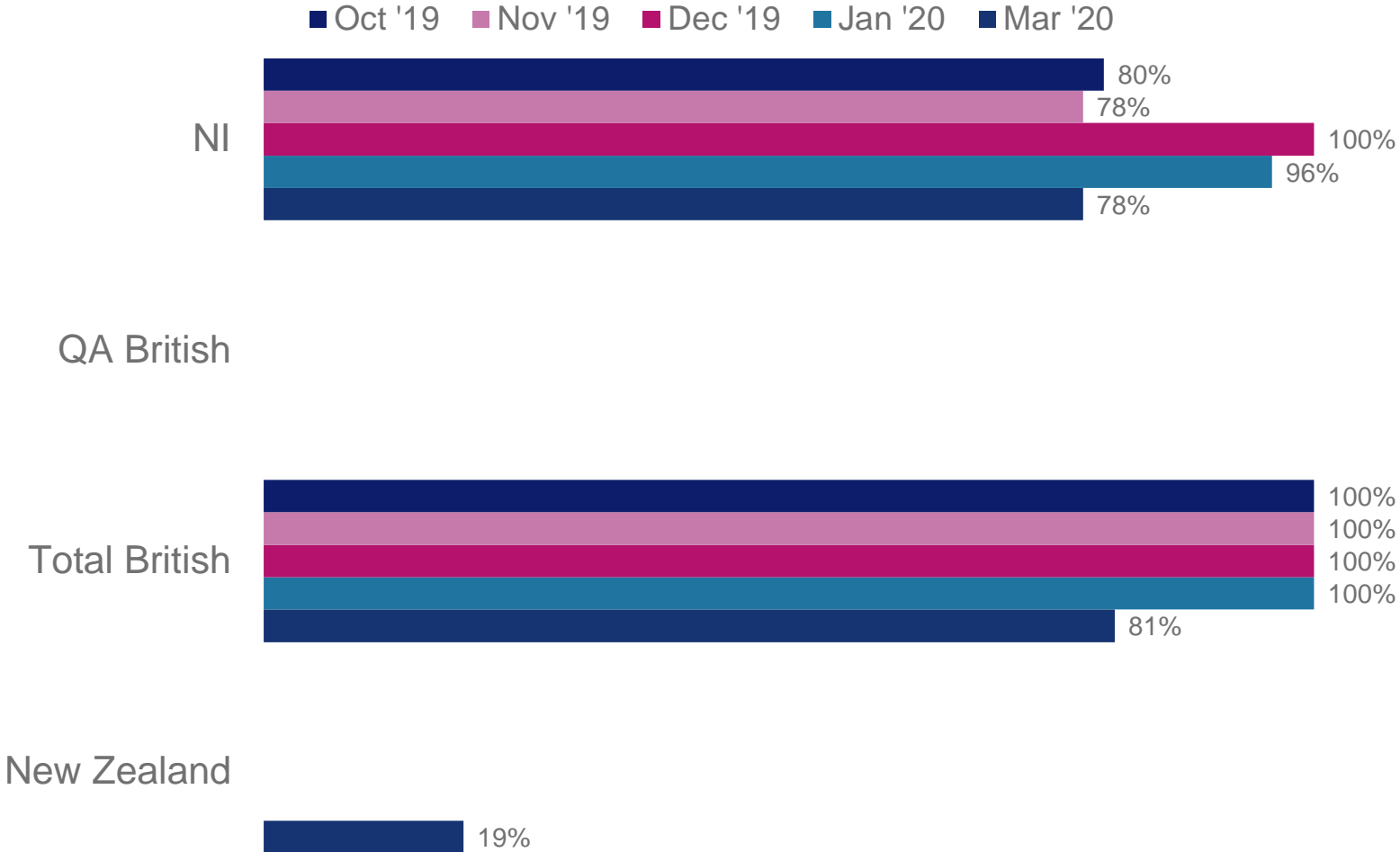
Month	Findings
October 2019	All of the relevant beef products were of British origin, with none displaying quality assurance labelling.
November 2019	All of the relevant beef products were of British origin, with none displaying quality assurance labelling.
December 2019	All of the relevant beef products were of British origin, with none displaying quality assurance labelling.
January 2020	All of the relevant beef products were of British origin, with none displaying quality assurance labelling.
February 2020	All of the relevant beef products were of British origin, with none displaying quality assurance labelling.
March 2020	All of the relevant beef products were of British origin, with none displaying quality assurance labelling.

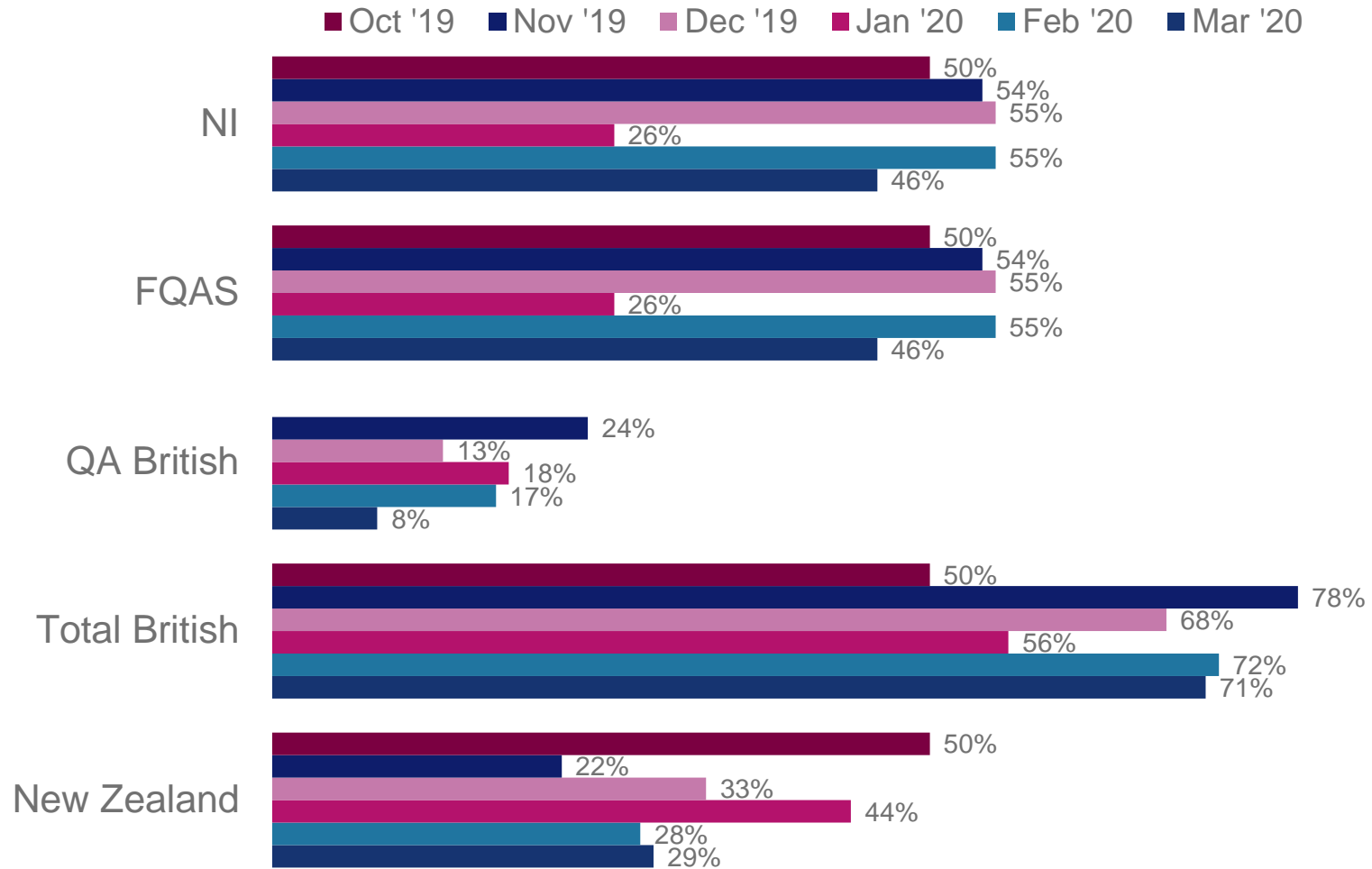
A large graphic of a stylized eye is positioned on the right side of the slide. The eye is white with a dark blue iris and a white pupil. It is set against a background of two overlapping circles: a pink one at the top and a blue one at the bottom. The text "LMC Mystery Shops: Lamb" is centered within the blue circle, below the eye.

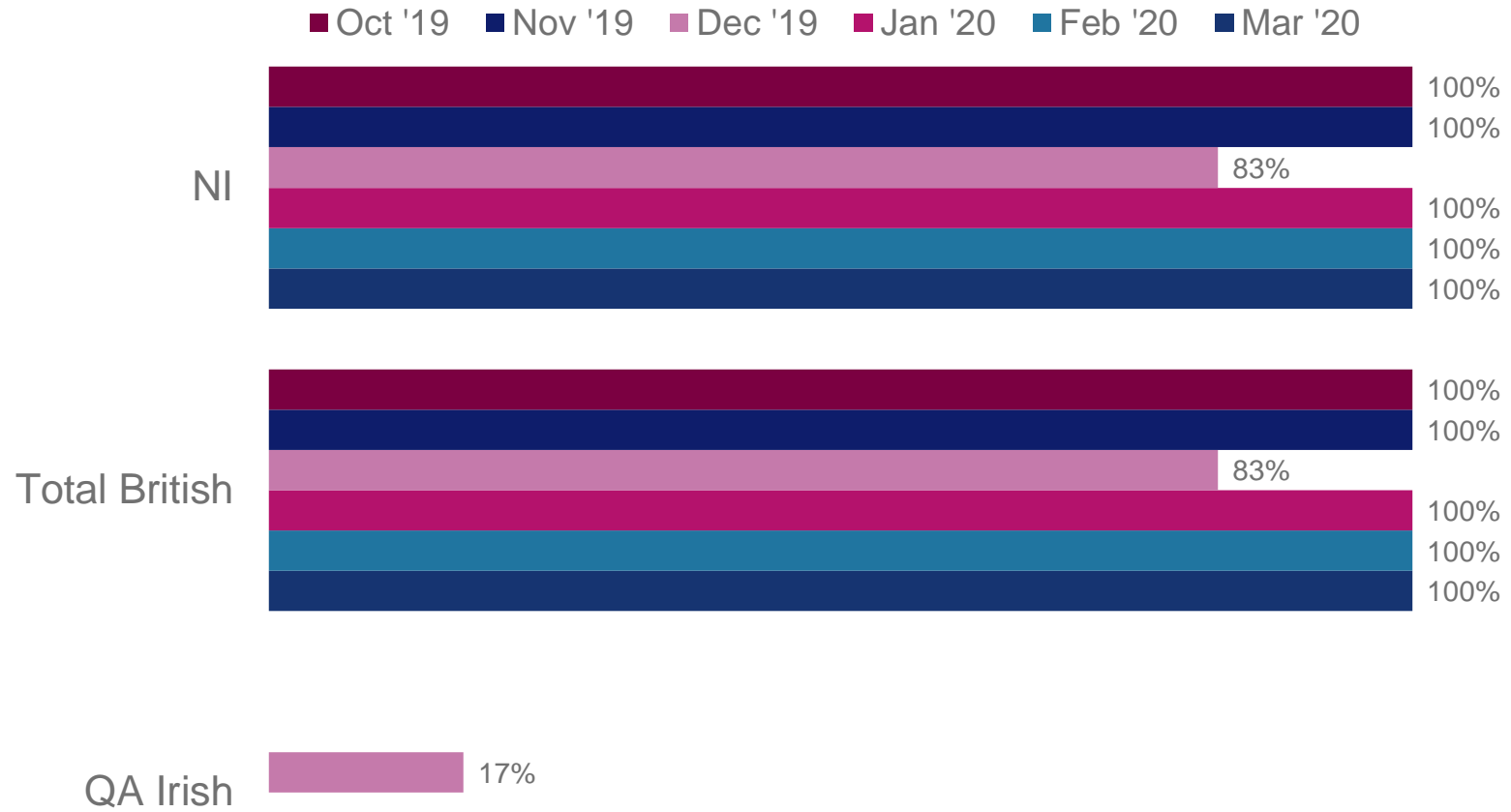
**LMC**  
**Mystery Shops: Lamb**

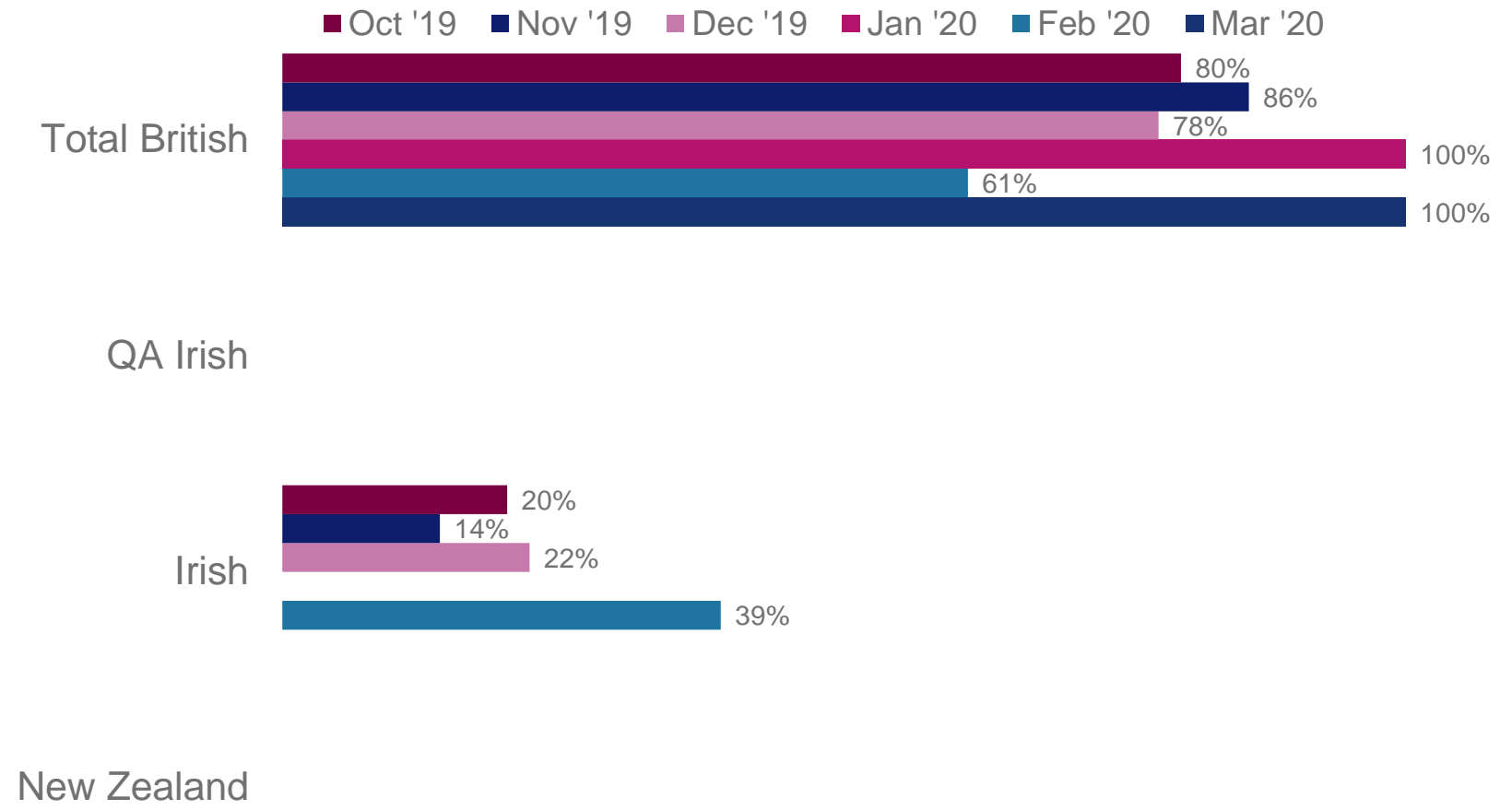
---















Month	Findings
October 2019	Did not feature in this month's mystery shopping programme.
November 2019	Did not feature in this month's mystery shopping programme.
December 2019	All of the relevant lamb products were of British origin and displayed quality assurance logos.
January 2020	Did not feature in this month's mystery shopping programme.
February 2020	Did not feature in this month's mystery shopping programme.
March 2020	All of the relevant lamb products were of British origin and displayed quality assurance logos.



Month	Findings
October 2019	No relevant lamb products in the stores visited.
November 2019	All of the relevant lamb products were of British origin, but none displayed quality assurance labelling.
December 2019	Did not feature in this month's mystery shopping programme.
January 2020	No relevant lamb products in the stores visited.
February 2020	All of the relevant lamb products were of British origin, but none displayed quality assurance labelling.
March 2020	Did not feature in this month's mystery shopping programme.



## EUROSPAR

Month	Findings
October 2019	No relevant lamb products in the stores visited.
November 2019	All of the lamb products were of British origin, but none displayed quality assurance labelling.
December 2019	No relevant lamb products in the stores visited.
January 2020	No relevant lamb products in the stores visited.
February 2020	All of the lamb products were of British origin, but none displayed quality assurance labelling.
March 2020	No relevant lamb products in the stores visited.

## Iceland

Month	Findings
October 2019	All of the relevant lamb products were from New Zealand.
November 2019	No relevant lamb products in the stores visited.
December 2019	All of the relevant lamb products were from New Zealand.
January 2020	No relevant lamb products in the stores visited.
February 2020	No relevant lamb products in the stores visited.
March 2020	No relevant lamb products in the stores visited.