

## DEADWEIGHT CATTLE TRADE

### NI FACTORY BASE QUOTES FOR CATTLE

(P/KG DW)	This Week 07/08/23	Next Week 14/08/23
<b>Prime</b>		
U-3	434 - 450p	434 - 446p
R-3	428 - 444p	428 - 440p
O+3	422 - 438p	422 - 434p
P+3	366 - 382p	366 - 378p
	Including bonus where applicable	
<b>Cows</b>		
O+3	324 - 335p	324 - 335p

Cow quotes vary depending on weight and grade.  
Pricing policies vary from plant to plant. Producers are advised to check pricing policies before presenting cattle for slaughter.

## FQAS MART CLINIC DATES AUGUST 2023

LMC Farm Liaison Officer, Terry White, attends a range of marts across the province to assist members of the NI FQAS with non-conformances, general scheme queries and any issues prior to or following an inspection.

For further information or to speak with Terry directly call the NI Farm Quality Assurance Helpline on (028) 9263 3024.

Terry will be available at the livestock marts listed in the table below during August 2023.

Mart	Day	Date
Omagh	Monday (Day)	21/08/2023
Ballymena	Friday (Day)	25/08/2023
Markethill	Tuesday (Day)	29/08/2023

### REPORTED NI CATTLE PRICES - P/KG

W/E 05/08/23	Steers	Heifers	Young Bulls
U3	464.7	462.5	454.5
R3	458.6	459.3	449.4
O+3	452.5	452.0	436.3

\*Prices exclude AA, HER and Organic cattle

### REPORTED COW PRICES NI - P/KG

W/E 05/08/23	Weight Bands			
	<220kg	220-250kg	250-280kg	>280kg
P1	226.2	243.3	254.6	264.8
P2	265.3	286.9	301.2	316.6
P3	276.6	307.2	313.2	321.6
O3	-	332.4	336.0	341.2
O4	253.6	347.2	334.6	346.1
R3	-	360.0	344.0	360.5

### Deadweight Cattle Trade

Base quotes from the major NI plants this week for in spec U-3 grade prime cattle ranged from 434-450p/kg with quotes of 434-446p/kg expected early next week. Quotes for O+3 grading cows this week ranged from 324-335p/kg and similar quotes are expected for cows early next week.

Imports of prime cattle from ROI for direct slaughter in NI last week totalled 578 head, a notable increase of 162 head from the previous week and accounted for approximately 9 per cent of the total NI prime cattle kill. The number of cows imported from ROI for direct slaughter in NI plants totalled 231 head, an increase of 51 head from the previous week. Meanwhile exports from NI for direct slaughter in ROI plants last week consisted of four prime cattle and 15 cows. No cattle moved between NI and GB for direct slaughter last week.

The deadweight trade for cattle in NI, GB and ROI reported declines last week, however across the regions the trade remains well ahead of last years levels. The average R3 steer price in NI last week was 460p/kg with an average price of 460.4p/kg paid for R3 grade heifers. During the same week last year the average R3 steer and heifer price in NI was 436.4p/kg and 435.8p/kg respectively. Last week in NI the average price paid for cows was back 12.3p/kg from the previous week to 306.2p/kg. Across the regions the average cow price in Southern England last week was reported at 304.8p/kg, a 17.3p/kg decrease from the previous week leaving it behind NI levels for the first time since January.

### LAST WEEK'S DEADWEIGHT CATTLE PRICES (UK / ROI)

W/E 05/08/23	Northern Ireland	Rep of Ireland	Scotland	Northern England	Midlands & Wales	Southern England	GB
Steers	U3	456.1	417.3	471.8	473.6	477.3	471.4
	R3	460.0	409.0	469.2	467.6	466.2	463.9
	R4	460.5	410.1	471.6	470.3	464.7	461.5
	O3	449.2	396.6	451.7	448.2	441.6	441.8
AVG	449.6	-	466.3	462.0	452.3	450.3	457.7
Heifers	U3	462.6	424.0	481.1	471.7	476.2	472.2
	R3	460.4	412.5	472.6	464.6	464.7	460.9
	R4	458.3	414.6	474.4	467.5	465.0	459.0
	O3	448.4	403.3	454.6	447.4	440.7	442.0
AVG	448.6	-	470.2	457.8	450.2	445.6	455.6
Young Bulls	U3	454.1	412.6	463.4	460.2	469.8	459.3
	R3	448.2	399.4	458.8	451.6	454.9	454.1
	O3	429.8	383.4	430.6	418.8	425.5	425.0
	AVG	438.8	-	457.0	443.6	447.3	449.9
Prime Cattle Price Reported	5,012	-	5,595	6,927	7,460	4,827	24,809
Cows	O3	340.7	336.1	353.9	340.1	353.8	350.4
	O4	344.5	336.3	359.8	345.1	356.5	342.5
	P2	305.6	307.6	319.1	309.1	319.5	314.3
	P3	317.9	324.9	331.2	328.6	332.4	333.3
AVG	306.2	-	349.9	320.9	323.9	304.8	321.3

Notes: (i) Prices are p/kg Sterling-ROI prices converted at 1 euro=86.07p Stg  
(ii) Shading indicates a lower price than the previous week.  
(iii) AVG is the average of all grades in the category, not just those listed

## LIVEWEIGHT CATTLE TRADE

### LATEST LIVEWEIGHT CATTLE MART PRICES NI

W/E 05/08/23	1st QUALITY			2nd QUALITY		
	From	To	Avg	From	To	Avg
<b>Finished Cattle (p/kg)</b>						
Steers	255	299	270	205	254	230
Friesians	200	224	208	184	198	190
Heifers	242	292	254	190	241	220
Beef Cows	200	245	216	145	199	155
Dairy Cows	130	166	147	75	129	100
<b>Store Cattle (p/kg)</b>						
Bullocks up to 400kg	270	335	290	200	269	235
Bullocks 400kg - 500kg	260	465	300	200	259	230
Bullocks over 500kg	240	293	255	190	239	215
Heifers up to 450kg	280	341	300	200	279	230
Heifers over 450kg	230	285	250	176	229	200
<b>Dropped Calves (£/head)</b>						
Continental Bulls	400	740	500	245	395	310
Continental Heifers	325	440	380	200	320	260
Friesian Bulls	120	180	150	40	115	75
Holstein Bulls	55	145	100	1	50	25

## DEADWEIGHT SHEEP TRADE

### NI SHEEP BASE QUOTES

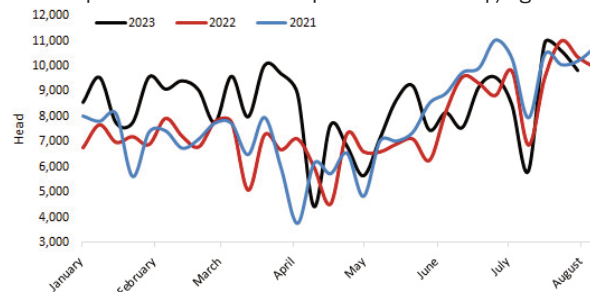
(P/Kg DW)	This Week 07/08/23	Next Week 14/08/23
R3 Lambs up to 21kg	510p	500 - 515p

### REPORTED SHEEP PRICES

(P/KG)	W/E 22/07/23	W/E 29/07/23	W/E 05/08/23
NI L/W Lambs	507.3	470.9	467.6
NI D/W Lambs	559.8	527.3	520.3
GB D/W Lambs	592.2	581.5	574.0
ROI D/W	593.6	561.0	546.5

### Sheep Trade

Good numbers of sheep continued to pass through the marts this week with a slightly softer liveweight trade reported from last week. Base quotes from the plants for R3 grading lambs ended this week ranging from 500-510p/kg up to 21kg. Next week base quotes are expected to range from 500-515p/kg. Lamb slaughterings in local plants totalled 9,839 head last week, back 781 head from the previous week. Meanwhile, exports for direct slaughter in ROI last week were back by 505 head to total 6,032 head. Last week the deadweight lamb price in NI decreased by 7p/kg from the previous week to 520.3p/kg, and in ROI last week the average deadweight lamb price was back 14.5p/kg from the previous week to the equivalent of 546.5p/kg.



## LIVEWEIGHT SHEEP TRADE

### LATEST SHEEP MARTS (P/KG LW)

From: 05/08/23		Lambs			
To: 10/08/23		No	From	To	Avg
Saturday	Omagh	919	461	511	-
	Swatragh	1200	452	483	-
Monday	Kilrea	700	456	507	-
	Markethill	1200	450	491	-
Tuesday	Saintfield	645	465	505	-
	Rathfriland	631	449	536	462
Wednesday	Ballymena	1507	460	508	478
	Enniskillen	720	461	486	-
	Armoyle	550	457	499	-