

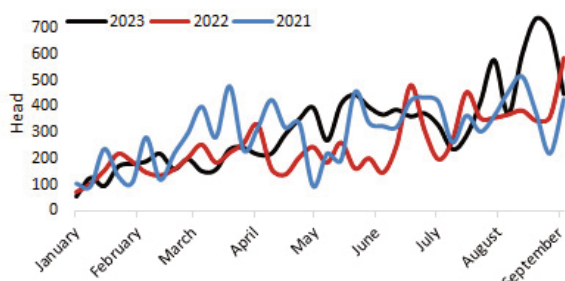
## DEADWEIGHT CATTLE TRADE

### NI FACTORY BASE QUOTES FOR CATTLE

| (P/KG DW)                        | This Week<br>25/09/23 | Next Week<br>02/10/23 |
|----------------------------------|-----------------------|-----------------------|
| <b>Prime</b>                     |                       |                       |
| U-3                              | 446 - 456p            | 446 - 454p            |
| R-3                              | 440 - 450p            | 440 - 448p            |
| O+3                              | 434 - 444p            | 434 - 442p            |
| P+3                              | 378 - 388p            | 378 - 386p            |
| Including bonus where applicable |                       |                       |
| <b>Cows</b>                      |                       |                       |
| O+3                              | 335 - 360p            | 335 - 360p            |

Cow quotes vary depending on weight and grade. Pricing policies vary from plant to plant. Producers are advised to check pricing policies before presenting cattle for slaughter.

### Prime Cattle Imports from ROI for direct slaughter to date 2021-2023 Source: DAERA



## MART FQAS SUPPORT DATES OCTOBER 2023

LMC's Farm Liaison officer Terry White will be available at the livestock marts listed in the table below during October 2023 to assist with any Farm Quality Assurance related queries.

| Mart       | Day           | Date       |
|------------|---------------|------------|
| Markethill | Tuesday (Day) | 03/10/2023 |
| Ballymena  | Friday (Day)  | 06/10/2023 |
| Omagh      | Monday (Day)  | 09/10/2023 |

Call the NI Farm Quality Assurance Helpline on (028) 9263 3024 to speak to Terry Monday to Friday.

### REPORTED NI CATTLE PRICES - P/KG

| W/E<br>23/09/23 | Steers | Heifers | Young<br>Bulls |
|-----------------|--------|---------|----------------|
| U3              | 469.4  | 467.0   | 457.1          |
| R3              | 463.8  | 463.0   | 453.3          |
| O+3             | 460.5  | 459.2   | 436.0          |

\*Prices exclude AA, HER and Organic cattle

### REPORTED COW PRICES NI - P/KG

| W/E<br>23/09/23 | Weight Bands |           |           |        |
|-----------------|--------------|-----------|-----------|--------|
|                 | <220kg       | 220-250kg | 250-280kg | >280kg |
| P1              | 236.9        | 253.5     | 267.2     | 277.7  |
| P2              | 263.8        | 293.0     | 313.6     | 321.3  |
| P3              | 256.0        | 314.8     | 316.6     | 332.7  |
| O3              | 327.5        | 331.1     | 350.9     | 351.5  |
| O4              | -            | -         | 369.6     | 353.2  |
| R3              | -            | -         | -         | 367.5  |

### Deadweight Cattle Trade

Base quotes from the major NI processors for in spec U-3 steers and heifers this week ranged from 446-456p/kg, with quotes for O+3 cows ranging from 335-360p/kg. Quotes for U-3 prime cattle received for Monday are ranging from 446-454p/kg with cow quotes expected to remain steady.

Steady levels of prime cattle continue to be presented for slaughter in local plants with the prime kill last week totalling 6,551 head. Meanwhile, cow throughput last week increased to 2,211 head. The deadweight cattle trade in NI last week reported increases across the majority of grades. The average R3 steer was up 3p/kg to 467.9p/kg while the deadweight cow trade in NI strengthened across all grades from the week previous with the average price paid in NI for an O3 cow up 4.3p/kg this week to 350.6p/kg. Marginal declines of 0.3p/kg were reported on average for heifers and young bulls last week.

GB prices continue to strengthen across all categories and across all regions. In GB, the average R3 steer was up 2.9p/kg to 486.3p/kg, the average R3 heifer price increased 4.2p/kg up to 484.8p/kg, and an increase of 4.3p/kg was reported for an average R3 young bull at 478.6p/kg. Cow prices also reported increases in GB with the average price paid for an O3 cow at 365p/kg, up 5.5p/kg from the previous week.

### LAST WEEK'S DEADWEIGHT CATTLE PRICES (UK / ROI)

| W/E<br>23/09/23 | Northern<br>Ireland            | Rep of<br>Ireland | Scotland | Northern<br>England | Midlands<br>& Wales | Southern<br>England | GB    |
|-----------------|--------------------------------|-------------------|----------|---------------------|---------------------|---------------------|-------|
| Steers          | U3                             | 470.4             | 417.8    | 499.4               | 491.5               | 487.5               | 491.9 |
|                 | R3                             | 467.9             | 407.3    | 497.4               | 484.6               | 481.3               | 484.8 |
|                 | R4                             | 465.2             | 407.4    | 499.1               | 486.5               | 480.5               | 483.3 |
|                 | O3                             | 456.9             | 391.7    | 480.1               | 470.1               | 462.2               | 467.1 |
|                 | AVG                            | 458.0             | -        | 495.1               | 478.3               | 469.6               | 472.5 |
| Heifers         | U3                             | 470.6             | 421.9    | 502.9               | 492.0               | 494.7               | 495.8 |
|                 | R3                             | 465.8             | 411.2    | 496.3               | 481.7               | 483.3               | 484.8 |
|                 | R4                             | 464.2             | 410.6    | 496.8               | 484.8               | 481.7               | 481.8 |
|                 | O3                             | 455.8             | 401.4    | 480.4               | 466.9               | 457.5               | 460.6 |
|                 | AVG                            | 456.7             | -        | 493.9               | 476.5               | 467.7               | 469.4 |
| Young<br>Bulls  | U3                             | 458.3             | 406.7    | 484.7               | 477.8               | 487.7               | 486.9 |
|                 | R3                             | 453.7             | 399.0    | 478.5               | 477.6               | 479.2               | 476.0 |
|                 | O3                             | 436.3             | 381.7    | 453.2               | 446.2               | 451.1               | 470.0 |
|                 | AVG                            | 443.9             | -        | 470.3               | 460.9               | 460.6               | 472.8 |
|                 | Prime Cattle<br>Price Reported | 4,992             | -        | 5,936               | 6,622               | 6,857               | 4,751 |
| Cows            | O3                             | 350.6             | 344.3    | 383.4               | 365.9               | 360.6               | 361.7 |
|                 | O4                             | 353.9             | 346.1    | 389.3               | 368.3               | 360.8               | 365.1 |
|                 | P2                             | 312.5             | 311.2    | 344.7               | 327.3               | 320.5               | 327.6 |
|                 | P3                             | 328.4             | 330.7    | 354.4               | 341.8               | 335.8               | 341.6 |
|                 | AVG                            | 308.3             | -        | 376.5               | 338.2               | 325.1               | 322.8 |

Notes: (i) Prices are p/kg Sterling-ROI prices converted at 1 euro=86.49p Stg  
(ii) Shading indicates a lower price than the previous week.  
(iii) AVG is the average of all grades in the category, not just those listed

## LIVEWEIGHT CATTLE TRADE

### LATEST LIVEWEIGHT CATTLE MART PRICES NI

| W/E<br>23/09/23                | 1st QUALITY |     |     | 2nd QUALITY |     |     |
|--------------------------------|-------------|-----|-----|-------------|-----|-----|
|                                | From        | To  | Avg | From        | To  | Avg |
| <b>Finished Cattle (p/kg)</b>  |             |     |     |             |     |     |
| Steers                         | 260         | 306 | 280 | 200         | 259 | 230 |
| Friesians                      | -           | -   | -   | -           | -   | -   |
| Heifers                        | 250         | 292 | 270 | 190         | 249 | 220 |
| Beef Cows                      | 208         | 268 | 230 | 165         | 207 | 185 |
| Dairy Cows                     | 144         | 190 | 160 | 70          | 143 | 105 |
| <b>Store Cattle (p/kg)</b>     |             |     |     |             |     |     |
| Bullocks up to 400kg           | 300         | 347 | 315 | 200         | 299 | 250 |
| Bullocks 400kg - 500kg         | 260         | 329 | 295 | 210         | 259 | 230 |
| Bullocks over 500kg            | 270         | 319 | 290 | 210         | 269 | 225 |
| Heifers up to 450kg            | 250         | 318 | 275 | 200         | 249 | 220 |
| Heifers over 450kg             | 240         | 294 | 265 | 185         | 239 | 215 |
| <b>Dropped Calves (£/head)</b> |             |     |     |             |     |     |
| Continental Bulls              | 400         | 675 | 470 | 245         | 385 | 300 |
| Continental Heifers            | 325         | 475 | 410 | 170         | 320 | 240 |
| Friesian Bulls                 | 105         | 235 | 180 | 10          | 95  | 40  |
| Holstein Bulls                 | 34          | 115 | 75  | 2           | 24  | 15  |

## DEADWEIGHT SHEEP TRADE

### NI SHEEP BASE QUOTES

| (P/Kg DW)           | This Week<br>25/09/23 | Next Week<br>02/10/23 |
|---------------------|-----------------------|-----------------------|
| R3 Lambs up to 21kg | 510 - 515p            | 510 - 515p            |

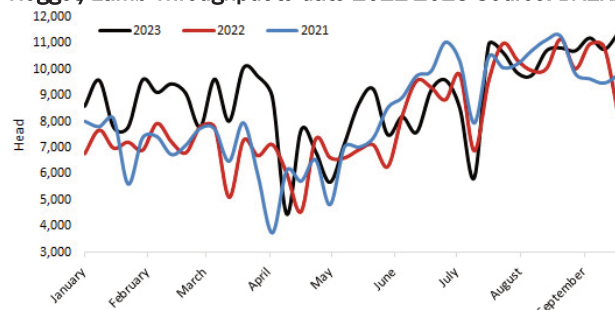
### REPORTED SHEEP PRICES

| (P/KG)       | W/E<br>09/09/23 | W/E<br>16/09/23 | W/E<br>23/09/23 |
|--------------|-----------------|-----------------|-----------------|
| NI L/W Lambs | 471.1           | 477.6           | 483.3           |
| NI D/W Lambs | 517.6           | 517.9           | 518.7           |
| GB D/W Lambs | 549.7           | 546.4           | 553.1           |
| ROI D/W      | 529.0           | 529.8           | 532.0           |

### Deadweight Sheep Trade

Base quotes for R3 lambs ended this week at 510-515p/kg, up to 21kg, with similar quotes expected early next week. An average deadweight price of 518.7p/kg was paid for lambs in NI last week, an increase of 0.8p/kg from the week previous. Prices for deadweight lambs in GB were up 6.7p/kg, paying an average price of 553.1p/kg. The average lamb price in ROI was also up by the equivalent of 2.2p/kg last week at 532p/kg. A total of 11,368 lambs were slaughtered locally in the major NI plants last week, the largest weekly slaughter figure in NI since October 2022.

### Hogget/Lamb Throughput to date 2021-2023 Source: DAERA



## LIVEWEIGHT SHEEP TRADE

### LATEST SHEEP MARTS (P/KG LW)

| From: 23/09/23 |             | Lambs |      |     |     |
|----------------|-------------|-------|------|-----|-----|
| To: 28/09/23   |             | No    | From | To  | Avg |
| Saturday       | Omagh       | 1020  | 506  | 595 | -   |
|                | Swatragh    | 1400  | 436  | 484 | -   |
| Monday         | Kilrea      | 1100  | 474  | 509 | -   |
|                | Markethill  | 1700  | 460  | 500 | -   |
| Tuesday        | Saintfield  | 1255  | 465  | 600 | -   |
|                | Rathfriland | 676   | 465  | 552 | 478 |
| Wednesday      | Ballymena   | 2745  | 455  | 507 | 470 |
|                | Enniskillen | 1261  | 455  | 495 | -   |
|                | Armoyle     | 600   | 455  | 490 | -   |

Information supplied by LMC / DAERA/ AHDB/ DAFM

LMC does not guarantee the accuracy or completeness of any third party information provided in this publication. LMC hereby disclaims any responsibility for error, omission or inaccuracy in the information, misinterpretation or any other loss, disappointment, negligence or damage caused by reliance on third party information. Not for further publication or distribution without prior permission from LMC

Contact LMC

T: 028 9263 3000  
E: bulletin@lmcni.com  
W: www.lmcni.com

Information

FQAS helpline: 028 9263 3024  
Answerphone: 028 9263 3011