

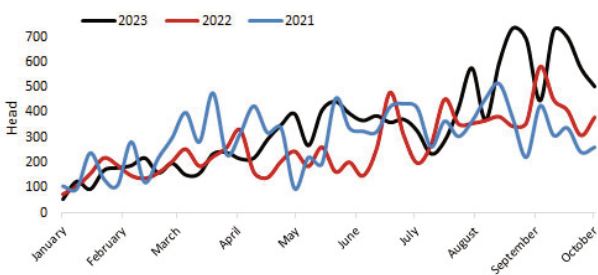
## DEADWEIGHT CATTLE TRADE

### NI FACTORY BASE QUOTES FOR CATTLE

(P/KG DW)	This Week 09/10/23	Next Week 16/10/23
<b>Prime</b>		
U-3	446 - 456p	442 - 452p
R-3	440 - 450p	436 - 446p
O+3	434 - 444p	430 - 440p
P+3	378 - 388p	374 - 384p
Including bonus where applicable		
<b>Cows</b>		
O+3	324 - 360p	314 - 350p

Cow quotes vary depending on weight and grade. Pricing policies vary from plant to plant. Producers are advised to check pricing policies before presenting cattle for slaughter.

**Prime Cattle Imports from ROI for direct slaughter to date 2021-2023 Source: DAERA**



### FINAL DATES FOR FREE AMR TRAINING SESSIONS ENDS 31ST OCTOBER 2023

Date & Time	Location
Monday 16th October, 7:30pm	Online Webinar
Friday 20th October, 7:30pm	Silverbirch Hotel, Omagh
Monday 23rd October, 7:30pm	Dunsilly Hotel, Antrim
Tuesday 24th October, 7:30pm	Online Webinar
Wednesday 25th October, 7:30pm	Millbrook Lodge, Ballynahinch
Monday 30th October, 7:30pm	Seagoe Hotel, Portadown

### REPORTED NI CATTLE PRICES - P/KG

W/E 07/10/23	Steers	Heifers	Young Bulls
U3	469.8	470.6	458.4
R3	465.8	467.2	456.0
O+3	457.0	459.4	437.6

### REPORTED COW PRICES NI - P/KG

W/E 07/10/23	Weight Bands			
	<220kg	220-250kg	250-280kg	>280kg
P1	233.2	249.1	263.1	276.0
P2	263.2	283.4	301.7	319.5
P3	274.5	310.7	322.7	331.8
O3	287.1	334.0	339.4	345.9
O4	283.7	-	332.3	346.6
R3	-	-	355.0	365.2

### Deadweight Cattle Trade

This week base quotes for in spec U-3 grade prime cattle ranged from 446-456p/kg with quotes for O+3 grading cows this week ranging from 324-360p/kg. Softer quotes are expected for all types of cattle early next week.

Last week deadweight cattle prices in NI came under some pressure with decreases reported across the majority of grades. Last week all grades of steers saw marginal price declines from the previous week back on average by 1.4p/kg to 457.8p/kg. Heifer prices remained relatively steady with the R3 heifer price steady from the previous week at 467.5p/kg, while the average heifer price increased by a marginal 0.2p/kg to 458.2p/kg. Young bulls saw the most significant price declines last week with the average price paid back 5.3p/kg to 440p/kg. Meanwhile the average cow price in NI last week was back 3.1p/kg to 305p/kg.

In GB last week the majority of deadweight prime cattle prices strengthened from the previous week. The average steer price was up by 1.4p/kg to 481.4p/kg with the R3 steer price up just under a penny to 489.4p/kg. Meanwhile, the average heifer price in GB last week was up by just less than a penny to 478.8p/kg while the R3 heifer price recorded a marginal 0.1p/kg increase to 487.2p/kg. This puts the GB R3 heifer price 19.7p/kg above the equivalent price in NI or an additional £63.04 on a 320kg carcass.

The R3 steer price in ROI last week was the equivalent of 402.2p/kg, back by 4.4p/kg while the R3 heifer price declined by 4.3p/kg to the equivalent of 406.4p/kg.

### LAST WEEK'S DEADWEIGHT CATTLE PRICES (UK / ROI)

W/E 07/10/23	Northern Ireland	Rep of Ireland	Scotland	Northern England	Midlands & Wales	Southern England	GB
Steers	U3	470.6	411.4	500.9	493.3	493.7	496.0
	R3	468.0	402.2	499.3	489.4	484.5	489.4
	R4	466.0	400.8	498.9	490.7	479.3	492.9
	O3	456.3	385.3	487.1	474.8	467.1	472.0
	AVG	457.8	-	495.8	482.4	473.0	481.4
Heifers	U3	471.4	415.8	504.3	493.8	496.5	497.8
	R3	467.5	406.4	497.0	487.6	483.8	487.2
	R4	465.3	407.1	497.9	489.2	483.2	491.3
	O3	457.7	396.3	480.6	470.1	460.0	466.0
Young Bulls	U3	458.3	406.0	487.7	482.7	495.1	487.7
	R3	452.4	395.0	478.9	470.8	480.0	476.8
	O3	431.4	382.5	457.4	444.0	447.5	450.1
	AVG	440.0	-	475.7	466.3	465.1	462.9
Prime Cattle Price Reported	5,901	-	5,880	6,810	6,884	5,151	24,725
Cows	O3	344.8	339.6	378.9	360.1	357.9	361.1
	O4	345.3	340.7	383.3	361.6	355.7	361.4
	P2	305.9	299.1	340.1	322.1	314.7	319.3
	P3	329.0	323.8	350.4	337.3	327.1	333.2
	AVG	305.0	-	372.7	336.5	320.3	328.7

Notes: (i) Prices are p/kg Sterling-ROI prices converted at 1 euro=86.62p Stg  
(ii) Shading indicates a lower price than the previous week.  
(iii) AVG is the average of all grades in the category, not just those listed

## LIVEWEIGHT CATTLE TRADE

### LATEST LIVEWEIGHT CATTLE MART PRICES NI

W/E 07/10/23	1st QUALITY			2nd QUALITY		
	From	To	Avg	From	To	Avg
<b>Finished Cattle (p/kg)</b>						
Steers	260	297	282	200	259	230
Friesians	200	228	207	164	199	185
Heifers	252	294	269	200	251	222
Beef Cows	206	249	227	160	205	182
Dairy Cows	140	168	150	36	139	90
<b>Store Cattle (p/kg)</b>						
Bullocks up to 400kg	280	322	300	200	279	240
Bullocks 400kg - 500kg	250	327	285	200	249	230
Bullocks over 500kg	255	326	290	190	254	218
Heifers up to 450kg	255	324	275	205	254	220
Heifers over 450kg	225	285	255	170	224	200
<b>Dropped Calves (£/head)</b>						
Continental Bulls	350	475	410	225	345	290
Continental Heifers	300	420	360	150	295	220
Friesian Bulls	155	230	180	25	140	66
Holstein Bulls	65	175	95	16	55	30

## DEADWEIGHT SHEEP TRADE

### NI SHEEP BASE QUOTES

(P/Kg DW)	This Week 09/10/23	Next Week 16/10/23
R3 Lambs up to 21kg	510 - 515p	515p

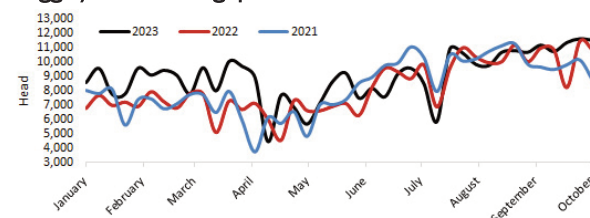
### REPORTED SHEEP PRICES

(P/KG)	W/E 23/09/23	W/E 30/09/23	W/E 07/10/23
NI L/W Lambs	483.3	474.1	471.2
NI D/W Lambs	518.7	520.1	518.3
GB D/W Lambs	553.1	549.7	549.6
ROI D/W	532.0	534.6	534.4

### Deadweight Sheep Trade

Base quotes for R3 grading lambs this week ranged from 510-515p/kg up to 21kg, with a base quote of 515p/kg expected from all plants early next week. The average deadweight lamb price in NI last week decreased by 1.8p/kg from the previous week to 518.3p/kg, with a slightly softer liveweight trade also reported across the marts this week. Last week 11,526 lambs were processed locally, bringing lamb throughput during the last six week period to 67,132 head, an increase of 4,504 head from the previous six week period. A further 6,767 lambs were exported to ROI for direct slaughter last week, back 693 head week on week, bringing the six week total to 36,807 head.

**Hogget/Lamb Throughput to date 2021-2023 Source: DAERA**



## LIVEWEIGHT SHEEP TRADE

### LATEST SHEEP MARTS (P/KG LW)

From: 07/10/23		Lambs			
To: 12/10/23		No	From	To	Avg
Saturday	Omagh	1072	471	544	-
	Swatragh	1200	445	500	-
Monday	Markethill	1470	450	479	-
Tuesday	Saintfield	780	458	505	-
	Rathfriland	732	458	527	469
Wednesday	Ballymena	2427	458	525	470
	Enniskillen	1158	458	500	-