

DEADWEIGHT CATTLE TRADE

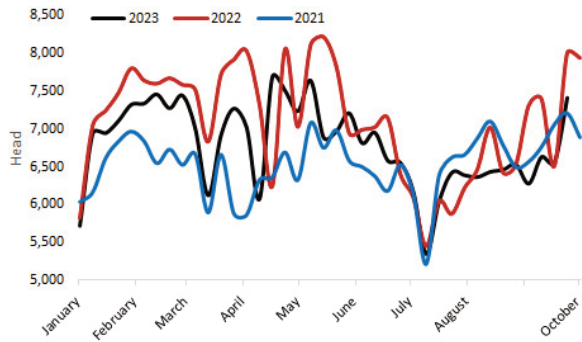
NI FACTORY BASE QUOTES FOR CATTLE

(P/KG DW)	This Week 02/10/23	Next Week 09/10/23
Prime		
U-3	446 - 454p	446 - 456p
R-3	440 - 448p	440 - 450p
O+3	434 - 442p	434 - 444p
P+3	378 - 386p	378 - 388p
Including bonus where applicable		
Cows		
O+3	335 - 360p	324 - 360p

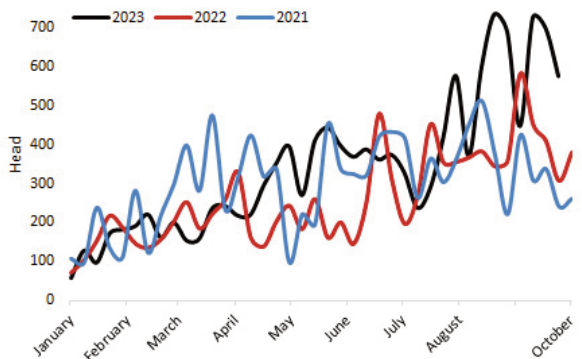
Cow quotes vary depending on weight and grade. Pricing policies vary from plant to plant. Producers are advised to check pricing policies before presenting cattle for slaughter.

Prime Cattle Throughput to date 2021-2023.

Source: DAERA.



Prime Cattle Imports from ROI for direct slaughter to date 2021-2023. Source: DAERA.



REPORTED NI CATTLE PRICES - P/KG

W/E 30/09/23	Steers	Heifers	Young Bulls
U3	471.3	472.2	465.3
R3	465.9	466.8	458.8
O+3	456.9	462.1	442.1

REPORTED COW PRICES NI - P/KG

W/E 30/09/23	Weight Bands			
	<220kg	220-250kg	250-280kg	>280kg
P1	239.9	254.2	267.0	282.5
P2	265.9	283.7	308.6	322.7
P3	268.6	303.9	326.1	330.8
O3	-	323.1	337.6	350.1
O4	303.9	-	341.1	350.9
R3	-	-	-	366.8

Deadweight Cattle Trade

Next week quotes of 446-456p/kg are expected for prime cattle and quotes of 324-360p/kg are expected for O+3 cows with just one plant quoting below 324p/kg.

Last week the local cattle kill increased to a 2023 peak of 7,414, the highest level of prime cattle kill since the middle of May 2023. Cow throughput levels also achieved a calendar year high with 2,496 passing through the NI plants last week, the largest weekly kill of cows since December 2022. Prime cattle imports from ROI for direct slaughter last week came to a total of 577 with an addition of 232 cows, both prime and cow imports for direct slaughter from ROI have slightly declined from the previous week. In NI, deadweight prime cattle trade strengthened with increases reported across all prime cattle categories from the week previous. The average R3 steer prices are up 0.3p/kg to 468.2p/kg, the average R3 heifer price was up 1.7p/kg to 467.5p/kg and lastly an increase of 2.8p/kg brought the average R3 young bull price up to 456.5p/kg. In contrast to a declining deadweight cow trade in NI with the average O3 graded cow back 1.7p/kg to 348.9p/kg.

GB has reported declines over all grades of cows with the O3 graded cow average back 0.7p/kg to 364.3p/kg. Deadweight cattle trade in ROI reported declines in sterling prices across most of the cattle categories. The average prices for steers and heifers dropped 0.7p/kg and 0.5p/kg in ROI.

LAST WEEK'S DEADWEIGHT CATTLE PRICES (UK / ROI)

W/E 30/09/23	Northern Ireland	Rep of Ireland	Scotland	Northern England	Midlands & Wales	Southern England	GB
Steers	U3	470.9	415.8	498.6	491.3	489.1	493.8
	R3	468.2	406.6	498.9	489.3	482.9	488.5
	R4	466.9	407.3	497.8	490.8	480.3	488.5
	O3	457.2	391.2	483.0	473.4	464.2	466.0
	AVG	459.2	-	494.7	481.8	470.3	471.7
Heifers	U3	472.4	419.8	505.4	494.8	496.7	498.8
	R3	467.5	410.7	493.3	487.8	484.9	487.1
	R4	464.8	409.9	498.2	488.9	484.7	486.4
	O3	457.6	400.9	475.0	465.1	460.2	459.2
	AVG	458.0	-	495.0	478.0	469.0	466.9
Young Bulls	U3	462.1	408.8	490.1	474.4	486.4	482.3
	R3	456.5	398.8	477.2	477.3	478.8	477.6
	O3	438.7	382.6	439.6	449.9	445.2	445.3
	AVG	445.3	-	473.2	464.6	464.2	448.0
	Prime Cattle Price Reported	5,789	-	6,196	6,787	7,175	4,736
Cows	O3	348.9	343.7	384.1	364.2	360.9	364.3
	O4	350.2	343.6	389.0	367.7	360.4	361.8
	P2	312.6	307.1	336.8	328.7	319.2	325.4
	P3	328.5	329.5	348.4	345.9	330.4	345.6
	AVG	308.1	-	378.5	341.2	323.7	322.0

Notes: (i) Prices are p/kg Sterling-ROI prices converted at 1 euro=86.72p Stg
(ii) Shading indicates a lower price than the previous week.
(iii) AVG is the average of all grades in the category, not just those listed

LIVEWEIGHT CATTLE TRADE

LATEST LIVEWEIGHT CATTLE MART PRICES NI

W/E 30/09/23	1st QUALITY			2nd QUALITY		
	From	To	Avg	From	To	Avg
Finished Cattle (p/kg)						
Steers	265	305	285	205	264	235
Friesians	-	-	-	-	-	-
Heifers	260	298	274	200	259	225
Beef Cows	215	272	230	170	214	188
Dairy Cows	140	180	150	65	139	100
Store Cattle (p/kg)						
Bullocks up to 400kg	300	358	320	210	299	255
Bullocks 400kg - 500kg	265	336	300	215	264	240
Bullocks over 500kg	255	326	290	200	254	220
Heifers up to 450kg	260	329	280	210	259	225
Heifers over 450kg	230	284	260	175	229	205
Dropped Calves (£/head)						
Continental Bulls	375	550	450	230	370	300
Continental Heifers	300	430	365	150	295	225
Friesian Bulls	145	230	170	40	140	75
Holstein Bulls	70	125	95	10	65	35

DEADWEIGHT SHEEP TRADE

NI SHEEP BASE QUOTES

(P/Kg DW)	This Week 02/10/23	Next Week 09/10/23
R3 Lambs up to 21kg	510 - 515p	510 - 515p

REPORTED SHEEP PRICES

(P/KG)	W/E 16/09/23	W/E 23/09/23	W/E 30/09/23
NI L/W Lambs	477.6	483.3	474.1
NI D/W Lambs	517.9	518.7	520.1
GB D/W Lambs	546.4	553.1	549.7
ROI D/W	529.8	532.0	534.6

Deadweight Sheep Trade

An average deadweight price of 520.1p/kg was paid for lambs in NI last week, an increase of 1.4p/kg from the previous week. Base quotes ended this week in the regions of 510-515p/kg for R3 lambs up to 21kg. Similar quotes are expected early next week with just one plant quoting 510p/kg for next week. The lamb kill in NI continues to reach calendar year highs with figures last week totalling 11,627. Meanwhile, a total of 6,789 lambs were exported to ROI for direct slaughter last week, bringing the total exports to ROI for direct slaughter to 73,193 for the third quarter of this year. Deadweight trade for sheep in NI continues to go from strength to strength with an increase of 1.4p/kg bringing the deadweight lamb price up to 520.1p/kg last week. An increase of 2.6p/kg in deadweight sheep trade was also reported in ROI, with lambs priced at 534.6p/kg last week. As for GB on the other hand, which reported a decline of 3.4p/kg in deadweight lamb prices to 549.7p/kg last week.

Liveweight Sheep Trade

Strong numbers passed through the marts last week, while the trade was slightly softer compared to the previous week. Strong numbers of fat ewes also continue to pass through the marts with a top reported price of £236 last week.

LIVEWEIGHT SHEEP TRADE

LATEST SHEEP MARTS (P/KG LW)

From: 30/09/23		Lambs			
To: 05/10/23		No	From	To	Avg
Saturday	Omagh	1190	489	536	-
	Swatragh	1700	425	470	-
Monday	Kilrea	1000	470	505	-
	Markethill	1340	450	483	-
Tuesday	Saintfield	900	460	500	-
	Rathfriland	1012	450	530	471
Wednesday	Ballymena	2332	450	502	469
	Enniskillen	1289	450	522	-
	Armoyle	490	455	480	-