

## DEADWEIGHT CATTLE TRADE

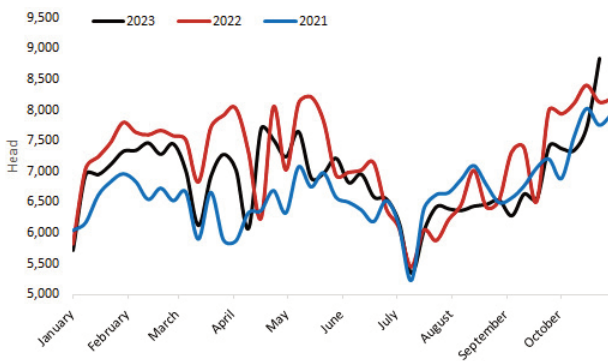
### NI FACTORY BASE QUOTES FOR CATTLE

(P/KG DW)	This Week 30/10/23	Next Week 06/11/23
<b>Prime</b>		
U-3	No quotes available due to strike disruptions.	438 - 448p
R-3		432 - 442p
O+3		426 - 436p
P+3		370 - 380p
<b>Cows</b>		
O+3		298 - 320p

Cow quotes vary depending on weight and grade. Pricing policies vary from plant to plant. Producers are advised to check pricing policies before presenting cattle for slaughter.

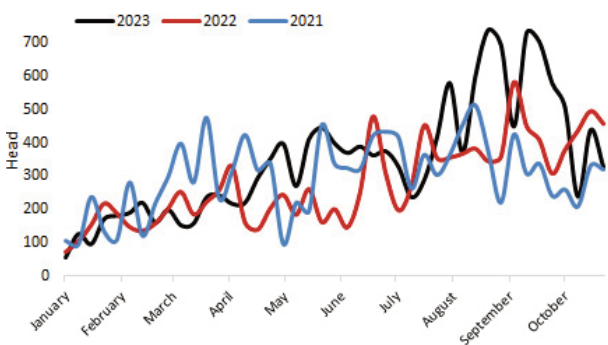
### Prime Cattle Throughput to date 2021-2023

Source: DAERA.



### Prime cattle imports to date 2021-2023

Source: DAERA.



### REPORTED NI CATTLE PRICES - P/KG

W/E 28/10/23	Steers	Heifers	Young Bulls
U3	464.6	468.3	456.0
R3	460.3	460.3	452.3
O+3	452.1	452.9	439.2

\*Prices exclude AA, HER and Organic cattle

### REPORTED COW PRICES NI - P/KG

W/E 28/10/23	Weight Bands			
	<220kg	220-250kg	250-280kg	>280kg
P1	211.1	224.0	236.1	252.9
P2	249.1	259.3	276.4	295.6
P3	255.5	282.4	293.6	301.3
O3	202.0	293.4	313.2	322.7
O4	-	-	313.1	327.6
R3	-	-	-	343.1

### Deadweight Cattle Trade

Last week civil service strikes affected veterinary and meat inspection services within Northern Ireland slaughter plants. Normal business within NI abattoirs is planned to resume on Monday 6th November. Base quotes for in-spec U-3 prime cattle early next week are expected to range from 438-448p/kg and quotes O+3 cows will be in the region of 298-320p/kg.

Last week a softer trade for cattle was reported in NI, with strong levels slaughtered as plants undertook production to account for the strike related disruption forecast. The highest weekly prime cattle kill seen in NI for over a decade was recorded last week when 8,835 head were slaughtered. The last time a similar weekly level of prime cattle were slaughtered was during January 2006 when prime throughput totalled 8,834 head. Last week 327 prime cattle were imported from ROI for direct slaughter locally, with 154 cows also imported for slaughter. Meanwhile, last week cow throughput remained at similar levels to the previous week with 2,784 cows slaughtered in local plants. Last week the average price paid for an R3 steer in NI was back 3.0p/kg to 462.5p/kg, R3 young bulls were back by 3.7p/kg to 447.6p/kg on average and O3 cows came back 10.2p/kg to 320.8p/kg. A smaller decline of 1.1p/kg brought the average price for an R3 heifer to 463.2p/kg.

### LAST WEEK'S DEADWEIGHT CATTLE PRICES (UK / ROI)

W/E 28/10/23	Northern Ireland	Rep of Ireland	Scotland	Northern England	Midlands & Wales	Southern England	GB
Steers	U3	465.2	411.4	504.3	492.2	488.6	494.6
	R3	462.5	401.1	501.2	488.6	481.7	488.4
	R4	459.9	400.1	498.8	490.9	480.7	485.6
	O3	453.0	385.6	485.9	473.3	462.0	467.6
	AVG	452.4	-	497.1	480.6	467.5	474.9
Heifers	U3	469.1	416.6	504.2	494.0	496.4	492.0
	R3	463.2	406.1	497.6	485.2	483.3	483.7
	R4	460.9	406.7	497.3	490.5	483.0	484.1
	O3	453.4	398.6	477.8	466.6	458.4	463.0
	AVG	454.5	-	493.9	477.9	464.6	462.4
Young Bulls	U3	451.3	404.0	491.1	483.5	486.9	490.9
	R3	447.6	396.3	486.0	473.0	478.7	479.3
	O3	432.4	382.3	461.9	439.8	443.4	454.2
	AVG	438.7	-	482.9	457.1	459.3	465.0
	Prime Cattle Price Reported	7,297	-	6,301	7,209	8,326	5,181
Cows	O3	320.8	329.0	357.2	334.0	328.6	332.9
	O4	326.9	330.7	365.8	339.4	330.8	332.7
	P2	283.4	278.7	306.2	302.0	290.4	302.1
	P3	299.0	311.5	328.7	316.5	307.2	313.8
	AVG	282.2	-	348.7	314.0	289.2	291.7

Notes: (i) Prices are p/kg Sterling-ROI prices converted at 1 euro=87.12p Stg  
(ii) Shading indicates a lower price than the previous week.  
(iii) AVG is the average of all grades in the category, not just those listed

## LIVEWEIGHT CATTLE TRADE

### LATEST LIVEWEIGHT CATTLE MART PRICES NI

	W/E 28/10/23	1st QUALITY			2nd QUALITY		
		From	To	Avg	From	To	Avg
<b>Finished Cattle (p/kg)</b>							
Steers		248	297	267	200	247	220
Friesians		-	-	-	168	170	169
Heifers		250	268	259	200	249	220
Beef Cows		170	216	188	135	169	150
Dairy Cows		112	178	133	40	110	75
<b>Store Cattle (p/kg)</b>							
Bullocks up to 400kg		275	333	295	210	274	235
Bullocks 400kg - 500kg		245	309	275	205	240	220
Bullocks over 500kg		245	307	265	172	244	205
Heifers up to 450kg		240	303	265	205	239	220
Heifers over 450kg		220	278	250	160	219	200
<b>Dropped Calves (£/head)</b>							
Continental Bulls		350	400	375	250	345	300
Continental Heifers		250	375	300	145	245	180
Friesian Bulls		140	250	170	40	130	60
Holstein Bulls		105	265	145	5	95	45

## DEADWEIGHT SHEEP TRADE

### NI SHEEP BASE QUOTES

(P/Kg DW)	This Week 30/10/23	Next Week 06/11/23
R3 Lambs up to 22kg	No Quotes Available	520p

### REPORTED SHEEP PRICES

(P/KG)	W/E 14/10/23	W/E 21/10/23	W/E 28/10/23
NI L/W Lambs	475.37	482.9	473.8
NI D/W Lambs	518.6	513.3	518.3
GB D/W Lambs	556.7	570.5	573.1
ROI D/W	532.5	541.1	545.6

### Deadweight Sheep Trade

Next week base quotes in the region of 520p/kg are expected for R3 grade lambs with the major plants paying up to 22kg.

Last week a large lamb throughput totalling 11,254 head passed through NI plants, as processors undertook production to reduce the impact of veterinary service strikes on the supply chain. This brings the total kill for October to 45,028 head an increase of 830 head or 1.8 per cent on the 44,198 lambs killed during September. Lamb exports for direct slaughter in ROI last week also increased from the previous week to total 7,602 head. This was an increase of 2,054 head from the previous week. Last week in NI the average deadweight lamb price reported an increase of 5p/kg to 518.3p/kg while the average R3 lamb price also increased 3.6p/kg to 522.6p/kg.

### Liveweight Sheep Trade

Smaller numbers of lambs passed through the sales rings last week with challenging weather conditions affecting vendors, and an absence of buyers due to factory closures and exports restrictions. Albeit while sales were smaller due to these disruptions, across the marts the trade was relatively steady on the previous week with the average price paid in Ballymena on Wednesday at 482p/kg, up 4p/kg from the previous week.

## LIVEWEIGHT SHEEP TRADE

### LATEST SHEEP MARTS (P/KG LW)

From: 28/10/23		Lambs			
To: 02/11/23		No	From	To	Avg
Saturday	Omagh	904	481	524	-
	Swatragh	1050	435	482	-
Monday	Kilrea	800	478	514	-
	Markethill	750	450	491	-
Tuesday	Saintfield	505	482	523	-
Wednesday	Ballymena	1108	465	500	482
	Enniskillen	602	465	502	-
	Armoy	254	466	510	-