

## DEADWEIGHT CATTLE TRADE

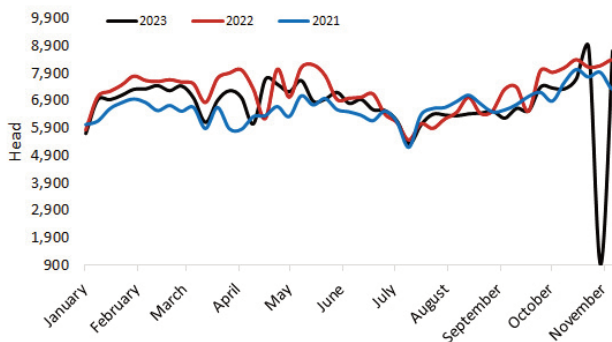
### NI FACTORY BASE QUOTES FOR CATTLE

(P/KG DW)	This Week 13/11/23	Next Week 20/11/23
<b>Prime</b>		
U-3	438 - 446p	440 - 446p
R-3	432 - 440p	434 - 440p
O+3	426 - 434p	428 - 434p
P+3	370 - 378p	372 - 378p
<b>Cows</b>		
O+3	298 - 320p	298 - 336p

Cow quotes vary depending on weight and grade. Pricing policies vary from plant to plant. Producers are advised to check pricing policies before presenting cattle for slaughter.

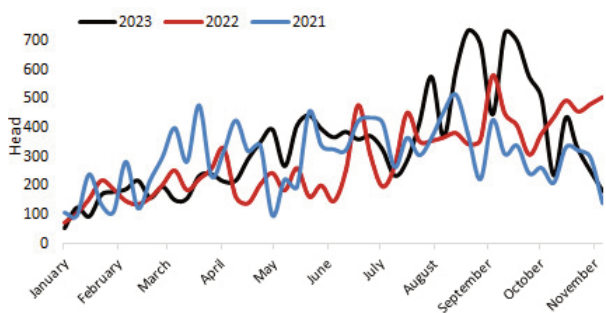
#### Prime Cattle Throughput to date 2021-2023

Source: DAERA.



#### Prime Cattle Imports to date 2021-2023

Source: DAERA.



### REPORTED NI CATTLE PRICES - P/KG

W/E 11/11/23	Steers	Heifers	Young Bulls
U3	464.5	468.9	443.1
R3	461.0	462.1	445.4
O+3	455.3	449.0	439.5

\*Prices exclude AA, HER and Organic cattle

### REPORTED COW PRICES NI - P/KG

W/E 11/11/23	Weight Bands			
	<220kg	220-250kg	250-280kg	>280kg
P1	201.0	217.1	229.5	245.5
P2	227.2	246.4	269.1	285.8
P3	218.1	266.1	286.8	295.5
O3	275.0	274.3	309.2	310.4
O4	196.0	304.8	307.9	311.8
R3	250.0	-	325.0	342.0

### Deadweight Cattle Trade

Base quotes from local NI plants for in spec U-3 grade steers and heifers ended this week at 438-446p/kg and quotes for O+3 grade cows ranged from 298-320p/kg. Improved base quotes are expected for all types of cattle early next week.

Last week a large throughput of 8,726 prime cattle and 2,850 cows were processed in local plants. Imports from ROI recommenced last week with 184 prime cattle and 150 cows imported to NI for direct slaughter. Meanwhile four prime cattle and 34 cows were exported from NI to ROI for direct slaughter last week.

NI experienced a softer trade last week, with price declines reported across all categories. R3 steers were back 0.1p/kg to 463.7p/kg, R3 heifers declined 3.4p/kg to 461.3p/kg, R3 young bulls came back 6.2p/kg to 446.9p/kg and O3 grading cows were back 8.5p/kg to 309.2p/kg last week.

Cattle trade in ROI reported improvements last week in sterling terms with R3 steers up by 1.1p/kg to 403.3p/kg, and R3 heifers up by the same margin to 408.4p/kg. Meanwhile in ROI last week, R3 young bulls declined by 1.3p/kg to 395.5p/kg and O3 cows were back by 0.8p/kg to 327.7p/kg.

Cow trade softened across much of GB with the exemption of the Midlands and Wales, which reported increases in prices paid for cows. The Midlands and Wales also experienced the largest increase in prices paid on average for steers, up 3.6p/kg and heifers, up 3.9p/kg.

### LAST WEEK'S DEADWEIGHT CATTLE PRICES (UK / ROI)

W/E 11/11/23	Northern Ireland	Rep of Ireland	Scotland	Northern England	Midlands & Wales	Southern England	GB
Steers	U3	465.6	412.2	502.8	494.3	493.5	492.3
	R3	463.7	403.3	501.8	490.2	486.2	485.4
	R4	463.0	402.5	500.5	492.2	480.0	484.3
	AVG	454.6	-	498.0	483.8	472.8	473.1
Heifers	U3	466.8	418.2	503.7	494.2	498.6	495.2
	R3	461.3	408.4	499.5	486.4	484.9	486.3
	R4	462.0	409.1	497.1	490.2	482.8	485.5
	AVG	453.7	-	495.2	476.9	467.0	463.2
Young Bulls	U3	449.3	403.2	497.1	477.9	480.8	492.7
	R3	446.9	395.5	487.7	468.4	475.6	478.6
	O3	430.2	381.9	440.8	434.9	441.8	471.0
	AVG	435.1	-	473.0	465.7	458.1	450.5
Prime Cattle Price Reported	7,370	-	5,447	6,979	7,564	4,970	24,960
Cows	O3	309.2	327.7	342.5	325.1	327.0	324.0
	O4	310.8	329.3	347.5	328.4	331.0	324.9
	P2	271.8	277.8	297.8	291.8	288.2	290.0
	AVG	268.2	-	343.3	303.6	287.5	286.4

Notes: (i) Prices are p/kg Sterling-ROI prices converted at 1 euro=87.03p Stg  
(ii) Shading indicates a lower price than the previous week.  
(iii) AVG is the average of all grades in the category, not just those listed

## LIVEWEIGHT CATTLE TRADE

### LATEST LIVEWEIGHT CATTLE MART PRICES NI

W/E 11/11/23	1st QUALITY			2nd QUALITY		
	From	To	Avg	From	To	Avg
<b>Finished Cattle (p/kg)</b>						
Steers	260	293	272	210	259	230
Friesians	225	243	234	-	-	-
Heifers	254	291	268	200	253	225
Beef Cows	177	258	200	120	175	145
Dairy Cows	126	167	138	50	125	85
<b>Store Cattle (p/kg)</b>						
Bullocks up to 400kg	250	356	290	200	249	230
Bullocks 400kg - 500kg	240	296	260	185	239	215
Bullocks over 500kg	230	290	250	180	229	205
Heifers up to 450kg	250	314	275	200	249	220
Heifers over 450kg	220	269	240	167	219	190
<b>Dropped Calves (£/head)</b>						
Continental Bulls	350	650	430	245	345	290
Continental Heifers	300	460	375	160	290	230
Friesian Bulls	100	190	140	25	90	55
Holstein Bulls	85	180	125	16	80	45

## DEADWEIGHT SHEEP TRADE

### NI SHEEP BASE QUOTES

(P/Kg DW)	This Week 13/11/23	Next Week 20/11/23
R3 Lamb up to 22kg	520 - 525p	530p

### REPORTED SHEEP PRICES

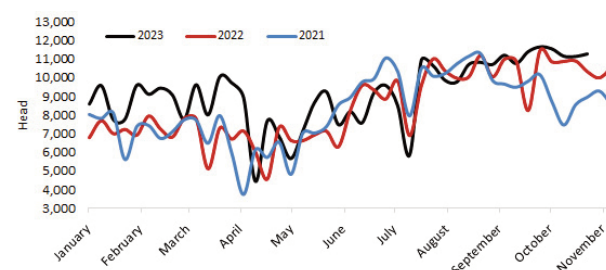
(P/KG)	W/E 28/10/23	W/E 04/11/23	W/E 11/11/23
NI L/W Lambs	473.8	475.8	472.5
NI D/W Lambs	518.3	-	525.0
GB D/W Lambs	573.1	569.8	577.9
ROI D/W	545.6	549.8	553.1

### Deadweight Sheep Trade

Base quotes from the major NI processing plants for R3 grading lambs ended this week at 520-525p/kg with plants paying up to 22kg. Increased base quotes of 530p/kg are expected for R3 lambs early next week.

Sheep slaughterings in the local plants resumed last week with 10,692 lambs processed. The deadweight lamb price in NI increased 6.7p/kg from the w/e 28/10/23, to a price of 525p/kg. Lamb prices in ROI were up 3.3p/kg to 553.1p/kg. A total of 7,740 lambs were exported to ROI for direct slaughter last week, an increase of 2,762 lambs from the week previous.

#### Hogget/Lamb Throughput to date 2021-2023 Source: DAERA



## LIVEWEIGHT SHEEP TRADE

### LATEST SHEEP MARTS (P/KG LW)

From: 11/11/23		Lambs			
To: 16/11/23		No	From	To	Avg
Saturday	Omagh	697	477	523	-
	Swatragh	950	464	553	-
Monday	Kilrea	1200	478	509	-
	Markethill	1170	460	496	-
Tuesday	Saintfield	870	478	540	-
	Rathfriland	833	471	509	481
Wednesday	Ballymena	3249	475	529	491
	Enniskillen	682	470	510	-
	Armoy	641	470	522	-

Information supplied by LMC / DAERA/ AHDB/ DAFM

LMC does not guarantee the accuracy or completeness of any third party information provided in this publication. LMC hereby disclaims any responsibility for error, omission or inaccuracy in the information, misinterpretation or any other loss, disappointment, negligence or damage caused by reliance on third party information. Not for further publication or distribution without prior permission from LMC

Contact LMC

T: 028 9263 3000  
E: bulletin@lmcni.com  
W: www.lmcni.com

Information

FQAS helpline: 028 9263 3024  
Answerphone: 028 9263 3011