

DEADWEIGHT CATTLE TRADE

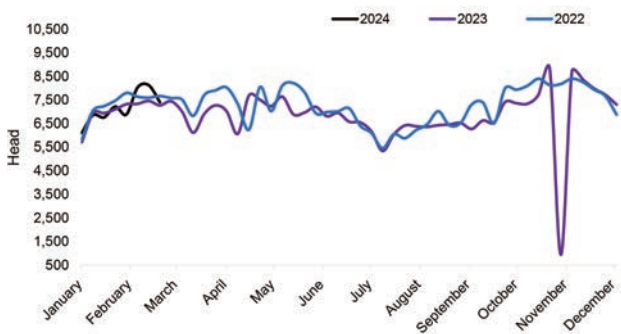
NI FACTORY BASE QUOTES FOR CATTLE

(P/KG DW)	This Week 26/02/24	Next Week 04/03/24
Prime		
U-3	458 - 464p	458 - 464p
R-3	452 - 458p	452 - 458p
O+3	446 - 452p	446 - 452p
P+3	390 - 396p	390 - 396p
Cows		
O+3	322 - 328p	322 - 328p

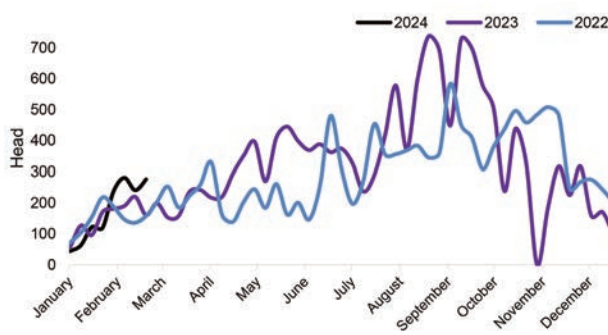
Cow quotes vary depending on weight and grade. Pricing policies vary from plant to plant. Producers are advised to check pricing policies before presenting cattle for slaughter.

Prime Cattle Throughput to date 2022-2024.

Source: DAERA.



Prime Cattle Imports from ROI for direct slaughter to date 2022-2024. Source: DAERA.



Market Information Notice

LMC has experienced technical issues in collating some reports including the non-premium cattle pricing reported on a weekly basis within the LMC Bulletin. We wish to inform stakeholders we are currently working to resolve these IT issues as a matter of urgency and apologise for any inconvenience the absence of this service has caused.

REPORTED COW PRICES NI - P/KG

W/E 24/02/24	Weight Bands			
	<220kg	220-250kg	250-280kg	>280kg
P1	221.0	238.8	253.7	270.9
P2	242.5	270.2	290.9	311.3
P3	255.3	288.4	301.9	317.4
O3	-	336.0	316.9	339.9
O4	310.0	291.4	336.4	336.3
R3	-	-	378.0	363.8

Deadweight Cattle Trade

Prime cattle throughput in local plants last week totalled 7,412 head, a decline of 718 head from the previous week, with a smaller cow throughput also reported. Cow throughput in NI last week totalled 2,206 head, back 268 head from the week before. Import levels to local plants remained at high levels last week with 236 steers, 40 heifers and 132 cows imported from ROI. This was an increase of 35 prime cattle and 60 cows fewer than the previous week's levels. Meanwhile two heifers and three cows travelled to ROI for direct slaughter last week.

The deadweight cattle trade in NI softened for all types of cattle last week. The average price paid for steers, heifers and young bulls was back 4.7p/kg, 3.9p/kg and 6.4p/kg respectively. The average price paid in NI for an R3 grade steer was 480.1p/kg with 479.8p/kg paid on average for an R3 grading heifer. With some reports from industry of tight supplies of cattle for next week the trade is expected to remain relatively steady.

In GB last week the deadweight trade for prime cattle reported a mixed picture across the regions. The average price paid for a steer was back by a marginal 0.2p/kg from the previous week at 497.1p/kg, meanwhile, the average price paid for a heifer was up 0.4p/kg to 495p/kg. The cow trade strengthened across all GB regions 1.9p/kg - 2.9p/kg with an average O3 cow price of 368.4p/kg reported. This was 29.3p/kg ahead of the equivalent price in NI last week.

In ROI the deadweight cattle trade reported further declines last week in both euro and sterling terms with declines of a similar level reported across all prime cattle categories. The cow trade came under the greatest pressure week on week.

LAST WEEK'S DEADWEIGHT CATTLE PRICES (UK / ROI)

W/E 24/02/24		Northern Ireland	Rep of Ireland	Scotland	Northern England	Midlands & Wales	Southern England	GB
Steers	U3	483.3	450.2	508.4	508.8	507.6	509.5	508.5
	R3	480.1	442.2	507.9	507.4	502.8	500.5	504.2
	R4	479.9	444.5	506.9	507.3	499.3	499.5	504.7
	O3	469.3	433.7	496.0	488.7	488.1	480.1	486.6
	AVG	471.0	-	504.9	500.9	493.4	489.1	497.1
Heifers	U3	485.5	456.4	515.3	509.4	513.3	510.2	512.3
	R3	479.8	446.7	509.2	505.5	503.3	497.8	503.2
	R4	477.2	450.4	508.9	506.5	500.3	499.3	504.8
	O3	467.8	439.7	493.8	484.8	482.8	478.6	482.8
	AVG	471.5	-	506.5	497.1	490.8	485.8	495.0
Young Bulls	U3	463.7	440.8	486.1	489.7	501.0	474.1	491.1
	R3	462.8	430.3	491.6	487.0	493.4	491.7	490.5
	O3	447.8	417.2	465.2	464.0	458.8	464.9	462.0
	AVG	450.8	-	475.1	476.8	466.0	426.6	467.3
	Prime Cattle Price Reported	6,392	-	6,085	6,991	8,454	5,367	26,897
Cows	O3	339.1	349.6	367.9	369.1	369.6	364.9	368.4
	O4	335.8	349.3	368.1	373.5	370.0	367.3	370.4
	P2	293.1	318.1	329.5	327.3	325.9	330.7	327.5
	P3	312.0	334.4	335.7	347.7	344.3	346.9	345.3
	AVG	306.4	-	363.6	354.8	344.4	336.7	347.2

Notes: (i) Prices are p/kg Sterling-ROI prices converted at 1 euro=85.54p Stg
(ii) Shading indicates a lower price than the previous week.
(iii) AVG is the average of all grades in the category, not just those listed

LIVEWEIGHT CATTLE TRADE

LATEST LIVEWEIGHT CATTLE MART PRICES NI

W/E 24/02/24	1st QUALITY			2nd QUALITY		
	From	To	Avg	From	To	Avg
Finished Cattle (p/kg)						
Steers	250	296	275	200	249	225
Friesians	218	238	225	185	217	200
Heifers	270	308	285	218	269	243
Beef Cows	216	281	230	140	215	180
Dairy Cows	140	183	152	85	139	112
Store Cattle (p/kg)						
Bullocks up to 400kg	320	421	350	245	319	275
Bullocks 400kg - 500kg	290	374	315	215	289	250
Bullocks over 500kg	260	308	280	200	259	230
Heifers up to 450kg	300	394	330	230	299	260
Heifers over 450kg	280	358	300	215	279	245
Dropped Calves (£/head)						
Continental Bulls	420	590	455	305	415	360
Continental Heifers	360	490	400	240	355	295
Friesian Bulls	110	195	150	50	105	80
Holstein Bulls	50	100	75	1	45	30

DEADWEIGHT SHEEP TRADE

NI SHEEP BASE QUOTES

(P/Kg DW)	This Week 26/02/24	Next Week 04/03/24
R3 Hoggets up to 22kg	630p	630p
R3 Hoggets up to 22.5kg	640p	630 - 640p

REPORTED SHEEP PRICES

(P/KG)	W/E 10/02/24	W/E 17/02/24	W/E 24/02/24
NI L/W Hoggets	536.8	569.1	570.9
NI D/W Hoggets	578.2	604.0	633.5
GB D/W Hoggets	662.2	689.9	699.6
ROI D/W	585.2	598.3	626.2

Deadweight Sheep Trade

Base quotes for R3 grading hoggets ended this week at 630-640p/kg with similar quotes expected early next week. Two of the major processors are quoting to 22.5kg. Producers are reminded current specifications require hoggets with fat scores of 2 and 3, and that higher prices are available for hoggets that meet market specifications. During the four weeks ended 24 February the average carcass weight of hoggets slaughtered in local plants was 22.1kg back on the corresponding period last year when the average hogget carcass was 22.3kg.

The average deadweight hogget price in NI last week strengthened 29.5p/kg from the previous week to 633.5p/kg with an average R3 hogget price of 637.1p/kg. Meanwhile the trade in local marts for finished hoggets was relatively steady on the previous week with an average price of 570.9p/kg reported by DAERA. The cull ewe trade in local marts also remains strong. In GB and ROI the combined impact of Easter demand and disrupted trade flows in the Red Sea affecting food import levels is strengthening the deadweight sheep trade. Last week in GB the deadweight hogget price was up almost 10p/kg week on week to 699.6p/kg. Similarly in ROI the average price paid for deadweight hoggets increased by the equivalent of 27.9p/kg to 626.2p/kg last week.

LIVEWEIGHT SHEEP TRADE

LATEST SHEEP MARTS (P/KG LW)

From: 24/02/24		Hoggets			
To: 29/02/24		No	From	To	Avg
Saturday	Omagh	876	563	667	-
	Swatragh	975	565	629	-
Monday	Kilrea	950	583	670	-
	Markethill	950	570	619	-
Tuesday	Saintfield	525	590	658	-
	Rathfriland	564	590	641	594
Wednesday	Ballymena	1417	540	687	575
	Enniskillen	790	550	625	-
	Armoyle	534	570	615	-

LMC'S NEW CHIEF EXECUTIVE HITS THE GROUND RUNNING

Colin Smith takes over the role as Chief Executive of the Livestock and Meat Commission for Northern Ireland (LMC) at a time of significant change for the local beef and sheep sectors.

The period ahead will see significant change in the way that support is made available to the ruminant sectors. In addition, the implementation of Northern Ireland's climate change legislation and the accompanying roll-out of programmes such as the carbon footprinting programme will mean that farmers will need supported to adjust to any associated impacts of these changes to ensure the long term profitability of the sector. And of course, the challenge of maximising market outlet opportunities for Farm Quality Assured beef and lamb from Northern Ireland will always remain a priority.

Operationally, LMC finds itself in the position of a recently appointed board and newly appointed chief executive interfacing with a newly appointed farm minister: Andrew Muir MLA. Colin Smith sees this as an opportunity as he settles into his new role and he is quick to point out, one issue will take priority over the coming weeks: the development of a new, three-year strategic plan for LMC.

Image 1: Newly appointed Chief Executive of LMC, Colin Smith.



Colin explained: "The current plan runs its length at the end of March and with a new board now in place we have been working hard to ensure a new three-year vision is agreed for the Commission. "It is not a case of LMC being prescriptive, where this issue is concerned: the job of the board and the Commission staff is to secure an agreed way forward, centred on the views and recommendations expressed by all of our key stakeholder groups. "This will include primary producers, the processing sector and all other stakeholder organisations, including the Department of Agriculture, Environment and Rural Affairs (DAERA), with a role in delivering a sustainable future for Northern Ireland's cattle and sheep industries."

Colin Smith firmly believes that LMC is strongly positioned to look to the future with a high degree of confidence. He explained: "In the last three years LMC has continued to build on our core programmes. LMC's work falls into four broad areas:

Farm Quality Assurance

Farm Quality Assurance is in a sense the cornerstone of many LMC operations. With over 11,500 members, FQAS is established as an integral aspect of the beef and lamb sector in NI and it will continue to be a key area of work going forward as we build upon the strong foundations

in place. This will include working proactively with stakeholders to address some of the biggest challenges facing the beef and lamb sectors at present, such as evidencing our sustainable farming practices.

Education and consumer promotions

This year the Commission will celebrate 25 years of its education programme. It's highly encouraging to see the sustained positive growth we have achieved in this area. LMC now deliver in the region of 500 demonstrations per year, reaching around 10,000 pupils. Branching out to provide cookery demonstrations and supporting resources to primary schools is a relatively new area for LMC, having launched fully in 2022 following a successful pilot the year prior. We look forward to the return of our primary programme this spring and the forthcoming launch of a recipe book tailored specifically to meet the educational needs of Key Stage 2 pupils.

Market Information

The Commission's market information services are highly valued within the industry. The service supports producers and processors with their decision making by making available accurate and timely information that creates a better understanding of the trade. LMC is committed to creating an environment where its stakeholders are well-informed whether this is through the provision of basic statistics, further analysis / examination of this data or the delivery of information through events.

Industry development - sustainability

Sustainability will be an area of growth for LMC. Overarching the sustainability agenda in NI is the need to comply with relevant legislation. LMC is playing a central role with industry and government partners in the development and roll-out of several important sustainability initiatives including livestock genetic improvement, measuring and managing carbon emissions and the reduction of industry losses through animal health and welfare improvements.

"Our active participation in this broad portfolio of work and the fact that LMC is being asked to develop activity in the area of sustainability reflects, I believe, the confidence that exists amongst other stakeholder organisations in LMC's ability to deliver, where these important initiatives are concerned. "And, obviously, we want to build on this for the future."

Adding value

The history of LMC is fully reflected in the organisation's role in delivering for the redmeat sectors at the very heart of Northern Ireland's farming and food sectors.

This has been achieved, in many ways, through the use of Commission funding to pump prime debates and processes that have had an overarching and positive impact on the beef and sheep sectors. A case in point was LMC's commissioning of a report from the Andersons' Centre, in 2021. This document paved the way for the changes in beef and sheep support that are now becoming a reality in Northern Ireland. Significantly, the report identified the ways and means through which a sustainability agenda - in all its manifestations - can be implemented while, still, maintaining the production base associated with the local beef and sheep sectors. Similarly, post pandemic, LMC worked closely with the red meat industry to help

quantify the specific losses incurred as a direct consequence of Covid-19 and the evidence gathered was a key factor in securing the allocation of over £7.2m of financial support to beef and sheep farmers at this time.

Celebrating 25 Years of LMC's Education Programme

Another example of the Commission adding real value to the funding streams that it receives relates to the organisation's relationship with schools, a programme that celebrates its 25th anniversary this year. LMC cookery demonstrations have been tremendously popular with secondary schools throughout Northern Ireland for a quarter of a century. On the back of this success, the service has been extended to include primary schools.

At their most fundamental level the cookery demonstrators deliver important messages to young people regarding the nutritional importance of Northern Ireland Farm Quality Assured (NIFQA) beef and lamb, food safety, food hygiene, quality assurance, provenance, and cooking methods. However, such is the relationship that exists between the schools' sector and the Commission that many teachers will now seek the advice of LMC when it comes to matters concerning the role of beef and lamb in the diet and how the subject of what actually constitutes a balanced diet can be best communicated in the classroom.

This is clear evidence of the status enjoyed by LMC in representing an unbiased source of information, where dietary matters are concerned. In reality, it is not possible to put a value on the scope of this relationship, such is its significance. All of this has been secured on the back of the credibility

associated with LMC and all of the functions it performs.

Working at pace

Colin Smith is fully aware that he won't have much time to settle into his new role. However, having held the position of acting chief executive for the past four months, this has helped to facilitate the transition process. He commented: "Priority number one is to secure agreement on a new three-year, strategic plan. This will require a comprehensive engagement process with all stakeholder organisations. And the work has already started. "LMC has proven itself over many years as an organisation that can deliver for livestock farmers and Northern Ireland's entire red meat sector. The new Commission board and staff members want to build on this for the future."

Colin referenced the significance of Northern Ireland having a new Minister for Agriculture, Environment and Rural Affairs: Andrew Muir MLA. Executive Ministers will also be involved in agreeing future support measures for the farming and food sectors and Stormont will have a central role in developing policies that implement Northern Ireland's Climate Change Act. "LMC has already reached out to Minister Muir," Colin Smith confirmed. "It's important that the minister is fully aware of the work carried out by LMC and our plans for the future."

Colin concluded:

"There is a tremendous job of work to be carried out by everyone involved with LMC. And this must be achieved in ways that deliver best value for money to the cattle and sheep industry as a whole."

REGISTRATION OPEN FOR IFJ / LMC SPRING CONFERENCE



NI 2024 SPRING CONFERENCE

THURSDAY 21 MARCH
THE GLENAVON HOUSE HOTEL, COOKSTOWN
9AM TO 1PM

The Irish Farmers Journal and Livestock and Meat Commission event, in association with The Andersons Centre, will take an in-depth look at the prospects for agriculture in 2024.

Register now at www.ifj.ie/springconference
Free to attend | Booklet provided



Registration is now open for the Irish Farmers Journal spring conference, taking place in partnership with the Livestock and Meat Commission (LMC) on Thursday 21 March at the Glenavon House Hotel, Cookstown. The event, which will look at prospects for agriculture in 2024, will be addressed by Michael Haverty, a partner and senior research consultant at The Andersons Centre. Michael has presented at this annual event on a number of occasions and is well-known as someone who has unrivalled expertise in farm policy issues. He will provide an in-depth analysis of current profitability and performance of agriculture in NI and across the UK, as well as looking at future changes to government policy, trade issues and wider risks to farming. **The event opens at 9am for a 9.30am start and will run to 12.30pm. There is no fee to attend. To register go to www.ifj.ie/springconference.**



Contact us:

W: www.lmcni.com

T: 028 9263 3000

LMC does not guarantee the accuracy or completeness of any third party information provided in or included with this publication. LMC hereby disclaims any responsibility for error, omission or inaccuracy in the information, misinterpretation or any other loss, disappointment, negligence or damage caused by reliance on third party information.

Not for further publication or distribution without prior permission from LMC

