

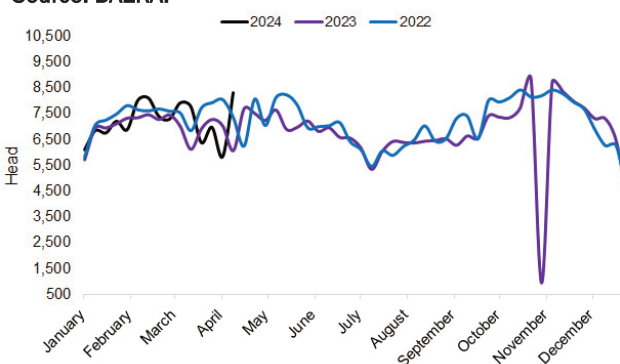
DEADWEIGHT CATTLE TRADE

NI FACTORY BASE QUOTES FOR CATTLE

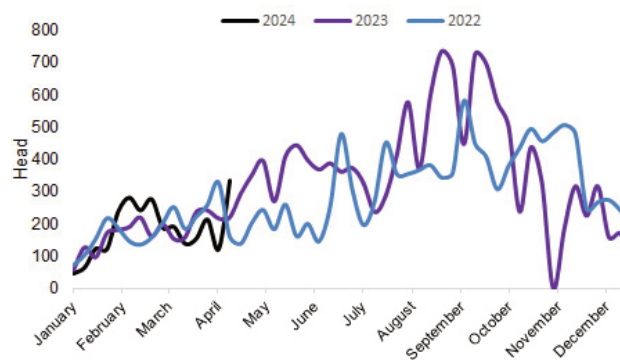
| (P/KG DW) | This Week 15/04/24 | Next Week 22/04/24 |
|--------------|-----------------------|-----------------------|
| Prime | | |
| U-3 | 458 - 466p | 458 - 466p |
| R-3 | 452 - 460p | 452 - 460p |
| O+3 | 446 - 454p | 446 - 454p |
| P+3 | 390 - 398p | 390 - 398p |
| Cows | | |
| O+3 | 325 - 340p | 326 - 340p |

Cow quotes vary depending on weight and grade. Pricing policies vary from plant to plant. Producers are advised to check pricing policies before presenting cattle for slaughter.

Prime Cattle Throughput in NI to date 2022-2024.
Source: DAERA.



Prime Cattle Imports from ROI for Direct Slaughter to date 2022-2024. Source: DAERA.



REPORTED NI CATTLE PRICES - P/KG

| W/E 13/04/24 | Steers | Heifers | Young Bulls |
|-----------------|--------|---------|----------------|
| U3 | 482.9 | 484.2 | 476.6 |
| R3 | 475.9 | 475.7 | 464.2 |
| O+3 | 467.7 | 469.9 | 451.2 |

*Prices exclude AA, HER, WAG and Organic cattle

REPORTED COW PRICES NI - P/KG

| W/E 13/04/24 | Weight Bands | | | |
|-----------------|--------------|-----------|-----------|--------|
| | <220kg | 220-250kg | 250-280kg | >280kg |
| P1 | 223.7 | 239.9 | 255.3 | 271.0 |
| P2 | 250.3 | 272.5 | 294.0 | 314.4 |
| P3 | 264.4 | 294.5 | 312.9 | 321.8 |
| O3 | 234.0 | 320.0 | 327.5 | 336.8 |
| O4 | 295.0 | 335.0 | 340.1 | 343.1 |
| R3 | - | - | - | 361.4 |

Deadweight Cattle Trade

The deadweight trade for prime cattle in NI came under some pressure last week due to an increased supply, with 8,332 prime cattle slaughtered in local plants. This was the highest weekly prime cattle throughput in NI since November 2023. There was also a peak in prime cattle imports last week with 334 head moving from ROI, with October 2023 being the last time a similar weekly import level was recorded. Consequently, the average price paid in NI for steers, heifers and young bulls was back 2.3p/kg, 1.2p/kg and 1.7p/kg respectively. Meanwhile the cow trade strengthened in NI with average cow prices up 3.6p/kg to 300.7p/kg. Last week 2,304 cows were processed locally with 128 cows imported from ROI last week. Early next week a similar trade is expected with preliminary base quotes from the major processors remaining steady for all types of cattle.

Across the water in GB, pressure on the prime cattle tradelast week stemmed from the Midlands and Wales region where the trade was back for all types of prime cattle. This saw the overall GB average for steers and heifers come back. Steers reported a 0.7p/kg decline to 487.5p/kg while heifers reported a 1.5p/kg decrease to an average of 484.11p/kg. The trade for young bulls increased overall last week up 3.7p/kg to 471.7p/kg with the cow trade in GB also reporting improvements last week.

In ROI last week the deadweight cattle trade reported a mixed picture in both sterling and euro terms. Steers came under the greatest pressure with an R3 steer back by the equivalent of 1.6p/kg to 447.3p/kg on average. R3 heifers reported a 0.9p/kg decline to 452.4p/kg. The cow trade in ROI remains strong with an O3 cow up 0.7p/kg on average last week to 363.9p/kg, which was 28.7p/kg ahead of the corresponding price in NI.

LAST WEEK'S DEADWEIGHT CATTLE PRICES (UK / ROI)

| W/E 13/04/24 | Northern Ireland | Rep of Ireland | Scotland | Northern England | Midlands & Wales | Southern England | GB |
|------------------------------------|---------------------|-------------------|----------|---------------------|---------------------|---------------------|--------|
| Steers | | | | | | | |
| U3 | 483.4 | 453.6 | 496.2 | 502.2 | 498.6 | 499.8 | 499.2 |
| R3 | 479.1 | 447.3 | 493.0 | 498.4 | 492.5 | 490.3 | 493.4 |
| R4 | 478.6 | 448.3 | 494.4 | 498.1 | 491.0 | 491.5 | 494.6 |
| O3 | 468.8 | 439.1 | 479.7 | 482.2 | 478.9 | 477.8 | 479.5 |
| AVG | 470.4 | - | 491.5 | 492.1 | 483.3 | 483.4 | 487.5 |
| Heifers | | | | | | | |
| U3 | 484.5 | 463.5 | 503.8 | 505.8 | 500.9 | 500.0 | 502.4 |
| R3 | 480.0 | 452.4 | 493.5 | 497.3 | 491.6 | 489.4 | 492.5 |
| R4 | 478.4 | 456.3 | 495.4 | 497.6 | 490.9 | 489.6 | 493.8 |
| O3 | 469.0 | 444.3 | 472.5 | 476.4 | 466.9 | 472.6 | 471.1 |
| AVG | 471.1 | - | 492.8 | 485.6 | 480.0 | 479.6 | 484.1 |
| Young Bulls | | | | | | | |
| U3 | 472.5 | 446.7 | 482.1 | 490.9 | 493.1 | 493.4 | 490.0 |
| R3 | 462.3 | 437.9 | 482.1 | 484.0 | 481.8 | 488.7 | 482.8 |
| O3 | 451.2 | 424.7 | 461.7 | 455.9 | 457.8 | 447.8 | 457.9 |
| AVG | 454.1 | - | 468.1 | 475.5 | 471.4 | 470.8 | 471.7 |
| Prime Cattle Price Reported | 6,947 | - | 5,853 | 6,802 | 8,461 | 5,479 | 26,595 |
| Cows | | | | | | | |
| O3 | 335.2 | 363.9 | 387.4 | 382.5 | 383.9 | 375.6 | 382.1 |
| O4 | 342.6 | 364.1 | 387.1 | 386.0 | 385.9 | 379.6 | 384.8 |
| P2 | 297.8 | 327.9 | 339.8 | 345.1 | 337.7 | 336.3 | 339.0 |
| P3 | 318.3 | 348.4 | 354.6 | 359.5 | 355.9 | 358.4 | 357.3 |
| AVG | 300.7 | - | 386.7 | 364.5 | 352.7 | 342.5 | 356.0 |

Notes: (i) Prices are p/kg Sterling-ROI prices converted at 1 euro=85.58p Stg
(ii) Shading indicates a lower price than the previous week.
(iii) AVG is the average of all grades in the category, not just those listed

LIVEWEIGHT CATTLE TRADE

LATEST LIVEWEIGHT CATTLE MART PRICES NI

| W/E 13/04/24 | 1st QUALITY | | | 2nd QUALITY | | |
|--------------------------------|-------------|-----|-----|-------------|-----|-----|
| | From | To | Avg | From | To | Avg |
| Finished Cattle (p/kg) | | | | | | |
| Steers | 275 | 306 | 288 | 225 | 274 | 248 |
| Friesians | 215 | 236 | 223 | 186 | 211 | 203 |
| Heifers | 275 | 314 | 290 | 220 | 274 | 245 |
| Beef Cows | 224 | 274 | 244 | 155 | 223 | 188 |
| Dairy Cows | 140 | 169 | 152 | 70 | 139 | 105 |
| Store Cattle (p/kg) | | | | | | |
| Steers up to 400kg | 320 | 400 | 342 | 225 | 319 | 265 |
| Steers 400kg - 500kg | 290 | 372 | 315 | 200 | 289 | 245 |
| Steers over 500kg | 270 | 308 | 285 | 186 | 269 | 225 |
| Heifers up to 450kg | 315 | 431 | 335 | 220 | 314 | 260 |
| Heifers over 450kg | 265 | 354 | 288 | 195 | 264 | 225 |
| Dropped Calves (£/head) | | | | | | |
| Continental Bulls | 400 | 545 | 445 | 285 | 395 | 340 |
| Continental Heifers | 365 | 510 | 410 | 240 | 360 | 300 |
| Friesian Bulls | 120 | 220 | 150 | 40 | 115 | 75 |
| Holstein Bulls | 85 | 165 | 120 | 1 | 80 | 45 |

DEADWEIGHT SHEEP TRADE

NI SHEEP BASE QUOTES

| (P/Kg DW) | This Week 15/04/24 | Next Week 22/04/24 |
|-------------------------|-----------------------|-----------------------|
| R3 Hoggets up to 22kg | 750p | 790p |
| R3 Hoggets up to 22.5kg | 720p | 780 - 790p |

REPORTED NI SHEEP PRICES

| (P/KG) | W/E 30/03/24 | W/E 06/04/24 | W/E 13/04/24 |
|---------------------|-----------------|-----------------|-----------------|
| D/W R3 Hoggets | 723.1 | 725.5 | 733.9 |
| D/W Hoggets | 719.7 | 728.1 | 735.4 |
| L/W Hoggets | 619.5 | 632.8 | 641.5 |
| D/W R3 Spring Lambs | 808.3 | 804.1 | 795.7 |
| D/W Spring Lambs | 797.5 | 796.5 | 787.1 |
| L/W Spring Lambs | 787.8 | 765.3 | 754.6 |

REGIONAL SHEEP PRICES (GB / ROI)

| | | | |
|-----------------|-------|-------|-------|
| GB D/W Hoggets | 816.3 | 829.5 | 850.7 |
| ROI D/W Hoggets | 738.1 | 744.5 | 750.8 |

Sheep Trade

The deadweight hogget trade reported a strong recovery this week with a further strengthening expected next week. Preliminary base quotes for early next week for R3 grade hoggets are in the region of 780-790p/kg up to 22.5kg. Base quotes for spring lambs are not currently available with small numbers being slaughtered relative to hogget throughput levels.

Supplies of prime sheep for slaughter in NI continue to tighten in line with seasonal trends, with 5,225 processed in local plants last week. This was the smallest weekly hogget kill from the corresponding week last year when 4,443 head were processed. Live exports of hoggets/lambs for direct slaughter in ROI also declined by almost 1,100 head last week to total 5,263 head, which was the lowest weekly export consignment during the year to date.

Last week the average price paid for a deadweight hogget in NI was up 8.4p/kg to 735.4p/kg, while spring lambs were back 8.4p/kg on the previous week to 787.1p/kg. The GB deadweight hogget price reached a record high last week surging 21.2p/kg week on week to 850.7p/kg. In ROI the hogget market also continues to strengthen with the average price paid last week up by the equivalent of 6.3p/kg to 750.8p/kg.

LIVEWEIGHT SHEEP TRADE

LATEST SHEEP MARTS (P/KG LW)

| From: 13/04/24 | | Hoggets | | | Spring Lambs | | | | |
|----------------|-------------|---------|------|-----|--------------|-----|------|-----|-----|
| | | No | From | To | Avg | No | From | To | Avg |
| Saturday | Omagh | 252 | 643 | 725 | - | 13 | 728 | 756 | - |
| | Swatragh | 650 | 729 | 773 | - | - | - | - | - |
| Monday | Kilrea | 400 | 740 | 816 | - | 100 | 786 | 869 | - |
| | Markethill | 380 | 680 | 749 | - | 100 | 760 | 879 | - |
| Tuesday | Saintfield | 420 | 690 | 809 | - | - | - | - | - |
| | Rathfriland | 337 | 658 | 796 | 738 | 103 | 750 | 787 | 768 |
| Wednesday | Ballymena | 1,006 | 660 | 795 | 715 | 228 | 800 | 900 | 830 |
| | Enniskillen | 390 | 670 | 798 | - | 78 | 770 | 856 | - |
| | Armoyle | 206 | 720 | 800 | - | 22 | 770 | 825 | - |