



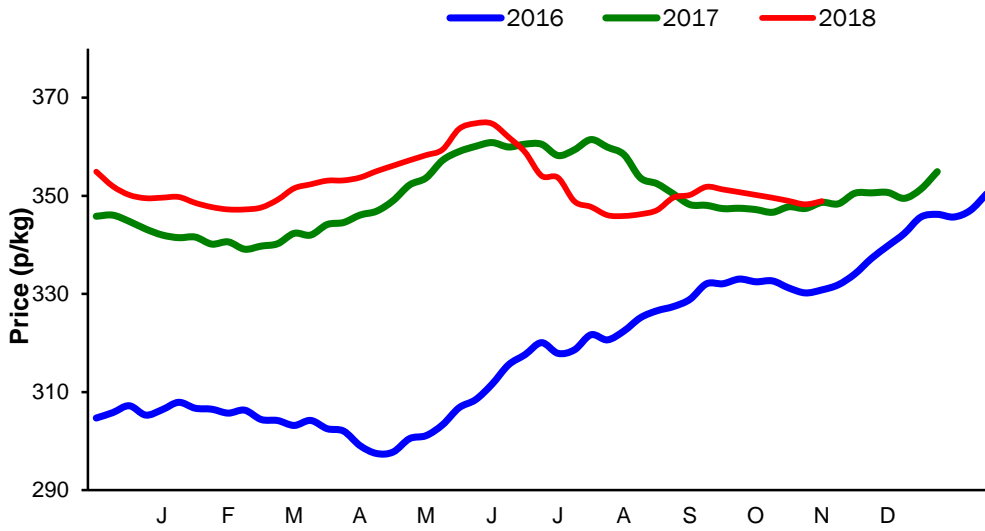
**Monthly Economic Review**  
**October 2018**

## Contents

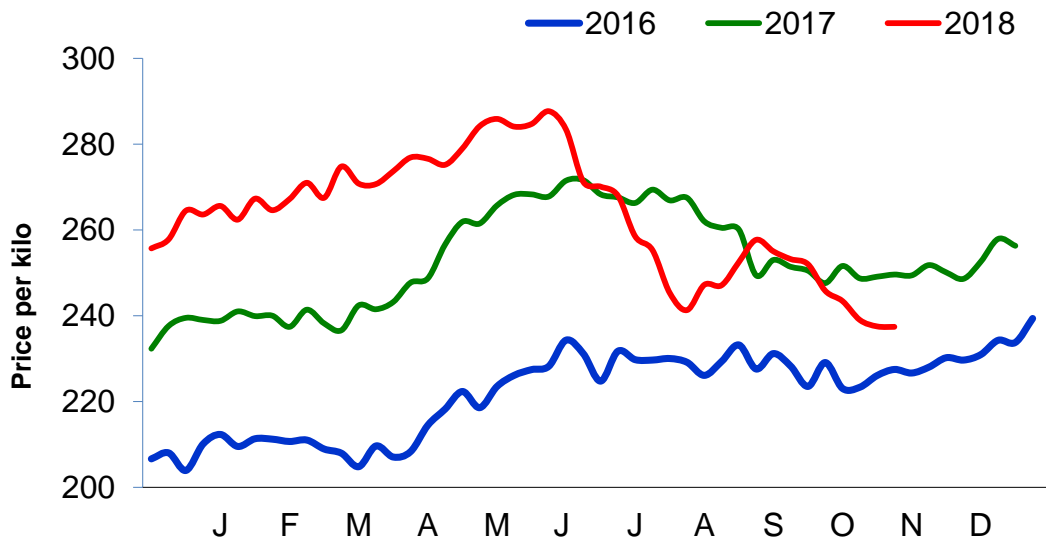
Contents.....	2
Cattle Prices .....	3
Average NI Clean Cattle Price .....	3
Average NI Cow Price.....	3
Cattle Slaughtering.....	4
NI Clean Cattle Slaughtering – Cumulative .....	4
NI Weekly Clean Cattle Slaughtering.....	4
NI Weekly Cow Slaughtering .....	5
Sheep Prices.....	6
Average NI Lamb / Hogget Price .....	6
Sheep Slaughtering.....	7
Cumulative Lamb & Hogget Slaughtering .....	7
Total Weekly Lamb & Hogget Slaughtering .....	7
Total Weekly Ewe and Ram Slaughtering.....	7
Total Carcase Weight Produced for the Food Chain.....	8
Change in Throughput / Production .....	9
Supply and Price.....	10
NI Lamb/Hogget Kill vs. Average Lamb / Hogget Price .....	10
NI Clean Cattle Kill vs. Average Clean Cattle Price.....	10
British Isles Price Comparisons .....	11
UK Average Cow Prices .....	11
Weekly UK Cow Prices .....	11
British Isles R3 Steer Price .....	12
British Isles R4 Steer Price .....	12
British Isles Average R3 and R4 Steer price .....	13
British Isles R3 Heifer Price .....	14
British Isles R4 Heifer Price .....	14
British Isles Average R3 and R4 Heifer price.....	15
Exchange Rate £ / Euro .....	16
Imports.....	17
Monthly Live Imports of Cattle into NI for Direct Slaughter .....	17
Monthly Live Imports of Sheep into NI for Direct Slaughter .....	17
Exports .....	18
Monthly Live Exports of Cattle from NI into RoI and GB.....	18
Monthly live Exports of Sheep from NI into RoI and GB .....	18

Cattle Prices

Average NI Clean Cattle Price

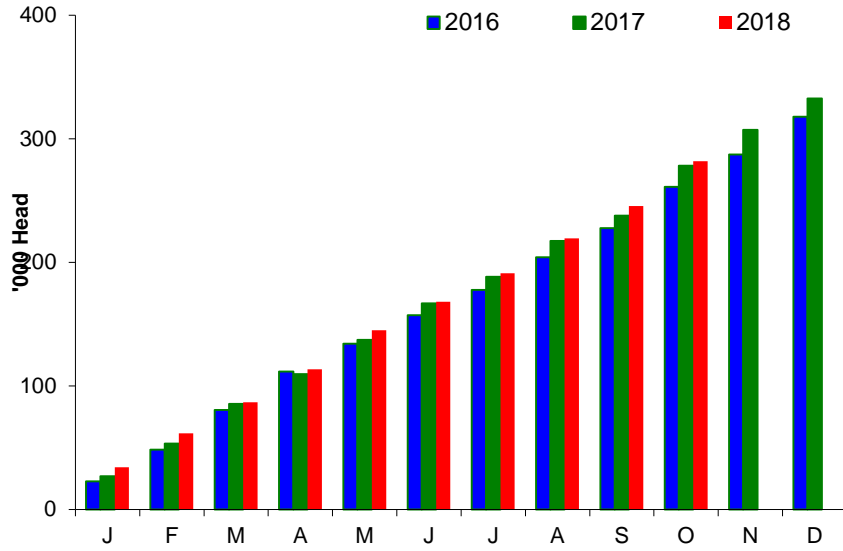


Average NI Cow Price

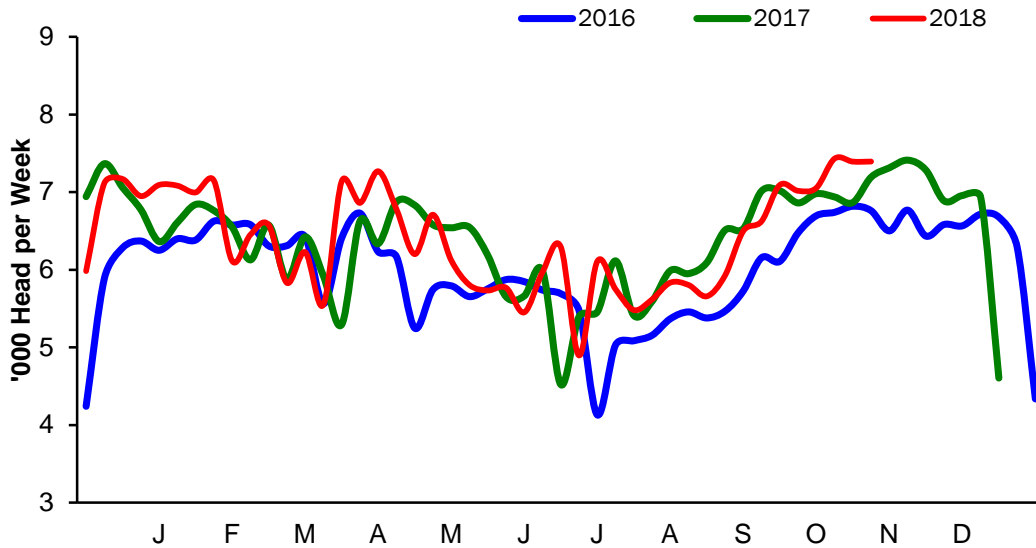


### Cattle Slaughtering

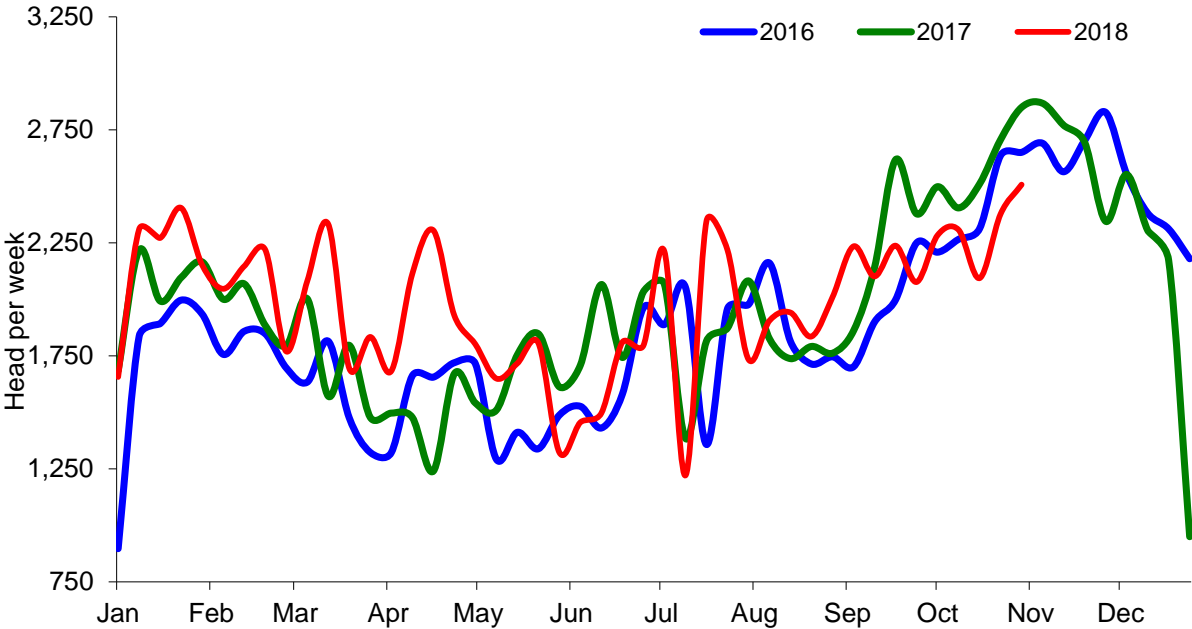
#### NI Clean Cattle Slaughtering – Cumulative



#### NI Weekly Clean Cattle Slaughtering

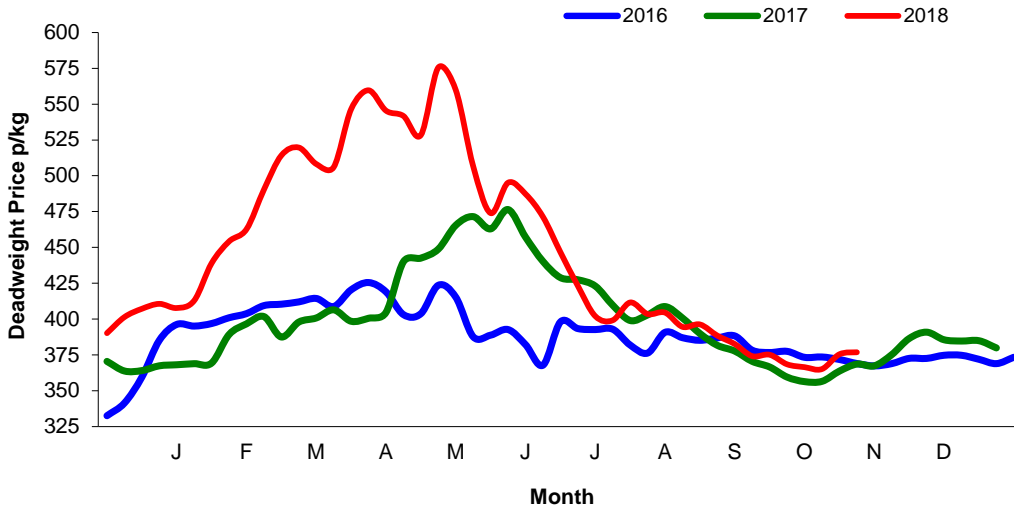


NI Weekly Cow Slaughtering



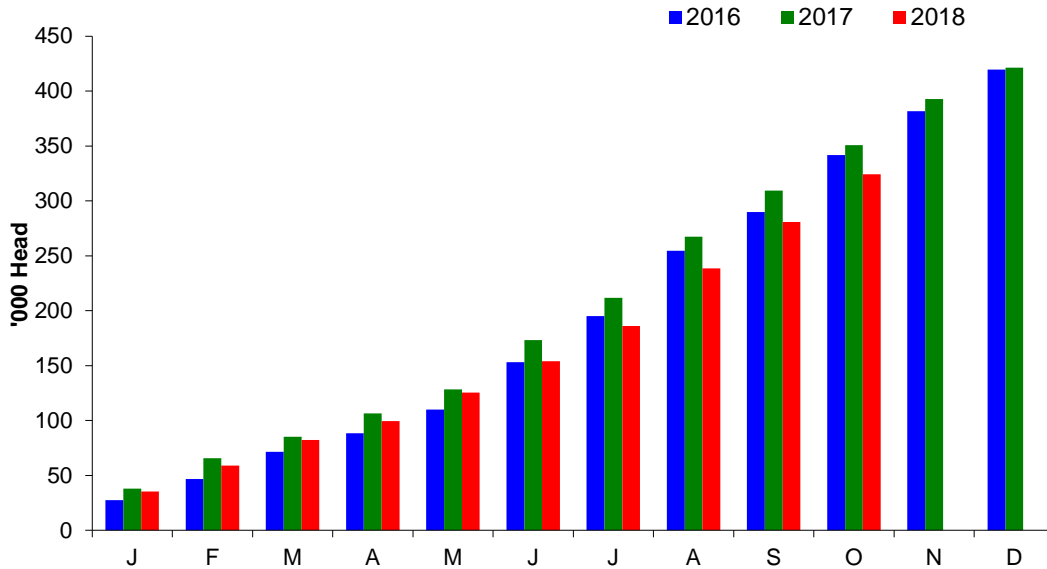
Sheep Prices

Average Deadweight NI Hogget / Lamb Price

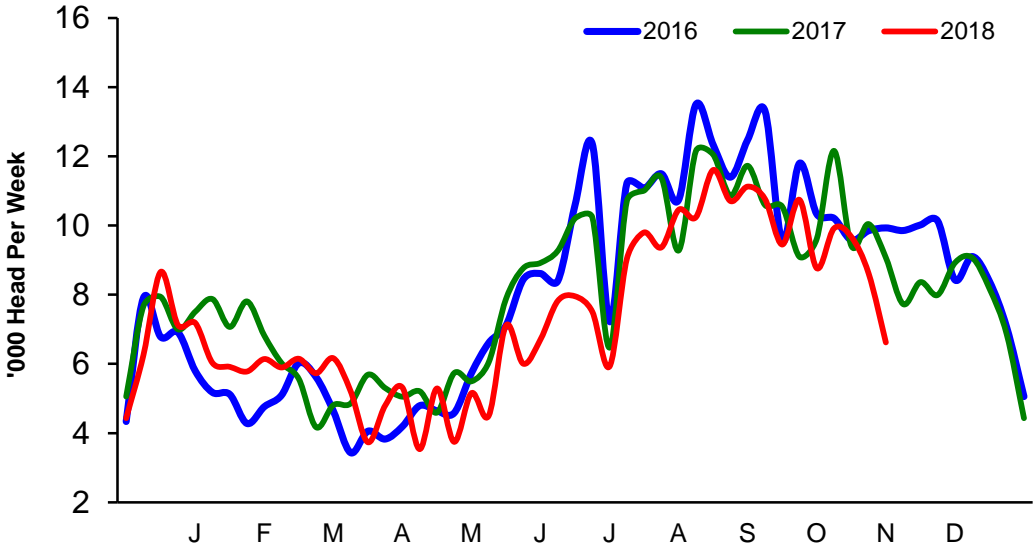


Sheep Slaughterings

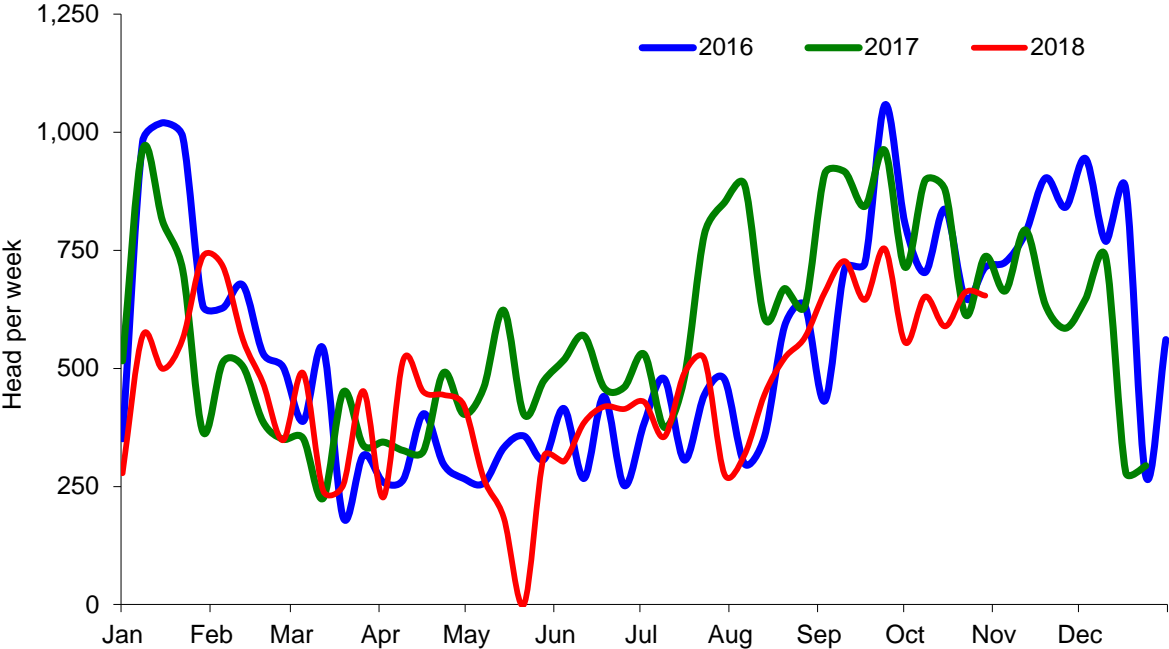
Cumulative Lamb & Hogget Slaughterings



Total Weekly Lamb & Hogget Slaughtering



Total Weekly Ewe and Ram Slaughtering



**Market Information October 2018**  
**Page 8**

<b>NI CATTLE AND SHEEP SLAUGHTERINGS FOR THE FOODCHAIN</b>						
	<b>Oct</b>			<b>Year to Date</b>		
	<b>(5 weeks ended 03/11/18)</b>			<b>(44 weeks ended 03/11/18)</b>		
	<b>Oct-17</b>	<b>Oct-18</b>	<b>% Change</b>	<b>2017</b>	<b>2018</b>	<b>Change</b>
<b>CATTLE</b>						
Steers	19,326	19,172	-1%	142,259	133,702	-6%
Heifers	12,514	13,473	+8%	104,525	109,088	+4%
Young Bulls / Calves	2,823	3,645	+29%	31,343	39,180	+25%
<b>Total Prime Cattle</b>	<b>34,663</b>	<b>36,290</b>	<b>+5%</b>	<b>278,127</b>	<b>281,970</b>	<b>+1%</b>
Calves	605	632	+4%	5,160	5,166	+0%
Cows	12,972	11,572	-11%	84,777	87,465	+3%
Mature Bulls	368	522	+42%	3,159	3,877	+23%
<b>Total Cattle</b>	<b>48,608</b>	<b>49,016</b>	<b>+1%</b>	<b>371,223</b>	<b>378,478</b>	<b>+2%</b>
<b>SHEEP</b>						
Lambs & Hoggets	50,312	43,199	-14%	361,703	328,822	-9%
Ewes & Rams	3,840	3,111	-19%	25,623	20,341	-21%
<b>Total Sheep</b>	<b>54,152</b>	<b>46,310</b>	<b>-14%</b>	<b>387,326</b>	<b>349,163</b>	<b>-10%</b>
The above figures are provisional; any amendments will be incorporated in the cumulative data (source DAERA).						

<b>NI BEEF AND SHEEPMEAT PRODUCTION - FOODCHAIN</b>						
	<b>October</b>			<b>Year to Date</b>		
	<b>(5 weeks ended 03/11/18)</b>			<b>(44 weeks ended 03/11/18)</b>		
	<b>Oct-17</b>	<b>Oct-18</b>	<b>% Change</b>	<b>2017</b>	<b>2018</b>	<b>Change</b>
<b>BEEF</b>						
Steers	6,761	6,851	+1%	49,599	47,073	-5%
Heifers	3,962	4,290	+8%	32,840	34,435	+5%
Young Bulls	934	1,246	+33%	10,367	13,210	+27%
<b>Total Prime Beef</b>	<b>11,658</b>	<b>12,386</b>	<b>+6%</b>	<b>92,807</b>	<b>94,718</b>	<b>+2%</b>
Calves	117	120	+2%	984	995	+1%
Cows	3,799	3,453	-9%	25,245	26,241	+4%
Mature Bulls	168	227	+35%	1,430	1,650	+15%
<b>Total Beef</b>	<b>15,743</b>	<b>16,187</b>	<b>+3%</b>	<b>120,466</b>	<b>123,605</b>	<b>+3%</b>
<b>SHEEPMEAT</b>						
Lambs & Hoggets	1,062	945	-11%	7,787	7,019	-10%
Ewes & Rams	101	84	-17%	717	559	-22%
<b>Total Sheepmeat</b>	<b>1,163</b>	<b>1,029</b>	<b>-11%</b>	<b>8,504</b>	<b>7,578</b>	<b>-11%</b>
The above figures are provisional; any amendments will be incorporated in the cumulative data (source DAERA).						



**Market Information October 2018**  
**Page 9**

**Total Carcase Weight Produced for the Food Chain**  
**Year-to-Date (tonnes – t.)**

Month	Prime Cattle		Cows & Bulls		Lambs/Hoggets		Ewes & Rams	
	2017	2018	2017	2018	2017	2018	2017	2018
January	11,268	11,543	3,207	2,560	852	764	92	73
February	8,821	9,194	2,465	2,484	623	515	50	53
March	8,345	8,351	2,131	2,473	449	510	39	40
April	8,019	8,922	1,850	2,510	475	387	45	47
May	11,014	10,581	2,670	2,665	642	540	70	35
June	8,027	7,694	2,424	2,174	776	595	60	43
July	7,106	7,753	2,274	2,647	797	674	61	52
August	9,732	9,473	2,912	3,001	1,198	1,104	103	59
September	8,817	8,820	2,772	2,762	913	889	97	75
October	11,658	12,386	3,968	3,681	1,062	945	101	84
November								
December								
<b>Total</b>	<b>92,807</b>	<b>94,718</b>	<b>26,673</b>	<b>27,891</b>	<b>7,787</b>	<b>7,019</b>	<b>717</b>	<b>560</b>
<b>Change (t.)</b>	<b>1,911</b>		<b>996</b>		<b>-768</b>		<b>-157</b>	
<b>% Change</b>	<b>2.06%</b>		<b>3.95%</b>		<b>-9.86%</b>		<b>-21.89%</b>	

*\*excludes calves*

**Change in Throughput / Production**

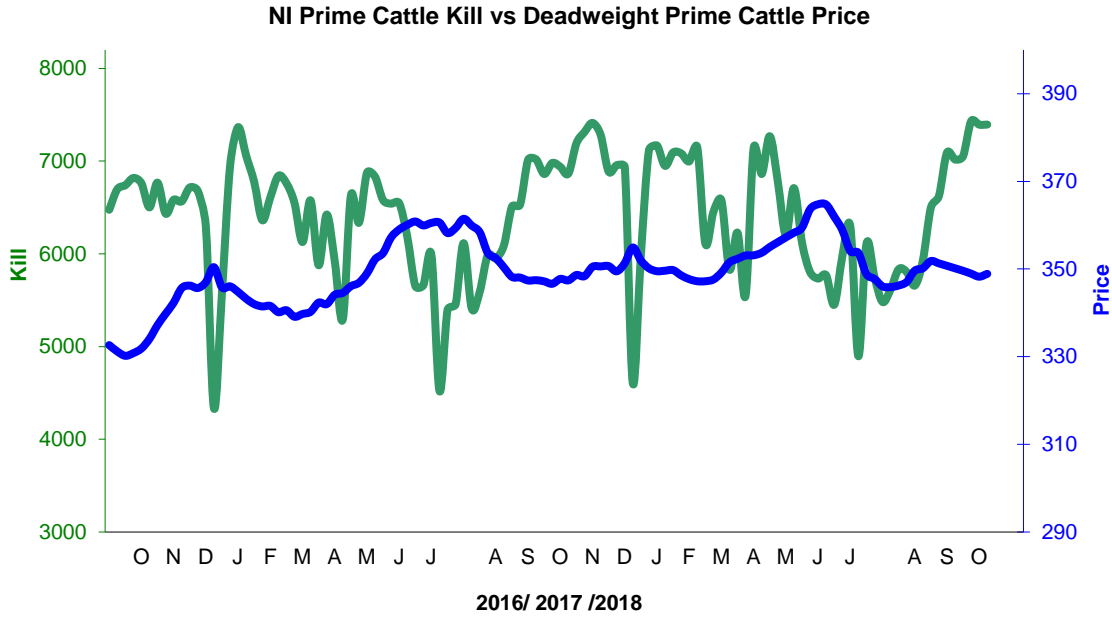
**Last 5 weeks 2017/2018**

**Change in Throughput / Production 2017/2018**

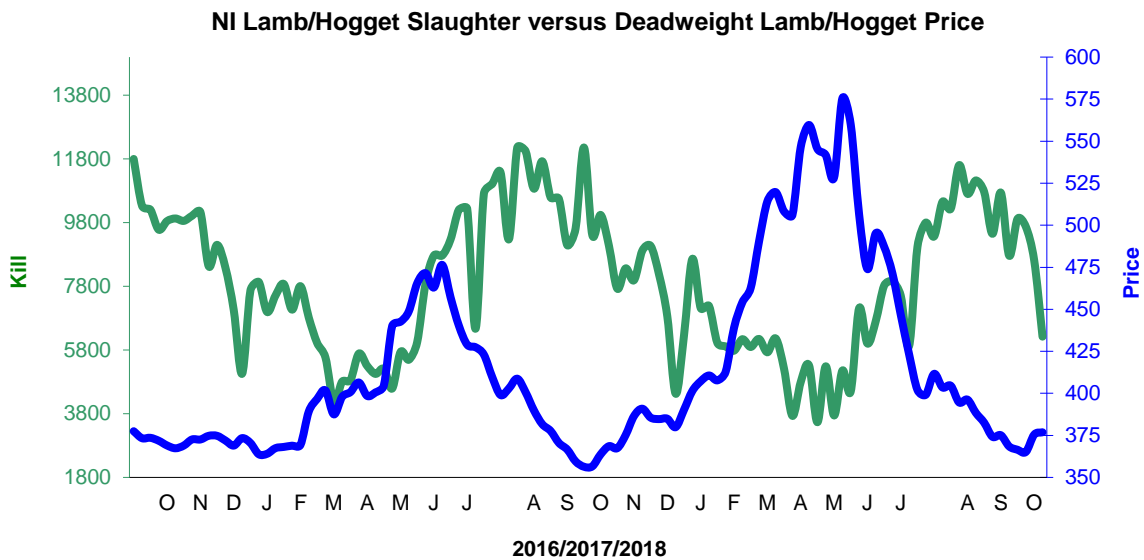
2017/2018	October		
	Number	Tonnage	ACW Kg
Prime	4.7%	6.3%	4.80
Cows	-10.8%	-9.1%	5.69
<b>Total</b>	<b>0.8%</b>	<b>2.8%</b>	<b>6.49</b>
Lamb	-14.1%	-11.0%	0.79
Ewes and Rams	-19.0%	-16.5%	0.84
<b>Total Sheep</b>	<b>-14.5%</b>	<b>-11.5%</b>	<b>0.78</b>

**Supply and Price**

**NI Clean Cattle Kill vs. Average Clean Cattle Price**



**NI Lamb/Hogget Kill vs. Average Lamb / Hogget Price**

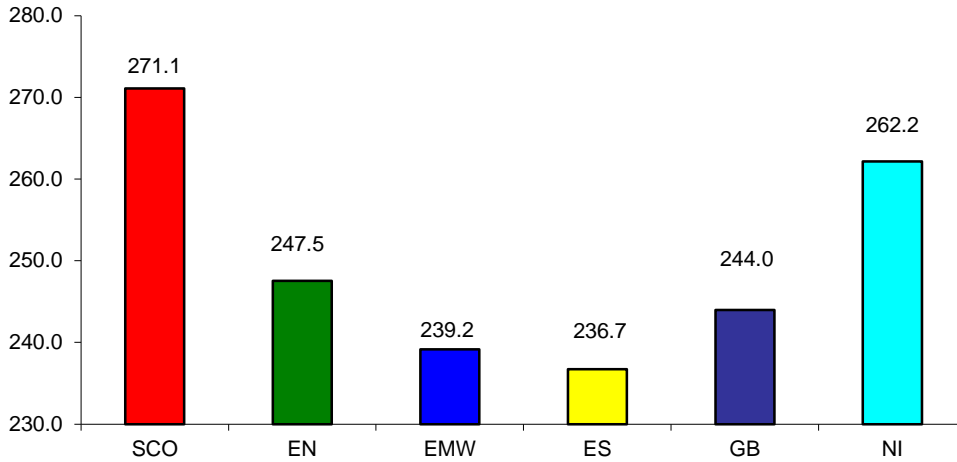


Green	Supply (Kill)
Blue	Price

**BRITISH ISLES COMPARISONS**

**UK Average Cow Prices**

**52 Weeks to 3 November 2018**

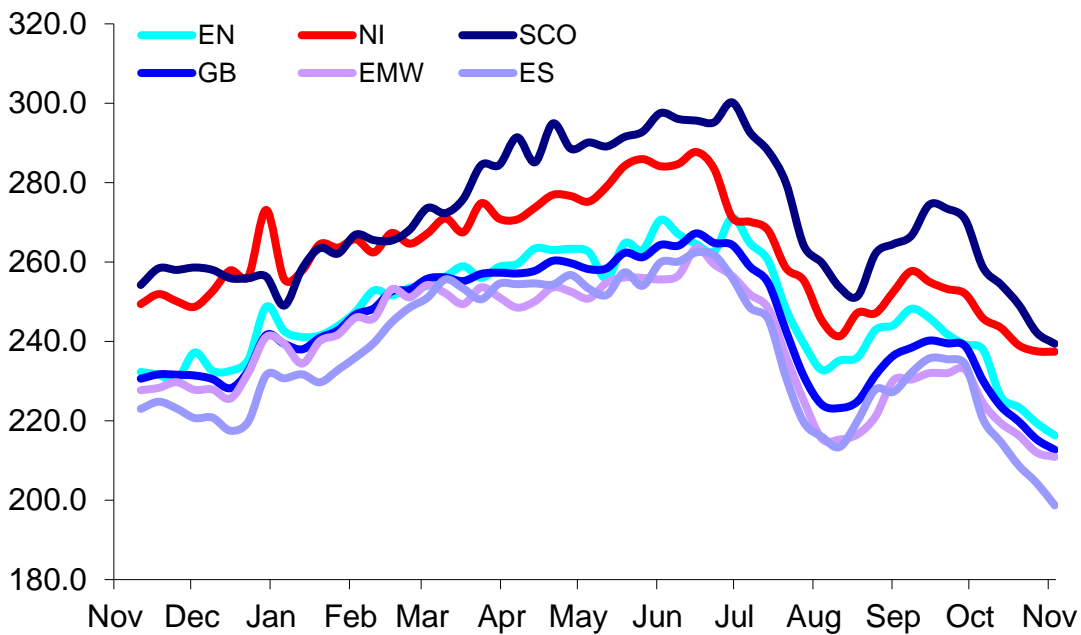


SCO	Scotland
EN	England North
EMW	England Midlands and Wales
ES	England South
NI	Northern Ireland
GB	Great Britain

Prices relate to UK Dressing Specification

**Weekly UK Cow Prices**

**52 Weeks to 3 November 2018**

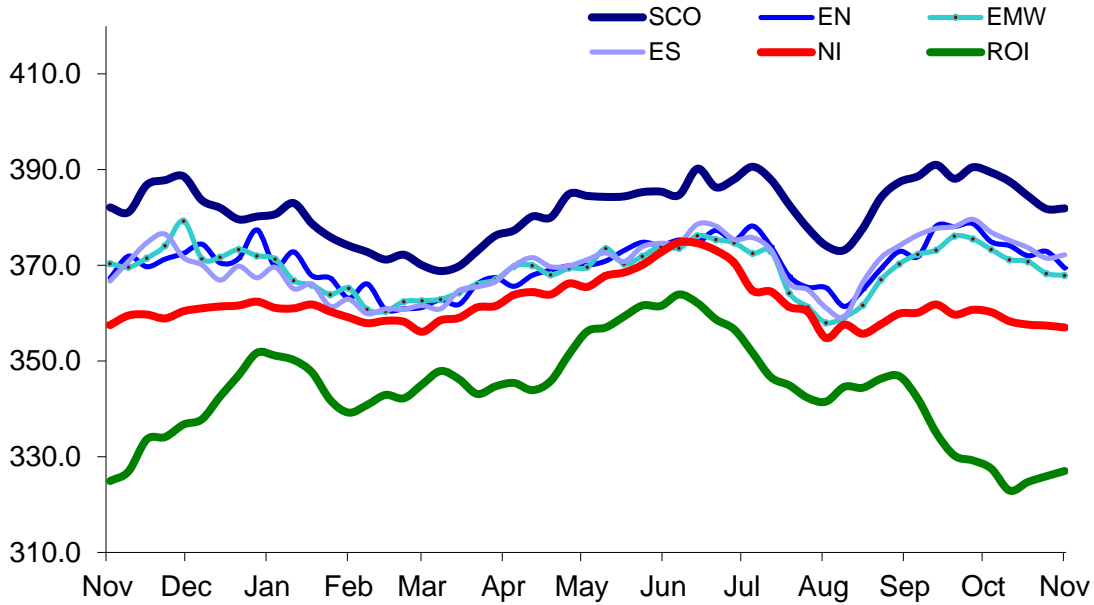


**Market Information October 2018**  
**Page 12**

Prices relate to UK Dressing Specification

**British Isles R3 Steer Price**

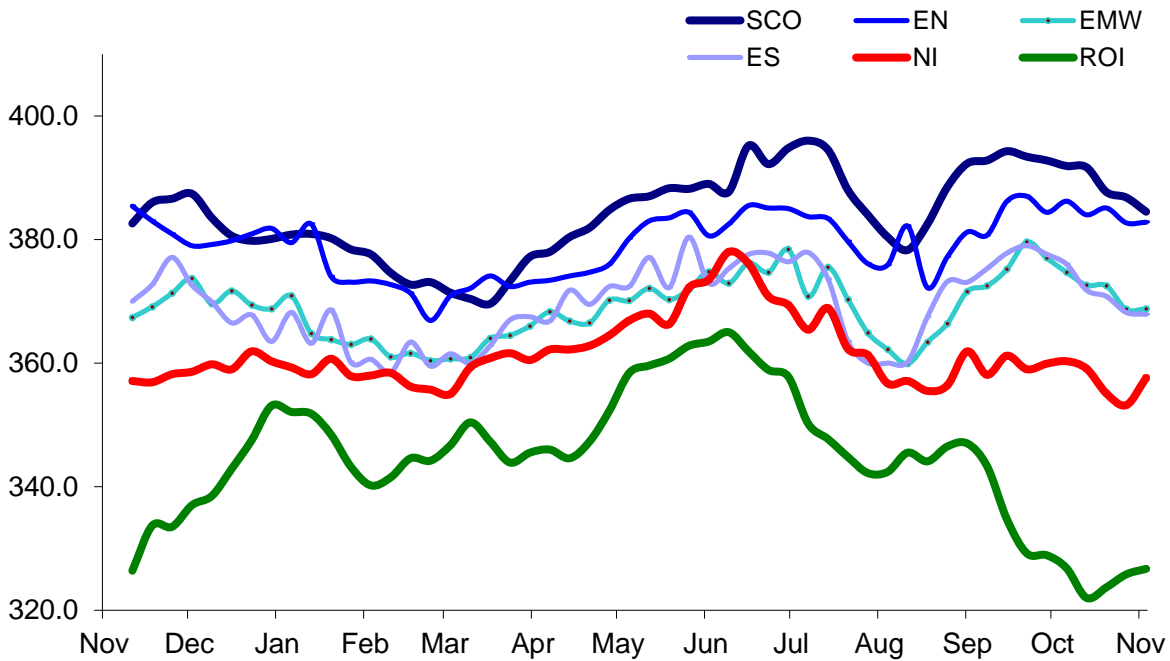
**52 Weeks to 3 November 2018**



Prices relate to UK Dressing Specification

**British Isles R4 Steer Price**

**52 Weeks to 3 November 2018**

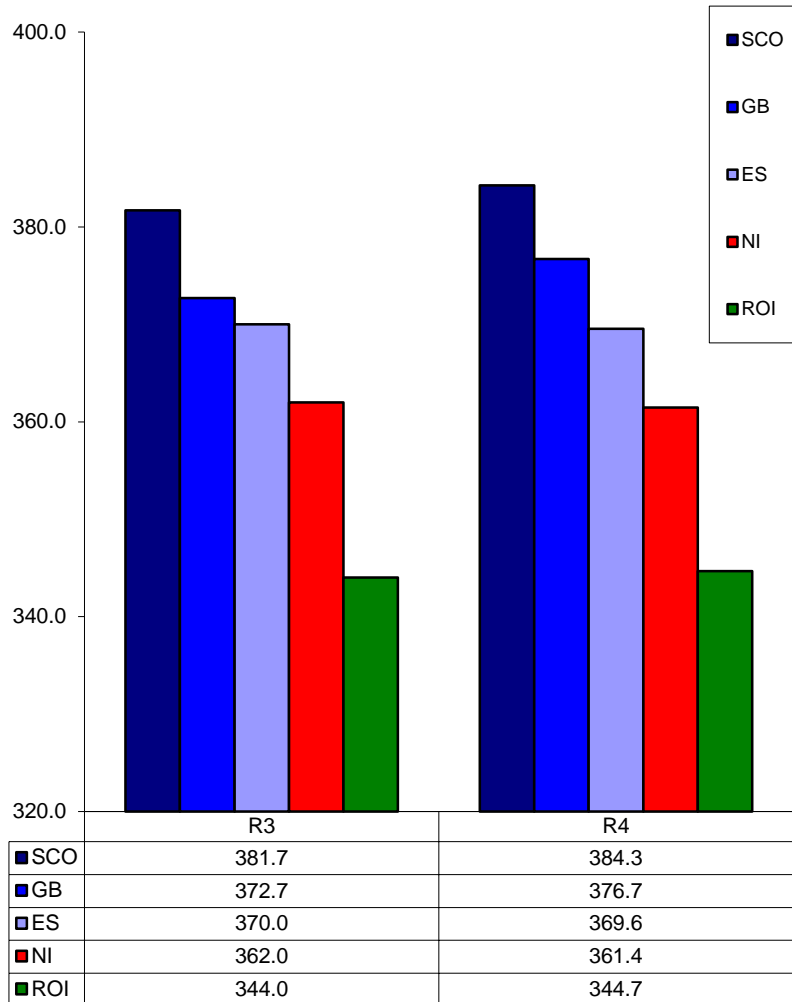


**Market Information October 2018**  
**Page 13**

Prices relate to UK Dressing Specification

**British Isles Average R3 and R4 Steer price**

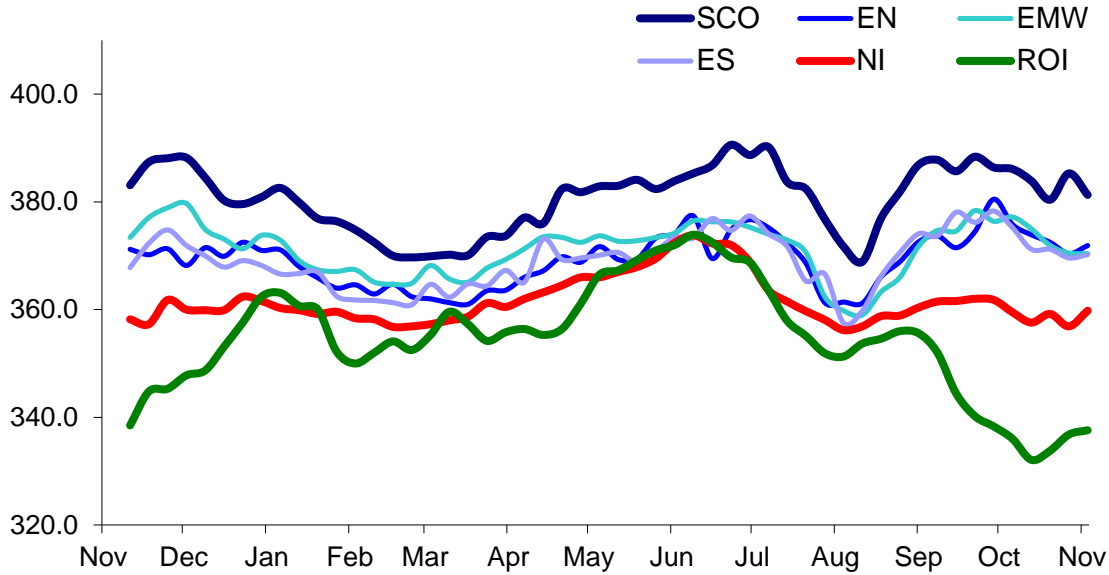
**52 Weeks to 3 November 2018**



Prices relate to UK Dressing Specification

British Isles R3 Heifer Price

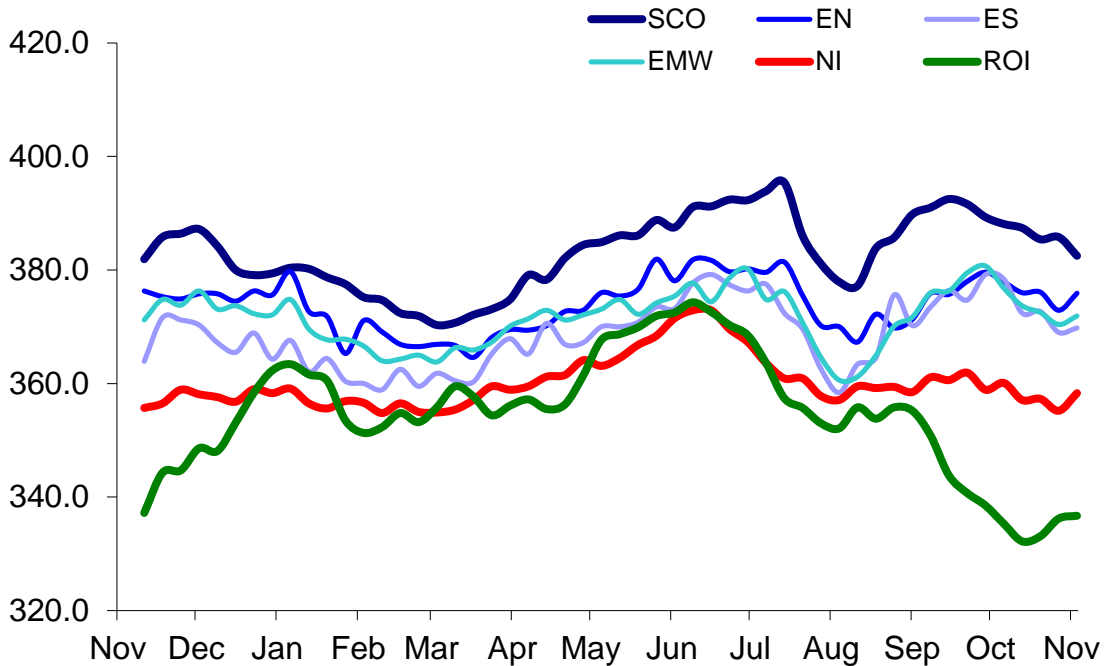
52 Weeks to 3 November 2018



Prices relate to UK Dressing Specification

British Isles R4 Heifer Price

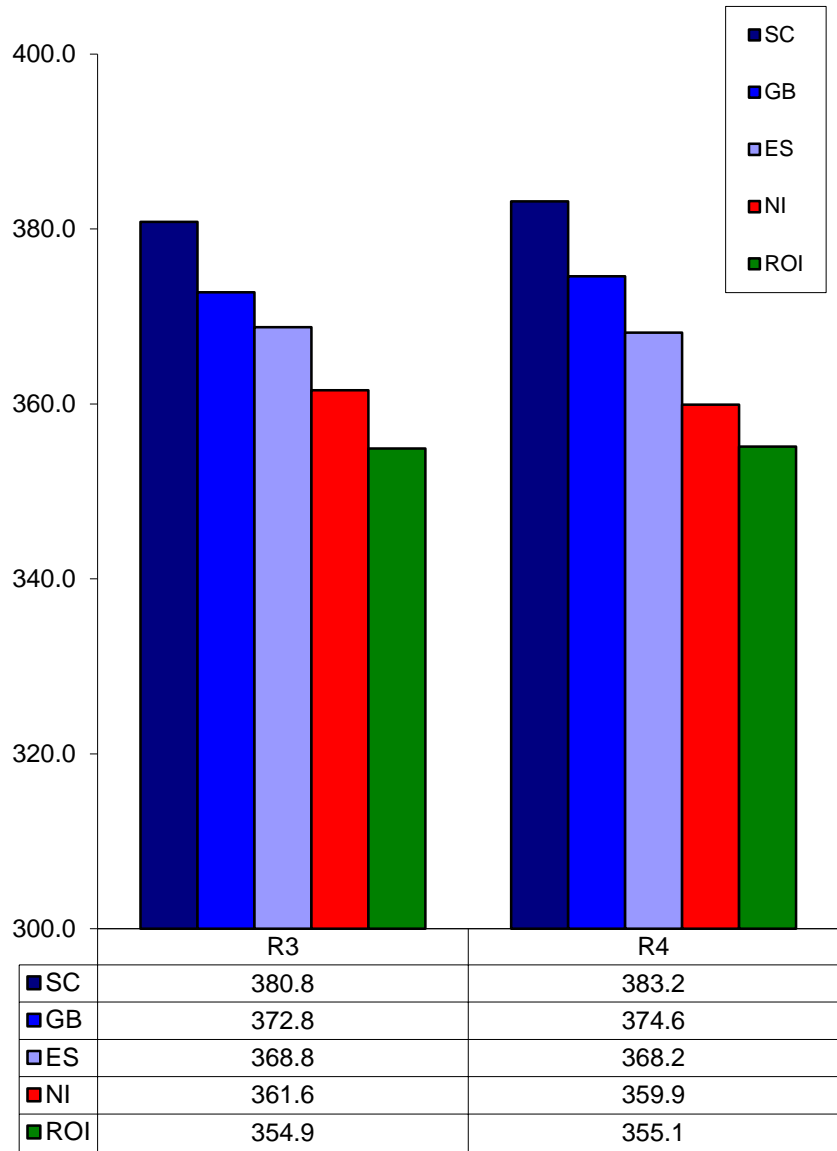
52 Weeks to 3 November 2018



Prices relate to UK Dressing Specification

**British Isles Average R3 and R4 Heifer price**

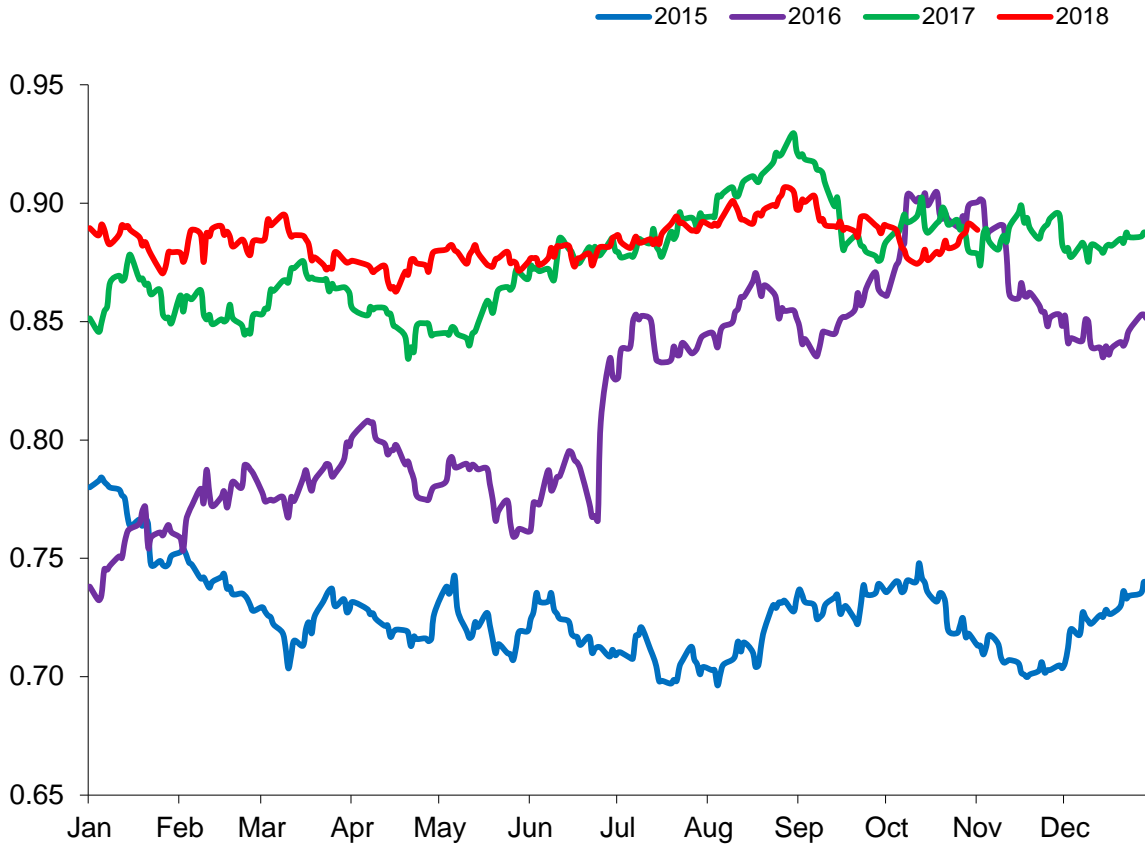
**52 Weeks to 3 November 2018**



Prices relate to UK Dressing Specification

Exchange Rate £ / Euro

01 January 2015 –31 October 2018

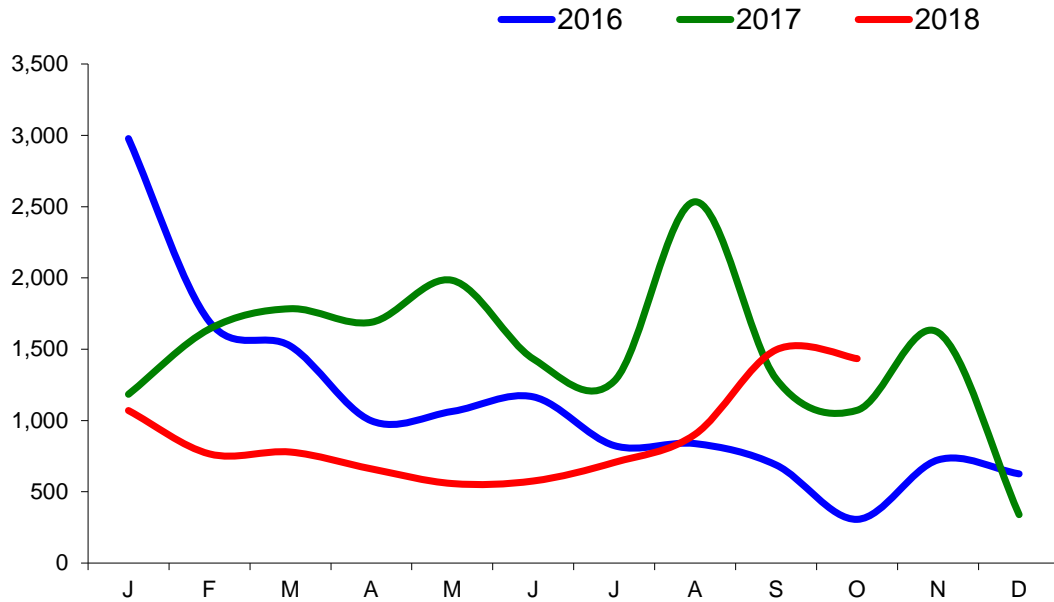




Imports

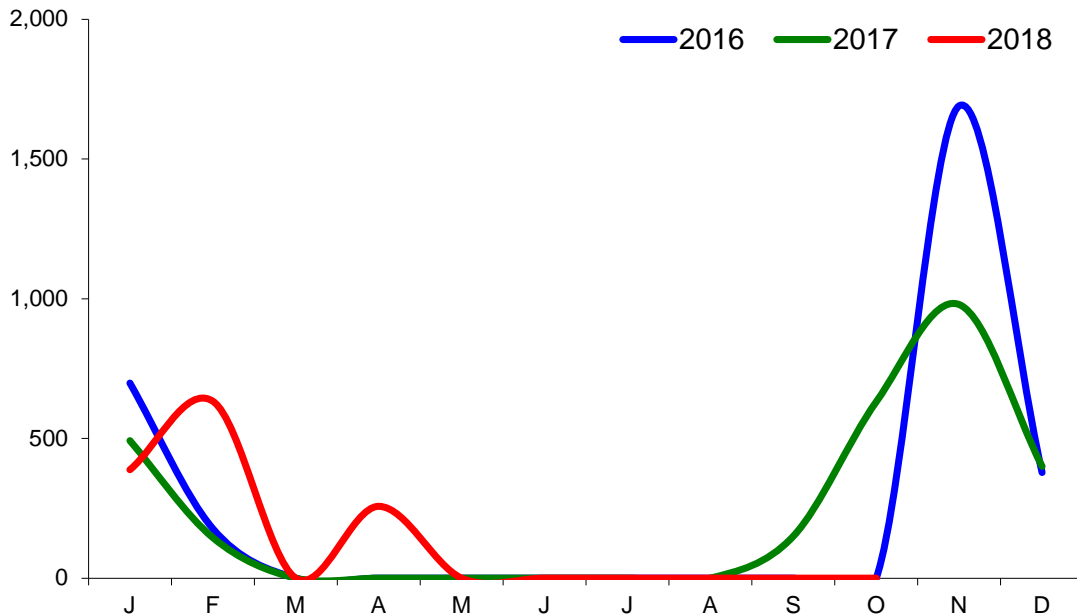
Monthly Live Imports of Cattle into NI for Direct Slaughter

From ROI and GB Combined



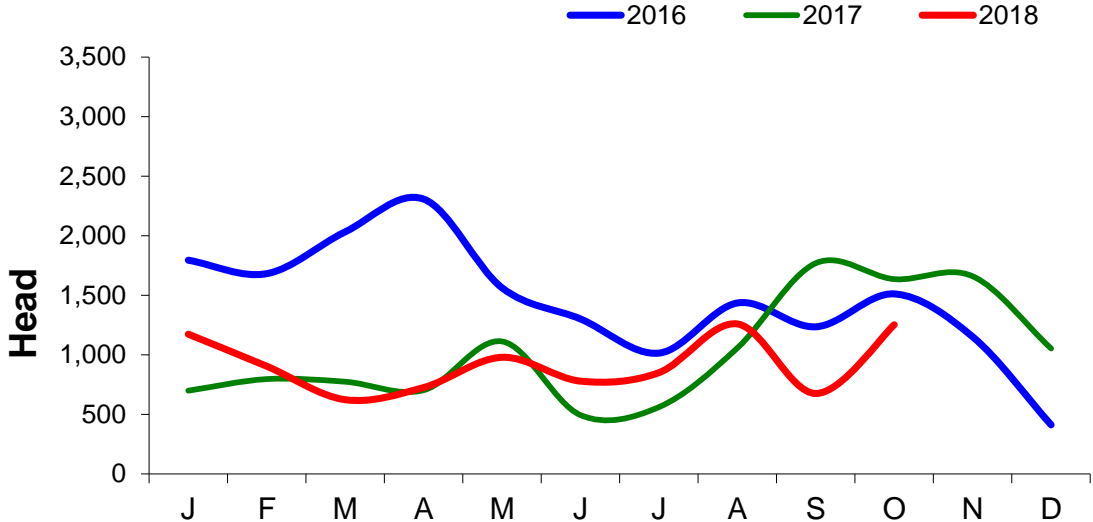
Monthly Live Imports of Sheep into NI for Direct Slaughter

From ROI and GB Combined



Exports

Monthly Live Exports of Cattle from NI into ROI and GB



Monthly Live Exports of Sheep from NI into ROI and GB

