



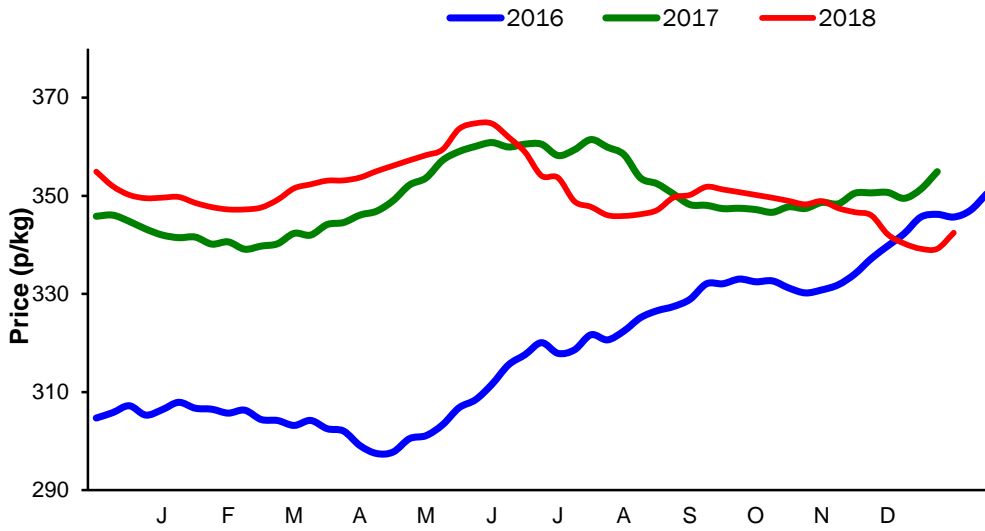
**Monthly Economic Review
December 2018**

Contents

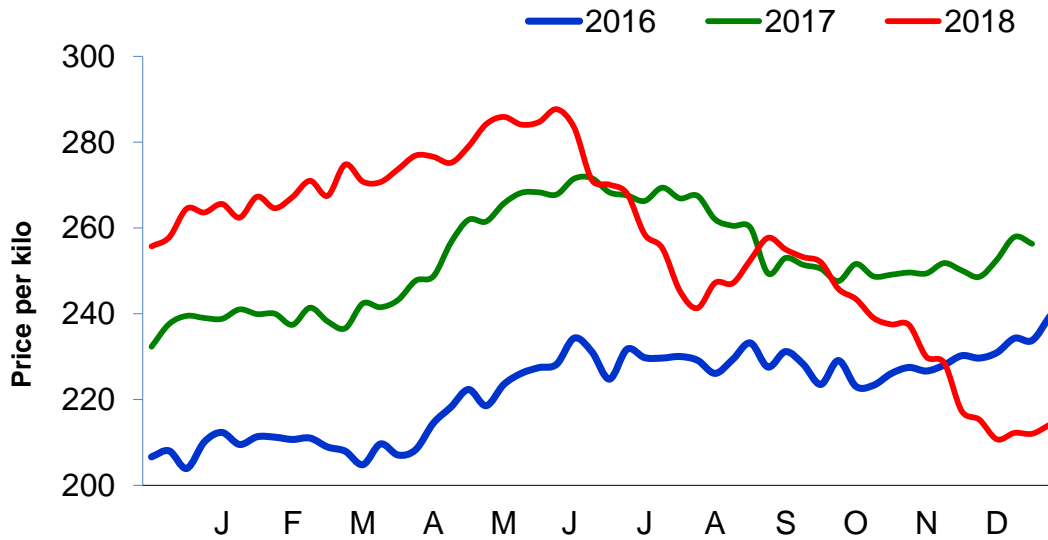
Contents.....	2
Cattle Prices	3
Average NI Clean Cattle Price	3
Average NI Cow Price.....	3
Cattle Slaughtering.....	4
NI Clean Cattle Slaughtering – Cumulative	4
NI Weekly Clean Cattle Slaughtering.....	4
NI Weekly Cow Slaughtering	5
Sheep Prices.....	6
Average NI Lamb / Hogget Price	6
Sheep Slaughtering.....	7
Cumulative Lamb & Hogget Slaughtering	7
Total Weekly Lamb & Hogget Slaughtering	7
Total Weekly Ewe and Ram Slaughtering.....	7
Total Carcase Weight Produced for the Food Chain.....	8
Change in Throughput / Production	9
Supply and Price.....	10
NI Lamb/Hogget Kill vs. Average Lamb / Hogget Price	10
NI Clean Cattle Kill vs. Average Clean Cattle Price.....	10
British Isles Price Comparisons	11
UK Average Cow Prices	11
Weekly UK Cow Prices	11
British Isles R3 Steer Price	12
British Isles R4 Steer Price	12
British Isles Average R3 and R4 Steer price	13
British Isles R3 Heifer Price	14
British Isles R4 Heifer Price	14
British Isles Average R3 and R4 Heifer price.....	15
Exchange Rate £ / Euro	16
Imports.....	17
Monthly Live Imports of Cattle into NI for Direct Slaughter	17
Monthly Live Imports of Sheep into NI for Direct Slaughter	17
Exports	18
Monthly Live Exports of Cattle from NI into RoI and GB.....	18
Monthly live Exports of Sheep from NI into RoI and GB	18

Cattle Prices

Average NI Clean Cattle Price

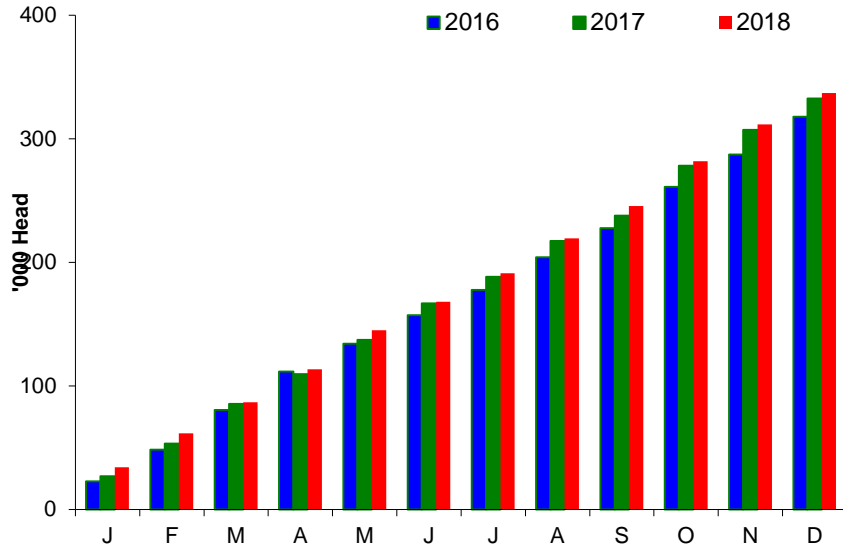


Average NI Cow Price

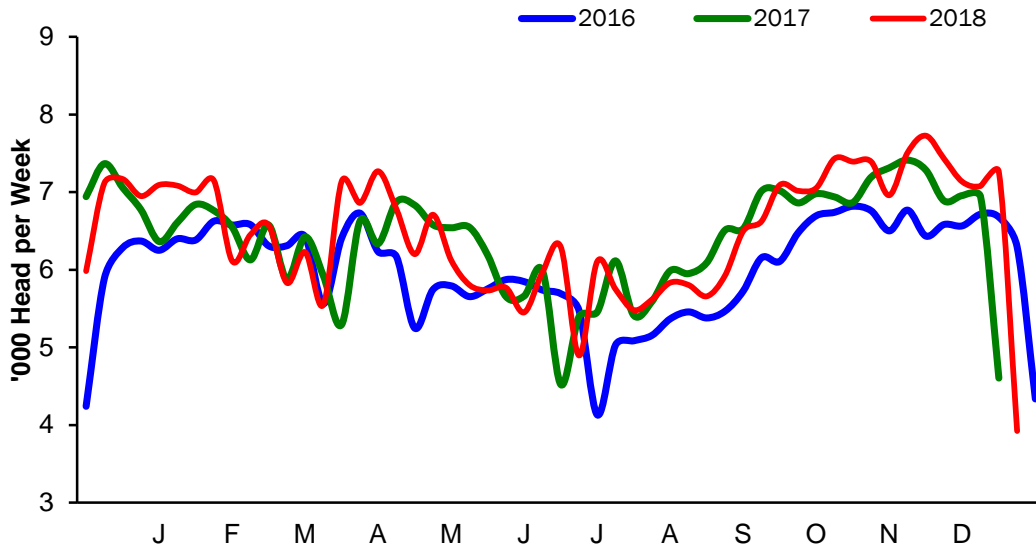


Cattle Slaughtering

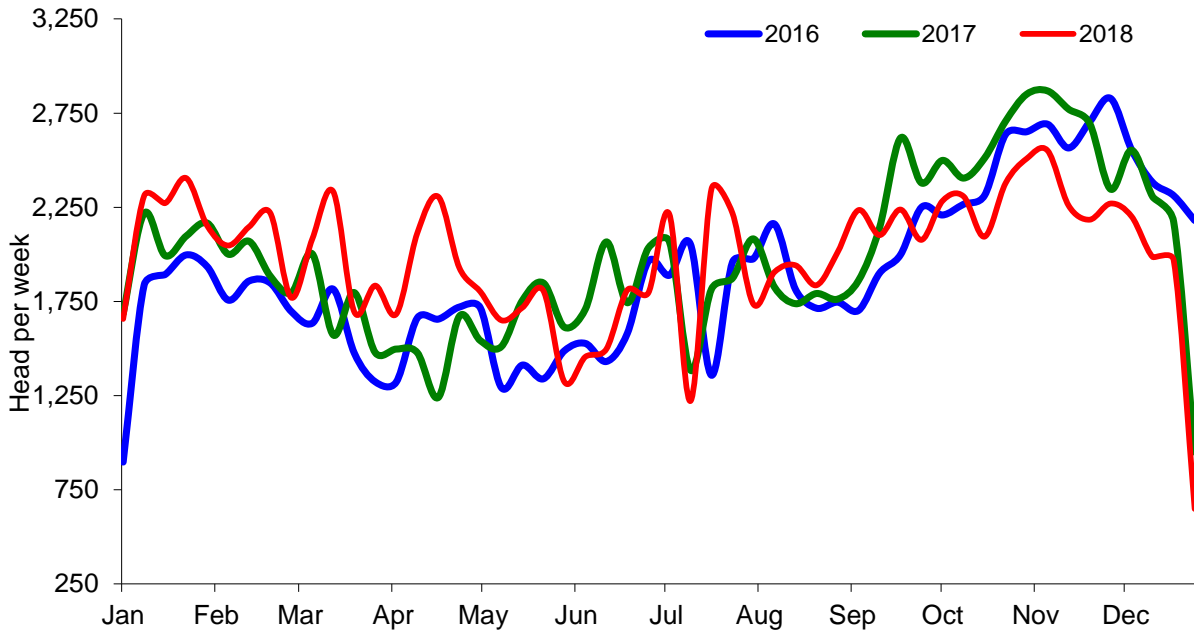
NI Clean Cattle Slaughtering – Cumulative



NI Weekly Clean Cattle Slaughtering

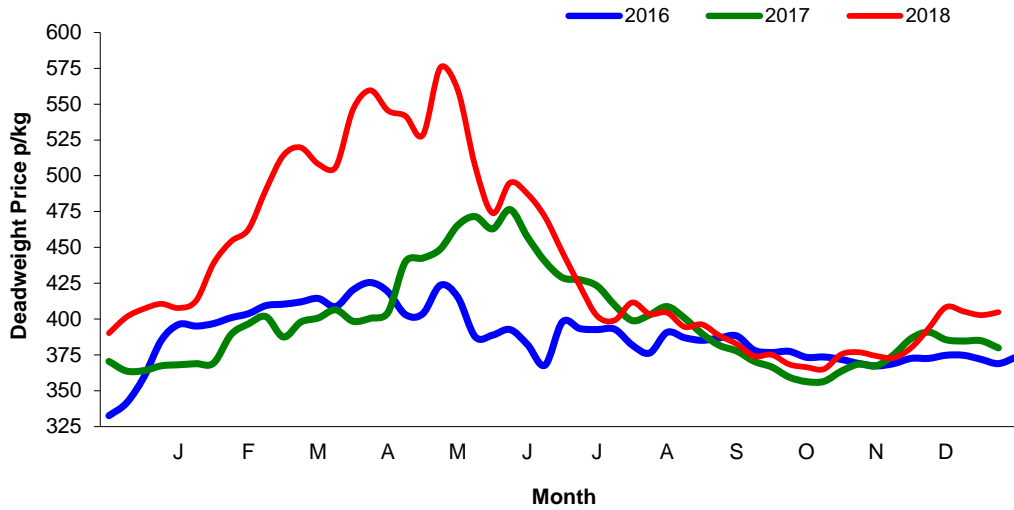


NI Weekly Cow Slaughtering



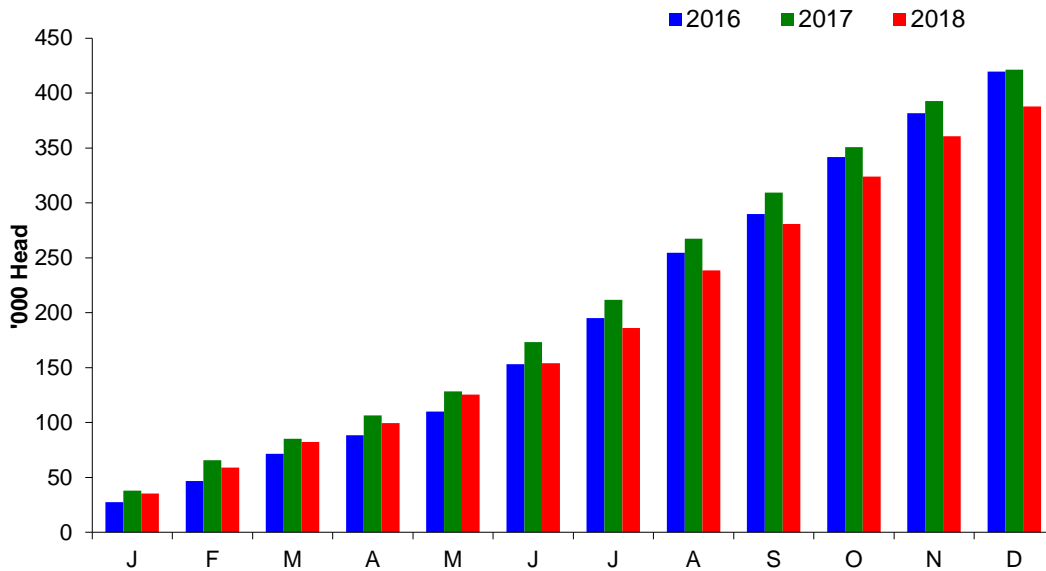
Sheep Prices

Average Deadweight NI Hogget / Lamb Price

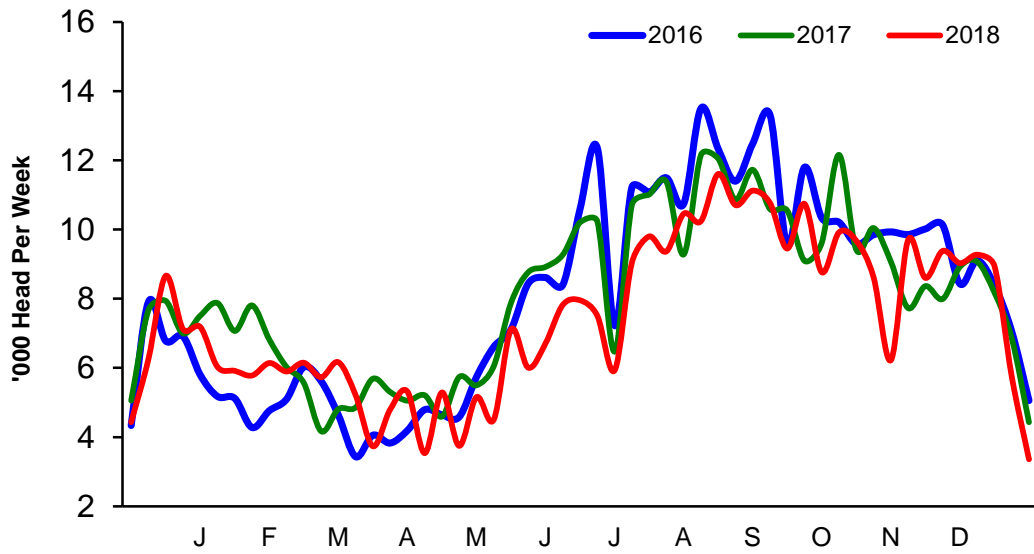


Sheep Slaughterings

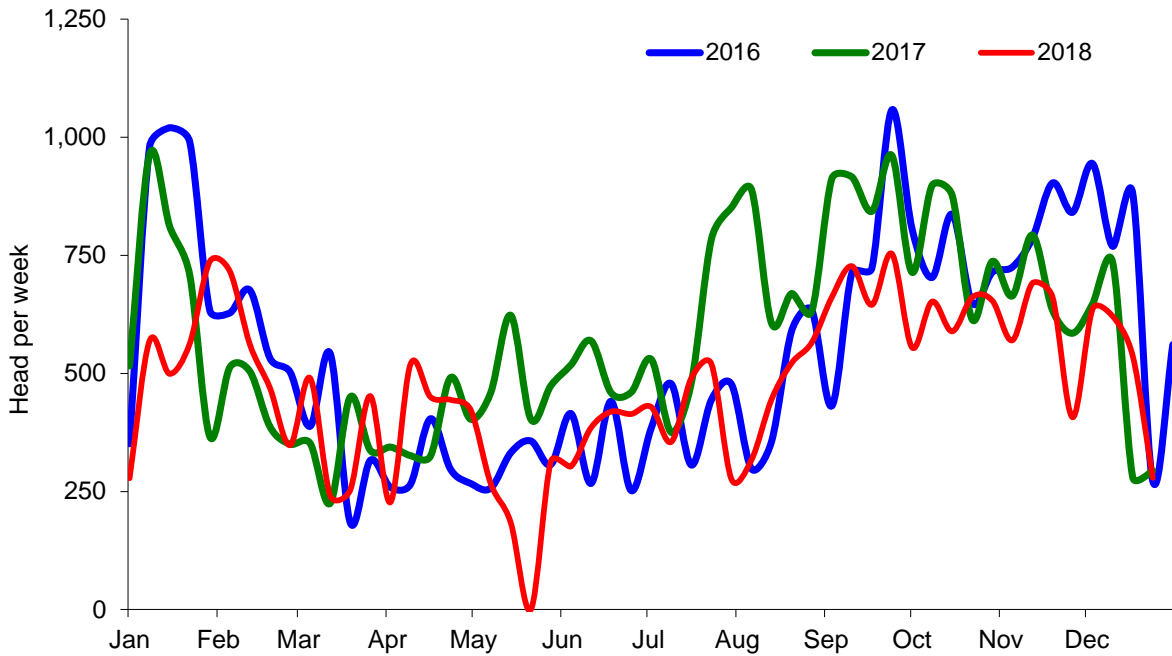
Cumulative Lamb & Hogget Slaughterings



Total Weekly Lamb & Hogget Slaughtering



Total Weekly Ewe and Ram Slaughtering



Market Information December 2018
Page 8

NI CATTLE AND SHEEP SLAUGHTERINGS FOR THE FOODCHAIN						
	Dec			Year to Date		
	(4 weeks ended 29/12/18)			(52 weeks ended 29/12/18)		
	Dec-17	Dec-18	% Change	2017	2018	Change
CATTLE						
Steers	12,831	12,332	-4%	170,480	160,732	-6%
Heifers	10,227	10,358	+1%	126,135	131,414	+4%
Young Bulls / Calves	2,328	2,706	+16%	36,100	44,845	+24%
Total Prime Cattle	25,386	25,396	+0%	332,715	336,991	+1%
Calves	517	440	-15%	6,287	6,107	-3%
Cows	7,982	6,804	-15%	103,440	103,533	+0%
Mature Bulls	205	386	+88%	3,670	4,708	+28%
Total Cattle	34,090	33,026	-3%	446,112	451,339	+1%
SHEEP						
Lambs & Hoggets	28,536	27,335	-4%	423,247	392,867	-7%
Ewes & Rams	1,956	2,073	+6%	30,255	24,744	-18%
Total Sheep	30,492	29,408	-4%	453,502	417,611	-8%
The above figures are provisional; any amendments will be incorporated in the cumulative data (source DAERA).						

NI BEEF AND SHEEPMEAT PRODUCTION - FOODCHAIN						
	December			Year to Date		
	(4 weeks ended 29/12/18)			(52 weeks ended 29/12/18)		
	Dec-17	Dec-18	% Change	2017	2018	Change
BEEF						
Steers	4,503	4,379	-3%	59,479	56,683	-5%
Heifers	3,250	3,335	+3%	39,712	41,596	+5%
Young Bulls	767	893	+16%	11,956	15,100	+26%
Total Prime Beef	8,520	8,606	+1%	111,147	113,379	+2%
Calves	98	85	-13%	1,198	1,175	-2%
Cows	2,387	2,045	-14%	30,676	31,055	+1%
Mature Bulls	95	157	+65%	1,666	1,996	+20%
Total Beef	11,100	10,893	-2%	144,688	147,606	+2%
SHEEPMEAT						
Lambs & Hoggets	620	623	+0%	9,117	8,454	-7%
Ewes & Rams	53	56	+7%	844	679	-19%
Total Sheepmeat	673	679	+1%	9,961	9,134	-8%
The above figures are provisional; any amendments will be incorporated in the cumulative data (source DAERA).						

Market Information December 2018
Page 9

Total Carcase Weight Produced for the Food Chain
Year-to-Date (tonnes – t.)

Month	Prime Cattle		Cows & Bulls		Lambs/Hoggets		Ewes & Rams	
	2017	2018	2017	2018	2017	2018	2017	2018
January	11,268	11,543	3,207	3,406	852	764	92	73
February	8,821	9,194	2,465	2,560	623	515	50	53
March	8,345	8,351	2,131	2,484	449	534	39	40
April	8,019	8,922	1,850	2,510	475	387	45	47
May	11,014	10,581	2,670	2,665	642	613	70	35
June	8,027	7,694	2,424	2,175	776	595	60	43
July	7,106	7,753	2,274	2,648	797	674	61	52
August	9,732	9,473	2,912	3,001	1,198	1,104	103	59
September	8,817	8,820	2,772	2,762	913	889	97	75
October	11,658	12,386	3,968	3,681	1,062	945	101	84
November	9,821	10,054	3,185	2,959	710	813	74	64
December	8,520	8,606	2,482	2,201	620	623	53	56
Total	111,148	113,378	32,340	33,052	9,117	8,455	844	680
Change (t.)	2,230		711		-662		-164	
% Change	2.01%		2.20%		-7.26%		-19.42%	

**excludes calves*

Change in Throughput / Production

Last 4 weeks 2017/2018

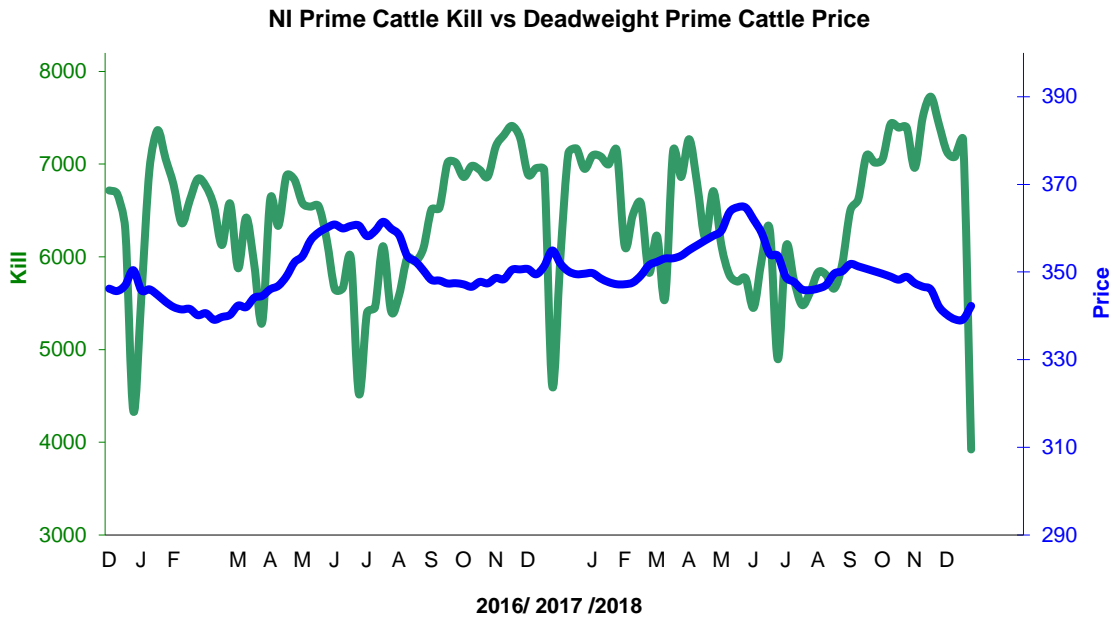
Change in Throughput / Production 2017/2018

December

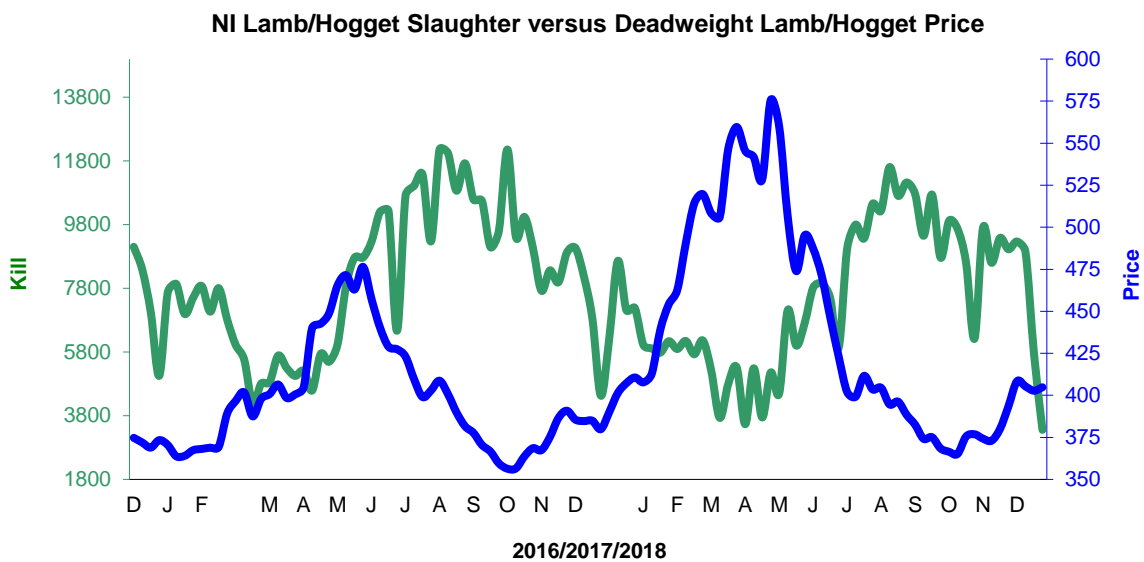
2017/2018	Number	Tonnage	ACW Kg
Prime	0.0%	1.0%	3.09
Cows	-14.8%	-14.3%	-0.21
Total	-3.1%	-1.9%	4.42
Lamb	-4.2%	0.4%	1.04
Ewes and Rams	6.0%	7.1%	-0.36
Total Sheep	-3.6%	1.0%	1.01

Supply and Price

NI Clean Cattle Kill vs. Average Clean Cattle Price



NI Lamb/Hogget Kill vs. Average Lamb / Hogget Price

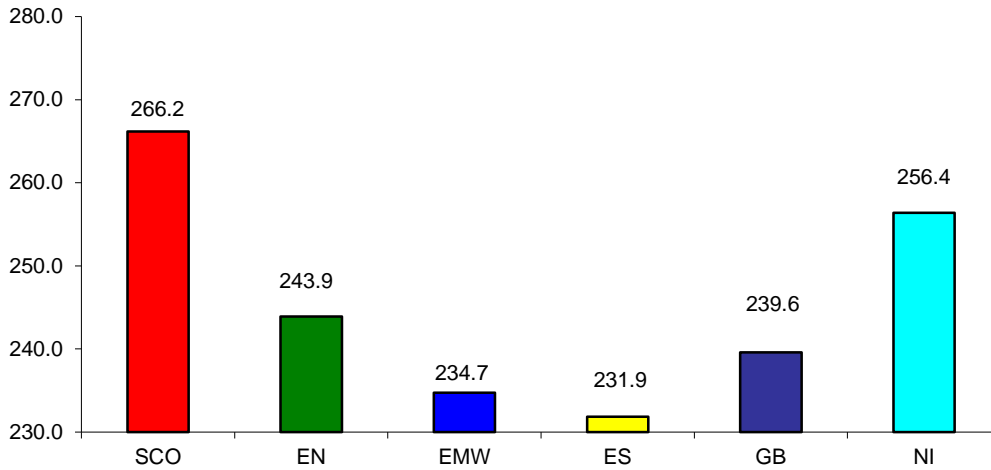


Green	Supply (Kill)
Blue	Price

BRITISH ISLES COMPARISONS

UK Average Cow Prices

52 Weeks to 29 December 2018

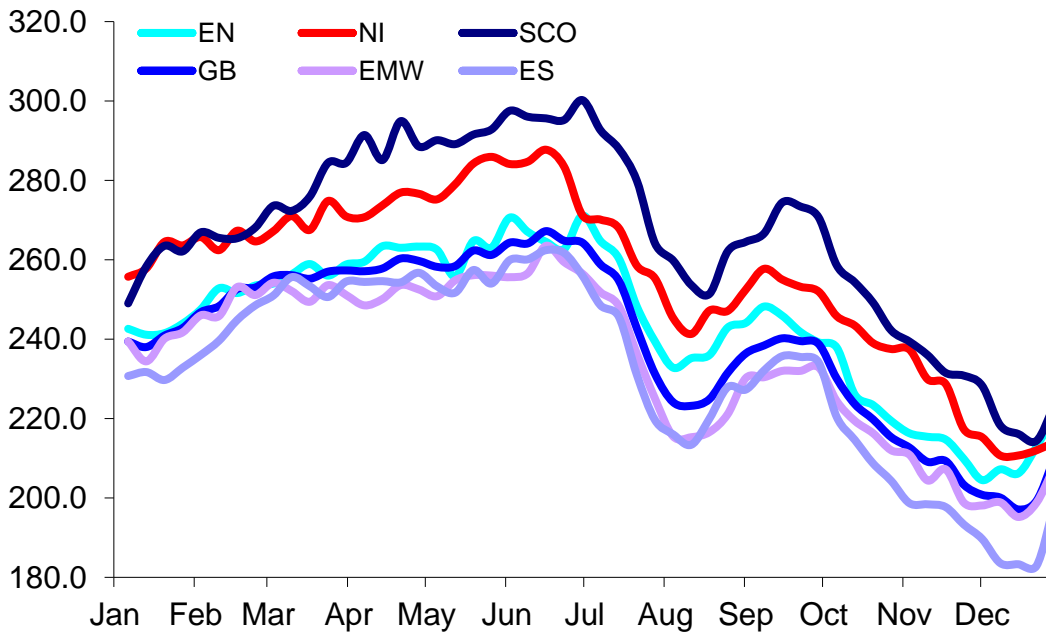


SCO	Scotland
EN	England North
EMW	England Midlands and Wales
ES	England South
NI	Northern Ireland
GB	Great Britain

Prices relate to UK Dressing Specification

Weekly UK Cow Prices

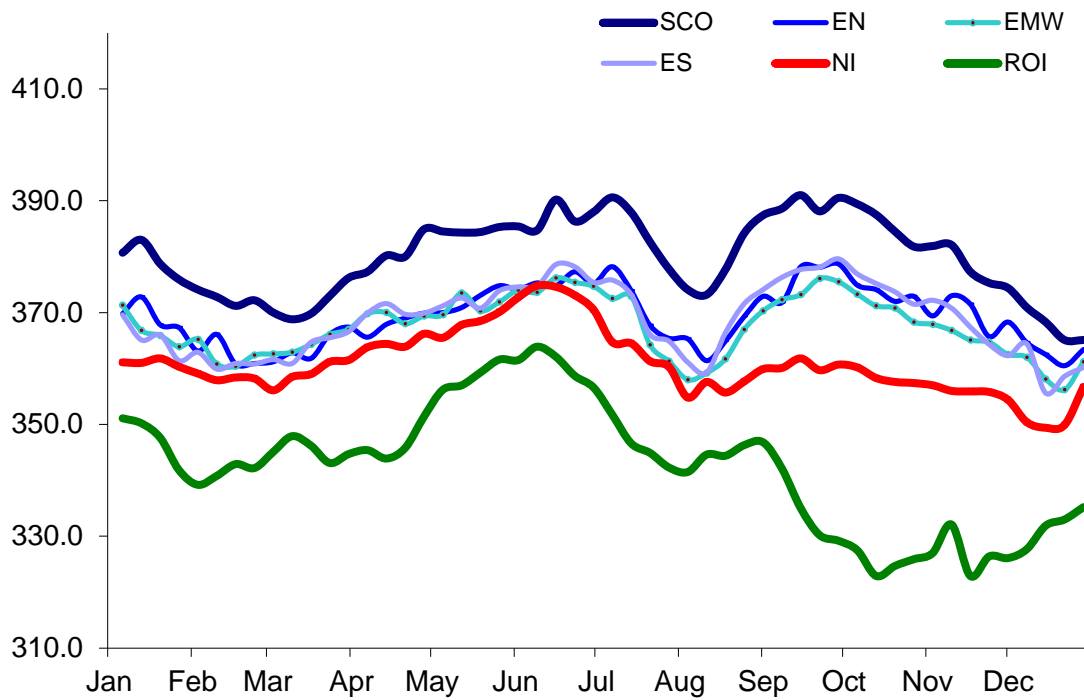
52 Weeks to 29 December 2018



Prices relate to UK Dressing Specification

British Isles R3 Steer Price

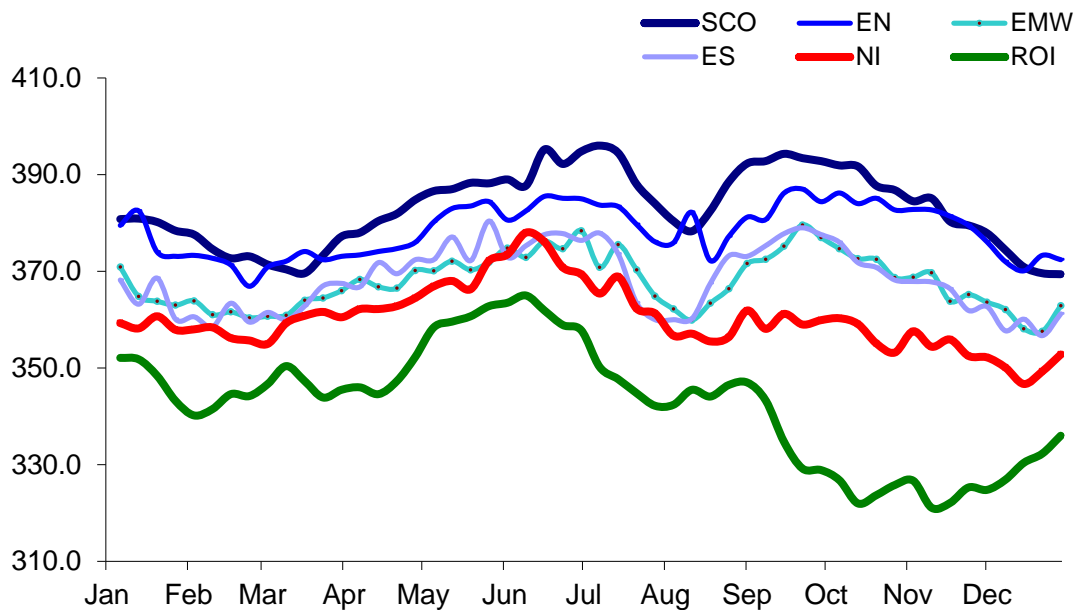
52 Weeks to 29 December 2018



Prices relate to UK Dressing Specification

British Isles R4 Steer Price

52 Weeks to 29 December 2018

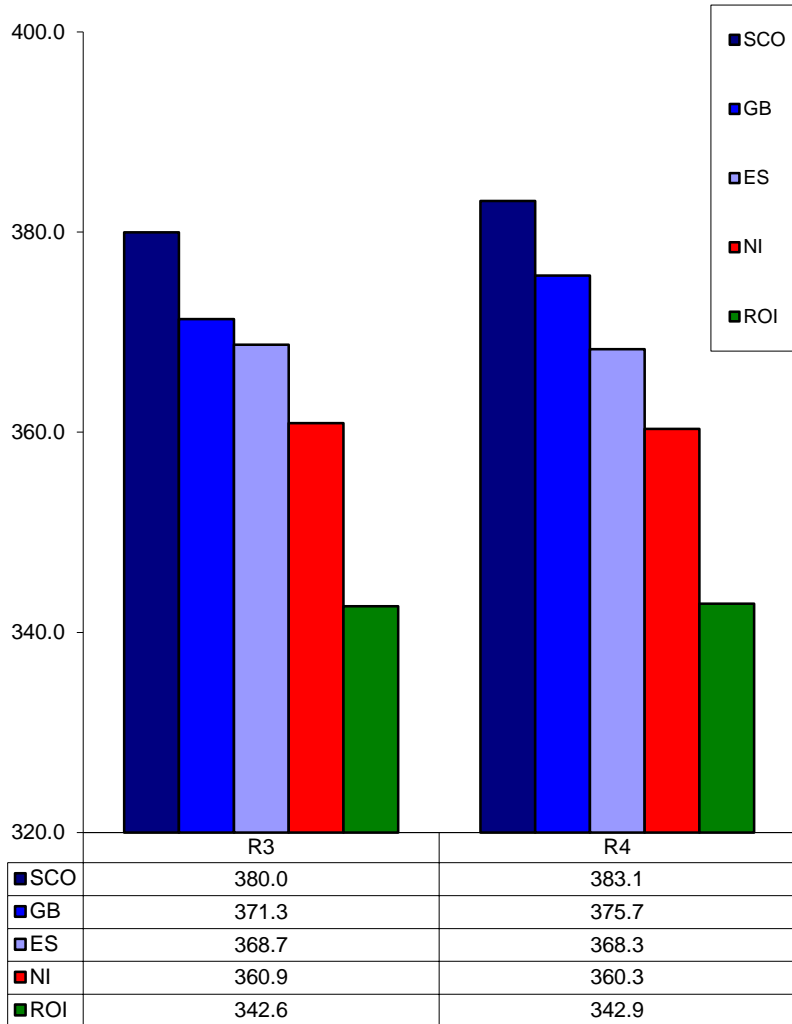


Market Information December 2018
Page 13

Prices relate to UK Dressing Specification

British Isles Average R3 and R4 Steer price

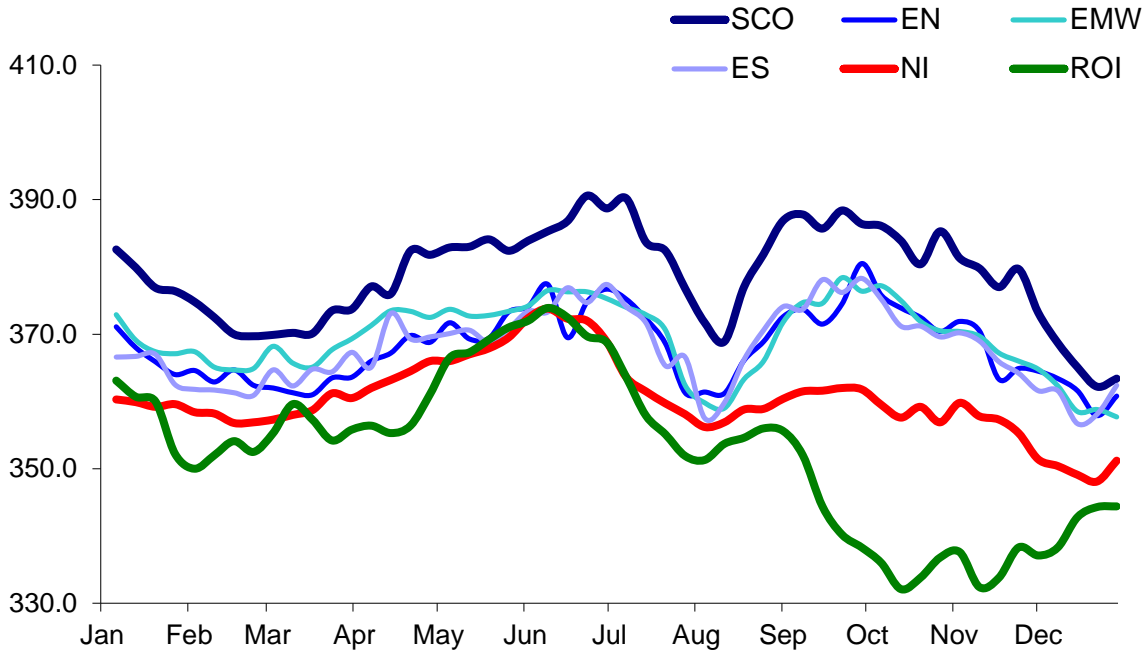
52 Weeks to 29 December 2018



Prices relate to UK Dressing Specification

British Isles R3 Heifer Price

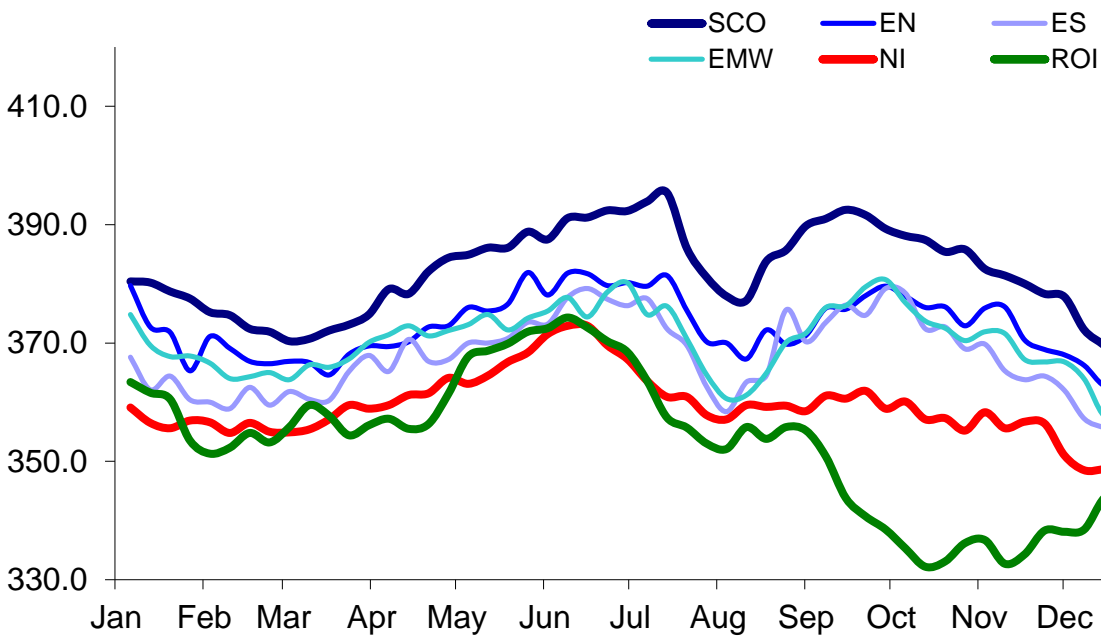
52 Weeks to 29 December 2018



Prices relate to UK Dressing Specification

British Isles R4 Heifer Price

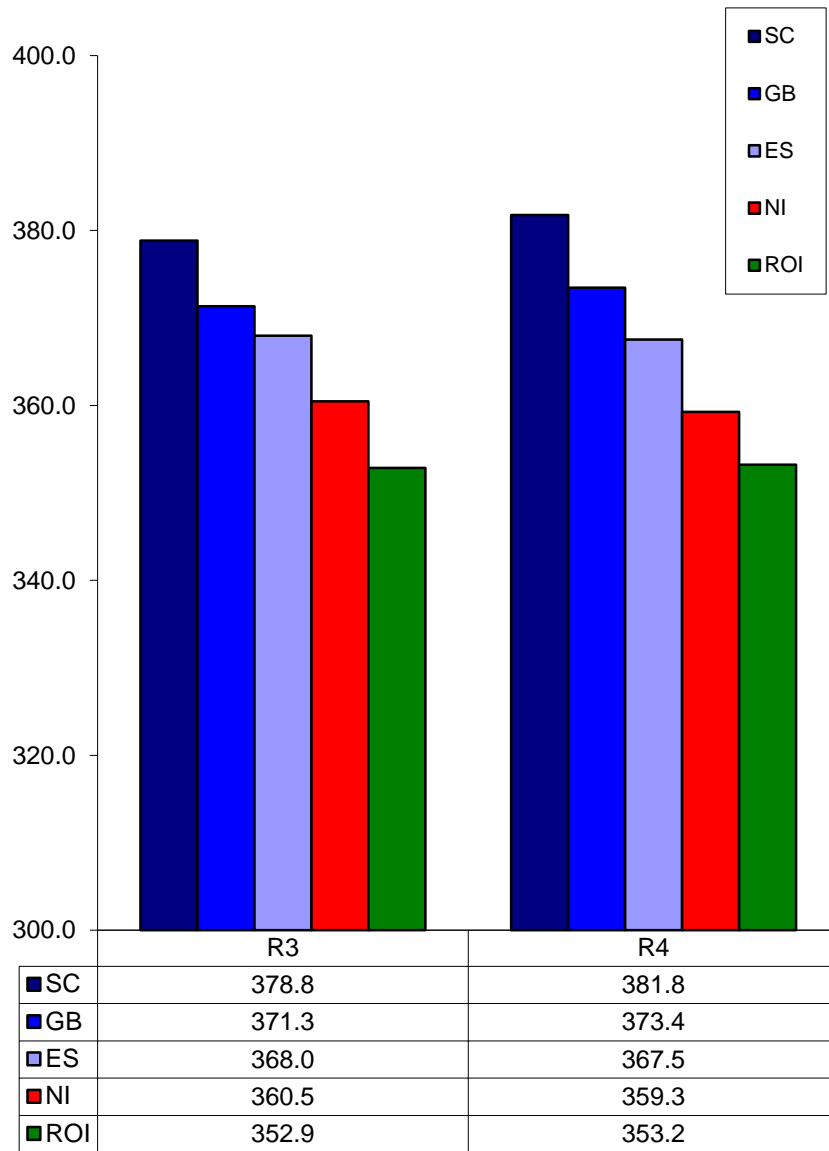
52 Weeks to 29 December 2018



Prices relate to UK Dressing Specification

British Isles Average R3 and R4 Heifer price

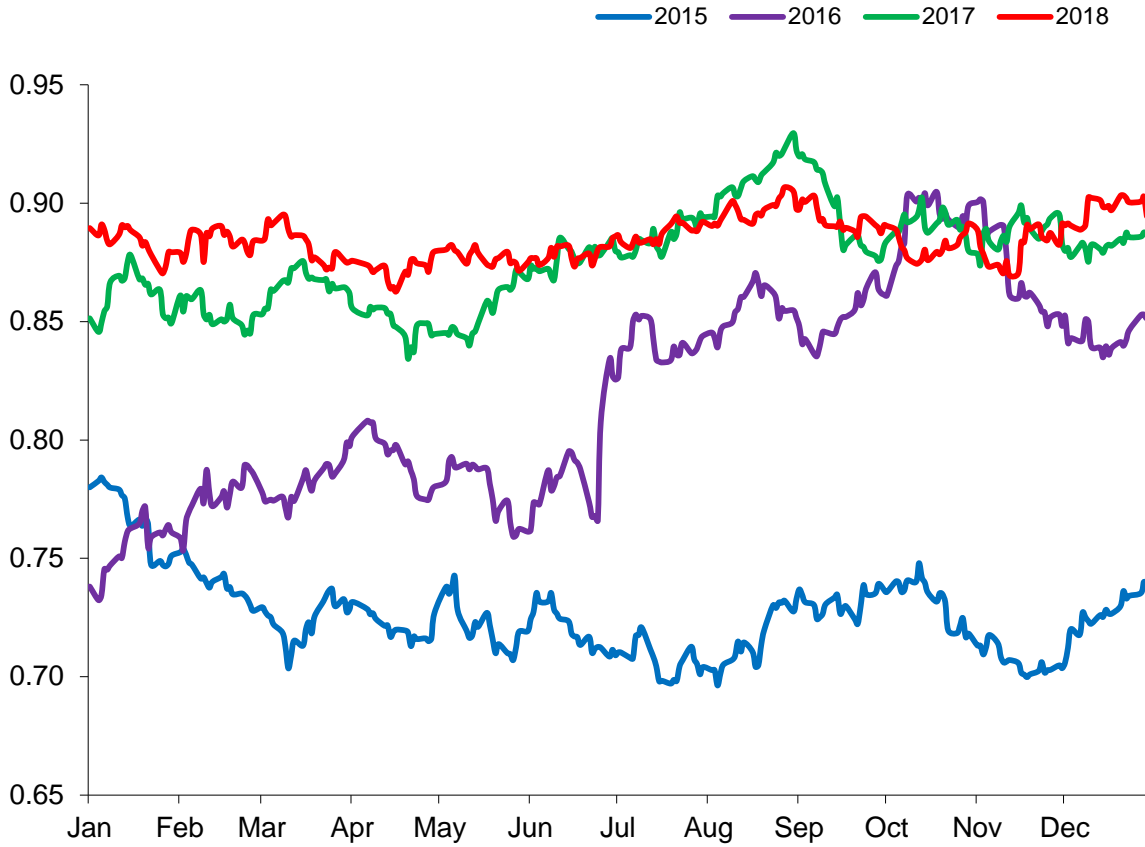
52 Weeks to 29 December 2018



Prices relate to UK Dressing Specification

Exchange Rate £ / Euro

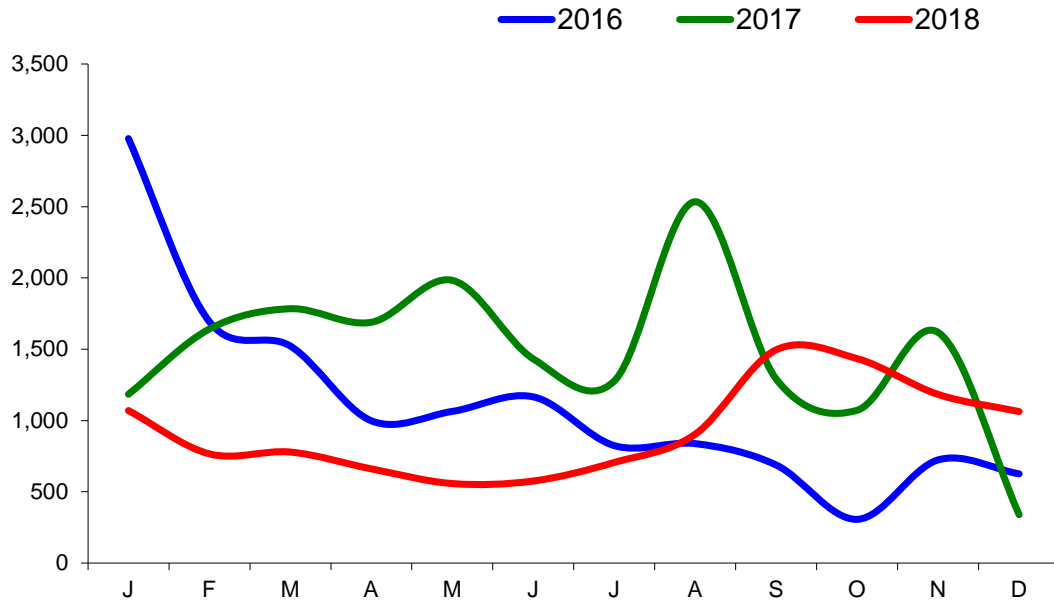
01 January 2015 –31 December 2018



Imports

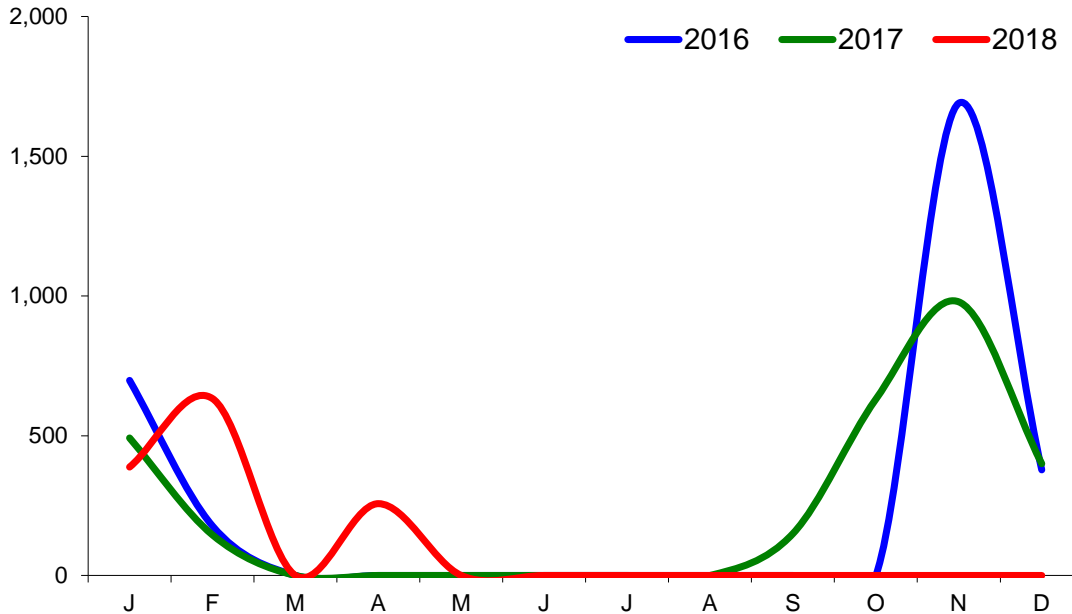
Monthly Live Imports of Cattle into NI for Direct Slaughter

From ROI and GB Combined



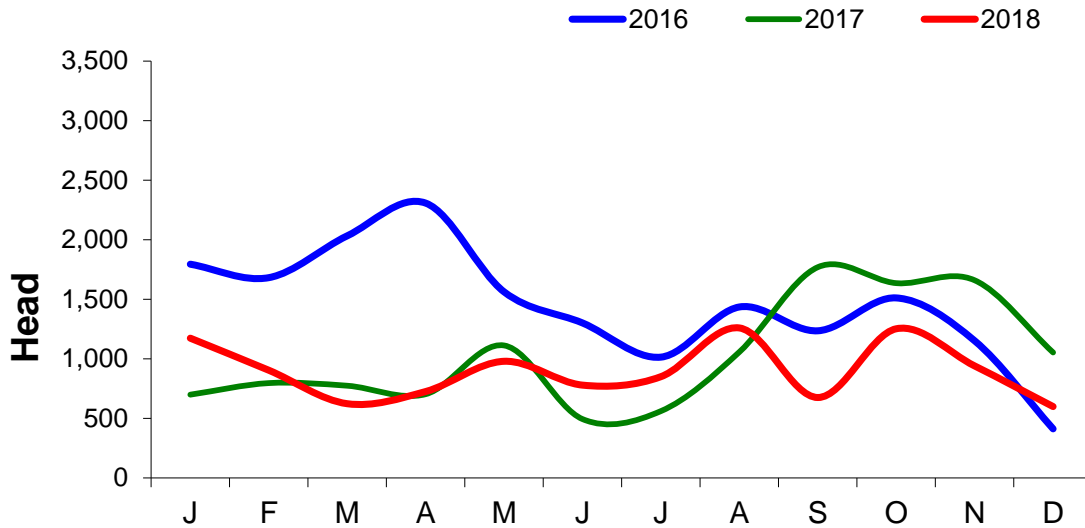
Monthly Live Imports of Sheep into NI for Direct Slaughter

From ROI and GB Combined



Exports

Monthly Live Exports of Cattle from NI into ROI and GB



Monthly Live Exports of Sheep from NI into ROI and GB

