



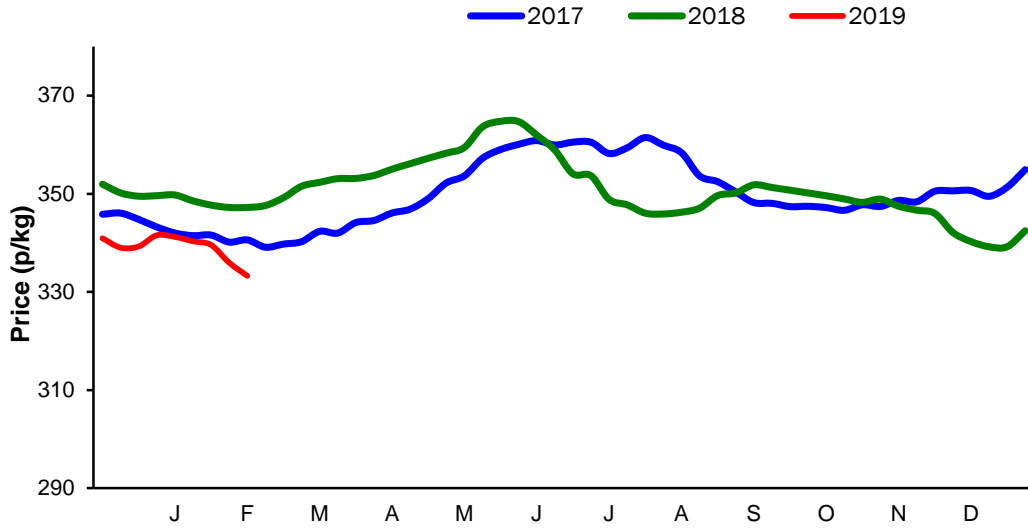
**Monthly Economic Review  
February 2019**

## Contents

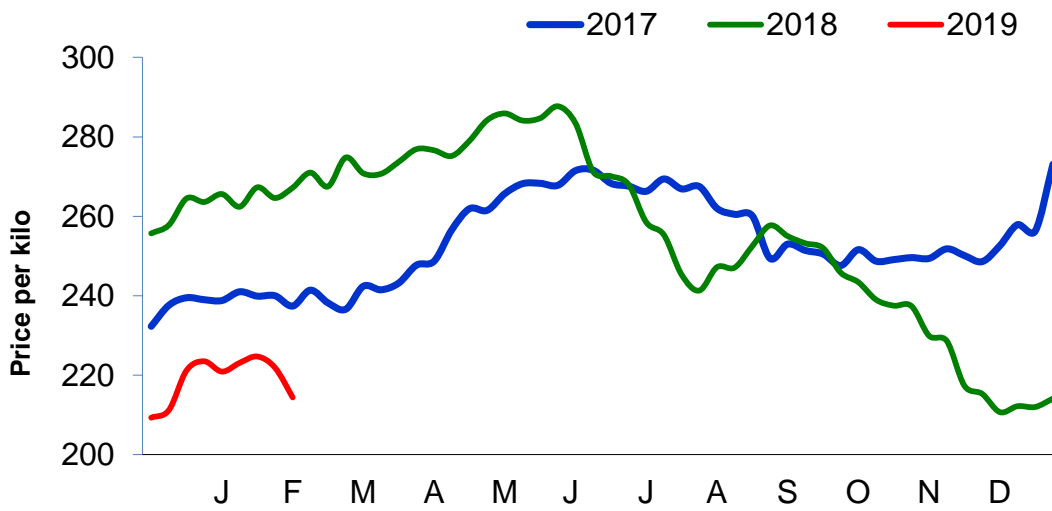
Contents.....	2
Cattle Prices .....	3
Average NI Clean Cattle Price .....	3
Average NI Cow Price.....	3
Cattle Slaughtering.....	4
NI Clean Cattle Slaughtering – Cumulative .....	4
NI Weekly Clean Cattle Slaughtering.....	4
NI Weekly Cow Slaughtering .....	5
Sheep Prices.....	6
Average NI Lamb / Hogget Price .....	6
Sheep Slaughtering.....	7
Cumulative Lamb & Hogget Slaughtering .....	7
Total Weekly Lamb & Hogget Slaughtering .....	7
Total Weekly Ewe and Ram Slaughtering.....	7
Total Carcase Weight Produced for the Food Chain.....	8
Change in Throughput / Production .....	9
Supply and Price.....	10
NI Lamb/Hogget Kill vs. Average Lamb / Hogget Price .....	10
NI Clean Cattle Kill vs. Average Clean Cattle Price.....	10
British Isles Price Comparisons .....	11
UK Average Cow Prices .....	11
Weekly UK Cow Prices .....	11
British Isles R3 Steer Price .....	12
British Isles R4 Steer Price .....	12
British Isles Average R3 and R4 Steer price .....	13
British Isles R3 Heifer Price .....	14
British Isles R4 Heifer Price .....	14
British Isles Average R3 and R4 Heifer price.....	15
Exchange Rate £ / Euro .....	16
Imports.....	17
Monthly Live Imports of Cattle into NI for Direct Slaughter .....	17
Monthly Live Imports of Sheep into NI for Direct Slaughter .....	17
Exports .....	18
Monthly Live Exports of Cattle from NI into RoI and GB.....	18
Monthly live Exports of Sheep from NI into RoI and GB .....	18

Cattle Prices

Average NI Clean Cattle Price

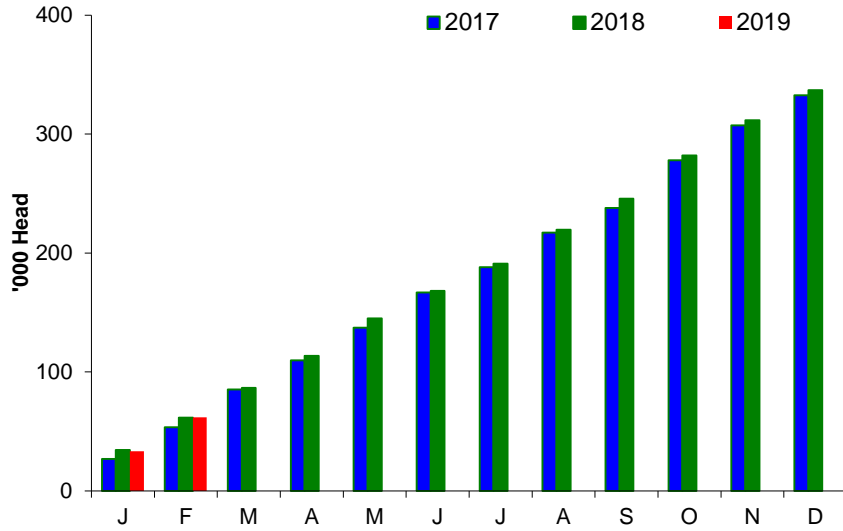


Average NI Cow Price

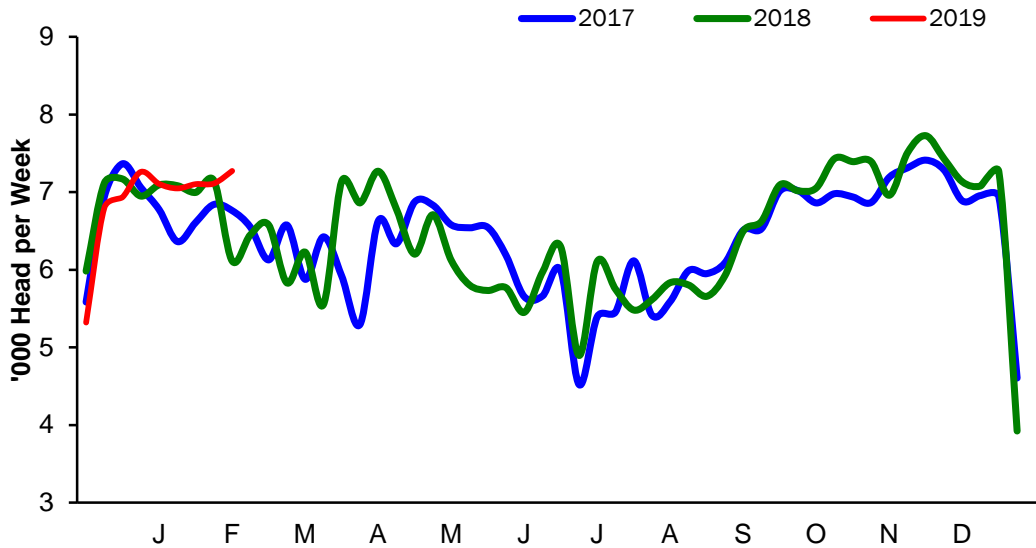


### Cattle Slaughtering

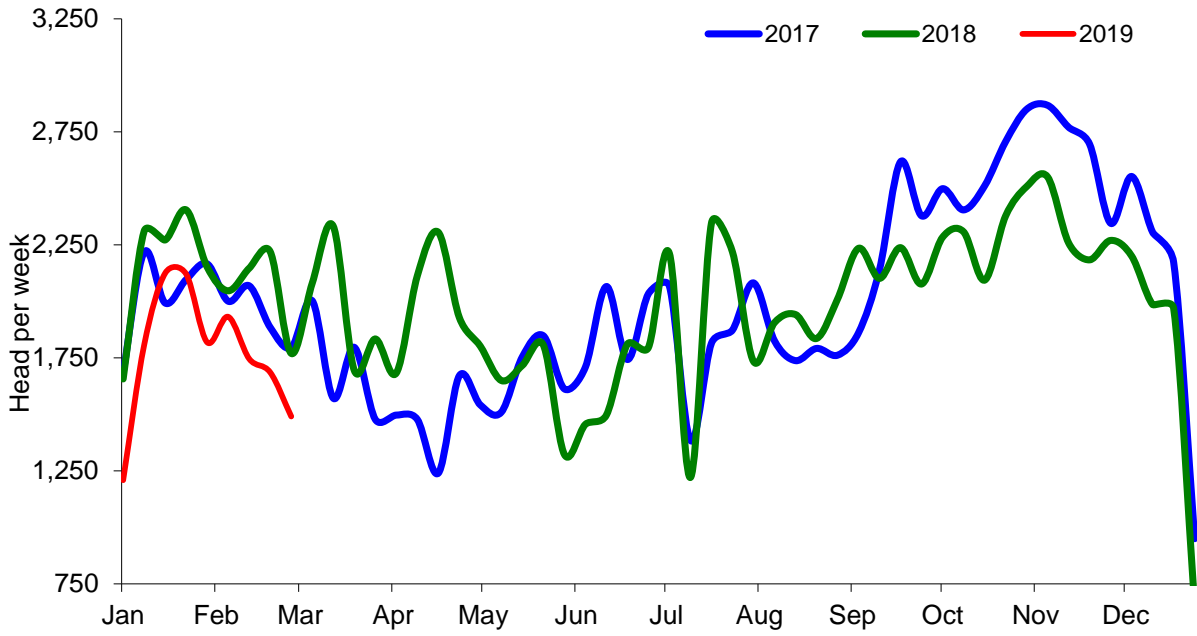
#### NI Clean Cattle Slaughtering – Cumulative



#### NI Weekly Clean Cattle Slaughtering

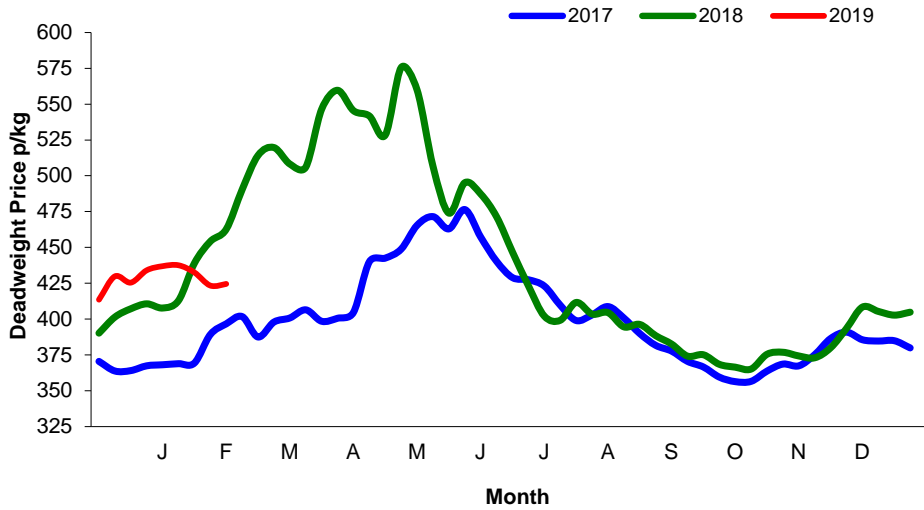


NI Weekly Cow Slaughtering



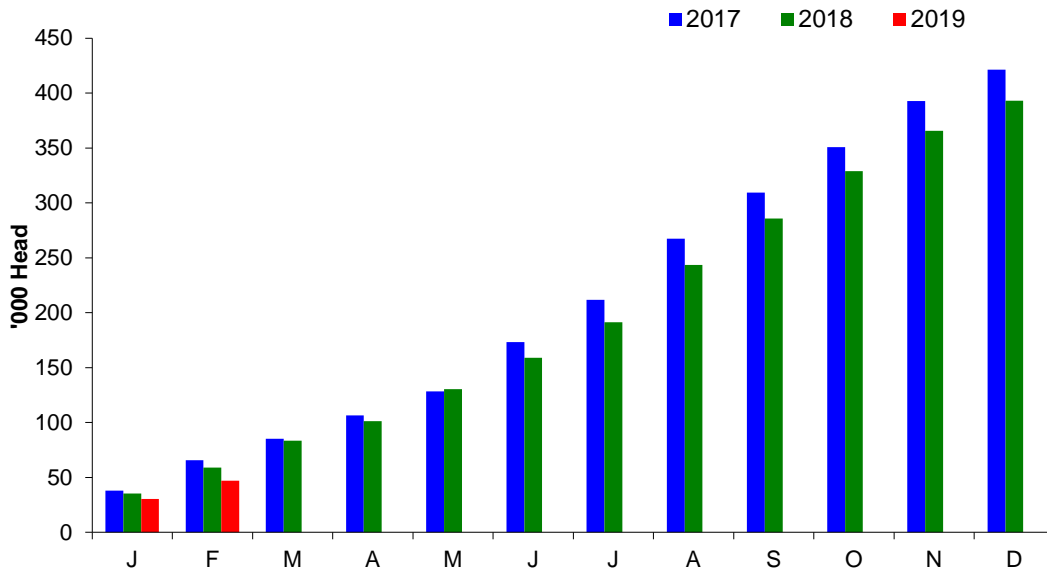
### Sheep Prices

#### Average Deadweight NI Hogget / Lamb Price

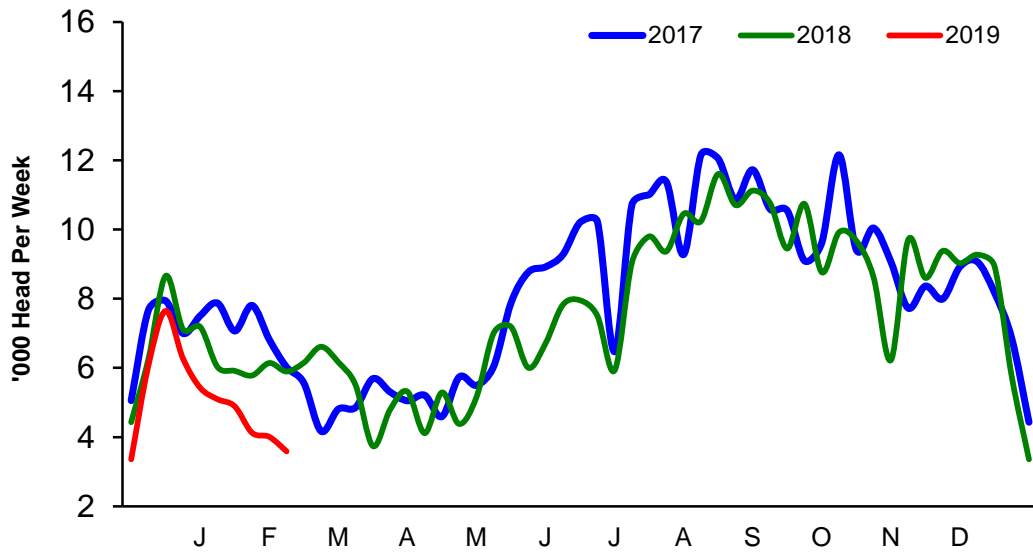


### Sheep Slaughterings

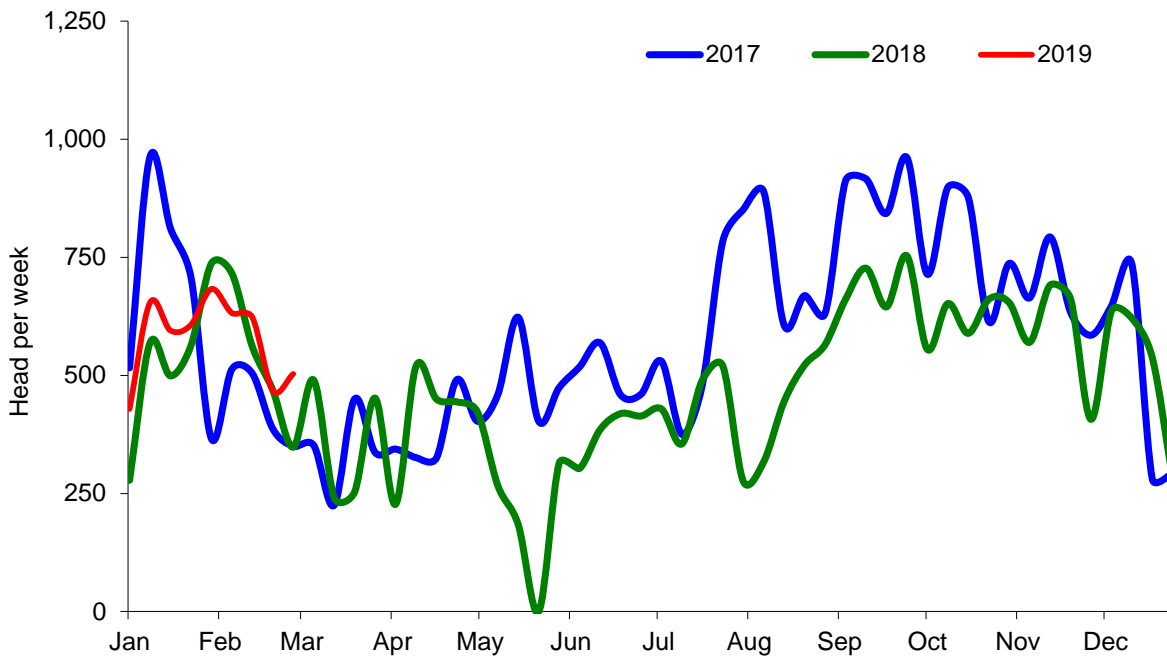
#### Cumulative Lamb & Hogget Slaughterings



### Total Weekly Lamb & Hogget Slaughtering



### Total Weekly Ewe and Ram Slaughtering



**Market Information February 2019**  
**Page 8**

<b>NI CATTLE AND SHEEP SLAUGHTERINGS FOR THE FOODCHAIN</b>						
	<b>February</b>			<b>Year to Date</b>		
	<b>(4 weeks ended 02/03/19)</b>			<b>(9 weeks ended 02/03/19)</b>		
	<b>Feb-18</b>	<b>Feb-19</b>	<b>% Change</b>	<b>2018</b>	<b>2019</b>	<b>Change</b>
<b>CATTLE</b>						
Steers	13,443	13,221	-2%	30,317	28,807	-5%
Heifers	11,134	12,197	+10%	25,413	26,230	+3%
Young Bulls / Calves	2,764	3,117	+13%	5,922	6,919	+17%
<b>Total Prime Cattle</b>	<b>27,341</b>	<b>28,535</b>	<b>+4%</b>	<b>61,652</b>	<b>61,956</b>	<b>+0%</b>
Calves	559	550	-2%	1,121	1,074	-4%
Cows	8,184	6,855	-16%	18,981	15,936	-16%
Mature Bulls	267	298	+12%	616	690	+12%
<b>Total Cattle</b>	<b>36,351</b>	<b>36,238</b>	<b>-0%</b>	<b>82,370</b>	<b>79,656</b>	<b>-3%</b>
<b>SHEEP</b>						
Lambs & Hoggets	23,732	16,604	-30%	58,978	47,116	-20%
Ewes & Rams	2,094	2,226	+6%	4,740	5,194	+10%
<b>Total Sheep</b>	<b>25,826</b>	<b>18,830</b>	<b>-27%</b>	<b>63,718</b>	<b>52,310</b>	<b>-18%</b>
The above figures are provisional; any amendments will be incorporated in the cumulative data (source DAERA).						

<b>NI BEEF AND SHEEPMEAT PRODUCTION - FOODCHAIN</b>						
	<b>February</b>			<b>Year to Date</b>		
	<b>(4 weeks ended 02/03/19)</b>			<b>(9 weeks ended 02/03/19)</b>		
	<b>Feb-18</b>	<b>Feb-19</b>	<b>% Change</b>	<b>2018</b>	<b>2019</b>	<b>Change</b>
<b>BEEF</b>						
Steers	4,740	4,778	+1%	10,716	10,367	-3%
Heifers	3,548	3,980	+12%	8,086	8,484	+5%
Young Bulls	906	1,051	+16%	1,936	2,336	+21%
<b>Total Prime Beef</b>	<b>9,194</b>	<b>9,808</b>	<b>+7%</b>	<b>20,737</b>	<b>21,187</b>	<b>+2%</b>
Calves	108	111	+3%	211	216	+2%
Cows	2,448	2,124	-13%	5,698	4,922	-14%
Mature Bulls	112	125	+11%	268	293	+9%
<b>Total Beef</b>	<b>11,862</b>	<b>12,168</b>	<b>+3%</b>	<b>26,914</b>	<b>26,618</b>	<b>-1%</b>
<b>SHEEPMEAT</b>						
Lambs & Hoggets	515	381	-26%	1,279	1,079	-16%
Ewes & Rams	53	65	+23%	125	152	+22%
<b>Total Sheepmeat</b>	<b>567</b>	<b>446</b>	<b>-21%</b>	<b>1,404</b>	<b>1,231</b>	<b>-12%</b>
The above figures are provisional; any amendments will be incorporated in the cumulative data (source DAERA).						



**Market Information February 2019**  
**Page 9**

**Total Carcase Weight Produced for the Food Chain**  
**Year-to-Date (tonnes – t.)**

Month	Prime Cattle		Cows & Bulls		Lambs/Hoggets		Ewes & Rams	
	2018	2019	2018	2019	2018	2019	2018	2019
January	11,543	11,378	3,406	2,966	764	698	73	87
February	9,194	9,808	2,560	2,249	515	381	53	65
March								
April								
May								
June								
July								
August								
September								
October								
November								
December								
<b>Total</b>	<b>20,737</b>	<b>21,186</b>	<b>5,966</b>	<b>5,215</b>	<b>1,279</b>	<b>1,079</b>	<b>126</b>	<b>152</b>
<b>Change (t.)</b>	<b>449</b>		<b>-750</b>		<b>-200</b>		<b>27</b>	
<b>% Change</b>	<b>2.17%</b>		<b>-12.58%</b>		<b>-15.62%</b>		<b>21.39%</b>	

*\*excludes calves*

**Change in Throughput / Production**

**Last 4 weeks 2018/2019**

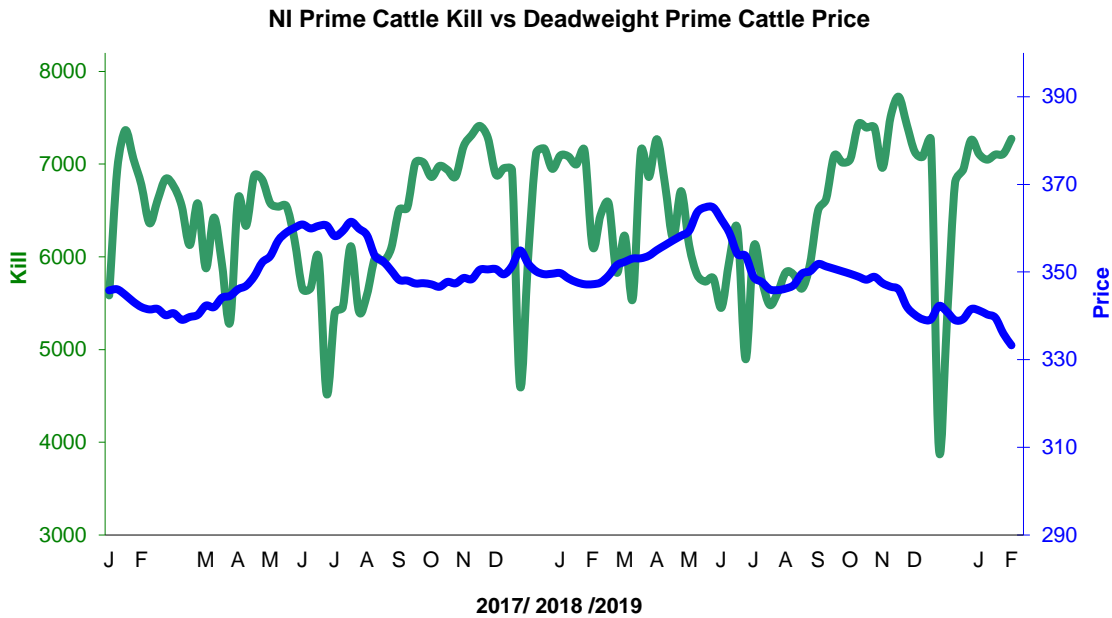
**Change in Throughput / Production 2018/2019**

**February**

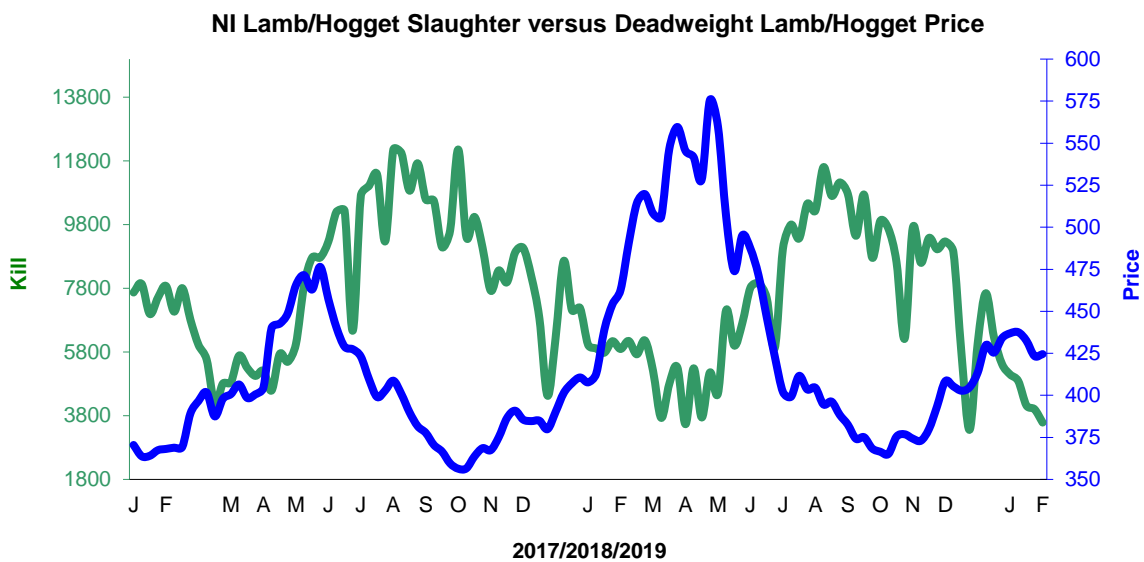
2018/2019	Number	Tonnage	ACW Kg
Prime	4.4%	6.7%	7.36
Cows	-16.2%	-13.3%	10.56
<b>Total</b>	<b>-0.3%</b>	<b>2.6%</b>	<b>9.75</b>
Lamb	-30.0%	-26.0%	1.27
Ewes and Rams	6.3%	23.0%	3.81
<b>Total Sheep</b>	<b>-27.1%</b>	<b>-21.4%</b>	<b>1.73</b>

**Supply and Price**

**NI Clean Cattle Kill vs. Average Clean Cattle Price**



**NI Lamb/Hogget Kill vs. Average Lamb / Hogget Price**

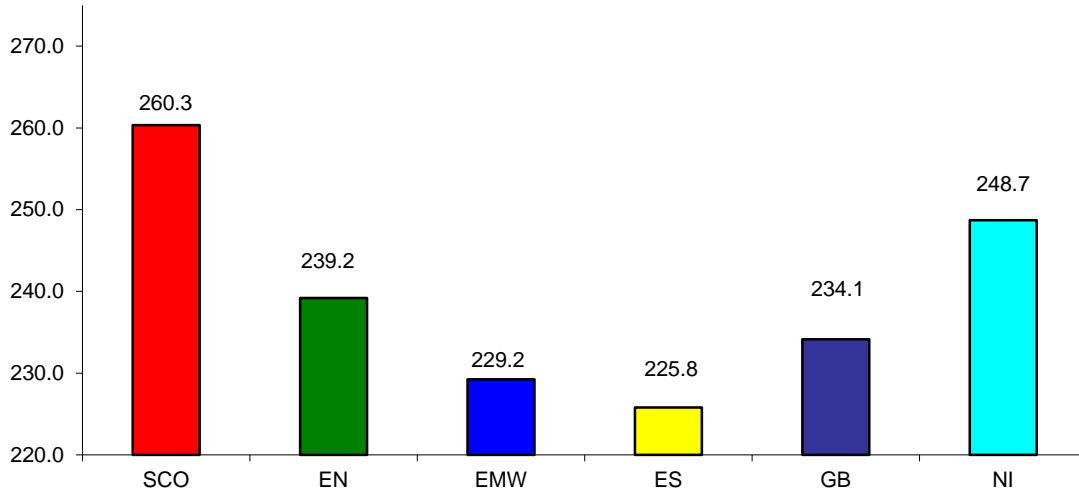


Green	Supply (Kill)
Blue	Price

**BRITISH ISLES COMPARISONS**

**UK Average Cow Prices**

**52 Weeks to 02 March 2019**

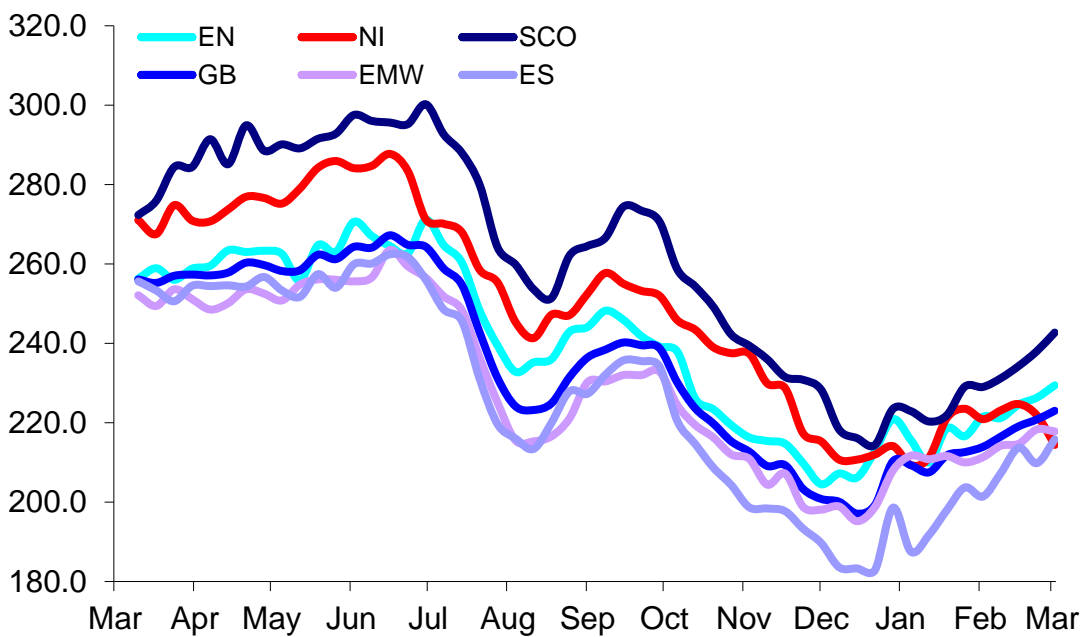


SCO	Scotland
EN	England North
EMW	England Midlands and Wales
ES	England South
NI	Northern Ireland
GB	Great Britain

Prices relate to UK Dressing Specification

**Weekly UK Cow Prices**

**52 Weeks to 02 March 2019**



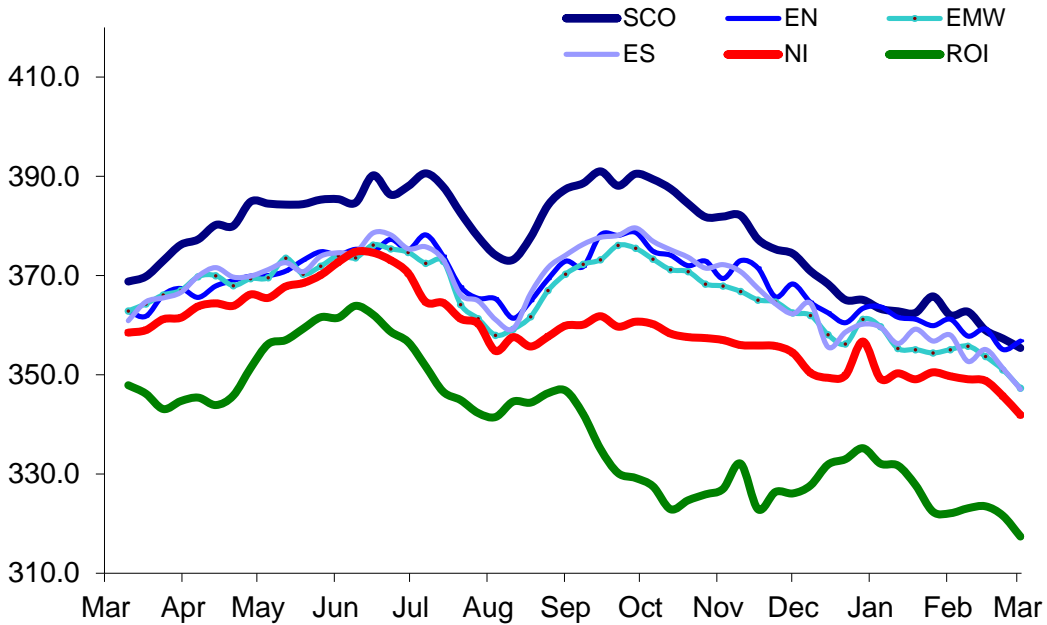
# Market Information February 2019

## Page 12

Prices relate to UK Dressing Specification

### British Isles R3 Steer Price

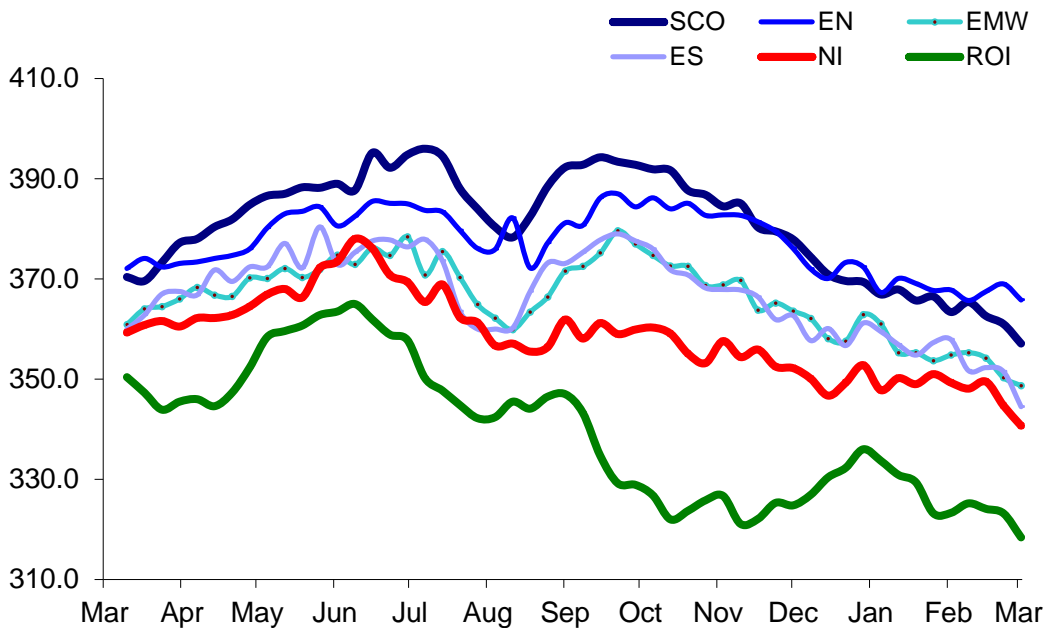
52 Weeks to 02 March 2019



Prices relate to UK Dressing Specification

### British Isles R4 Steer Price

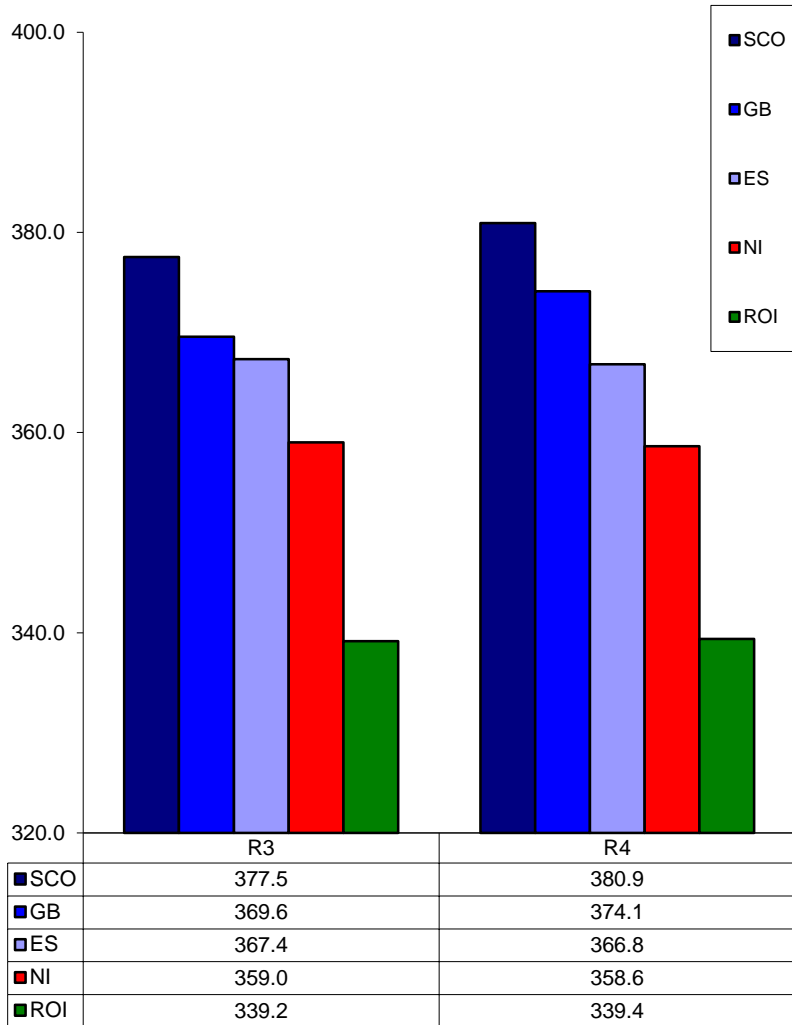
52 Weeks to 02 March 2019



Prices relate to UK Dressing Specification

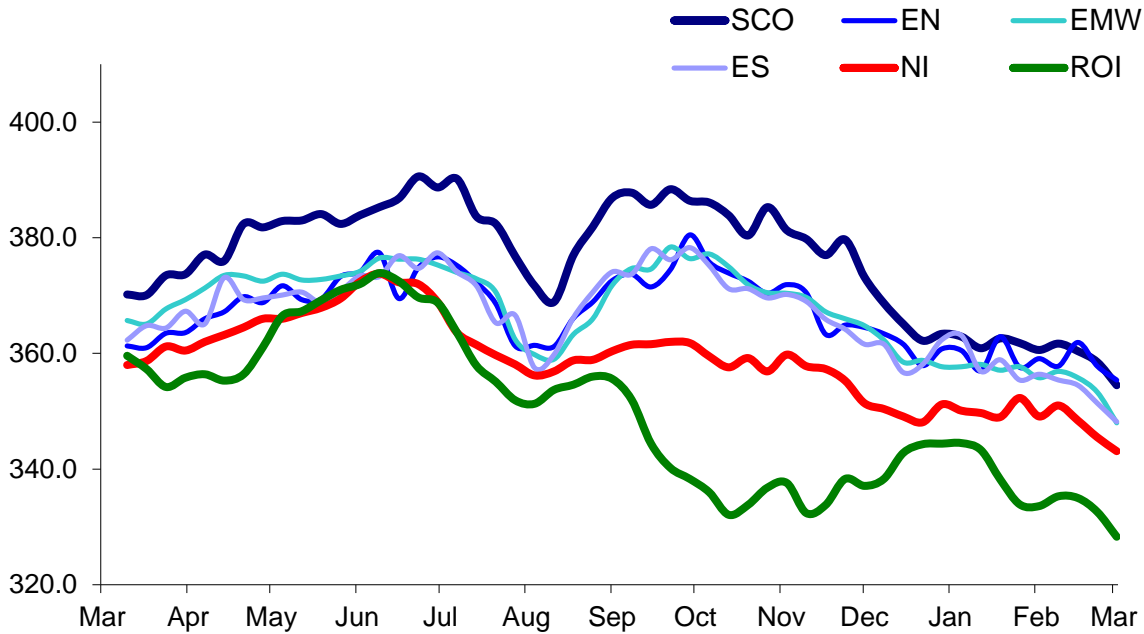
**British Isles Average R3 and R4 Steer price**

**52 Weeks to 02 March 2019**



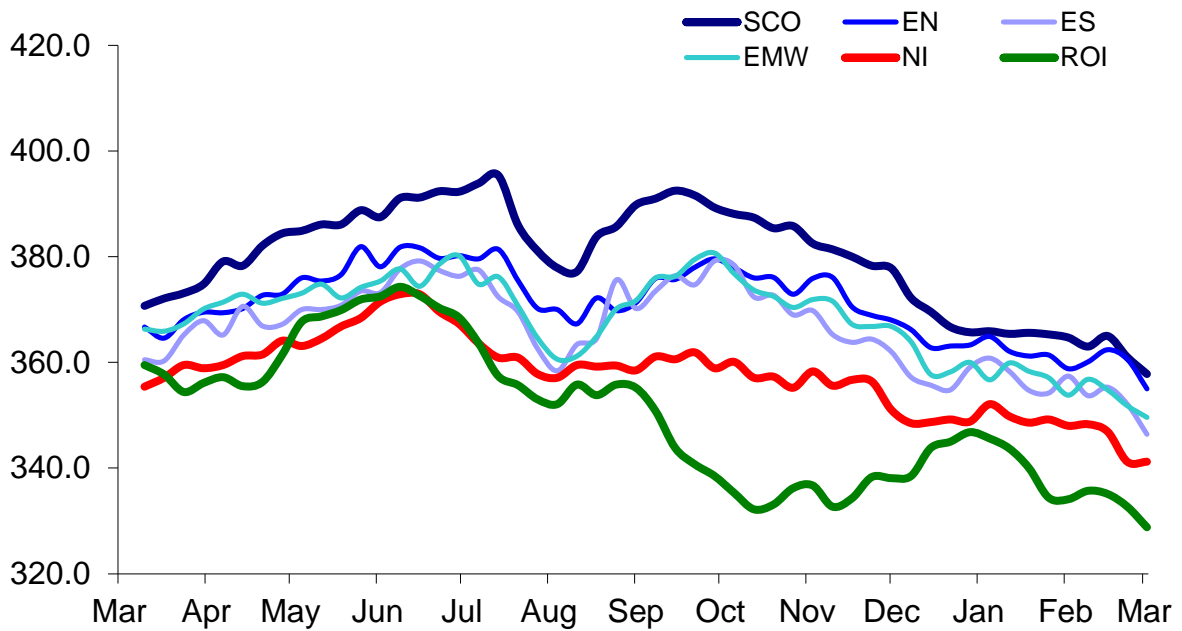
Prices relate to UK Dressing Specification

British Isles R3 Heifer Price  
52 Weeks to 02 March 2019



Prices relate to UK Dressing Specification

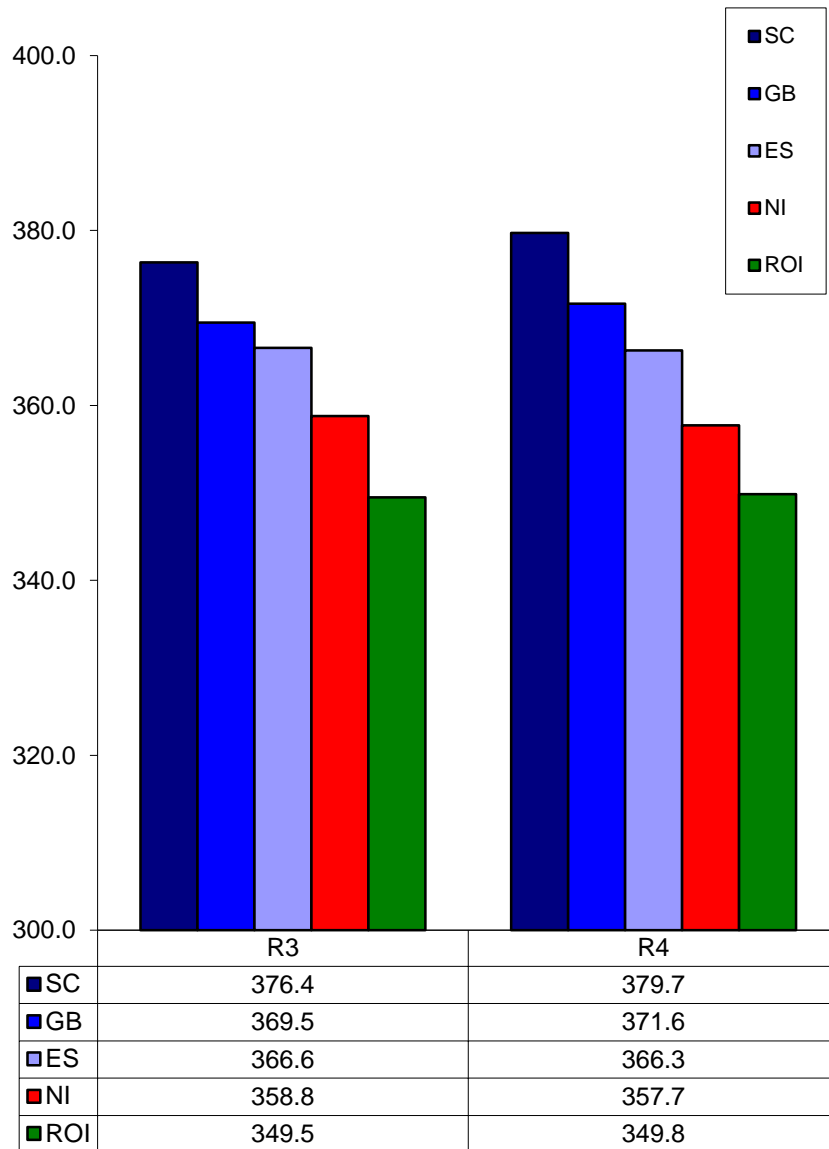
British Isles R4 Heifer Price  
52 Weeks to 02 March 2019



Prices relate to UK Dressing Specification

**British Isles Average R3 and R4 Heifer price**

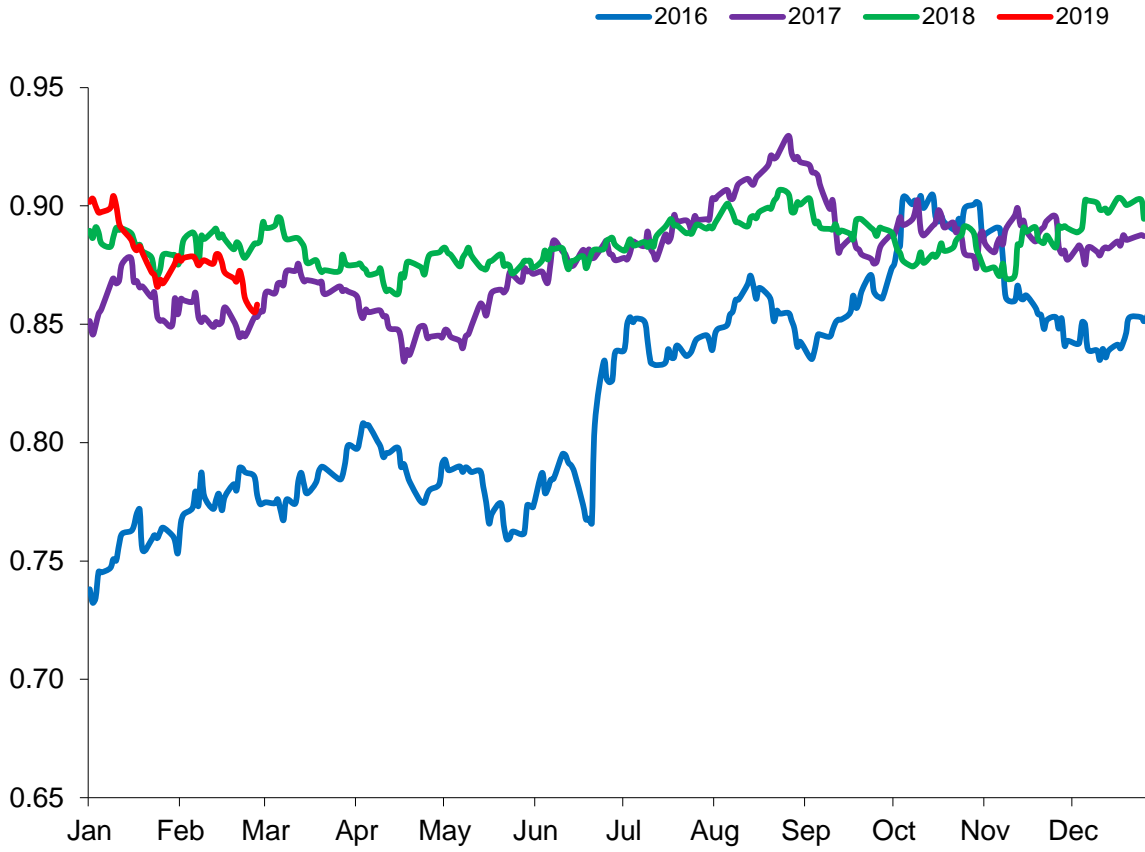
**52 Weeks to 02 March 2019**



Prices relate to UK Dressing Specification

Exchange Rate £ / Euro

01 February 2016 – 28 February 2019

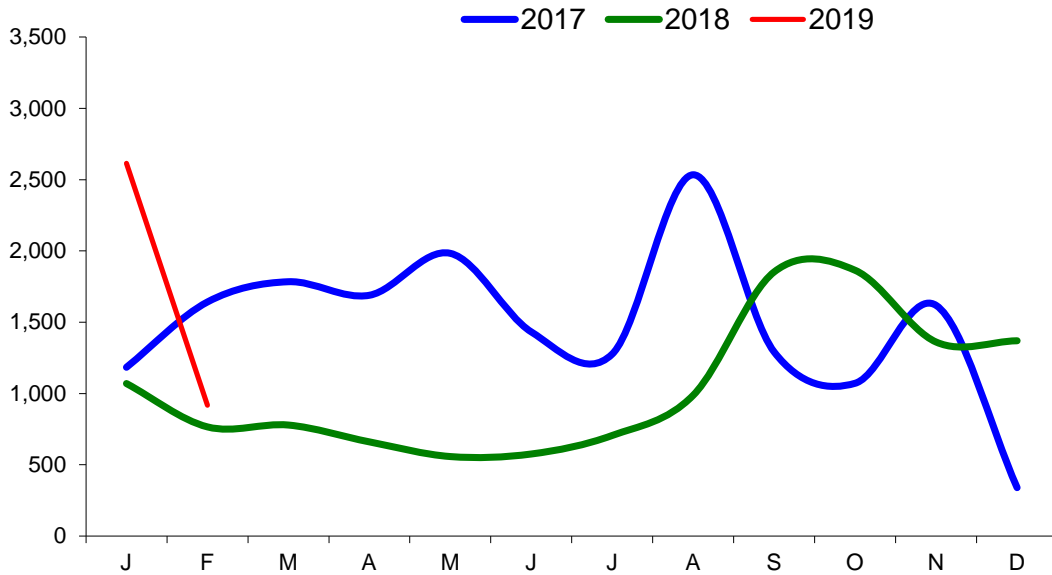




Imports

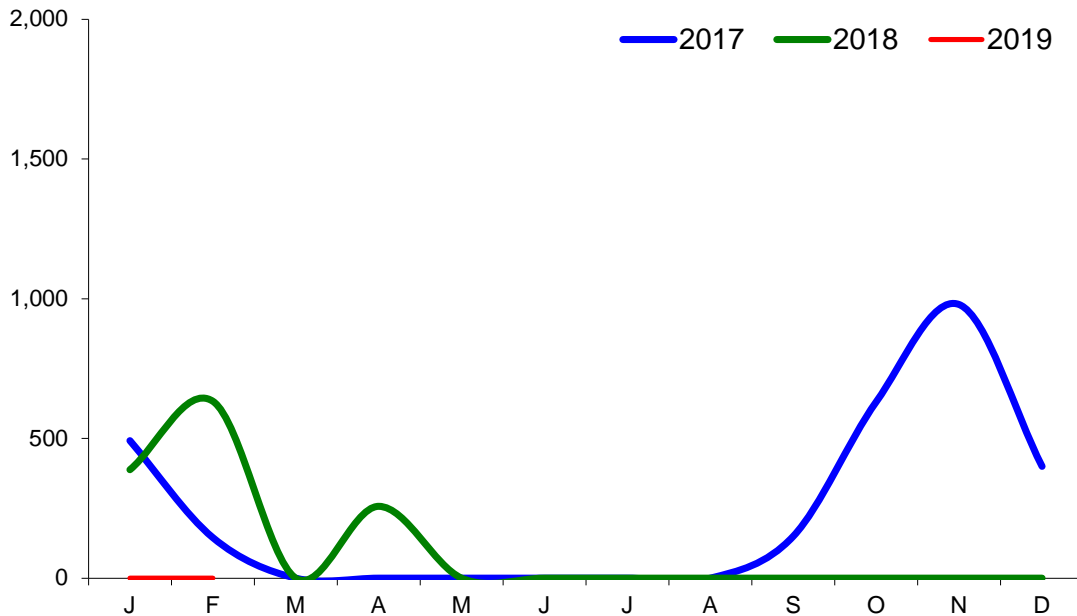
Monthly Live Imports of Cattle into NI for Direct Slaughter

From ROI and GB Combined



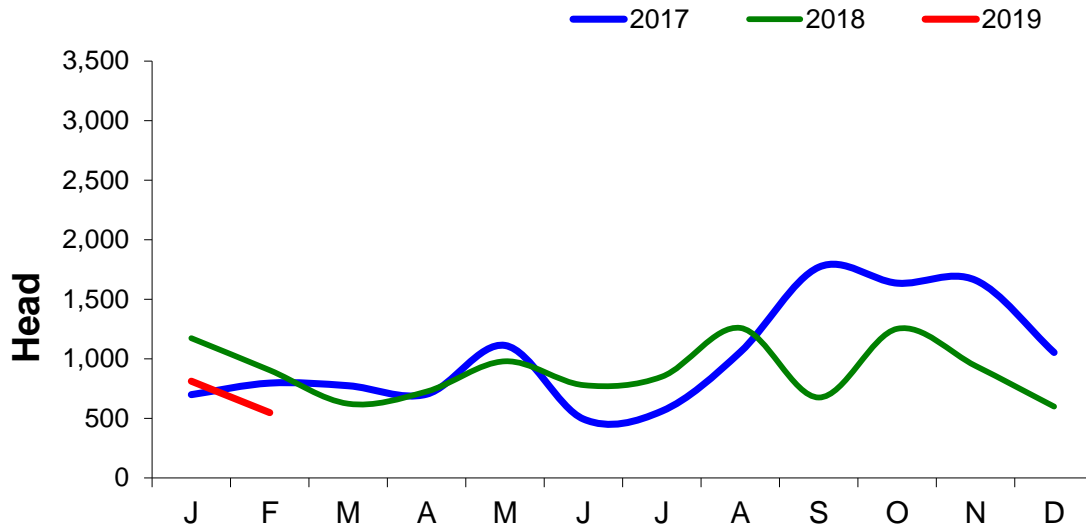
Monthly Live Imports of Sheep into NI for Direct Slaughter

From ROI and GB Combined



Exports

Monthly Live Exports of Cattle from NI into ROI and GB



Monthly Live Exports of Sheep from NI into ROI and GB

