



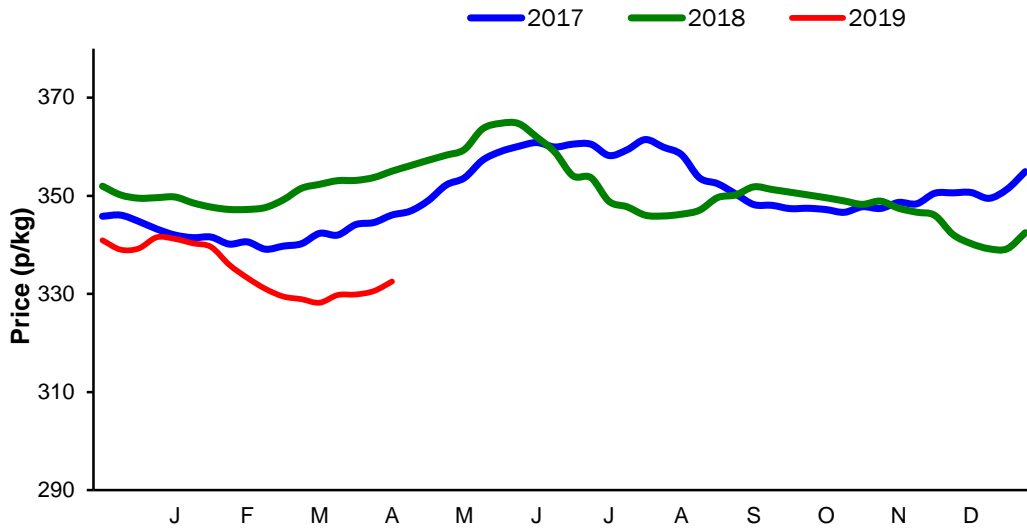
Monthly Economic Review
April 2019

Contents

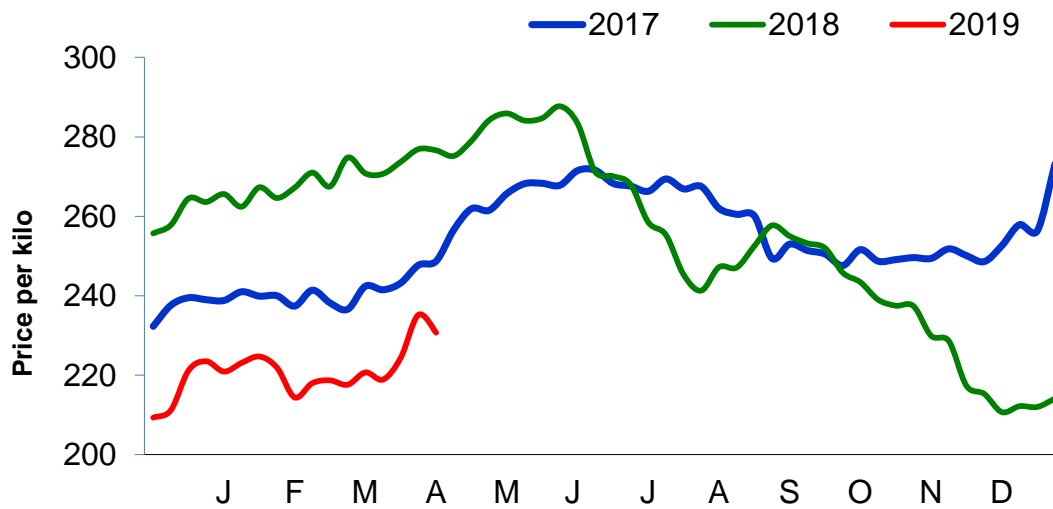
Contents.....	2
Cattle Prices	3
Average NI Clean Cattle Price	3
Average NI Cow Price.....	3
Cattle Slaughtering.....	4
NI Clean Cattle Slaughtering – Cumulative	4
NI Weekly Clean Cattle Slaughtering.....	4
NI Weekly Cow Slaughtering	5
Sheep Prices.....	6
Average NI Lamb / Hogget Price	6
Sheep Slaughtering.....	7
Cumulative Lamb & Hogget Slaughtering	7
Total Weekly Lamb & Hogget Slaughtering	7
Total Weekly Ewe and Ram Slaughtering.....	7
Total Carcase Weight Produced for the Food Chain.....	8
Change in Throughput / Production	9
Supply and Price.....	10
NI Lamb/Hogget Kill vs. Average Lamb / Hogget Price	10
NI Clean Cattle Kill vs. Average Clean Cattle Price.....	10
British Isles Price Comparisons	11
UK Average Cow Prices	11
Weekly UK Cow Prices	11
British Isles R3 Steer Price	12
British Isles R4 Steer Price	12
British Isles Average R3 and R4 Steer price	13
British Isles R3 Heifer Price	14
British Isles R4 Heifer Price	14
British Isles Average R3 and R4 Heifer price.....	15
Exchange Rate £ / Euro	16
Imports.....	17
Monthly Live Imports of Cattle into NI for Direct Slaughter	17
Monthly Live Imports of Sheep into NI for Direct Slaughter	17
Exports	18
Monthly Live Exports of Cattle from NI into RoI and GB.....	18
Monthly live Exports of Sheep from NI into RoI and GB	18

Cattle Prices

Average NI Clean Cattle Price

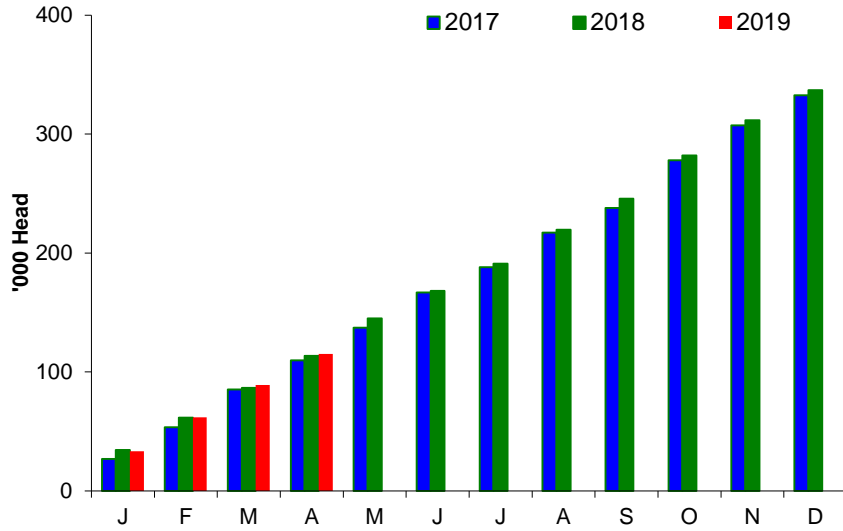


Average NI Cow Price

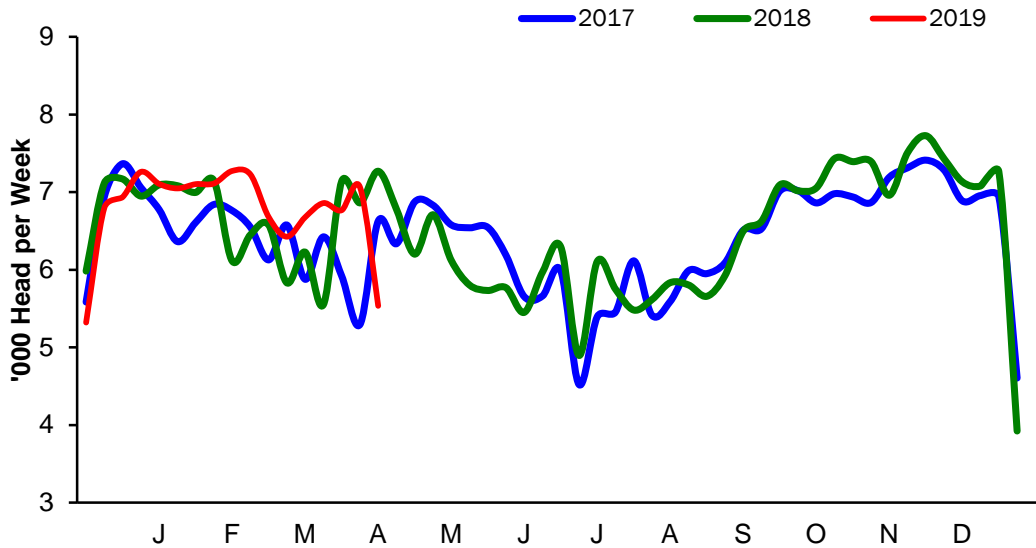


Cattle Slaughtering

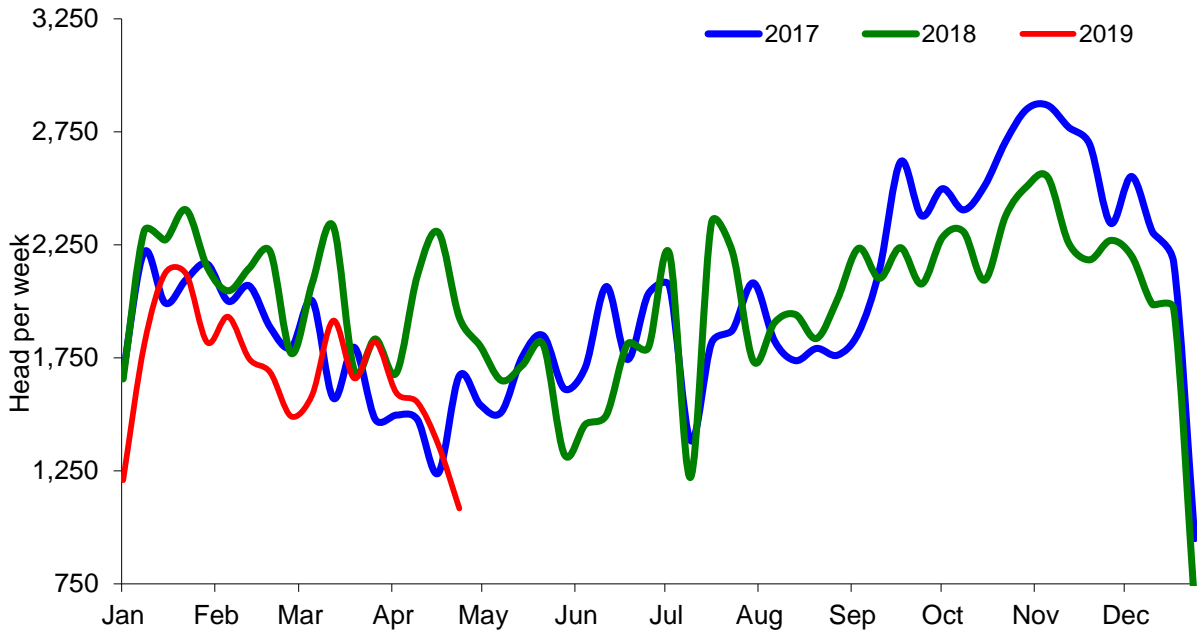
NI Clean Cattle Slaughtering – Cumulative



NI Weekly Clean Cattle Slaughtering

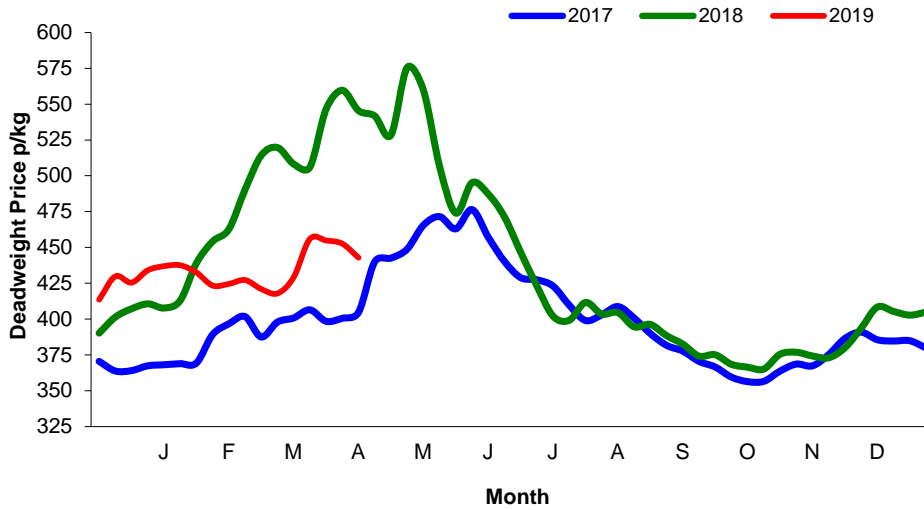


NI Weekly Cow Slaughtering



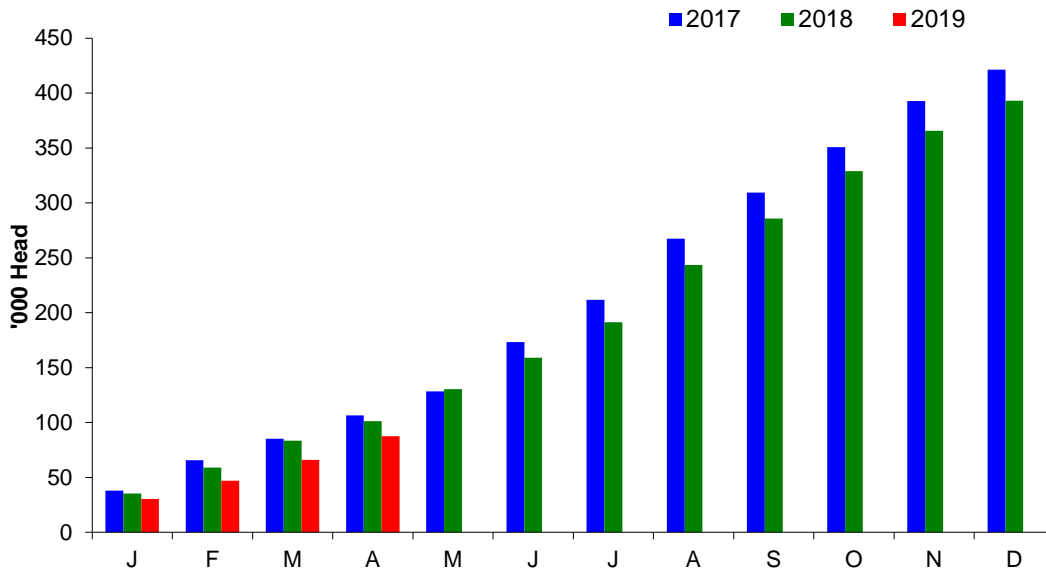
Sheep Prices

Average Deadweight NI Hogget / Lamb Price

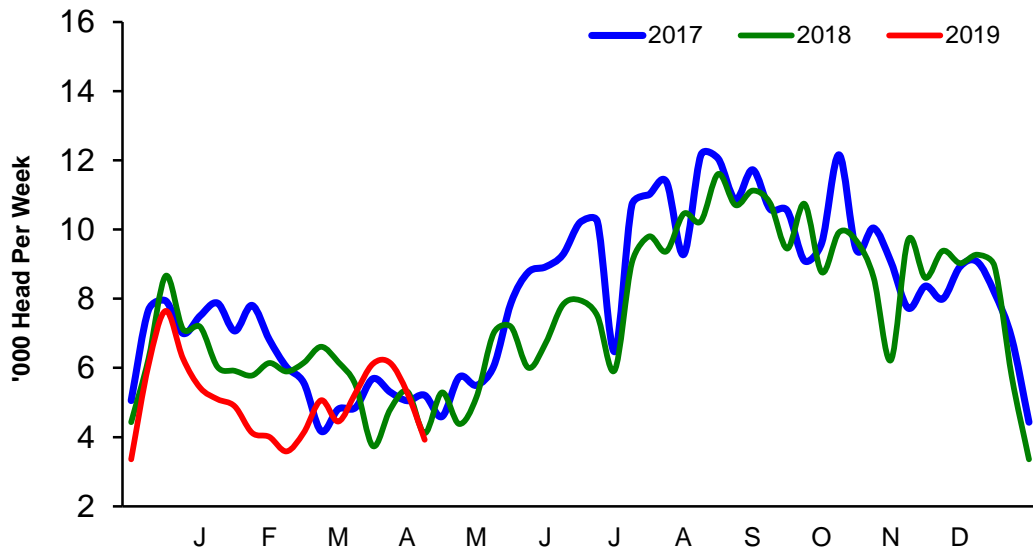


Sheep Slaughterings

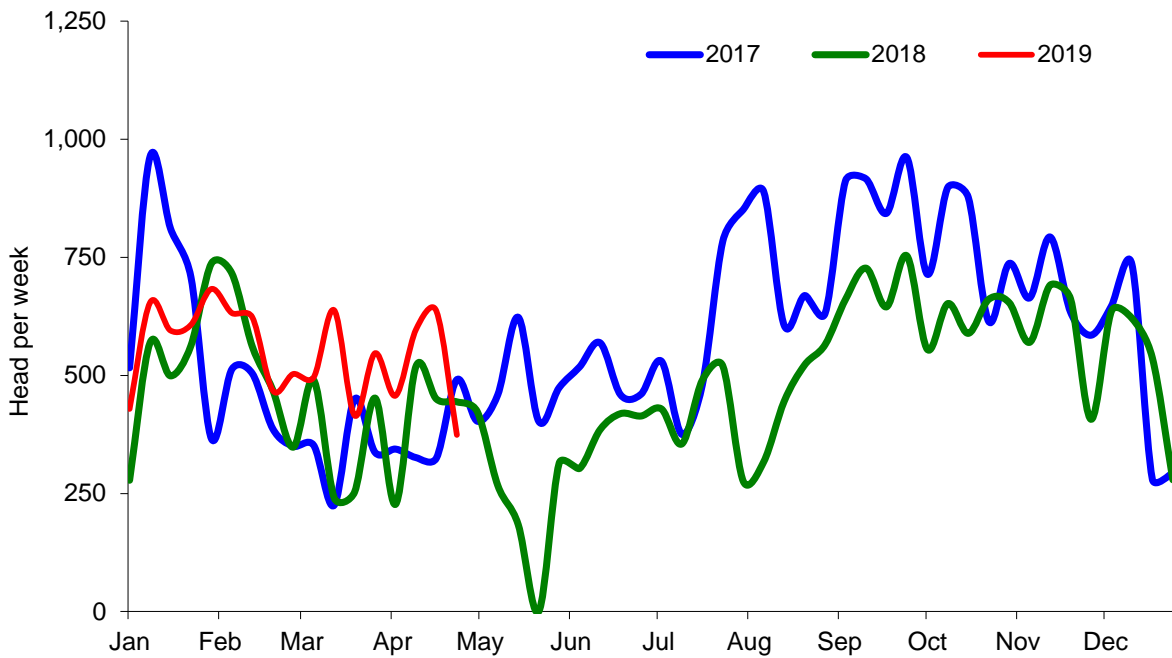
Cumulative Lamb & Hogget Slaughterings



Total Weekly Lamb & Hogget Slaughtering



Total Weekly Ewe and Ram Slaughtering



Market Information April 2019

Page 8

NI CATTLE AND SHEEP SLAUGHTERINGS FOR THE FOODCHAIN						
	April			Year to Date		
	(4 weeks ended 27/04/19)			(17 weeks ended 27/04/19)		
	Apr-18	Apr-19	% Change	2018	2019	Change
CATTLE						
Steers	12,454	11,900	-4%	54,804	53,663	-2%
Heifers	11,196	11,114	-1%	46,805	48,488	+4%
Young Bulls / Calves	3,171	3,212	+1%	11,950	13,041	+9%
Total Prime Cattle	26,821	26,226	-2%	113,559	115,192	+1%
Calves	463	340	-27%	2,033	1,911	-6%
Cows	8,031	5,600	-30%	34,955	28,520	-18%
Mature Bulls	309	310	+0%	1,184	1,289	+9%
Total Cattle	35,624	32,476	-9%	151,731	146,912	-3%
SHEEP						
Lambs & Hoggets	17,961	21,454	+19%	101,363	87,494	-14%
Ewes & Rams	1,640	2,064	+26%	7,816	9,354	+20%
Total Sheep	19,601	23,518	+20%	109,179	96,848	-11%
The above figures are provisional; any amendments will be incorporated in the cumulative data (source DAERA).						

NI BEEF AND SHEEPMEAT PRODUCTION - FOODCHAIN						
	April			Year to Date		
	(4 weeks ended 27/04/19)			(17 weeks ended 27/04/19)		
	Apr-18	Apr-19	% Change	2018	2019	Change
BEEF						
Steers	4,358	4,269	-2%	19,286	19,303	+0%
Heifers	3,514	3,585	+2%	14,804	15,667	+6%
Young Bulls	1,051	1,081	+3%	3,920	4,394	+12%
Total Prime Beef	8,922	8,934	+0%	38,011	39,364	+4%
Calves	87	73	-16%	388	390	+1%
Cows	2,375	1,708	-28%	10,447	8,764	-16%
Mature Bulls	135	134	-1%	512	550	+7%
Total Beef	11,519	10,849	-6%	49,358	49,068	-1%
SHEEPMEAT						
Lambs & Hoggets	387	508	+31%	2,199	2,027	-8%
Ewes & Rams	47	63	+36%	212	276	+30%
Total Sheepmeat	433	571	+32%	2,412	2,304	-4%
The above figures are provisional; any amendments will be incorporated in the cumulative data (source DAERA).						

Market Information April 2019
Page 9

Total Carcase Weight Produced for the Food Chain
Year-to-Date (tonnes – t.)

Month	Prime Cattle		Cows & Bulls		Lambs/Hoggets		Ewes & Rams	
	2018	2019	2018	2019	2018	2019	2018	2019
January	11,543	11,378	3,406	2,966	764	698	73	87
February	9,194	9,808	2,560	2,249	515	381	53	65
March	8,351	9,243	2,484	2,257	534	440	40	61
April	8,922	8,934	2,510	1,841	387	508	47	63
May								
June								
July								
August								
September								
October								
November								
December								
Total	38,010	39,363	10,960	9,313	2,200	2,027	213	276
Change (t.)	1,353		-1,646		-173		64	
% Change	3.56%		-15.02%		-7.85%		30.04%	

**excludes calves*

Change in Throughput / Production

Last 4 weeks 2018/2019

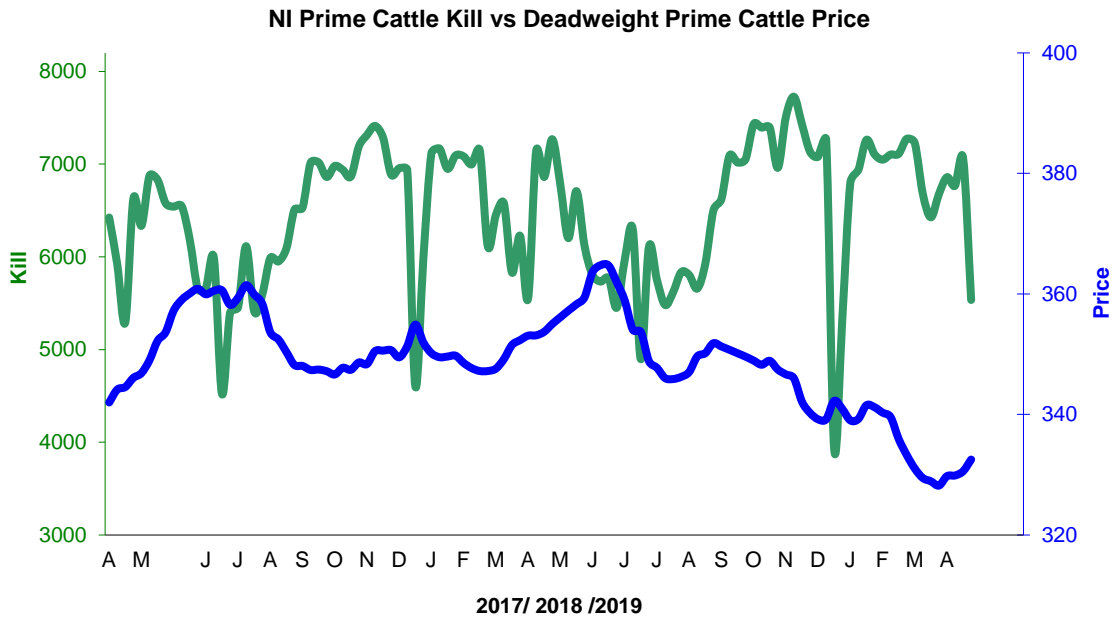
Change in Throughput / Production 2018/2019

April

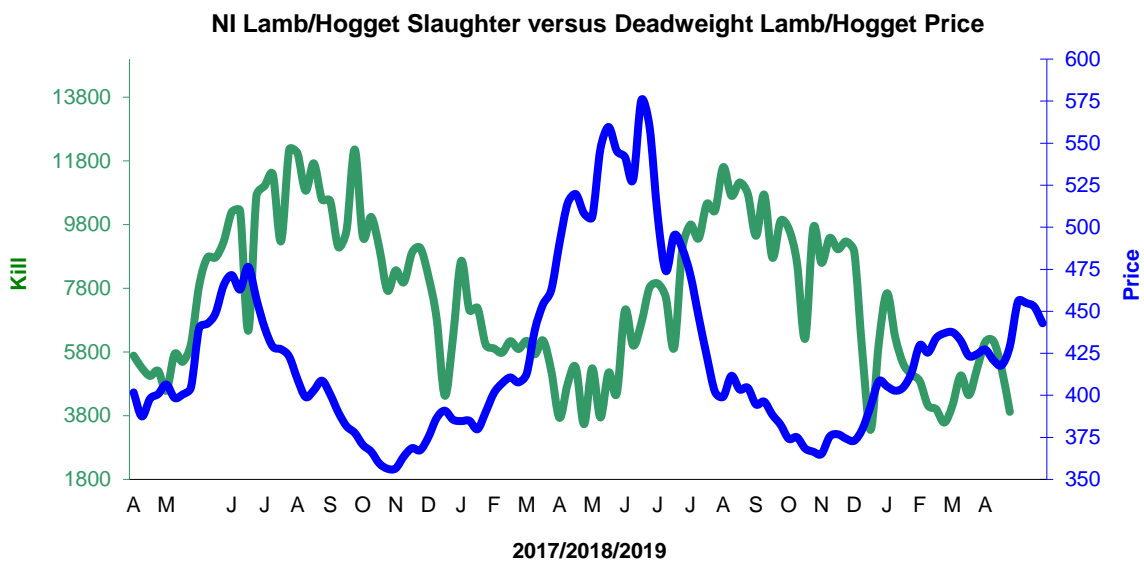
2018/2019	Number	Tonnage	ACW Kg
Prime	-2.2%	0.1%	8.13
Cows	-30.3%	-28.1%	9.84
Total	-8.8%	-5.8%	11.36
Lamb	19.4%	31.3%	2.08
Ewes and Rams	25.9%	35.6%	2.52
Total Sheep	20.0%	31.7%	2.14

Supply and Price

NI Clean Cattle Kill vs. Average Clean Cattle Price



NI Lamb/Hogget Kill vs. Average Lamb / Hogget Price

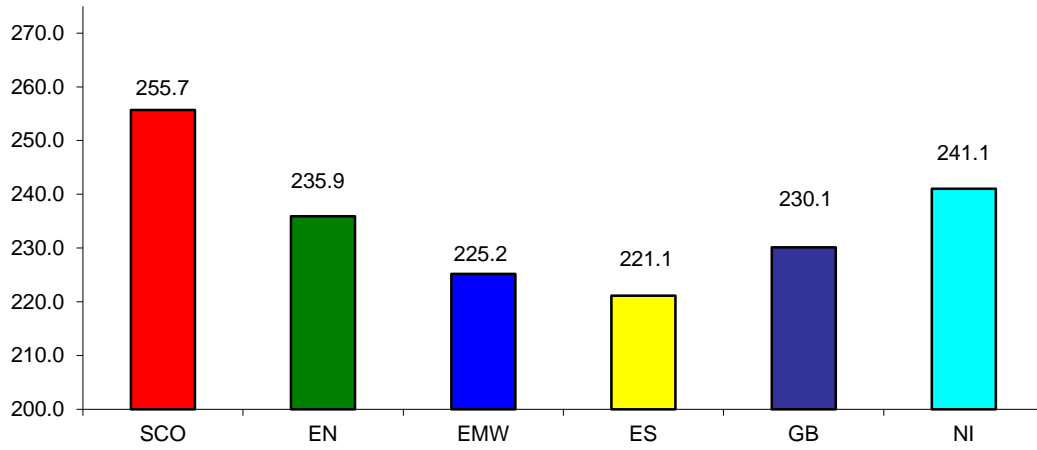


Green	Supply (Kill)
Blue	Price

BRITISH ISLES COMPARISONS

UK Average Cow Prices

52 Weeks to 27 April 2019

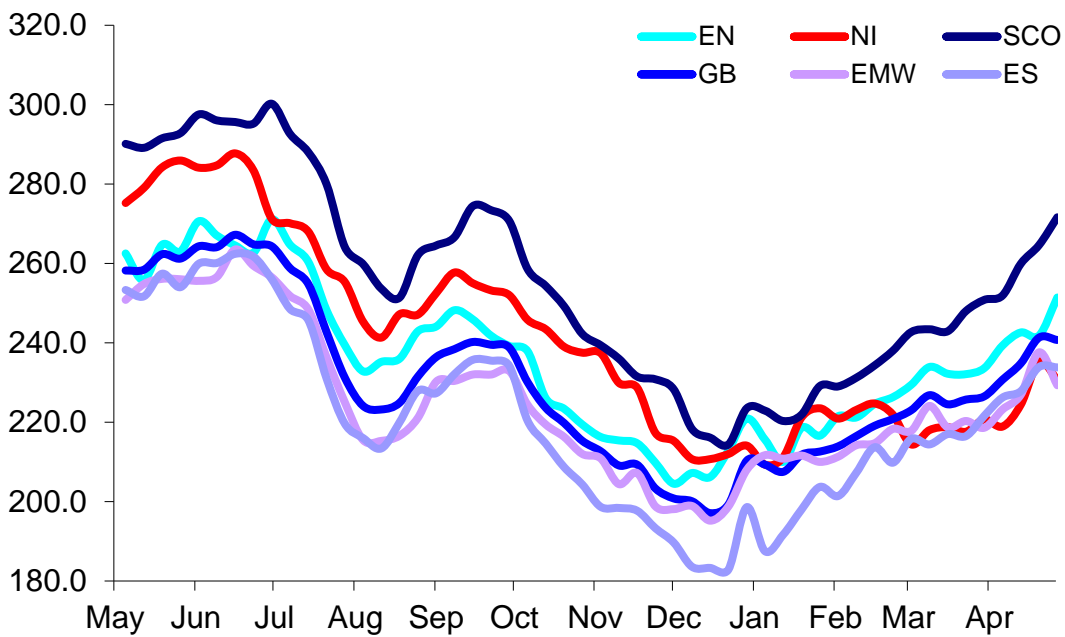


SCO	Scotland
EN	England North
EMW	England Midlands and Wales
ES	England South
NI	Northern Ireland
GB	Great Britain

Prices relate to UK Dressing Specification

Weekly UK Cow Prices

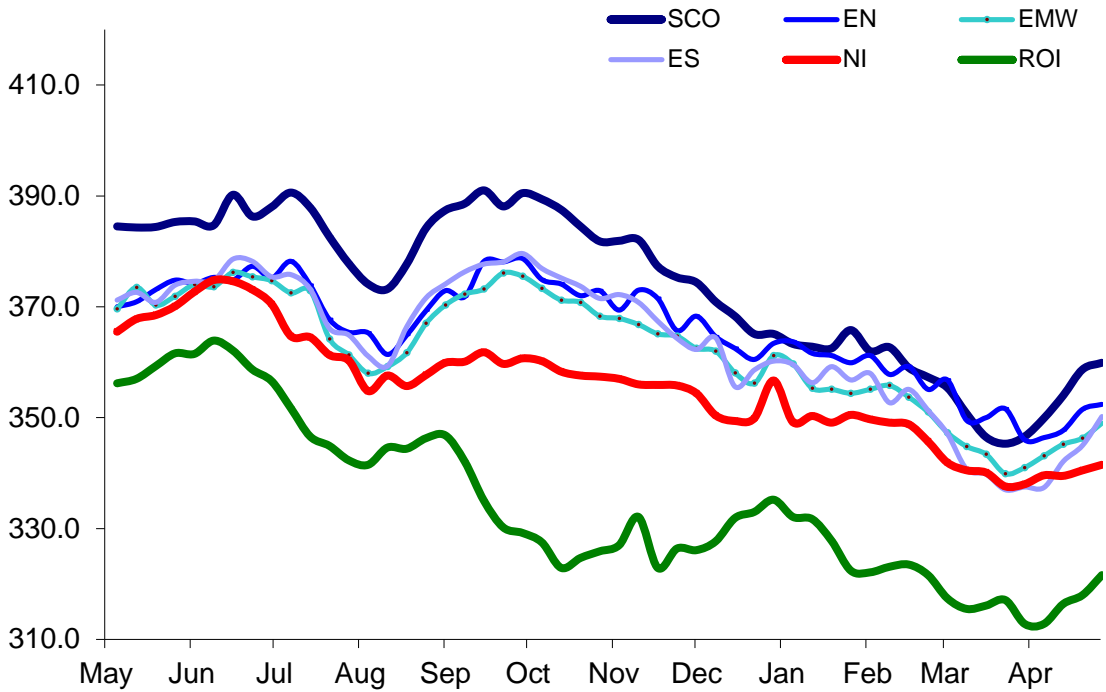
52 Weeks to 27 April 2019



Prices relate to UK Dressing Specification

British Isles R3 Steer Price

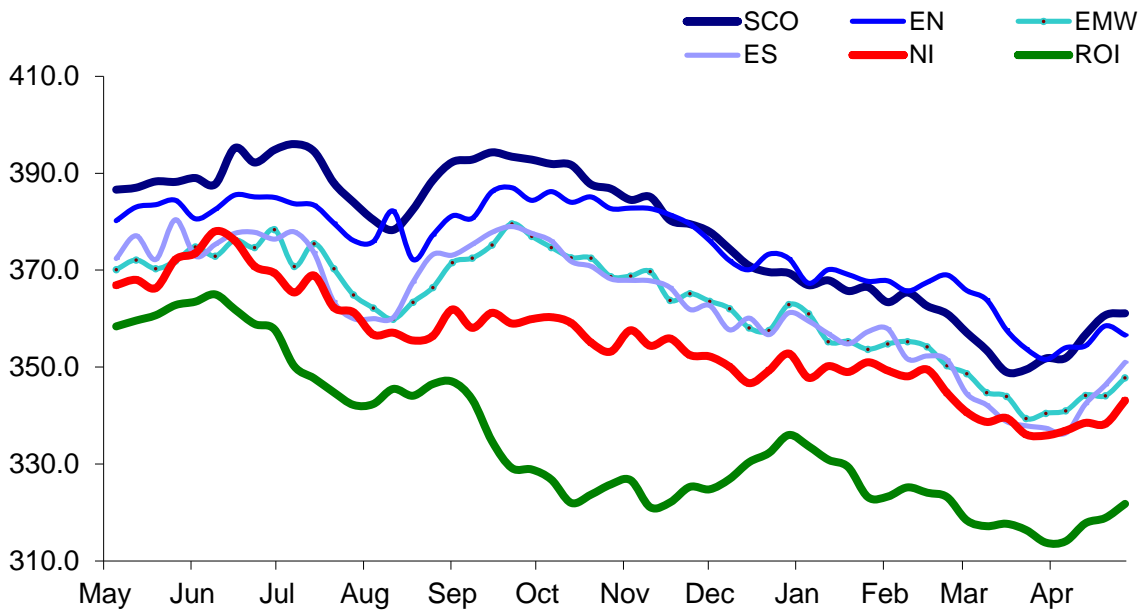
52 Weeks to 27 April 2019



Prices relate to UK Dressing Specification

British Isles R4 Steer Price

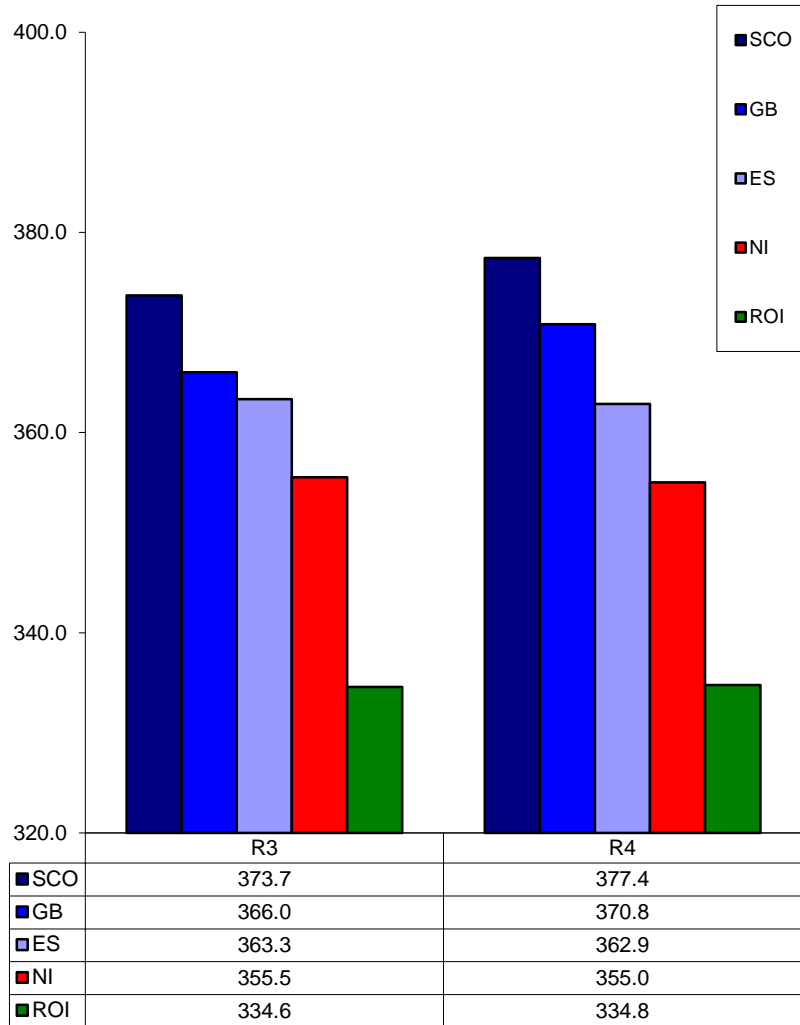
52 Weeks to 27 April 2019



Prices relate to UK Dressing Specification

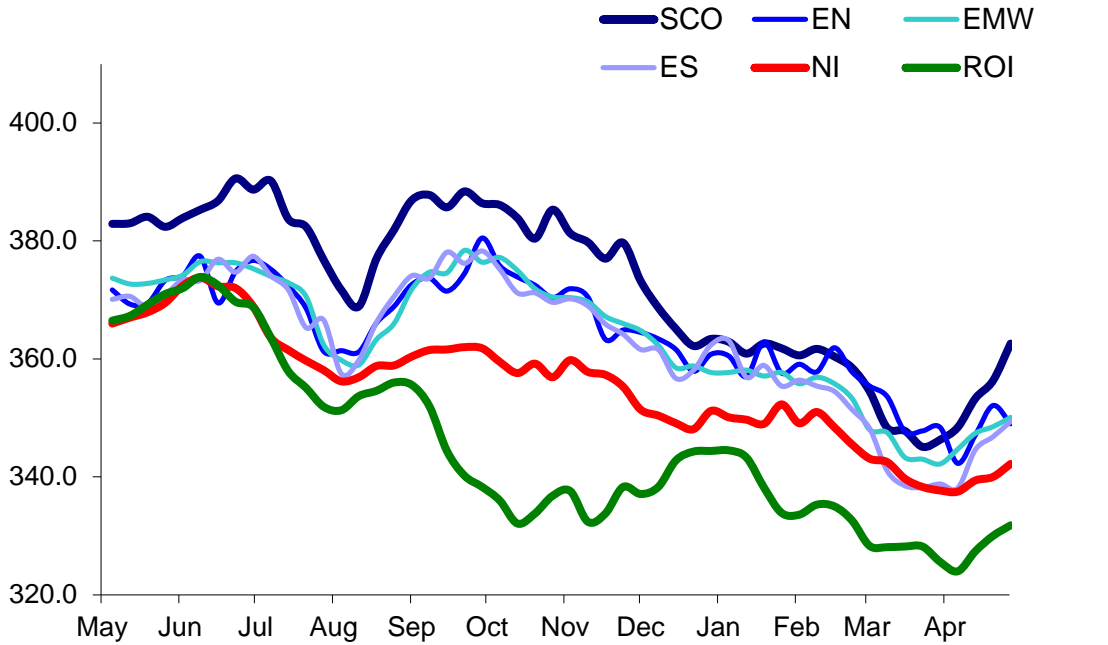
British Isles Average R3 and R4 Steer price

52 Weeks to 27 April 2019



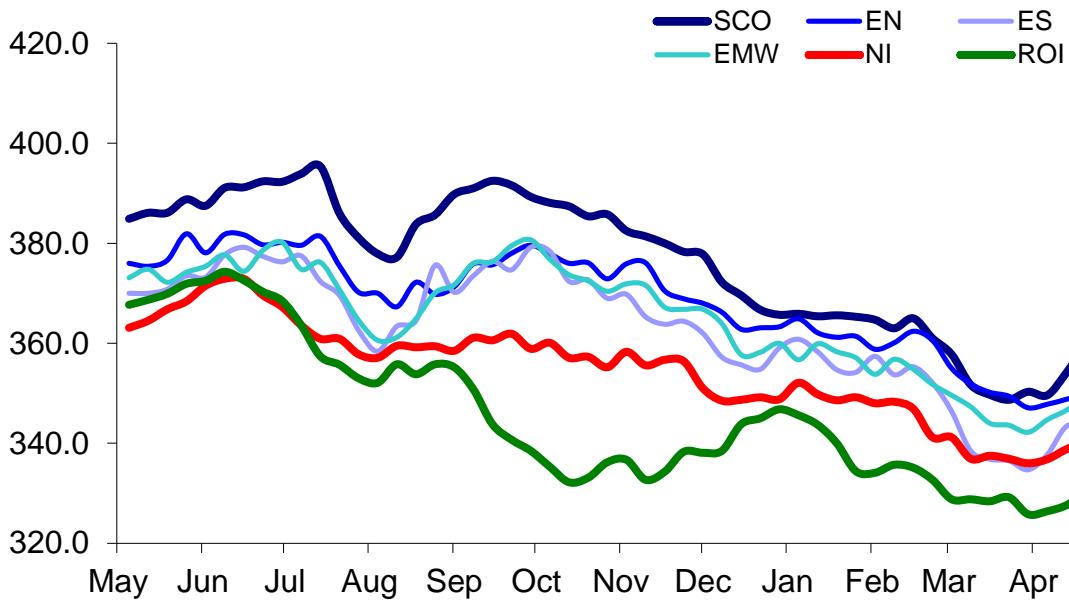
Prices relate to UK Dressing Specification

British Isles R3 Heifer Price
52 Weeks to 27 April 2019



Prices relate to UK Dressing Specification

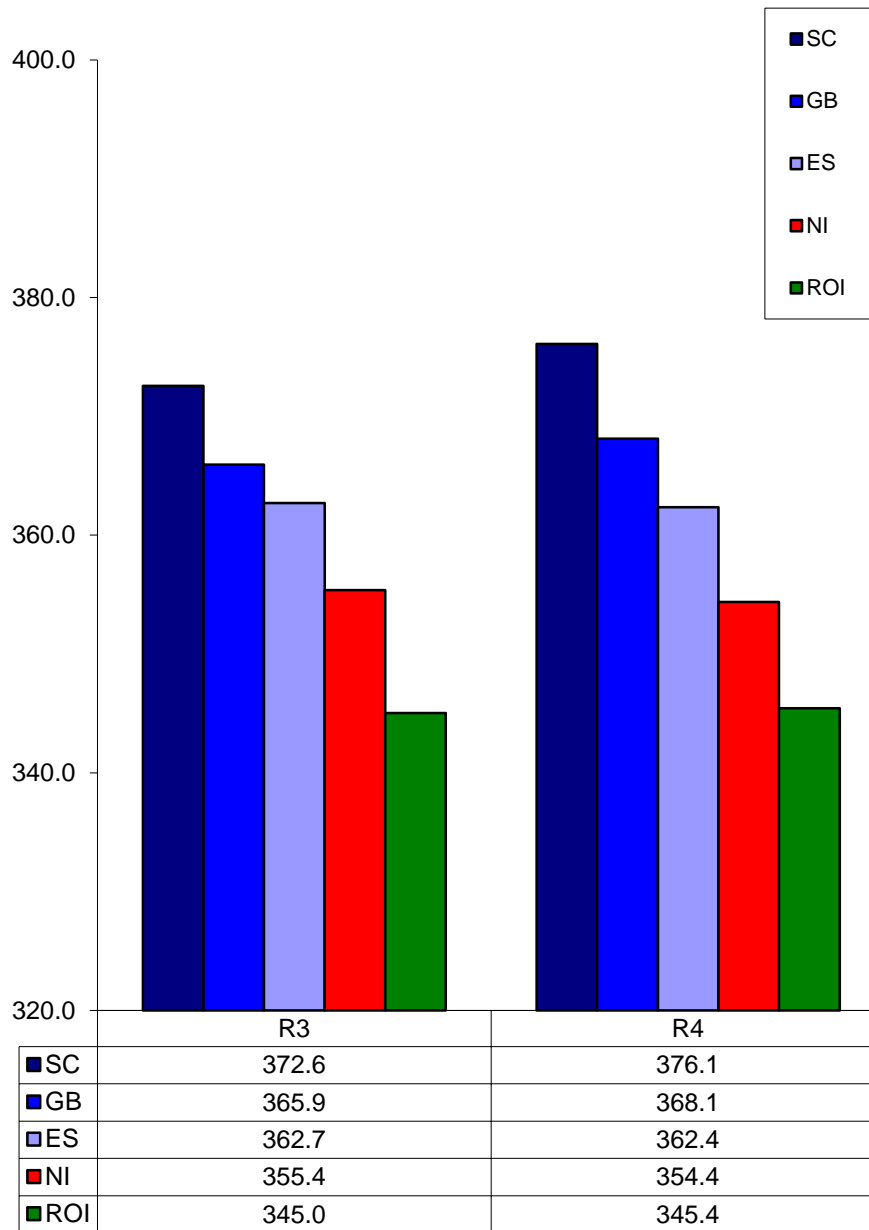
British Isles R4 Heifer Price
52 Weeks to 27 April 2019



Prices relate to UK Dressing Specification

British Isles Average R3 and R4 Heifer price

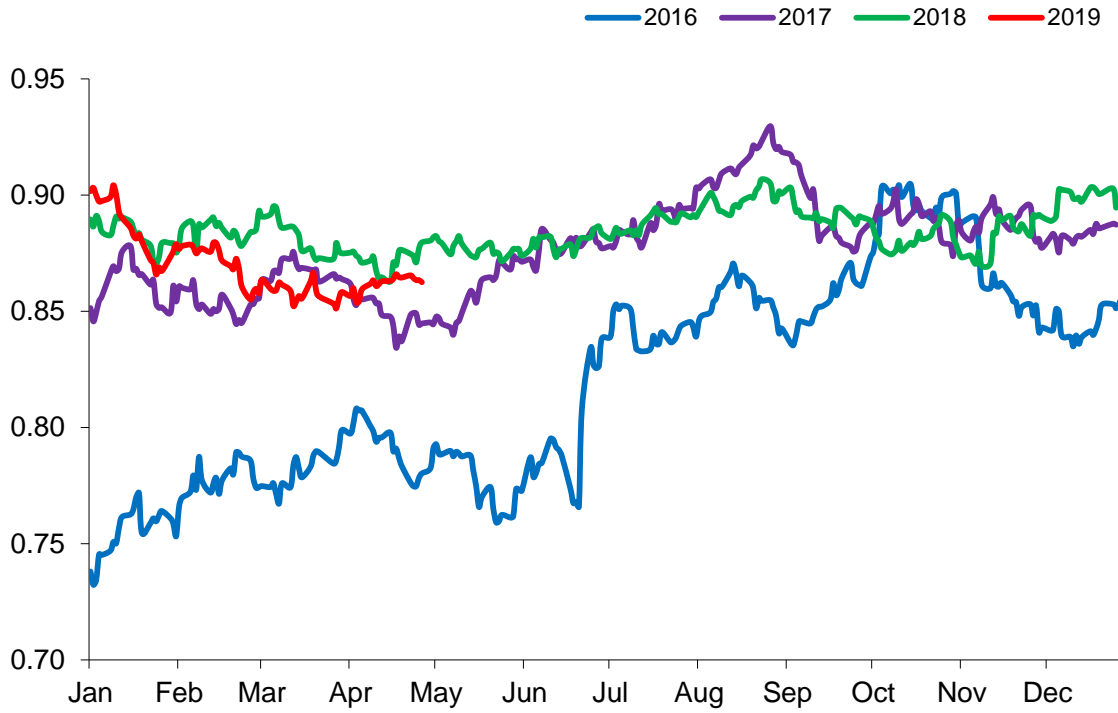
52 Weeks to 27 April 2019



Prices relate to UK Dressing Specification

Exchange Rate £ / Euro

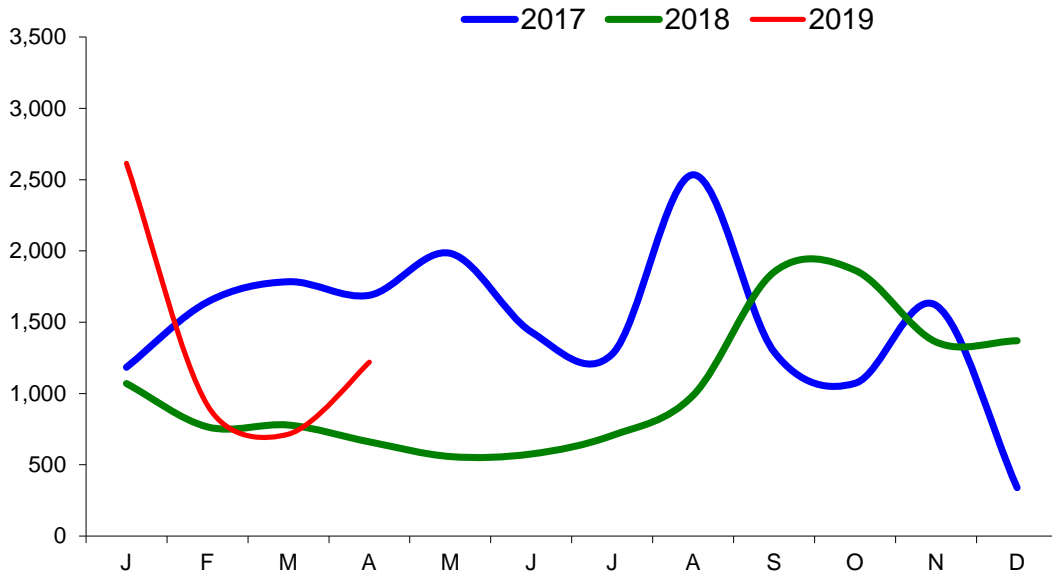
01 January 2016 – 30 April 2019



Imports

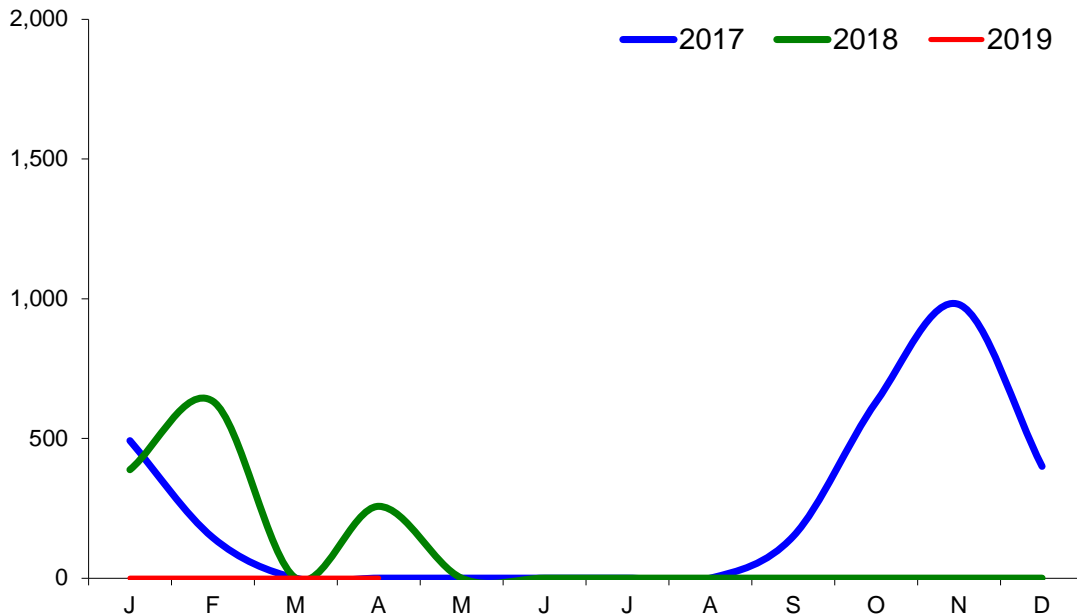
Monthly Live Imports of Cattle into NI for Direct Slaughter

From ROI and GB Combined



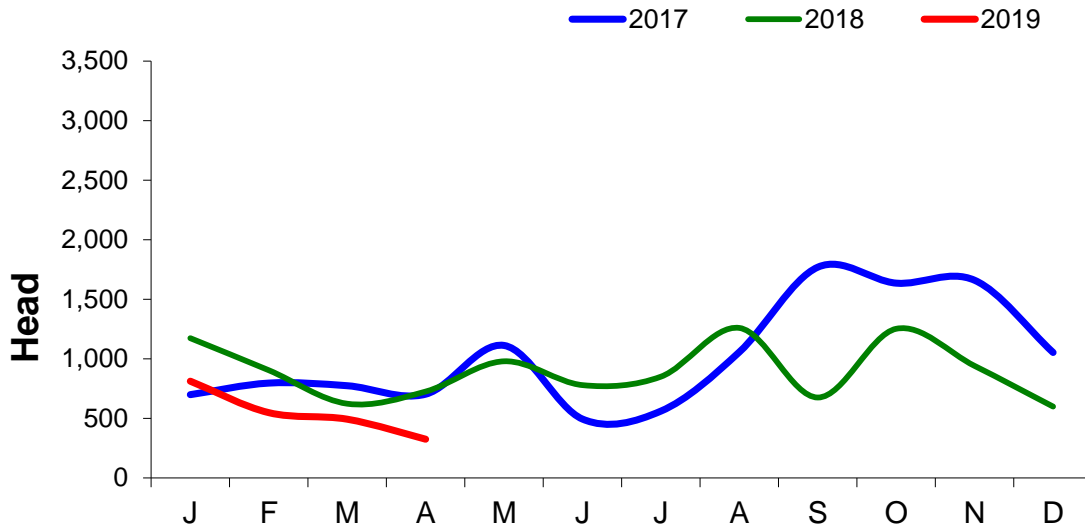
Monthly Live Imports of Sheep into NI for Direct Slaughter

From ROI and GB Combined



Exports

Monthly Live Exports of Cattle from NI into ROI and GB



Monthly Live Exports of Sheep from NI into ROI and GB

