



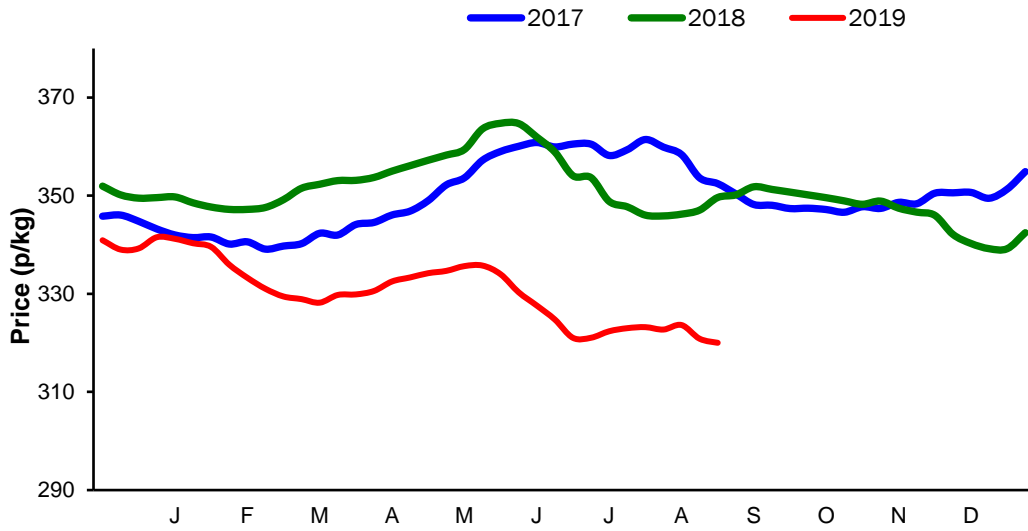
**Monthly Economic Review  
August 2019**

## Contents

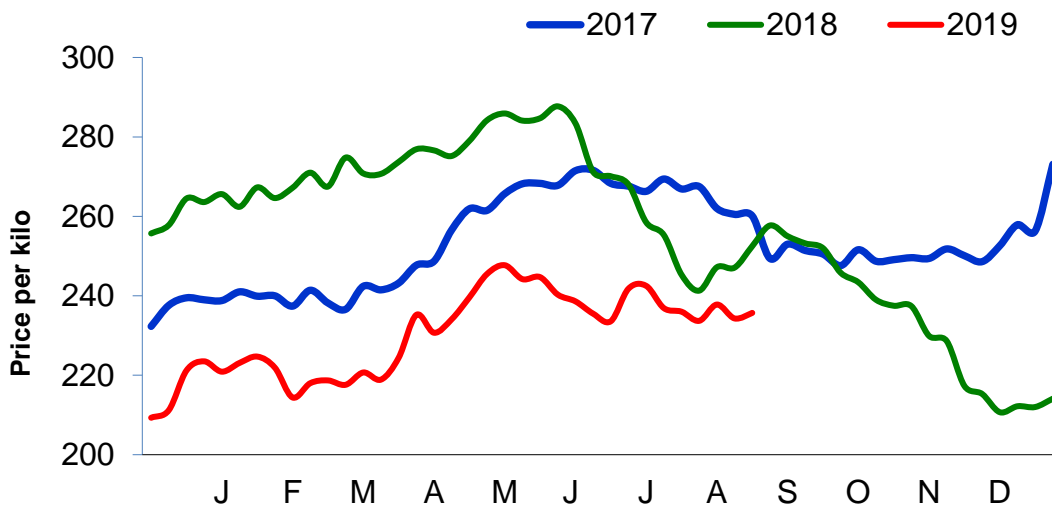
Contents.....	2
Cattle Prices .....	3
Average NI Clean Cattle Price .....	3
Average NI Cow Price.....	3
Cattle Slaughtering.....	4
NI Clean Cattle Slaughtering – Cumulative .....	4
NI Weekly Clean Cattle Slaughtering.....	4
NI Weekly Cow Slaughtering .....	5
Sheep Prices.....	6
Average NI Lamb / Hogget Price .....	6
Sheep Slaughtering.....	7
Cumulative Lamb & Hogget Slaughtering .....	7
Total Weekly Lamb & Hogget Slaughtering .....	7
Total Weekly Ewe and Ram Slaughtering.....	7
Total Carcase Weight Produced for the Food Chain.....	8
Change in Throughput / Production .....	9
Supply and Price.....	10
NI Lamb/Hogget Kill vs. Average Lamb / Hogget Price .....	10
NI Clean Cattle Kill vs. Average Clean Cattle Price.....	10
British Isles Price Comparisons .....	11
UK Average Cow Prices .....	11
Weekly UK Cow Prices .....	11
British Isles R3 Steer Price .....	12
British Isles R4 Steer Price .....	12
British Isles Average R3 and R4 Steer price .....	13
British Isles R3 Heifer Price .....	14
British Isles R4 Heifer Price .....	14
British Isles Average R3 and R4 Heifer price.....	15
Exchange Rate £ / Euro .....	16
Imports.....	17
Monthly Live Imports of Cattle into NI for Direct Slaughter .....	17
Monthly Live Imports of Sheep into NI for Direct Slaughter .....	17
Exports .....	18
Monthly Live Exports of Cattle from NI into RoI and GB.....	18
Monthly live Exports of Sheep from NI into RoI and GB .....	18

Cattle Prices

Average NI Clean Cattle Price

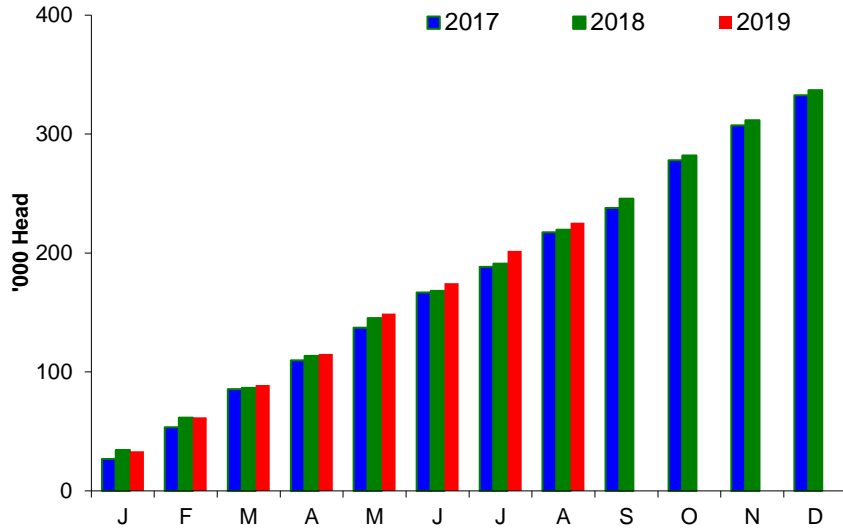


Average NI Cow Price

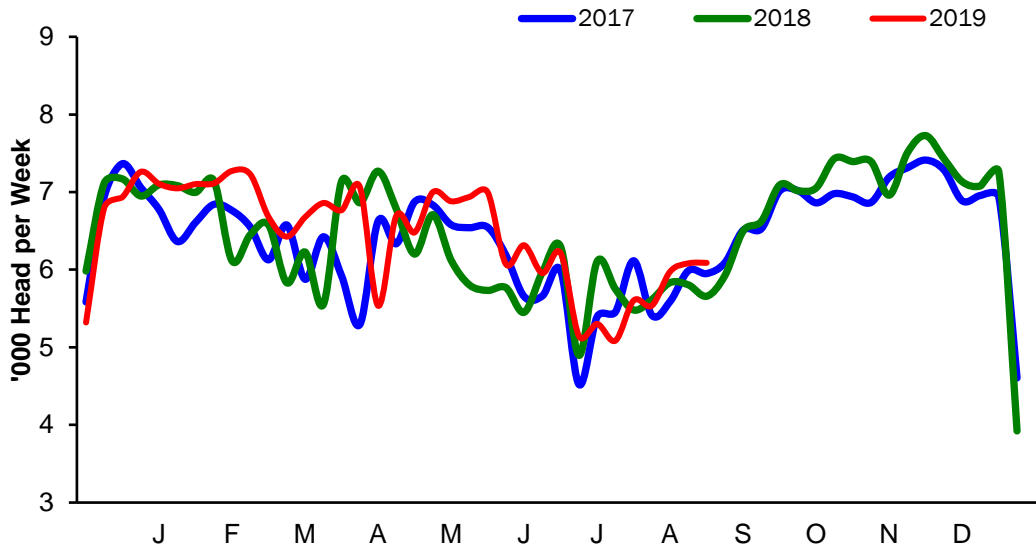


### Cattle Slaughtering

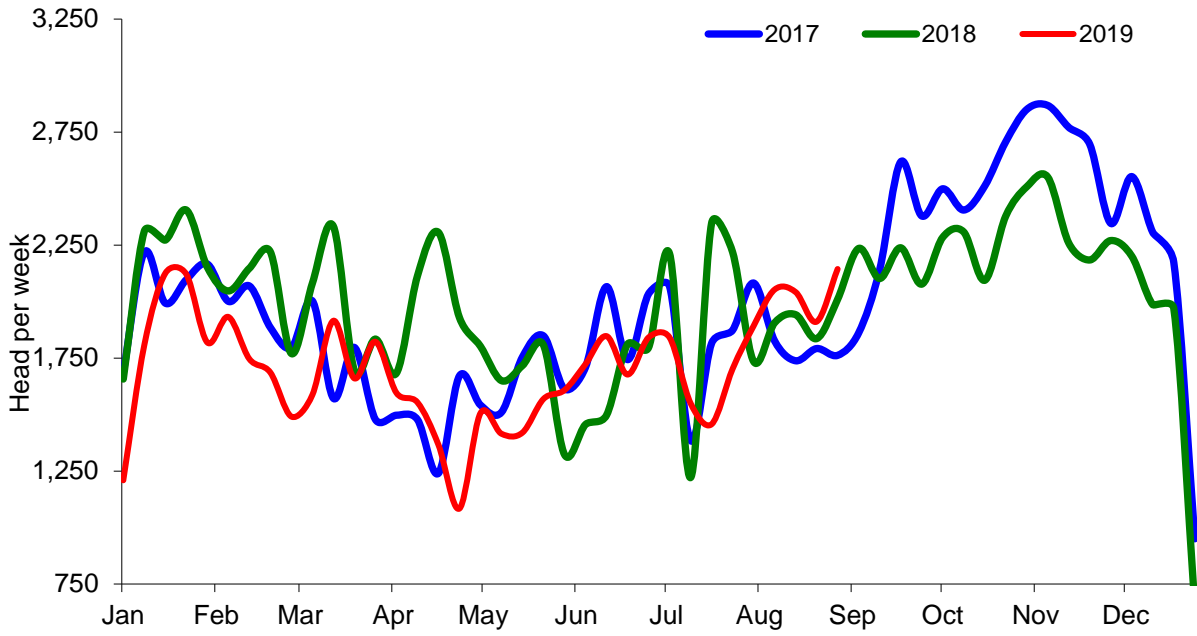
#### NI Clean Cattle Slaughtering – Cumulative



#### NI Weekly Clean Cattle Slaughtering

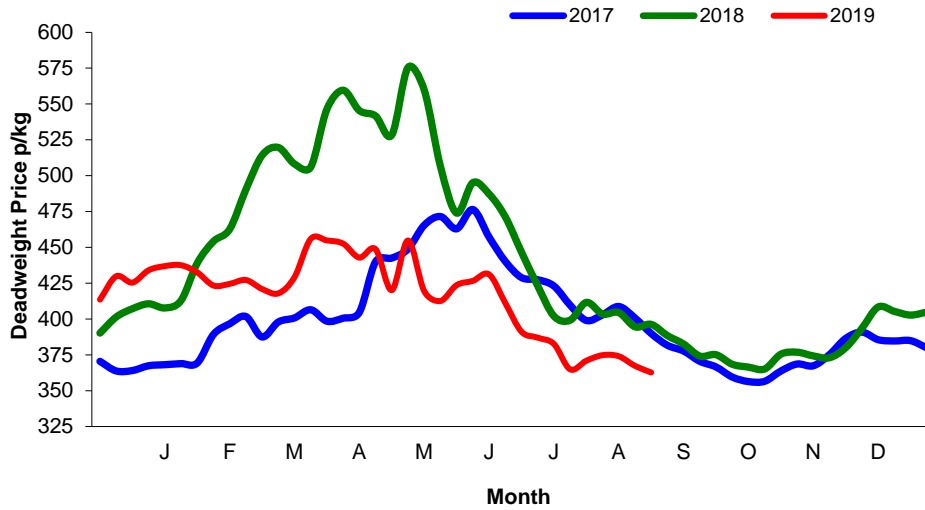


NI Weekly Cow Slaughtering



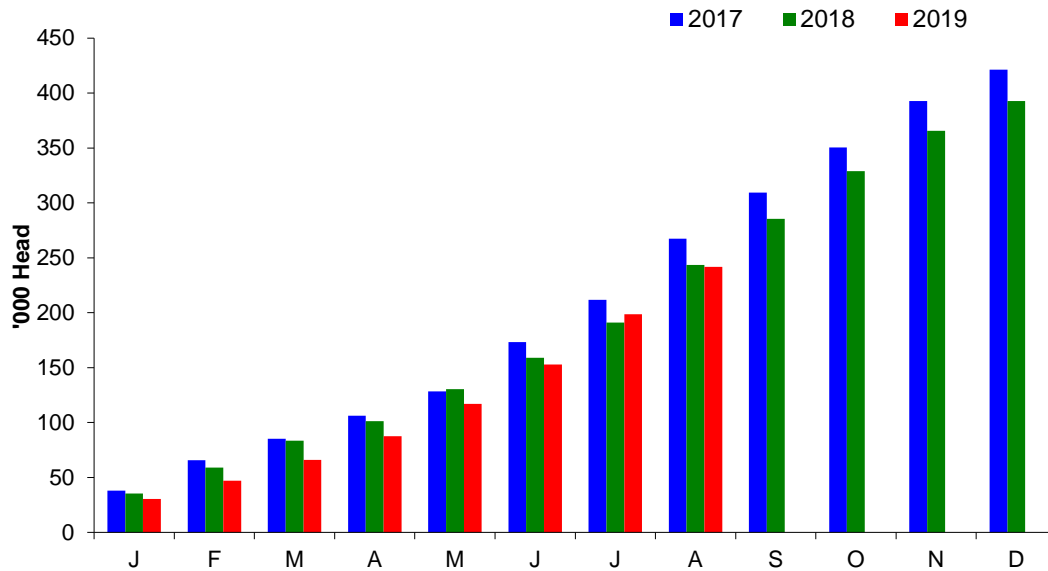
### Sheep Prices

#### Average Deadweight NI Hogget / Lamb Price

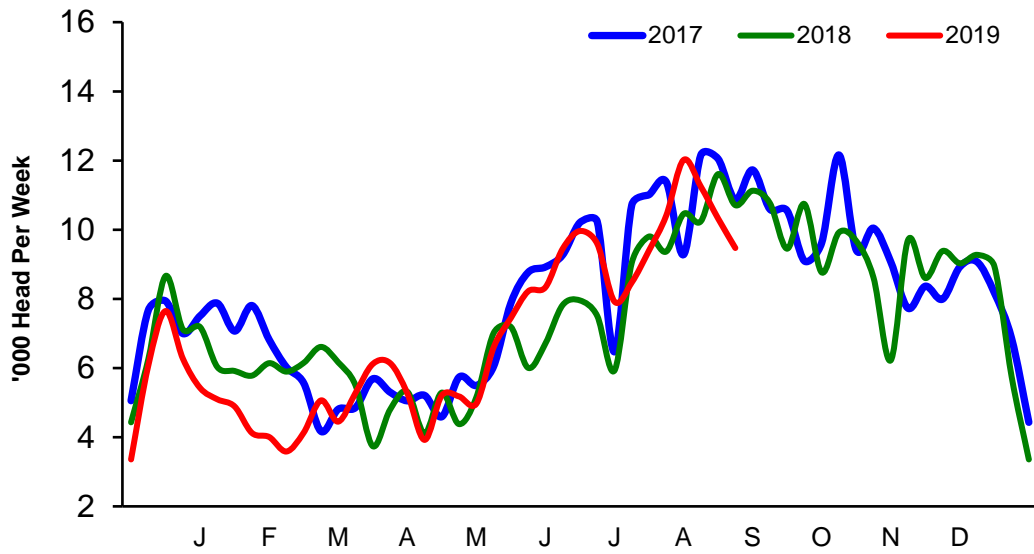


### Sheep Slaughterings

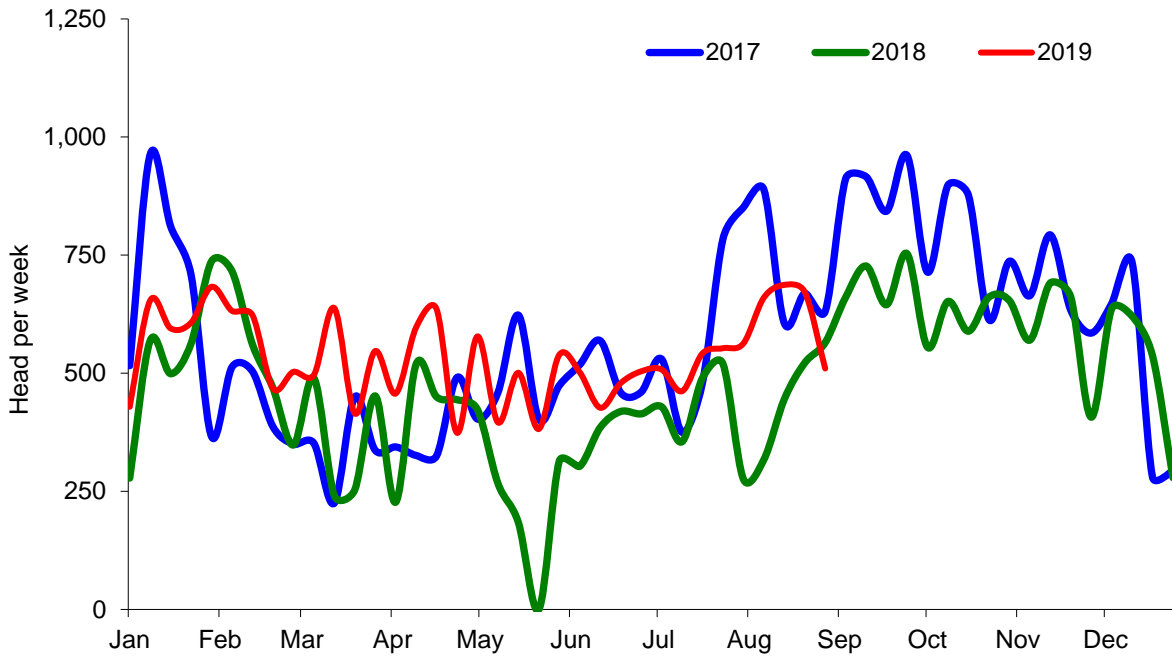
#### Cumulative Lamb & Hogget Slaughterings



### Total Weekly Lamb & Hogget Slaughtering



### Total Weekly Ewe and Ram Slaughtering



**Market Information August 2019**  
**Page 8**

<b>NI CATTLE AND SHEEP SLAUGHTERINGS FOR THE FOODCHAIN</b>						
	<b>August</b>			<b>Year to Date</b>		
	<b>(4 weeks ended 31/08/19)</b>			<b>(35 weeks ended 31/08/19)</b>		
	<b>Aug-18</b>	<b>Aug-19</b>	<b>% Change</b>	<b>2018</b>	<b>2019</b>	<b>Change</b>
<b>CATTLE</b>						
Steers	9,820	11,287	+15%	101,546	102,729	+1%
Heifers	8,494	8,661	+2%	86,127	90,022	+5%
Young Bulls / Calves	4,599	3,736	-19%	31,866	32,811	+3%
<b>Total Prime Cattle</b>	<b>22,913</b>	<b>23,684</b>	<b>+3%</b>	<b>219,539</b>	<b>225,562</b>	<b>+3%</b>
Calves	501	553	+10%	4,038	3,872	-4%
Cows	7,694	8,150	+6%	67,241	59,718	-11%
Mature Bulls	441	427	-3%	2,941	3,514	+19%
<b>Total Cattle</b>	<b>31,549</b>	<b>32,814</b>	<b>+4%</b>	<b>293,759</b>	<b>292,666</b>	<b>-0%</b>
<b>SHEEP</b>						
Lambs & Hoggets	43,012	43,057	+0%	243,535	241,716	-1%
Ewes & Rams	1,849	2,529	+37%	14,444	18,819	+30%
<b>Total Sheep</b>	<b>44,861</b>	<b>45,586</b>	<b>+2%</b>	<b>257,979</b>	<b>260,535</b>	<b>+1%</b>
The above figures are provisional; any amendments will be incorporated in the cumulative data (source DAERA).						

<b>NI BEEF AND SHEEPMEAT PRODUCTION - FOODCHAIN</b>						
	<b>August</b>			<b>Year to Date</b>		
	<b>(4 weeks ended 31/08/19)</b>			<b>(35 weeks ended 31/08/19)</b>		
	<b>Aug-18</b>	<b>Aug-19</b>	<b>% Change</b>	<b>2018</b>	<b>2019</b>	<b>Change</b>
<b>BEEF</b>						
Steers	3,424	4,095	+20%	35,652	36,996	+4%
Heifers	2,640	2,795	+6%	27,141	29,057	+7%
Young Bulls	1,574	1,325	-16%	10,718	11,302	+5%
<b>Total Prime Beef</b>	<b>7,638</b>	<b>8,216</b>	<b>+8%</b>	<b>73,511</b>	<b>77,356</b>	<b>+5%</b>
Calves	100	116	+15%	777	820	+6%
Cows	2,267	2,534	+12%	20,205	18,489	-8%
Mature Bulls	183	200	+9%	1,244	1,519	+22%
<b>Total Beef</b>	<b>10,188</b>	<b>11,066</b>	<b>+9%</b>	<b>95,737</b>	<b>98,185</b>	<b>+3%</b>
<b>SHEEPMEAT</b>						
Lambs & Hoggets	907	921	+2%	5,185	5,367	+4%
Ewes & Rams	52	72	+40%	400	562	+40%
<b>Total Sheepmeat</b>	<b>959</b>	<b>993</b>	<b>+4%</b>	<b>5,585</b>	<b>5,929</b>	<b>+6%</b>
The above figures are provisional; any amendments will be incorporated in the cumulative data (source DAERA).						



**Market Information August 2019**  
**Page 9**

**Total Carcase Weight Produced for the Food Chain**  
**Year-to-Date (tonnes – t.)**

Month	Prime Cattle		Cows & Bulls		Lambs/Hoggets		Ewes & Rams	
	2018	2019	2018	2019	2018	2019	2018	2019
January	11,543	11,378	3,406	2,966	764	698	73	87
February	9,194	9,808	2,560	2,249	515	381	53	65
March	8,351	9,243	2,484	2,257	534	440	40	61
April	8,922	8,934	2,510	1,841	387	508	47	63
May	10,581	11,691	2,665	2,646	613	677	35	76
June	7,694	8,757	2,175	2,423	595	759	43	60
July	9,588	9,327	3,200	2,892	870	982	59	77
August	7,638	8,216	2,449	2,734	907	921	52	72
September								
October								
November								
December								
<b>Total</b>	<b>73,511</b>	<b>77,354</b>	<b>21,449</b>	<b>20,008</b>	<b>5,185</b>	<b>5,366</b>	<b>402</b>	<b>561</b>
<b>Change (t.)</b>	<b>3,843</b>		<b>-1,440</b>		<b>181</b>		<b>160</b>	
<b>% Change</b>	<b>5.23%</b>		<b>-6.71%</b>		<b>3.49%</b>		<b>39.81%</b>	

*\*excludes calves*

**Change in Throughput / Production**

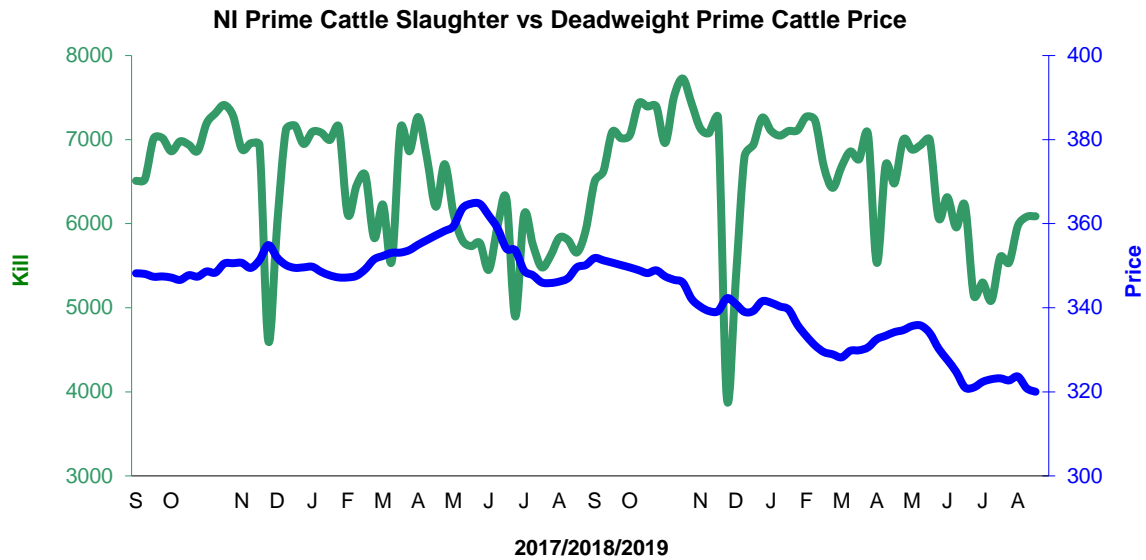
**Last 4 weeks 2018/2019**

**Change in Throughput / Production 2018/2019**

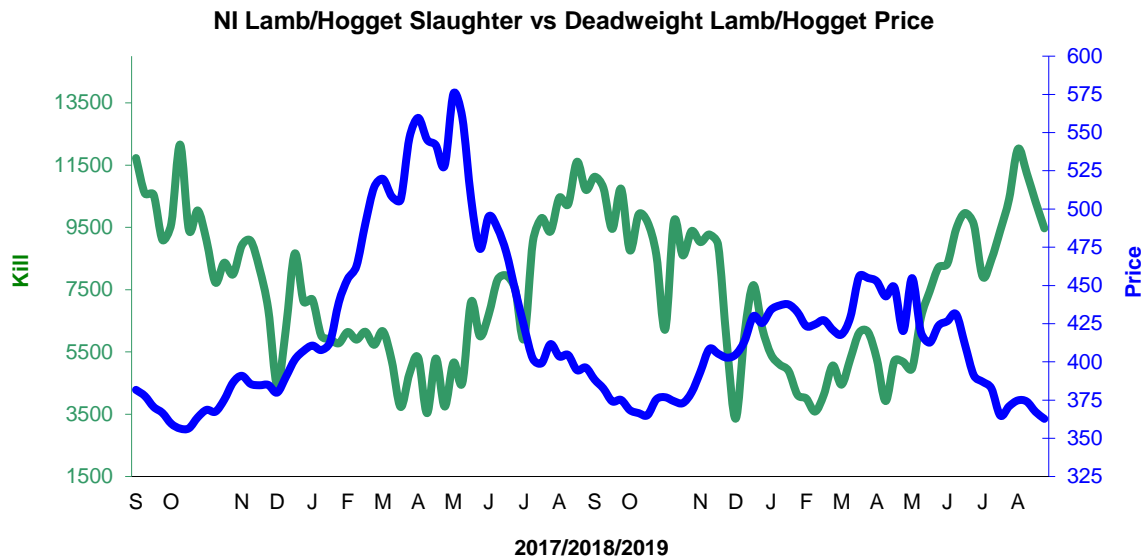
August			
2018/2019	Number	Tonnage	ACW Kg
Prime	3.4%	7.6%	13.33
Cows	5.9%	11.8%	16.40
<b>Total</b>	<b>4.0%</b>	<b>8.6%</b>	<b>14.11</b>
Lamb	0.1%	1.5%	0.30
Ewes and Rams	36.8%	39.9%	0.62
<b>Total Sheep</b>	<b>1.6%</b>	<b>3.6%</b>	<b>0.40</b>

**Supply and Price**

**NI Clean Cattle Kill vs. Average Clean Cattle Price**



**NI Lamb/Hogget Kill vs. Average Lamb / Hogget Price**

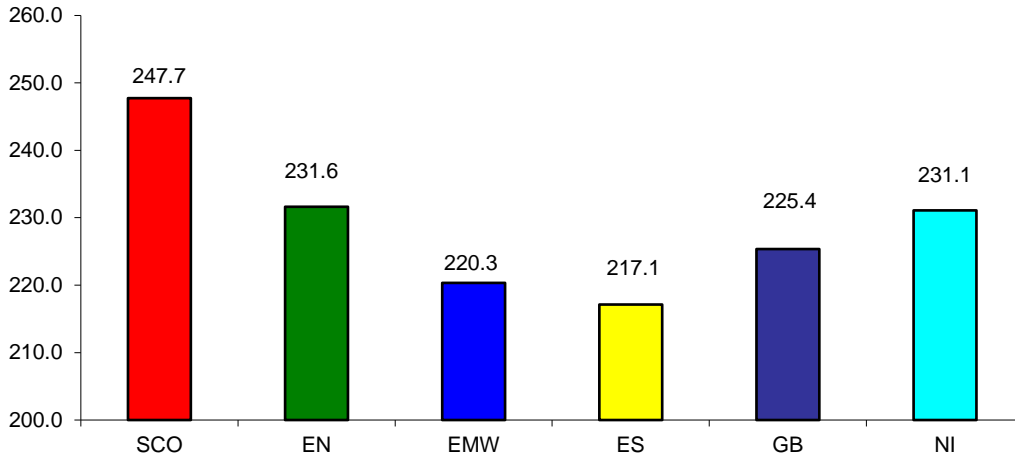


Green	Supply (Kill)
Blue	Price

**BRITISH ISLES COMPARISONS**

**UK Average Cow Prices**

**52 Weeks to 31 August 2019**

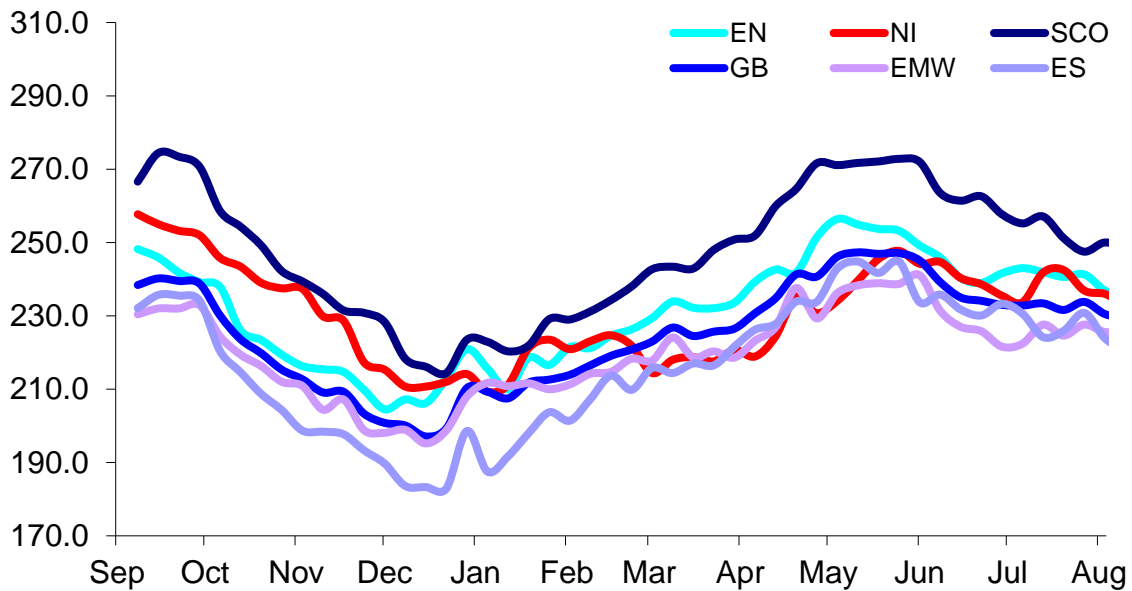


SCO	Scotland
EN	England North
EMW	England Midlands and Wales
ES	England South
NI	Northern Ireland
GB	Great Britain

Prices relate to UK Dressing Specification

**Weekly UK Cow Prices**

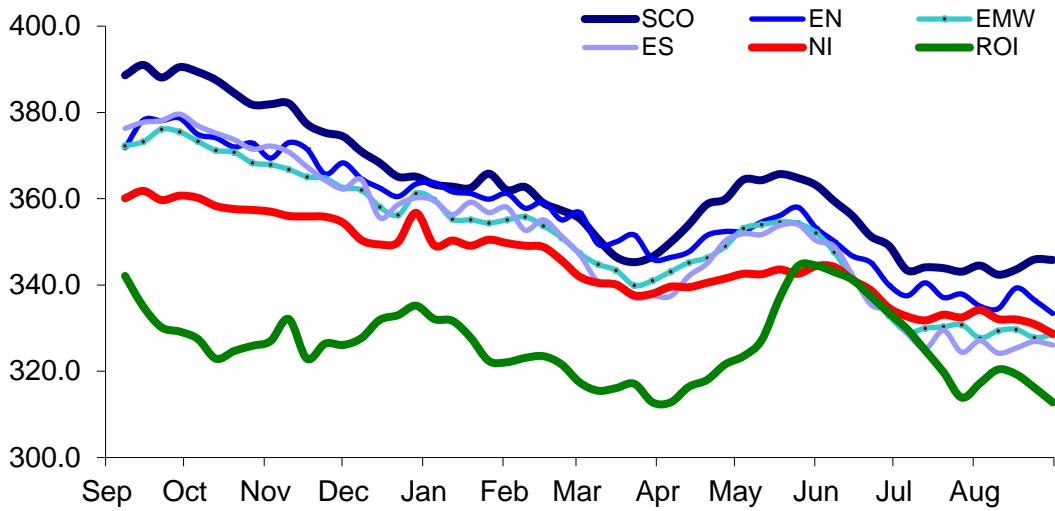
**52 Weeks to 31 August 2019**



Prices relate to UK Dressing Specification

British Isles R3 Steer Price

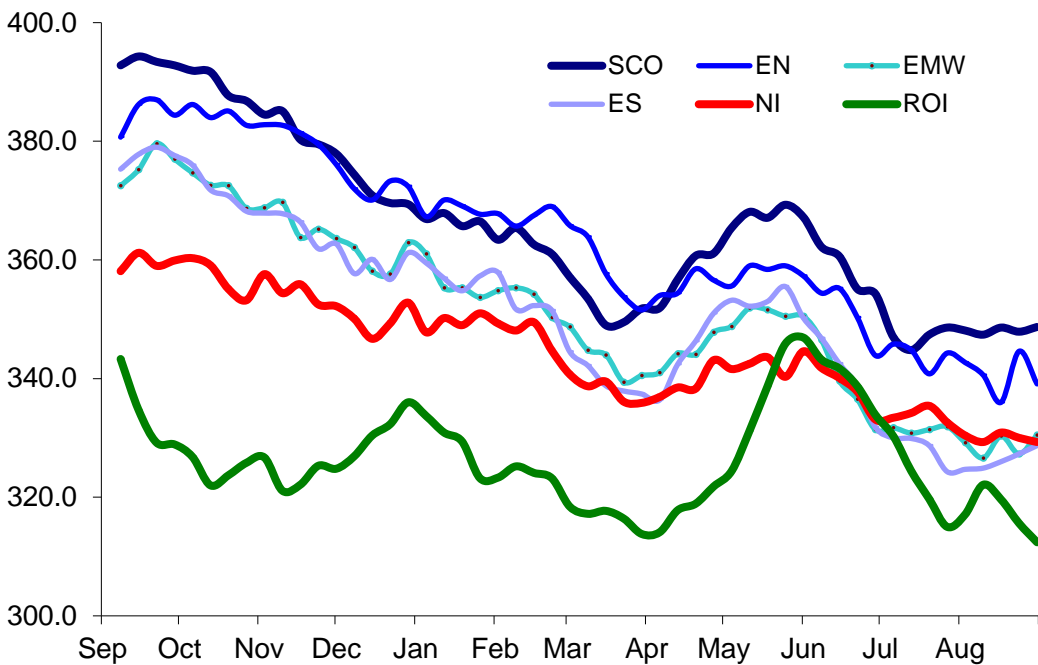
52 Weeks to 31 August 2019



Prices relate to UK Dressing Specification

British Isles R4 Steer Price

52 Weeks to 31 August 2019

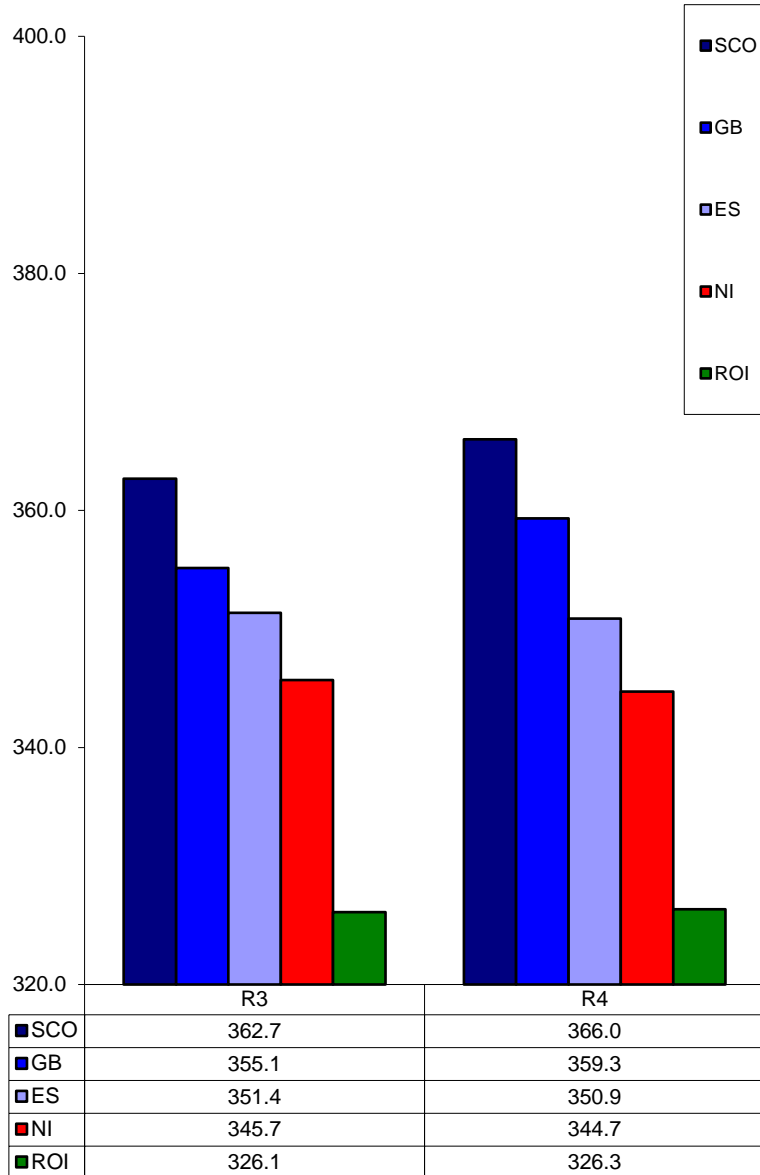


Prices relate to UK Dressing Specification

**Market Information August 2019**  
**Page 13**

**British Isles Average R3 and R4 Steer price**

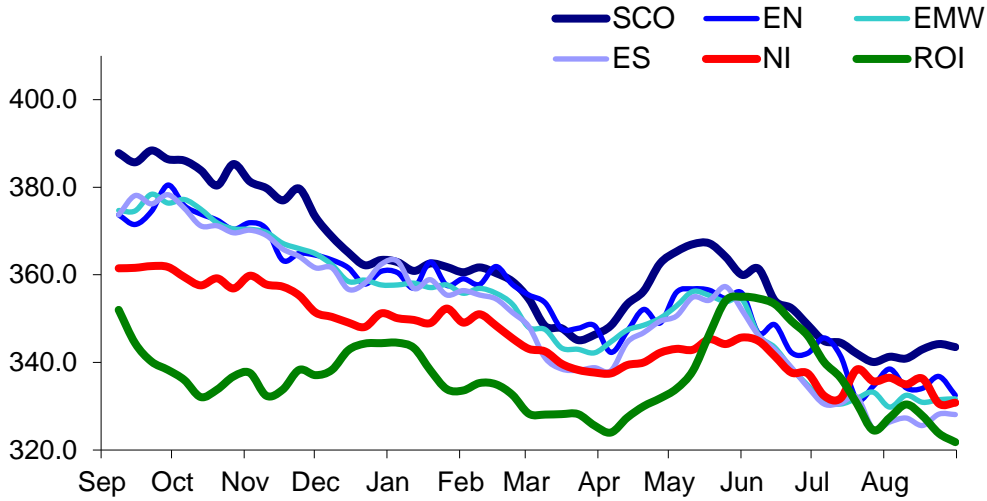
**52 Weeks to 31 August 2019**



Prices relate to UK Dressing Specification

British Isles R3 Heifer Price

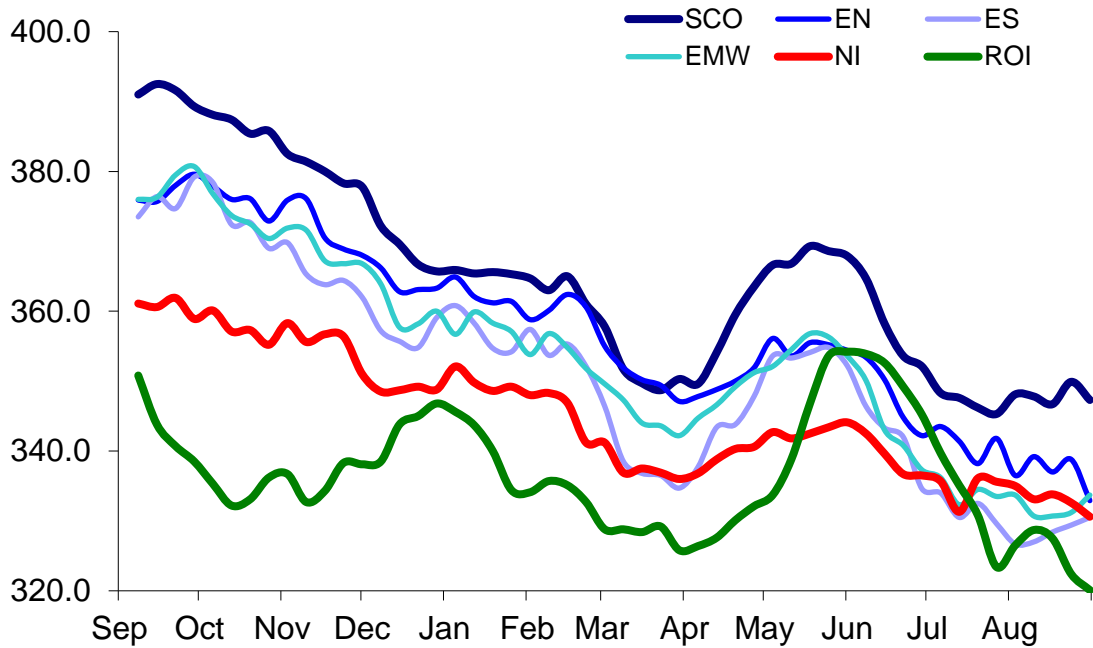
52 Weeks to 31 August 2019



Prices relate to UK Dressing Specification

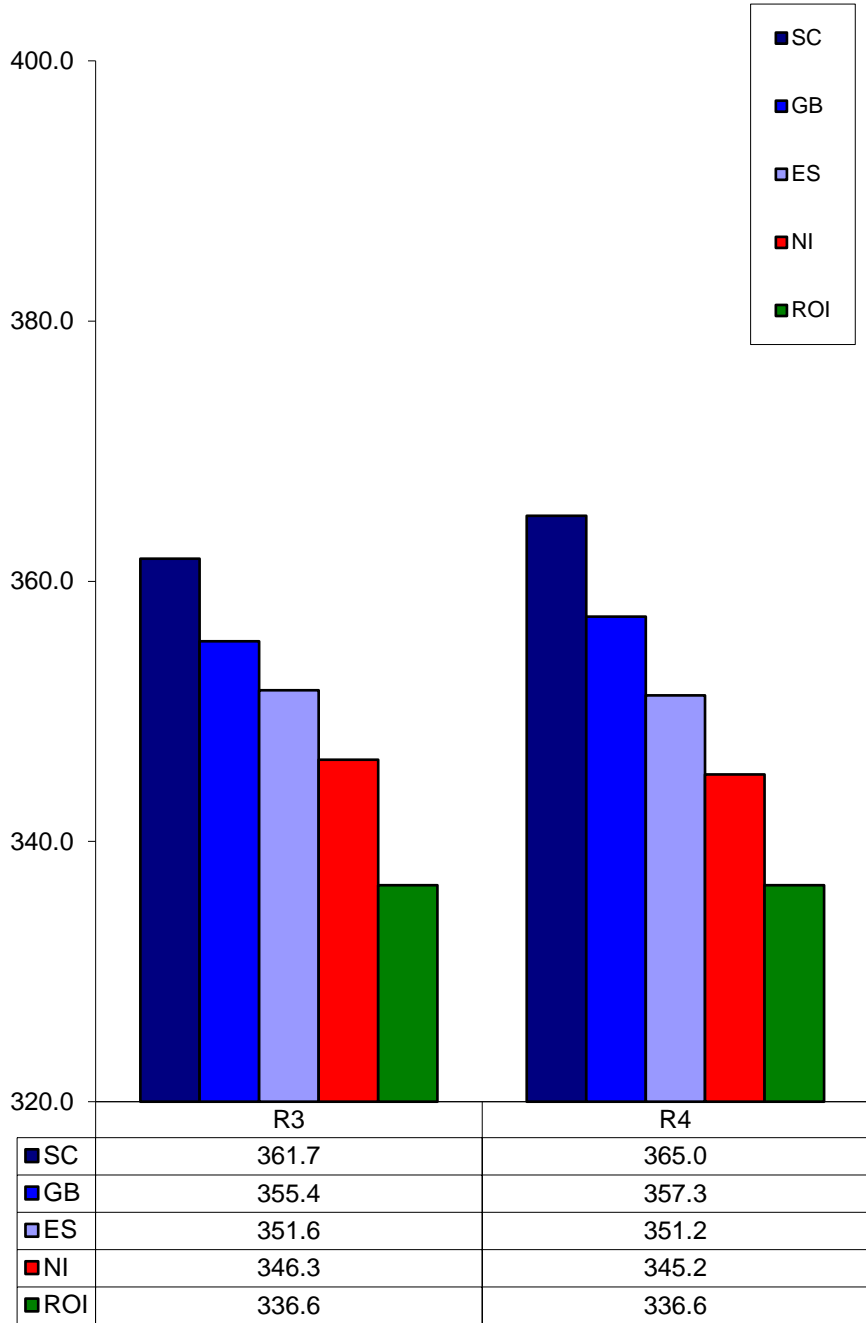
British Isles R4 Heifer Price

52 Weeks to 31 August 2019



Prices relate to UK Dressing Specification

**British Isles Average R3 and R4 Heifer price**  
**52 Weeks to 31 August 2019**

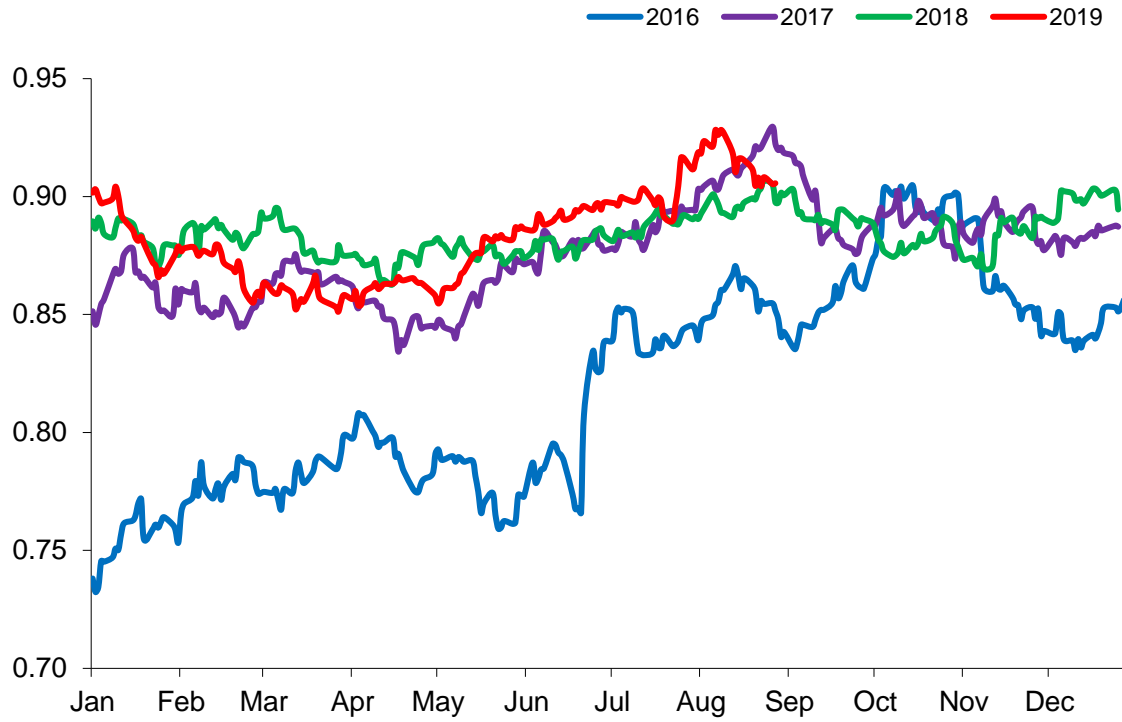


Prices relate to UK Dressing Specification

**Market Information August 2019**  
**Page 16**

**Exchange Rate £ / Euro**

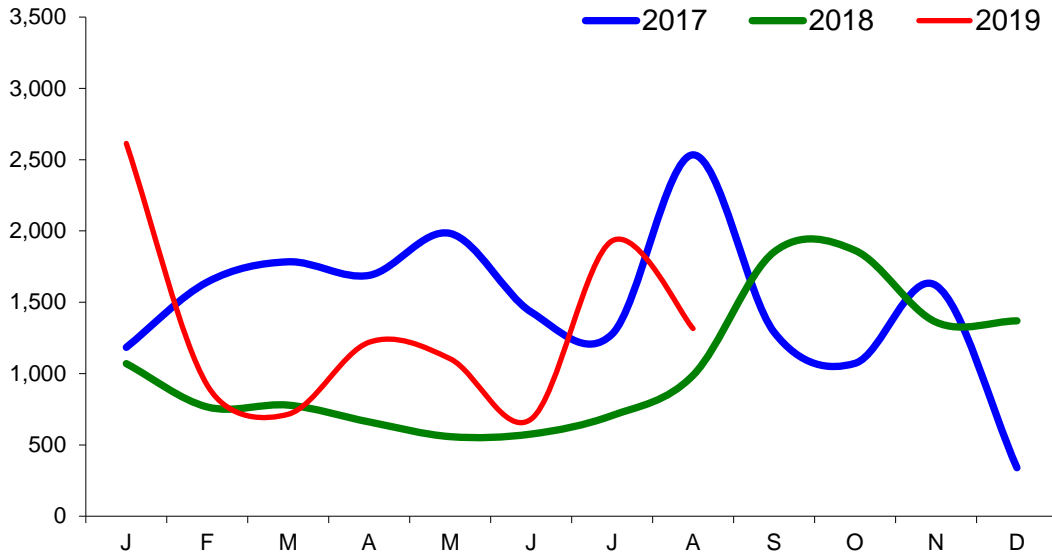
**01 January 2016 – 31 August 2019**



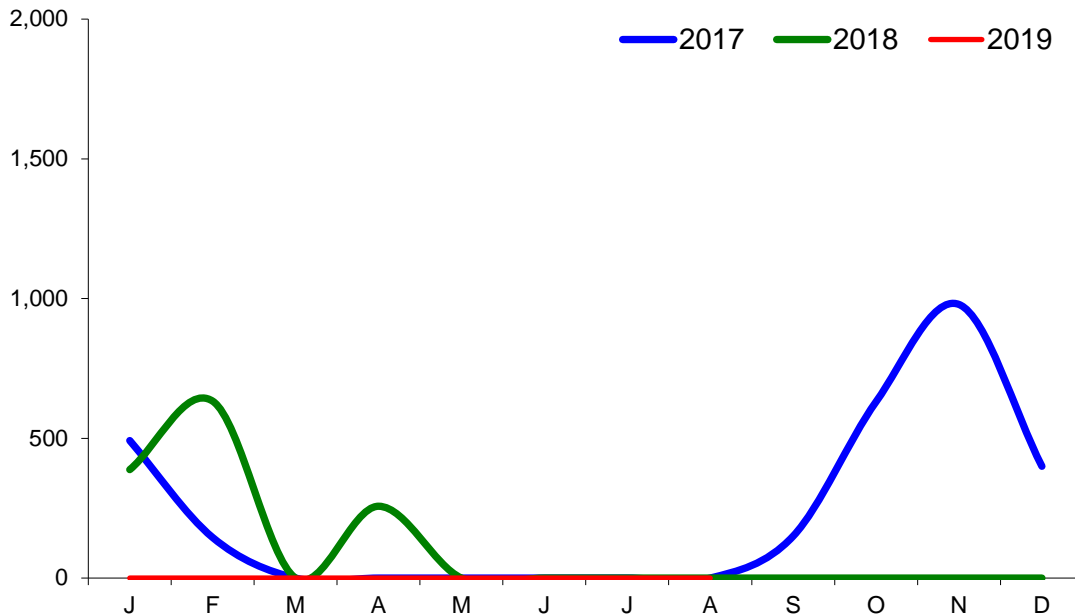


Imports

Monthly Live Imports of Cattle into NI for Direct Slaughter  
From ROI and GB Combined

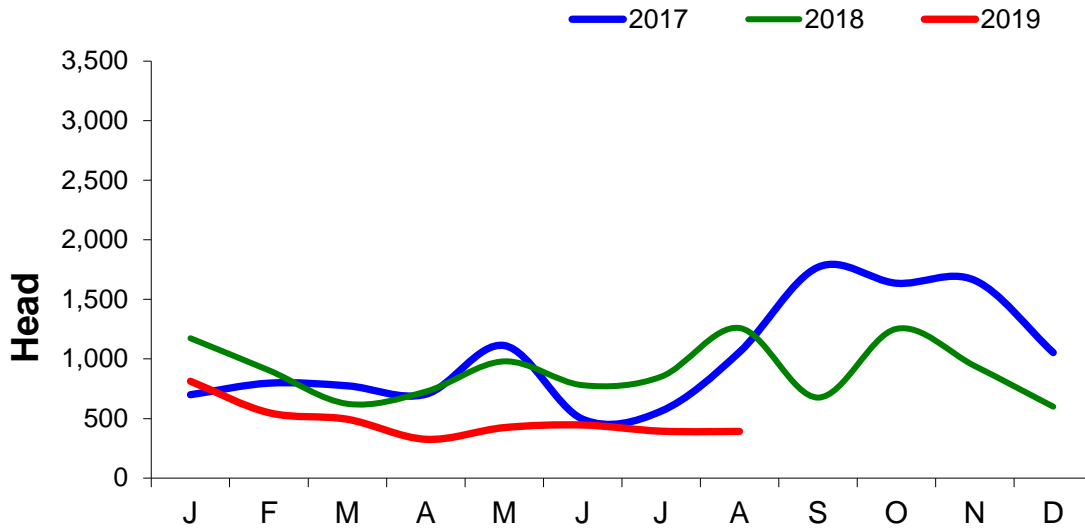


Monthly Live Imports of Sheep into NI for Direct Slaughter  
From ROI and GB Combined



Exports

Monthly Live Exports of Cattle from NI into ROI and GB



Monthly Live Exports of Sheep from NI into ROI and GB

