

**Title: Cattle for beef production on NI farms 31 August 2020**

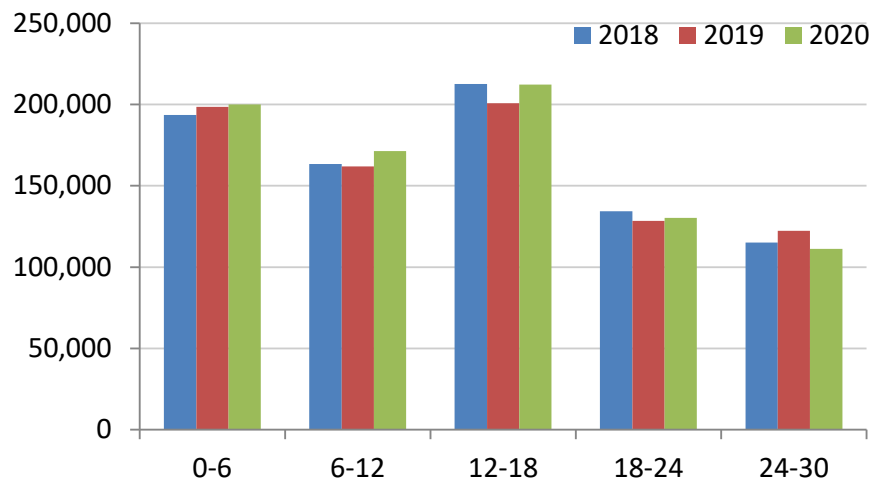
Source: Livestock and Meat Commission  
 Date: 04 September 2020  
 Contact: bulletin@lmcni.com  
 Website: www.lmcni.com



**Total cattle for beef production**

Age (months)	2018	2019	2020	2019/2020	2018/2020
0-6	193,641	198,508	200,089	+0.8%	+3.3%
6-12	163,491	161,883	171,312	+5.8%	+4.8%
12-18	212,732	200,771	212,244	+5.7%	-0.2%
18-24	134,333	128,413	130,297	+1.5%	-3.0%
24-30	115,011	122,251	111,231	-9.0%	-3.3%
30 +	310,626	290,020	288,038	-0.7%	-7.3%

**Total cattle for beef production**



**Beef sired male cattle for beef production**

Age (months)	2018	2019	2020	2019/2020	2018/2020
0-6	92,763	94,885	94,593	-0.3%	+2.0%
6-12	71,153	69,590	74,372	+6.9%	+4.5%
12-18	97,815	92,773	98,459	+6.1%	+0.7%
18-24	54,889	51,784	53,242	+2.8%	-3.0%
24-30	44,265	47,058	40,180	-14.6%	-9.2%
30 +	20,501	16,115	15,894	-1.4%	-22.5%

**Dairy sired male cattle for beef production**

Age (months)	2018	2019	2020	2019/2020	2018/2020
0-6	12,264	12,897	13,562	+5.2%	+10.6%
6-12	23,038	24,567	24,707	+0.6%	+7.2%
12-18	12,168	11,205	12,911	+15.2%	+6.1%
18-24	13,442	12,662	14,432	+14.0%	+7.4%
24-30	6,120	6,004	5,488	-8.6%	-10.3%
30+	6,685	3,164	2,724	-13.9%	-59.3%

**Beef sired female cattle for beef production**

Age (months)	2018	2019	2020	2019/2020	2018/2020
0-6	88,614	90,726	91,934	+1.3%	+3.7%
6-12	69,300	67,726	72,233	+6.7%	+4.2%
12-18	102,749	96,793	100,874	+4.2%	-1.8%
18-24	66,002	63,967	62,623	-2.1%	-5.1%
24-30	64,626	69,189	65,563	-5.2%	+1.4%
30 +	283,440	270,741	269,420	-0.5%	-4.9%

LMC does not guarantee the accuracy or completeness of any third party information provided in or included with this publication.

LMC hereby disclaims any responsibility for error, omission or inaccuracy in the information, misinterpretation or any other loss, disappointment, negligence or damage caused by reliance on third party information.