

## Title: Prime Cattle Conformation and Fat Class Report Q2 2020

Source: Livestock and Meat Commission

Date: 08 July 2020

Contact: bulletin@lmcni.com

Website: www.lmcni.com



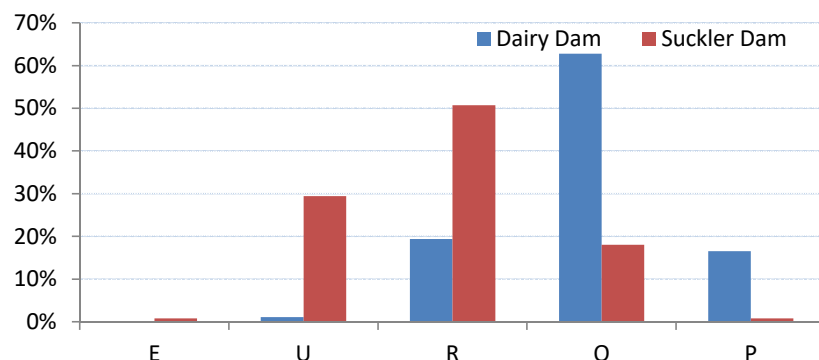
### Proportion of total prime cattle by grade (5 point scale)

	1	2	3	4	5
E	0%	0%	0%	0%	0%
U	0%	4%	9%	4%	0%
R	0%	5%	19%	12%	1%
O	0%	6%	19%	11%	0%
P	1%	3%	3%	1%	0%

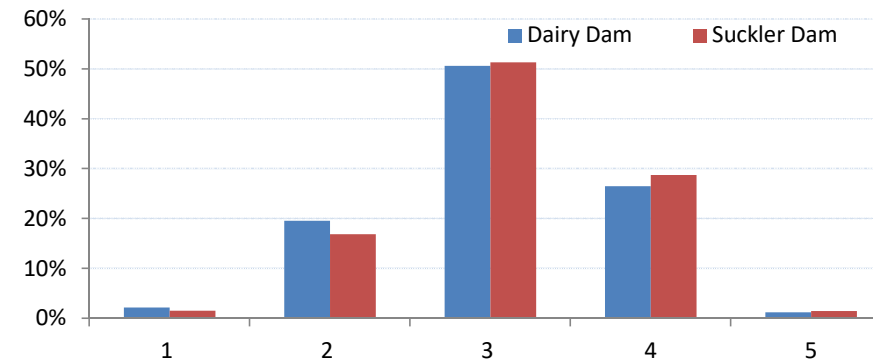
### Source of prime cattle during Q2 2020 vs Q2 2019

	2019	2020
Suckler	59%	57%
Beef Cross	30%	30%
Dairy Sired	11%	12%

### Conformation scores of prime cattle by source Q2 2020



### Fat class of prime cattle by source Q2 2020



### Conformation scores of heifers Q2 2020

Year	E	U	R	O	P
2019	0%	16%	45%	34%	5%
2020	0%	16%	43%	36%	6%

### Fat class of heifers Q2 2020

Year	E	U	R	O	P
2019	0%	16%	45%	34%	5%
2020	0%	16%	43%	36%	6%

### Conformation scores of steers Q2 2020

Year	E	U	R	O	P
2019	0%	17%	37%	38%	8%
2020	0%	17%	36%	38%	8%

### Fat class of steers Q2 2020

Year	E	U	R	O	P
2019	0%	17%	37%	38%	8%
2020	0%	17%	36%	38%	8%

### Conformation scores of young bulls Q2 2020

Year	E	U	R	O	P
2019	2%	25%	30%	33%	9%
2020	2%	22%	27%	38%	11%

### Fat class of young bulls Q2 2020

Year	E	U	R	O	P
2019	2%	25%	30%	33%	9%
2020	2%	22%	27%	38%	11%

LMC does not guarantee the accuracy or completeness of any third party information provided in or included with this publication. LMC hereby disclaims any responsibility for error, omission or inaccuracy in the information, misinterpretation or any other loss, disappointment, negligence or damage caused by reliance on third party information.