

Title: Cattle for beef production on NI farms 30 September 2020

Source: Livestock and Meat Commission

Date: 02 October 2020

Contact: bulletin@lmcni.com

Website: www.lmcni.com



Total cattle for beef production

Age (months)	2018	2019	2020	2019/2020	2018/2020
0-6	156,233	163,645	161,899	-1.1%	+3.6%
6-12	196,881	196,495	209,196	+6.5%	+6.3%
12-18	178,191	169,266	179,493	+6.0%	+0.7%
18-24	167,350	158,386	163,176	+3.0%	-2.5%
24-30	108,629	109,537	99,662	-9.0%	-8.3%
30 +	311,766	293,606	291,499	-0.7%	-6.5%

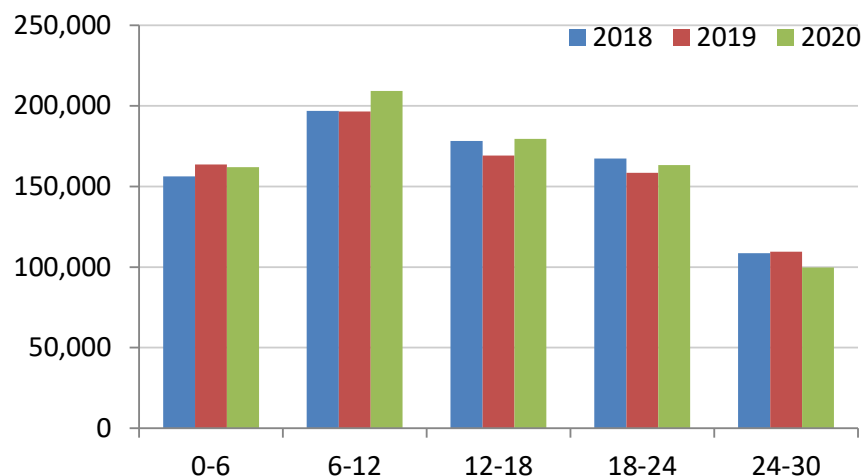
Beef sired male cattle for beef production

Age (months)	2018	2019	2020	2019/2020	2018/2020
0-6	73,212	76,482	75,041	-1.9%	+2.5%
6-12	89,329	87,890	93,805	+6.7%	+5.0%
12-18	80,561	76,565	81,891	+7.0%	+1.7%
18-24	70,249	66,330	68,992	+4.0%	-1.8%
24-30	41,258	40,910	34,861	-14.8%	-15.5%
30 +	21,244	17,232	16,426	-4.7%	-22.7%

Beef sired female cattle for beef production

Age (months)	2018	2019	2020	2019/2020	2018/2020
0-6	70,006	72,506	72,000	-0.7%	+2.8%
6-12	86,555	85,989	92,075	+7.1%	+6.4%
12-18	83,522	79,647	83,139	+4.4%	-0.5%
18-24	84,940	80,544	80,873	+0.4%	-4.8%
24-30	60,262	61,918	58,576	-5.4%	-2.8%
30 +	283,890	273,321	272,365	-0.3%	-4.1%

Total cattle for beef production



Dairy sired male cattle for beef production

Age (months)	2018	2019	2020	2019/2020	2018/2020
0-6	13,015	14,657	14,858	+1.4%	+14.2%
6-12	20,997	22,616	23,316	+3.1%	+11.0%
12-18	14,108	13,054	14,463	+10.8%	+2.5%
18-24	12,161	11,512	13,311	+15.6%	+9.5%
24-30	7,109	6,709	6,225	-7.2%	-12.4%
30+	6,632	3,053	2,708	-11.3%	-59.2%

LMC does not guarantee the accuracy or completeness of any third party information provided in or included with this publication.

LMC hereby disclaims any responsibility for error, omission or inaccuracy in the information, misinterpretation or any other loss, disappointment, negligence or damage caused by reliance on third party information.