

Title: Prime Cattle Conformation and Fat Class Report Q2 2020

Source: Livestock and Meat Commission
 Date: 08 October 2020
 Contact: bulletin@lmcni.com
 Website: www.lmcni.com



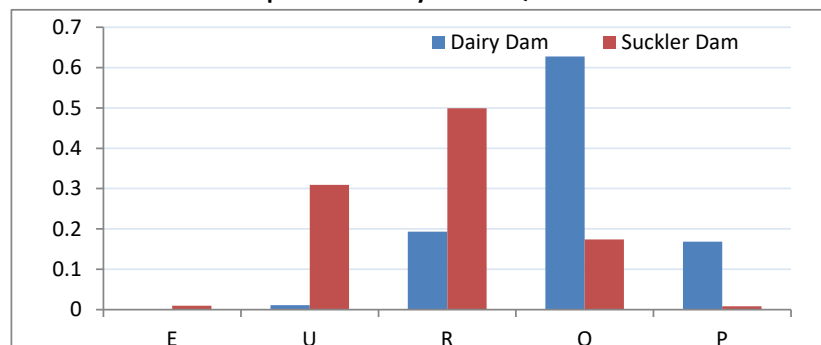
Proportion of total prime cattle by grade (5 point scale)

	1	2	3	4	5
E	0%	0%	0%	0%	0%
U	1%	6%	9%	2%	0%
R	1%	7%	19%	10%	0%
O	1%	7%	19%	9%	0%
P	1%	3%	3%	1%	0%

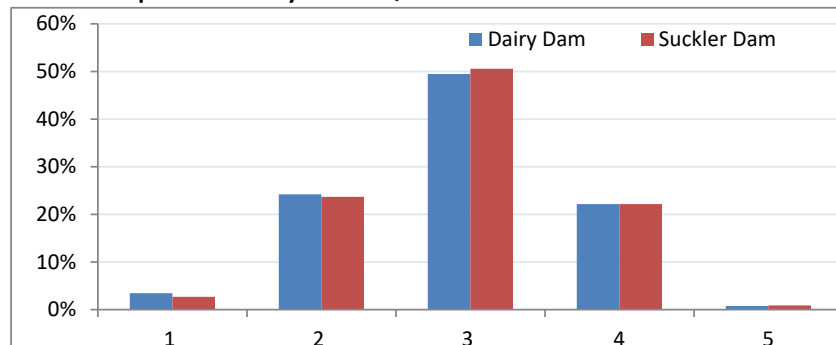
Source of prime cattle during Q3 2020 vs Q3 2019

	2019	2020
Suckler	60%	59%
Beef Cross	29%	30%
Dairy Sired	11%	11%

Conformation scores of prime cattle by source Q3 2020



Fat class of prime cattle by source Q3 2020



Conformation scores of heifers Q3 2020

Year	E	U	R	O	P
2019	0%	14%	43%	37%	6%
2020	0%	17%	43%	36%	5%

Fat class of heifers Q3 2020

Year	1	2	3	4	5
2019	2%	11%	47%	38%	2%
2020	2%	11%	47%	38%	2%

Conformation scores of steers Q3 2020

Year	E	U	R	O	P
2019	0%	18%	36%	37%	10%
2020	0%	18%	35%	38%	9%

Fat class of steers Q3 2020

Year	1	2	3	4	5
2019	3%	25%	56%	16%	0%
2020	3%	25%	56%	16%	0%

Conformation scores of young bulls Q3 2020

Year	E	U	R	O	P
2019	3%	28%	34%	27%	8%
2020	3%	27%	32%	31%	7%

Fat class of young bulls Q3 2020

Year	1	2	3	4	5
2019	9%	56%	33%	2%	0%
2020	7%	56%	35%	2%	0%

LMC does not guarantee the accuracy or completeness of any third party information provided in or included with this publication. LMC hereby disclaims any responsibility for error, omission or inaccuracy in the information, misinterpretation or any other loss, disappointment, negligence or damage caused by reliance on third party information.