

Title: Cattle for beef production on NI farms 31 December 2020

Source: Livestock and Meat Commission

Date: 04 January 2021

Contact: bulletin@lmcni.com

Website: www.lmcni.com



Total cattle for beef production

Age (months)	2018	2019	2020	2019/2020	2018/2020
0-6	105,951	112,371	118,371	+5.3%	+11.7%
6-12	243,862	243,490	255,428	+4.9%	+4.7%
12-18	127,943	127,023	136,636	+7.6%	+6.8%
18-24	205,533	194,899	202,376	+3.8%	-1.5%
24-30	75,800	72,589	69,150	-4.7%	-8.8%
30 +	319,800	302,598	300,524	-0.7%	-6.0%

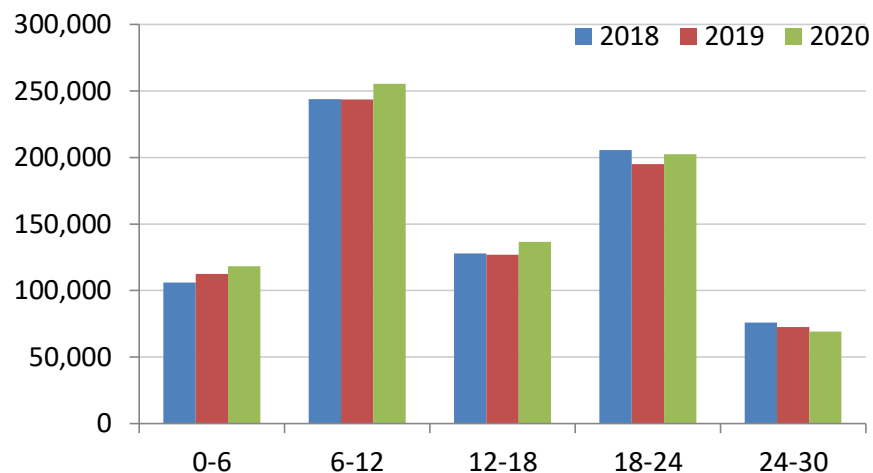
Beef sired male cattle for beef production

Age (months)	2018	2019	2020	2019/2020	2018/2020
0-6	43,849	47,506	49,196	+3.6%	+12.2%
6-12	116,367	115,180	119,766	+4.0%	+2.9%
12-18	54,429	53,978	58,546	+8.5%	+7.6%
18-24	89,377	84,923	88,522	+4.2%	-1.0%
24-30	26,748	25,046	22,813	-8.9%	-14.7%
30 +	24,067	19,672	17,606	-10.5%	-26.8%

Beef sired female cattle for beef production

Age (months)	2018	2019	2020	2019/2020	2018/2020
0-6	42,187	45,038	47,664	+5.8%	+13.0%
6-12	111,967	111,570	117,229	+5.1%	+4.7%
12-18	55,611	54,925	58,807	+7.1%	+5.7%
18-24	107,492	101,513	104,133	+2.6%	-3.1%
24-30	41,237	40,267	38,943	-3.3%	-5.6%
30 +	289,739	280,485	280,854	+0.1%	-3.1%

Total cattle for beef production



Dairy sired male cattle for beef production

Age (months)	2018	2019	2020	2019/2020	2018/2020
0-6	19,915	19,827	21,511	+8.5%	+8.0%
6-12	15,528	16,740	18,433	+10.1%	+18.7%
12-18	17,903	18,120	19,283	+6.4%	+7.7%
18-24	8,664	8,463	9,721	+14.9%	+12.2%
24-30	7,815	7,276	7,394	+1.6%	-5.4%
30+	5,994	2,441	2,064	-15.4%	-65.6%

LMC does not guarantee the accuracy or completeness of any third party information provided in or included with this publication.

LMC hereby disclaims any responsibility for error, omission or inaccuracy in the information, misinterpretation or any other loss, disappointment, negligence or damage caused by reliance on third party information.