

Title: Cattle for beef production on NI farms January 2021

Source: Livestock and Meat Commission
 Date: 01 February 2021
 Contact: bulletin@lmcni.com
 Website: www.lmcni.com



Total cattle for beef production

Age (months)	2019	2020	2021	2020/2021	2019/2021
0-6	112,339	117,272	122,055	+4.1%	+8.6%
6-12	237,592	240,598	247,352	+2.8%	+4.1%
12-18	131,512	131,367	143,438	+9.2%	+9.1%
18-24	197,174	185,279	196,154	+5.9%	-0.5%
24-30	75,565	71,996	70,655	-1.9%	-6.5%
30 +	317,275	300,333	299,005	-0.4%	-5.8%

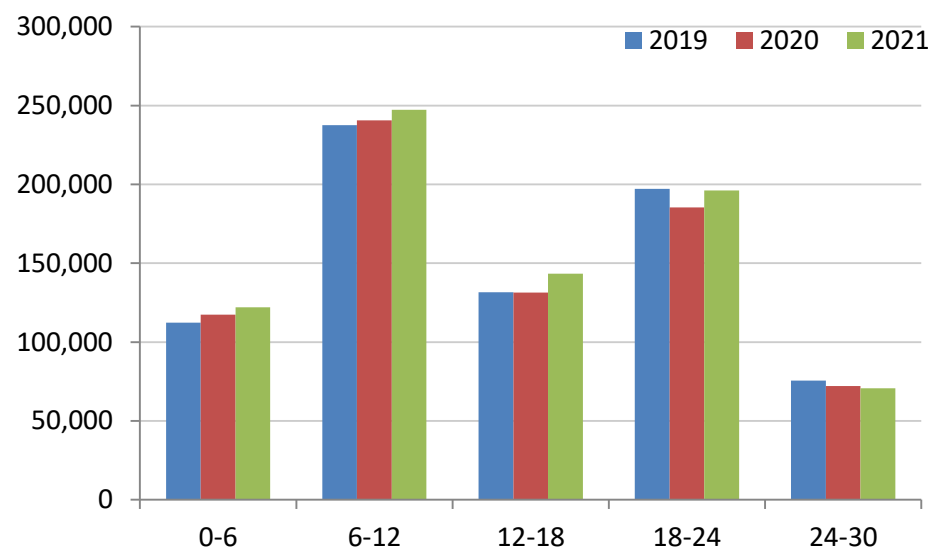
Beef sired male cattle for beef production

Age (months)	2019	2020	2021	2020/2021	2019/2021
0-6	45,882	49,138	50,708	+3.2%	+10.5%
6-12	114,027	114,838	116,706	+1.6%	+2.3%
12-18	55,784	55,278	60,736	+9.9%	+8.9%
18-24	85,866	80,858	86,080	+6.5%	+0.2%
24-30	26,387	24,508	23,161	-5.5%	-12.2%
30 +	23,614	19,040	17,054	-10.4%	-27.8%

Beef sired female cattle for beef production

Age (months)	2019	2020	2021	2020/2021	2019/2021
0-6	44,346	46,910	48,734	+3.9%	+9.9%
6-12	109,495	110,930	114,268	+3.0%	+4.4%
12-18	57,159	56,335	61,357	+8.9%	+7.3%
18-24	103,320	96,692	101,289	+4.8%	-2.0%
24-30	41,085	39,994	39,302	-1.7%	-4.3%
30 +	287,847	279,049	280,045	+0.4%	-2.7%

Total cattle for beef production



Dairy sired male cattle for beef production

Age (months)	2019	2020	2021	2020/2021	2019/2021
0-6	22,111	21,224	22,613	+6.5%	+2.3%
6-12	14,070	14,830	16,378	+10.4%	+16.4%
12-18	18,569	19,754	21,345	+8.1%	+14.9%
18-24	7,988	7,729	8,785	+13.7%	+10.0%
24-30	8,093	7,494	8,192	+9.3%	+1.2%
30+	5,814	2,244	1,906	-15.1%	-67.2%

LMC does not guarantee the accuracy or completeness of any third party information provided in or included with this publication.

LMC hereby disclaims any responsibility for error, omission or inaccuracy in the information, misinterpretation or any other loss, disappointment, negligence or damage caused by reliance on third party information.