

Title: Cattle for beef production on NI farms June 2021

Source: Livestock and Meat Commission/APHIS data
 Date: 01 July 2021
 Contact: bulletin@lmcni.com
 Website: www.lmcni.com



Total cattle for beef production

Age (months)	2019	2020	2021	2020/2021	2019/2021
0-6	207,768	219,401	250,316	+14.1%	+20.5%
6-12	136,283	143,992	148,818	+3.4%	+9.2%
12-18	231,248	232,544	244,006	+4.9%	+5.5%
18-24	104,817	105,590	110,892	+5.0%	+5.8%
24-30	132,144	123,772	119,291	-3.6%	-9.7%
30 +	291,059	288,518	286,303	-0.8%	-1.6%

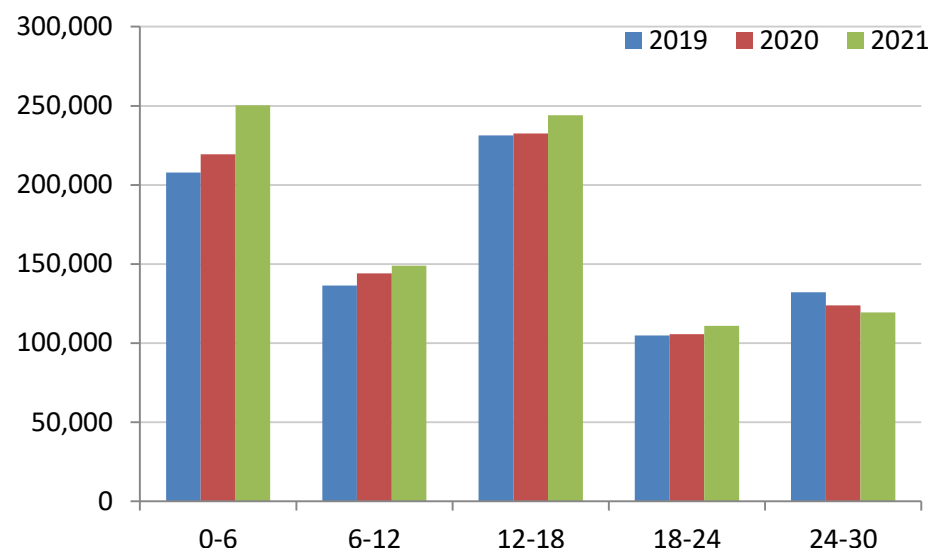
Beef sired male cattle for beef production

Age (months)	2019	2020	2021	2020/2021	2019/2021
0-6	97,426	102,421	115,655	+12.9%	+18.7%
6-12	57,901	61,845	64,034	+3.5%	+10.6%
12-18	108,477	108,858	111,736	+2.6%	+3.0%
18-24	41,855	42,731	45,058	+5.4%	+7.7%
24-30	51,094	46,154	42,507	-7.9%	-16.8%
30 +	15,696	15,606	13,888	-11.0%	-11.5%

Beef sired female cattle for beef production

Age (months)	2019	2020	2021	2020/2021	2019/2021
0-6	94,144	99,872	111,752	+11.9%	+18.7%
6-12	55,888	59,224	62,198	+5.0%	+11.3%
12-18	110,638	110,376	116,044	+5.1%	+4.9%
18-24	50,805	50,043	53,428	+6.8%	+5.2%
24-30	75,310	71,998	70,966	-1.4%	-5.8%
30 +	272,456	270,298	270,302	+0.0%	-0.8%

Total cattle for beef production



Dairy sired male cattle for beef production

Age (months)	2019	2020	2021	2020/2021	2019/2021
0-6	16,198	17,108	22,909	+33.9%	+41.4%
6-12	22,494	22,923	22,586	-1.5%	+0.4%
12-18	12,133	13,310	16,226	+21.9%	+33.7%
18-24	12,157	12,816	12,406	-3.2%	+2.0%
24-30	5,740	5,620	5,818	+3.5%	+1.4%
30+	2,907	2,614	2,113	-19.2%	-27.3%

LMC does not guarantee the accuracy or completeness of any third party information provided in or included with this publication.

LMC hereby disclaims any responsibility for error, omission or inaccuracy in the information, misinterpretation or any other loss, disappointment, negligence or damage caused by reliance on third party information.