

Title: Cattle for beef production on NI farms August 2021

Source: Livestock and Meat Commission/APHIS data
 Date: 03 September 2021
 Contact: bulletin@lmcni.com
 Website: www.lmcni.com



Total cattle for beef production

Age (months)	2019	2020	2021	2020/2021	2019/2021
0-6	198,508	200,089	241,166	+20.5%	+21.5%
6-12	161,883	171,312	163,714	-4.4%	+1.1%
12-18	200,771	212,244	231,948	+9.3%	+15.5%
18-24	128,413	130,297	118,468	-9.1%	-7.7%
24-30	122,251	111,231	115,728	+4.0%	-5.3%
30 +	290,020	288,038	283,697	-1.5%	-2.2%

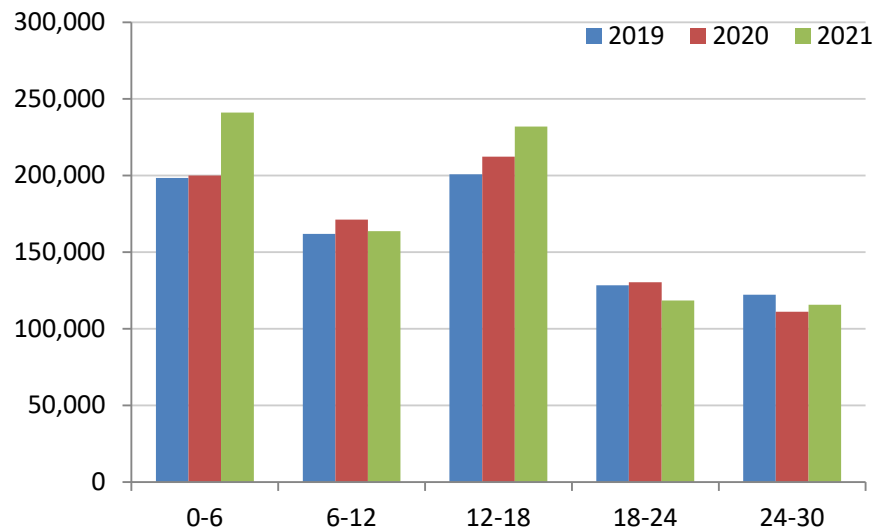
Beef sired male cattle for beef production

Age (months)	2019	2020	2021	2020/2021	2019/2021
0-6	94,885	94,593	114,388	+20.9%	+20.6%
6-12	69,590	74,372	68,583	-7.8%	-1.4%
12-18	92,773	98,459	105,896	+7.6%	+14.1%
18-24	51,784	53,242	46,913	-11.9%	-9.4%
24-30	47,058	40,180	40,788	+1.5%	-13.3%
30 +	16,115	15,894	14,107	-11.2%	-12.5%

Beef sired female cattle for beef production

Age (months)	2019	2020	2021	2020/2021	2019/2021
0-6	90,726	91,934	110,694	+20.4%	+22.0%
6-12	67,726	72,233	66,706	-7.7%	-1.5%
12-18	96,793	100,874	113,142	+12.2%	+16.9%
18-24	63,967	62,623	56,465	-9.8%	-11.7%
24-30	69,189	65,563	69,874	+6.6%	+1.0%
30 +	270,741	269,420	267,303	-0.8%	-1.3%

Total cattle for beef production



Dairy sired male cattle for beef production

Age (months)	2019	2020	2021	2020/2021	2019/2021
0-6	12,897	13,562	16,084	+18.6%	+24.7%
6-12	24,567	24,707	28,425	+15.0%	+15.7%
12-18	11,205	12,911	12,910	-0.0%	+15.2%
18-24	12,662	14,432	15,090	+4.6%	+19.2%
24-30	6,004	5,488	5,066	-7.7%	-15.6%
30+	3,164	2,724	2,287	-16.0%	-27.7%

LMC does not guarantee the accuracy or completeness of any third party information provided in or included with this publication.

LMC hereby disclaims any responsibility for error, omission or inaccuracy in the information, misinterpretation or any other loss, disappointment, negligence or damage caused by reliance on third party information.