

Title: Prime Cattle Conformation and Fat Class Report Quarter 2 2021

Source: Livestock and Meat Commission

Date: 21 July 2021

Contact: bulletin@lmcni.com

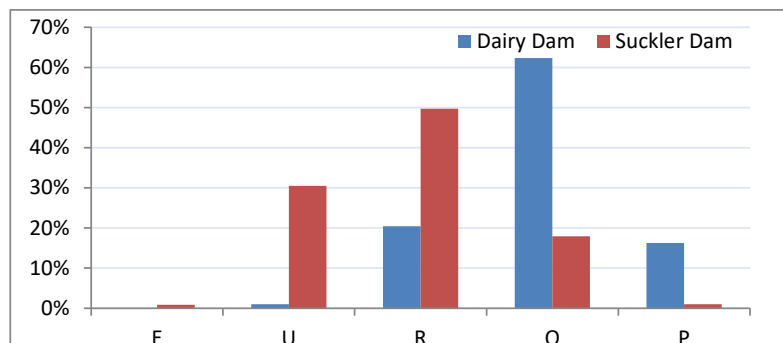
Website: www.lmcni.com



Proportion of total prime cattle by grade (5 point scale)

	1	2	3	4	5
E	0%	0%	0%	0%	0%
U	0%	4%	10%	4%	0%
R	0%	5%	18%	13%	1%
O	0%	5%	19%	12%	1%
P	1%	3%	3%	1%	0%

Conformation scores of prime cattle by source Q2 2021



Conformation scores of heifers Q2 2021

Year	E	U	R	O	P
2020	0%	16%	43%	36%	6%
2021	0%	15%	42%	37%	6%

Conformation scores of steers Q2 2021

Year	E	U	R	O	P
2020	0%	17%	36%	38%	8%
2021	0%	18%	35%	38%	9%

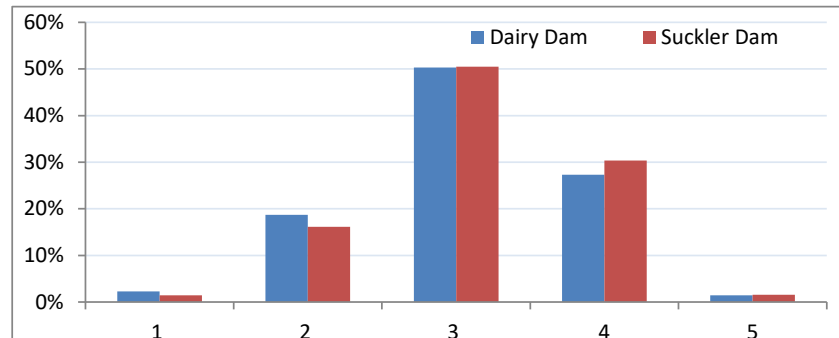
Conformation scores of young bulls Q2 2021

Year	E	U	R	O	P
2020	2%	22%	27%	38%	11%
2021	2%	25%	31%	33%	9%

Source of prime cattle during Q2 2020 vs Q2 2021

	2020	2021
Suckler	57%	56%
Beef Cross	30%	31%
Dairy Sired	12%	12%

Fat class scores of prime cattle by source Q2 2021



Fat class scores of heifers Q2 2021

Year	1	2	3	4	5
2020	1%	8%	43%	45%	3%
2021	1%	7%	41%	47%	4%

Fat class scores of steers Q2 2021

Year	1	2	3	4	5
2020	2%	19%	59%	21%	0%
2021	2%	18%	58%	22%	0%

Fat class scores of young bulls Q2 2021

Year	1	2	3	4	5
2020	4%	45%	46%	4%	0%
2021	5%	43%	47%	5%	0%

LMC does not guarantee the accuracy or completeness of any third party information provided in or included with this publication. LMC hereby disclaims any responsibility for error, omission or inaccuracy in the information, misinterpretation or any other loss, disappointment, negligence or damage caused by reliance on third party information.