

## Title: Cattle for beef production on NI farms September 2021

Source: Livestock and Meat Commission/APHIS data  
 Date: 04 October 2021  
 Contact: bulletin@lmcni.com  
 Website: www.lmcni.com



### Total cattle for beef production

Age (months)	2019	2020	2021	2020/2021	2019/2021
0-6	163,645	161,899	220,089	+35.9%	+34.5%
6-12	196,495	209,196	187,015	-10.6%	-4.8%
12-18	169,266	179,493	211,779	+18.0%	+25.1%
18-24	158,386	163,176	138,280	-15.3%	-12.7%
24-30	109,537	99,662	109,090	+9.5%	-0.4%
30 +	293,606	291,499	283,628	-2.7%	-3.4%

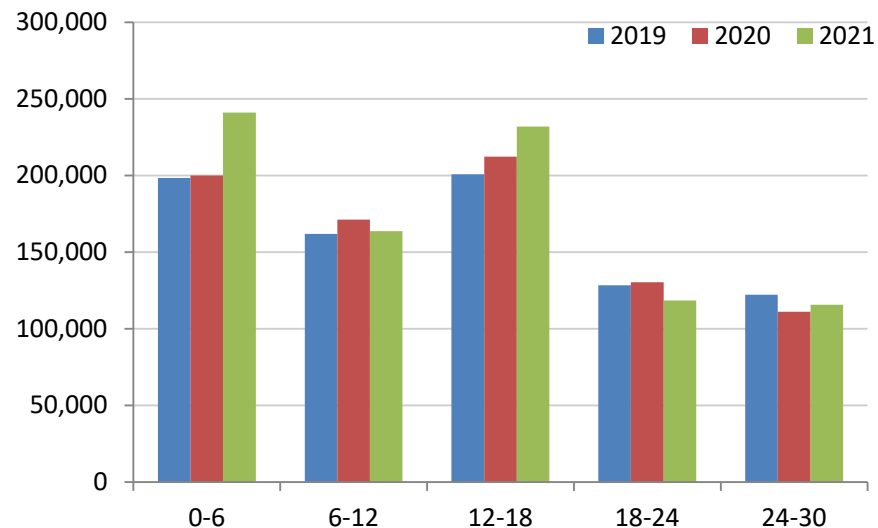
### Beef sired male cattle for beef production

Age (months)	2019	2020	2021	2020/2021	2019/2021
0-6	76,482	75,041	103,845	+38.4%	+35.8%
6-12	87,890	93,805	80,373	-14.3%	-8.6%
12-18	76,565	81,891	95,637	+16.8%	+24.9%
18-24	66,330	68,992	55,893	-19.0%	-15.7%
24-30	40,910	34,861	37,044	+6.3%	-9.5%
30 +	17,232	16,426	14,190	-13.6%	-17.7%

### Beef sired female cattle for beef production

Age (months)	2019	2020	2021	2020/2021	2019/2021
0-6	72,506	72,000	100,090	+39.0%	+38.0%
6-12	85,989	92,075	78,867	-14.3%	-8.3%
12-18	79,647	83,139	102,132	+22.8%	+28.2%
18-24	80,544	80,873	67,600	-16.4%	-16.1%
24-30	61,918	58,576	66,700	+13.9%	+7.7%
30 +	273,321	272,365	267,047	-2.0%	-2.3%

### Total cattle for beef production



### Dairy sired male cattle for beef production

Age (months)	2019	2020	2021	2020/2021	2019/2021
0-6	14,657	14,858	16,154	+8.7%	+10.2%
6-12	22,616	23,316	27,775	+19.1%	+22.8%
12-18	13,054	14,463	14,010	-3.1%	+7.3%
18-24	11,512	13,311	14,787	+11.1%	+28.4%
24-30	6,709	6,225	5,346	-14.1%	-20.3%
30+	3,053	2,708	2,391	-11.7%	-21.7%

LMC does not guarantee the accuracy or completeness of any third party information provided in or included with this publication.

LMC hereby disclaims any responsibility for error, omission or inaccuracy in the information, misinterpretation or any other loss, disappointment, negligence or damage caused by reliance on third party information.