

**Title: Cattle for beef production on NI farms October 2021**

Source: Livestock and Meat Commission/APHIS data  
 Date: 02 November 2021  
 Contact: bulletin@lmcni.com  
 Website: www.lmcni.com



**Total cattle for beef production**

Age (months)	2019	2020	2021	2020/2021	2019/2021
0-6	134,636	136,328	187,048	+37.2%	+38.9%
6-12	227,573	238,528	219,128	-8.1%	-3.7%
12-18	140,253	150,774	177,579	+17.8%	+26.6%
18-24	184,624	190,739	173,531	-9.0%	-6.0%
24-30	89,265	83,231	96,566	+16.0%	+8.2%
30 +	297,467	296,618	287,369	-3.1%	-3.4%

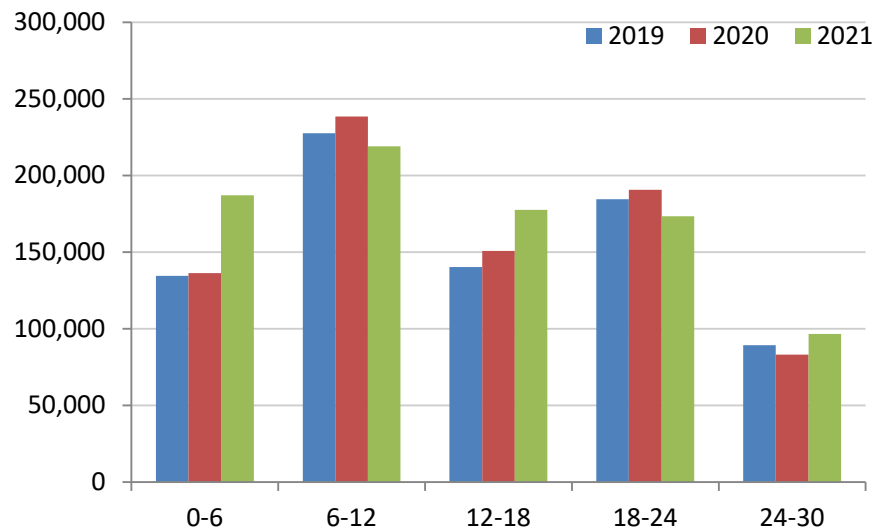
**Beef sired male cattle for beef production**

Age (months)	2019	2020	2021	2020/2021	2019/2021
0-6	60,538	60,639	86,579	+42.8%	+43.0%
6-12	104,892	109,396	97,860	-10.5%	-6.7%
12-18	61,886	66,999	78,885	+17.7%	+27.5%
18-24	78,861	82,360	71,972	-12.6%	-8.7%
24-30	31,879	27,856	31,281	+12.3%	-1.9%
30 +	18,323	17,471	14,776	-15.4%	-19.4%

**Beef sired female cattle for beef production**

Age (months)	2019	2020	2021	2020/2021	2019/2021
0-6	57,332	58,435	83,118	+42.2%	+45.0%
6-12	102,041	107,228	95,715	-10.7%	-6.2%
12-18	63,550	67,481	82,937	+22.9%	+30.5%
18-24	95,536	96,440	87,581	-9.2%	-8.3%
24-30	50,579	48,604	59,429	+22.3%	+17.5%
30 +	276,379	276,650	270,263	-2.3%	-2.2%

**Total cattle for beef production**



**Dairy sired male cattle for beef production**

Age (months)	2019	2020	2021	2020/2021	2019/2021
0-6	16,766	17,254	17,351	+0.6%	+3.5%
6-12	20,640	21,904	25,553	+16.7%	+23.8%
12-18	14,817	16,294	15,757	-3.3%	+6.3%
18-24	10,227	11,939	13,978	+17.1%	+36.7%
24-30	6,807	6,771	5,856	-13.5%	-14.0%
30+	2,765	2,497	2,330	-6.7%	-15.7%

LMC does not guarantee the accuracy or completeness of any third party information provided in or included with this publication.

LMC hereby disclaims any responsibility for error, omission or inaccuracy in the information, misinterpretation or any other loss, disappointment, negligence or damage caused by reliance on third party information.

